

GENERAL NOTES (Continued)

Payment for sandbed and Class A Concrete under the bricks, shall be subsidiary to the bid item "Paving Bricks:".

Payment for the 25 mm  $\phi$  weep hole with filter fabric shall be subsidiary to the bid item "Paving Bricks:".

Payment for 13 mm Expansion Joint Material shall be subsidiary to the bid item "Median Curb:".

GENERAL NOTES

| F.H.W.A. REGION NO. | STATE  | PROJECT NO.     | YEAR | SHEET NO. | TOTAL SHEETS |
|---------------------|--------|-----------------|------|-----------|--------------|
| 7                   | KANSAS | 54-87 K-8258-04 | 2004 | 14        | 60           |

Combined curb and gutter or gutter adjoining concrete pavement may, at the contractor's option, be poured either monolithically or separately, using either the mix used in the concrete pavement or Class "A" Concrete (AE). The combined curb and gutter or gutter shall have the same section as shown on the plans. If poured monolithically, dowel bars may be omitted from the combined curb and gutter or gutter, but the wire mesh shall be extended to 150 mm or less from the back of the curb or gutter. Pavement joints shall be continued through curb or gutter and no other planes of weakness will be required. Joints in the combined curb and gutter or gutter are to be filled with the same material as used for the pavement joints.

Expansion joints in the combined curb and gutter are to be placed opposite expansion joints in the pavement.

Where combined curb and gutter or gutter does not abut concrete pavement or concrete base course, omit tie bars and longitudinal construction joint and place a 25 mm pre-moulded Expansion Joint Filler (Nonextruding, Type B) cut to the dimensions of the combined curb and gutter or gutter, at a spacing not to exceed 75 m and at the ends of curb returns.

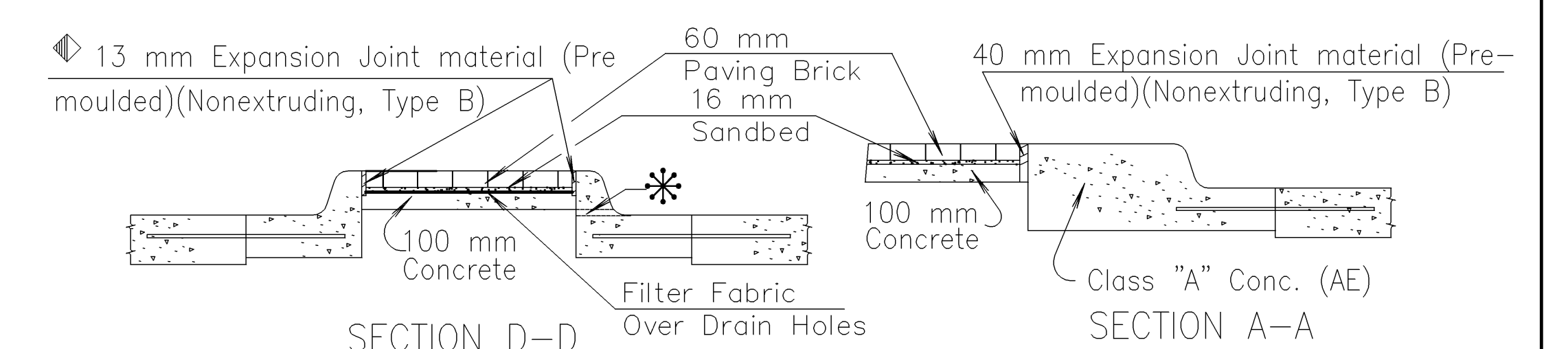
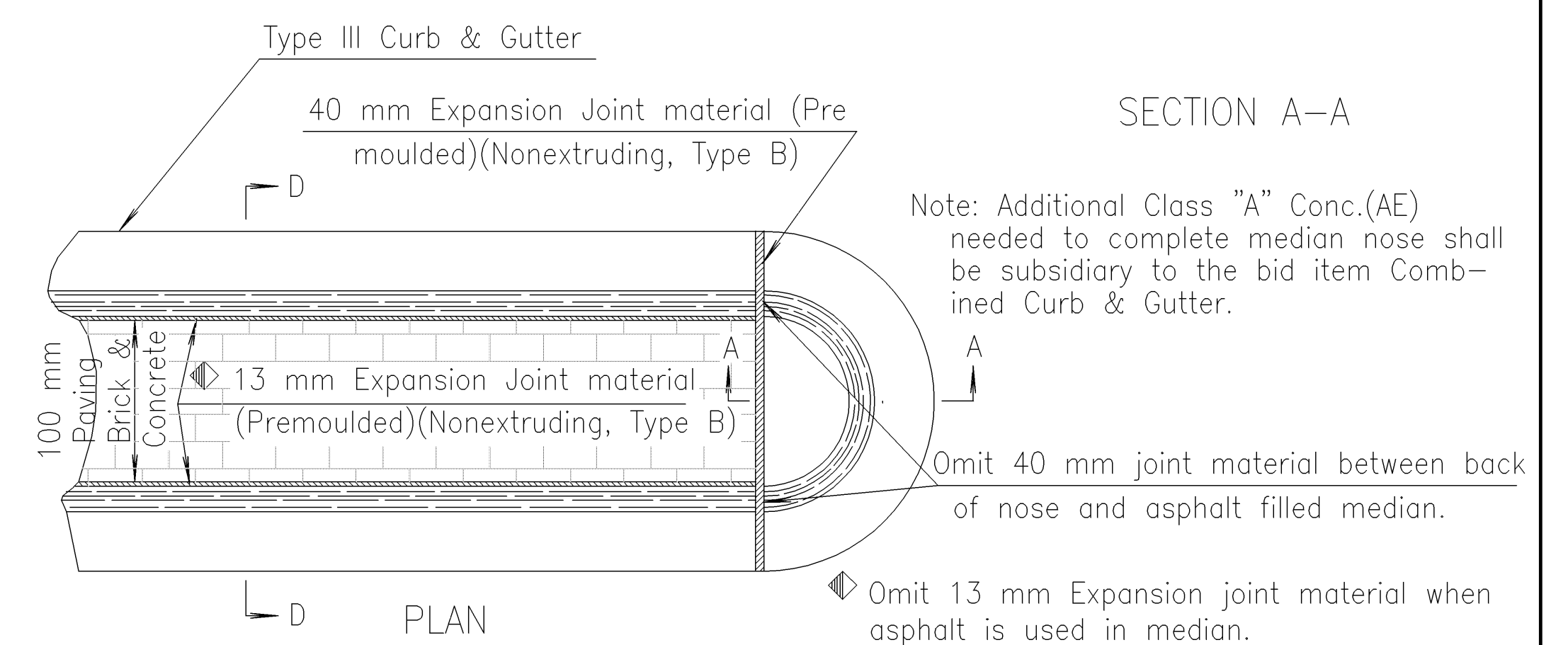
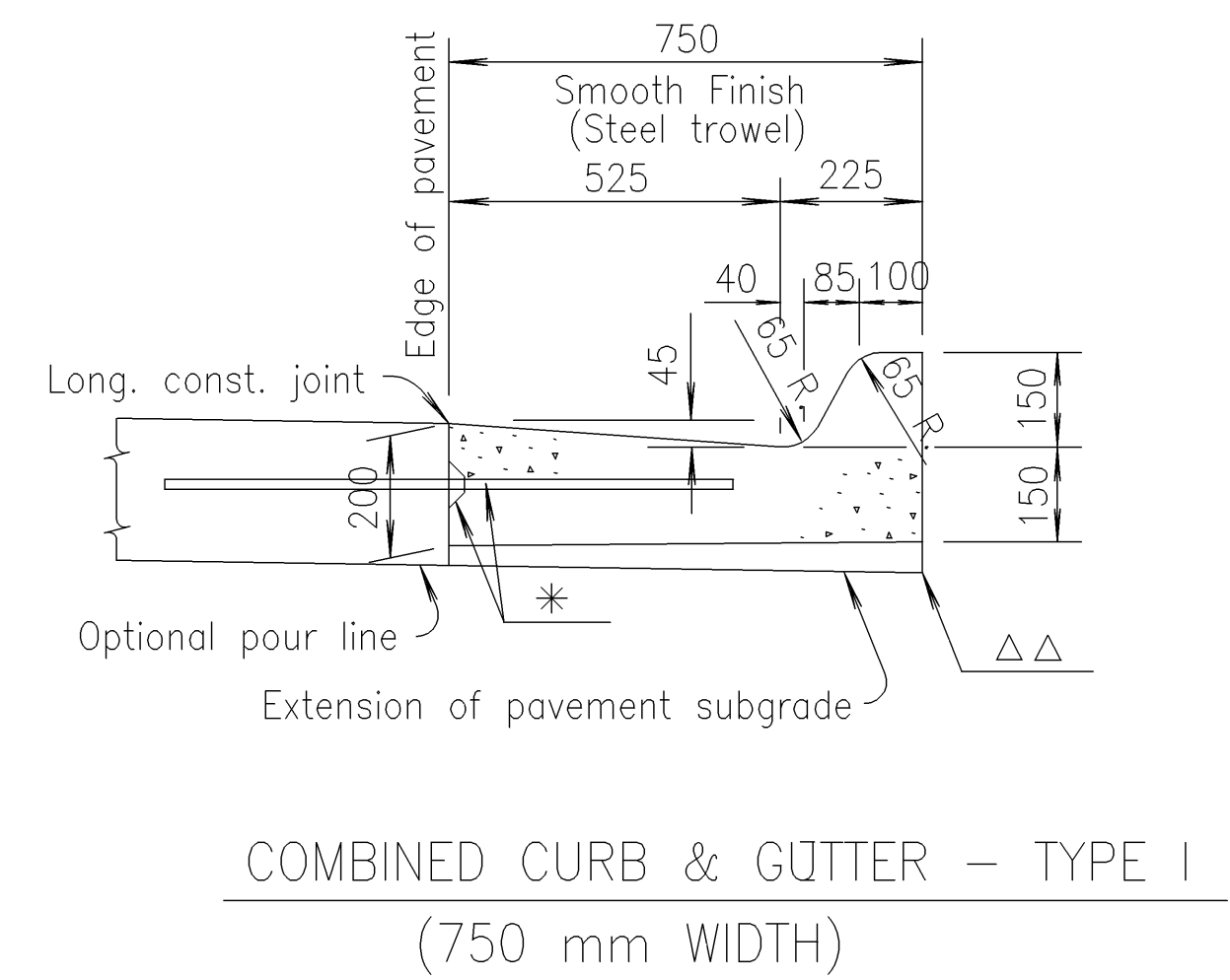
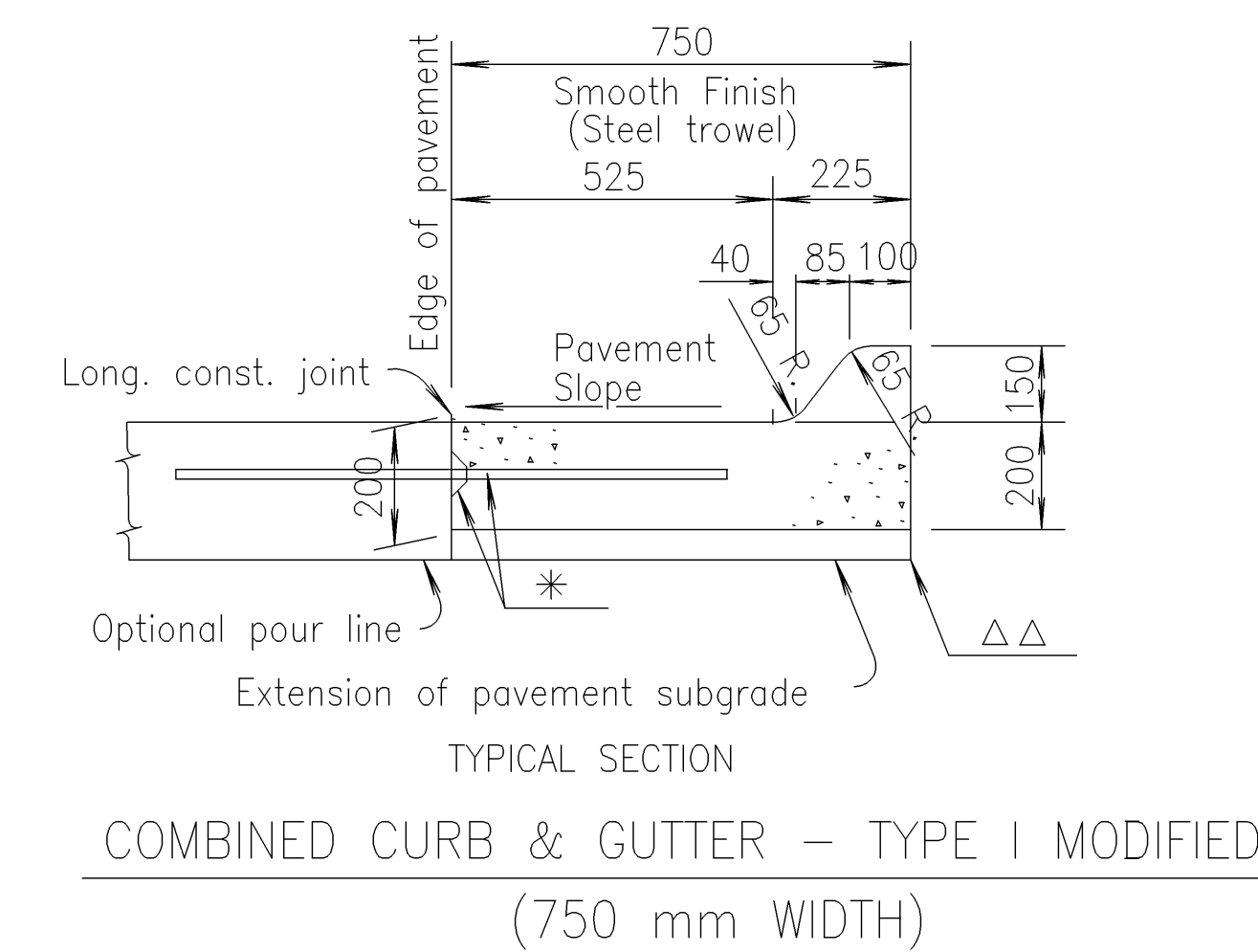
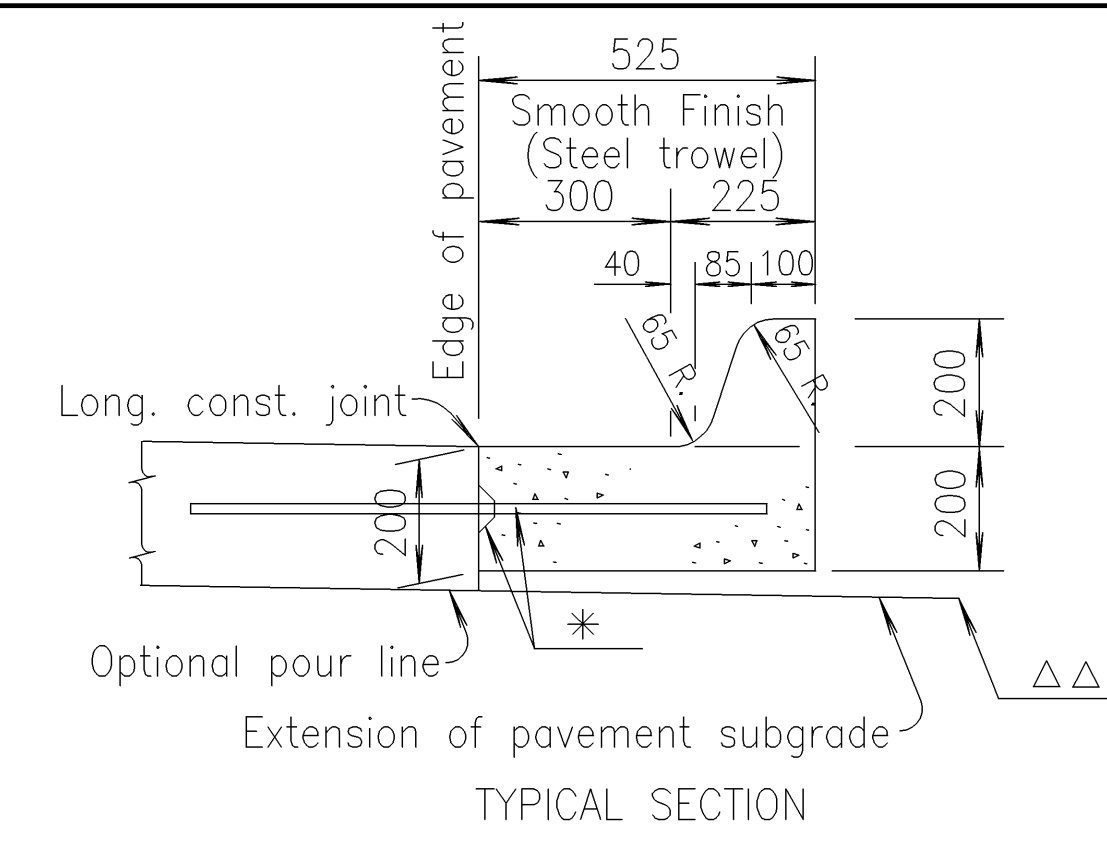
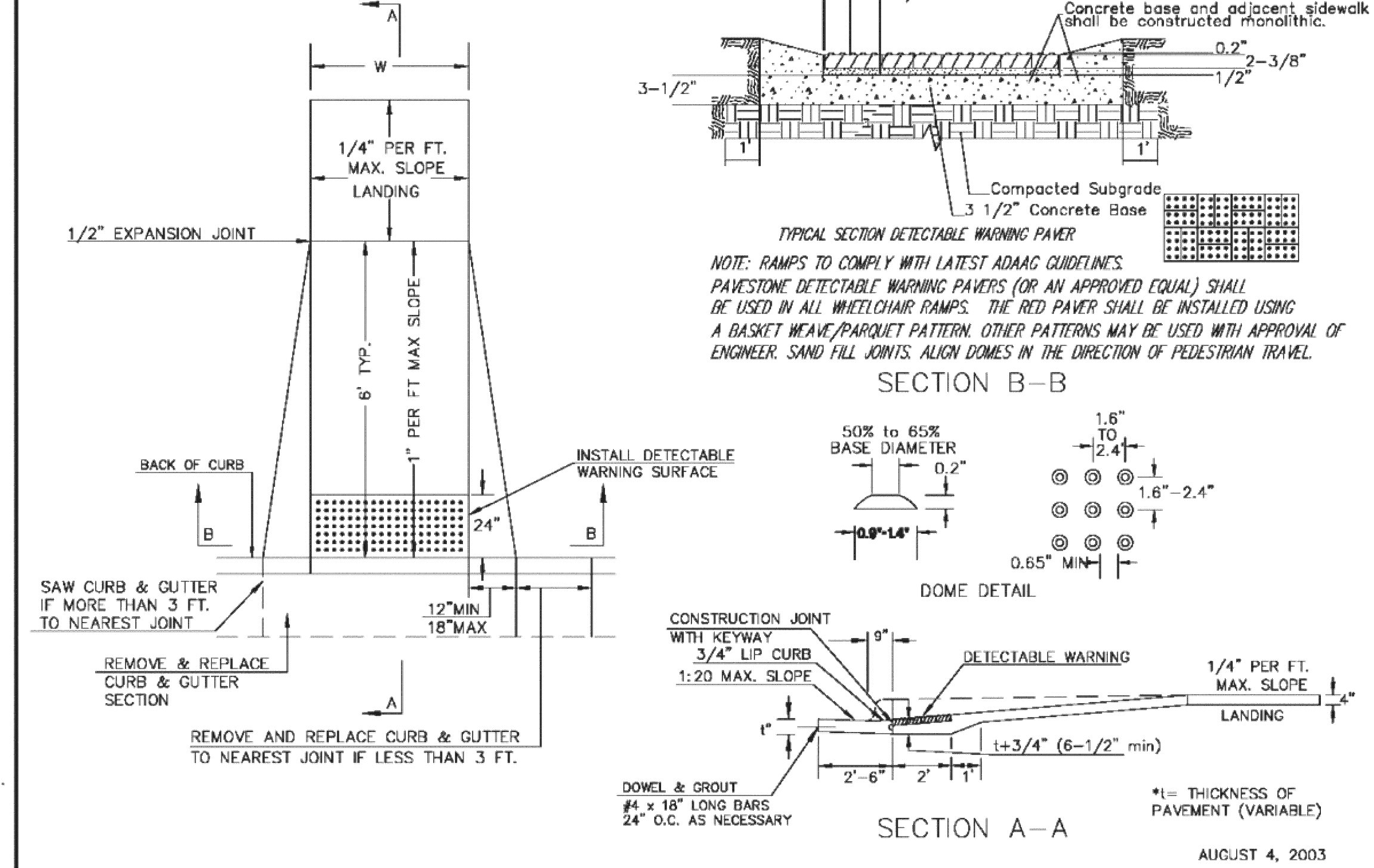
Where combined curb and gutter or gutter is adjacent to bituminous construction, planes of weakness shall be constructed at 6 m intervals.

Longitudinal joints shall be sawed and sealed with joint sealant. See special provisions.

\*Optional Longitudinal keyed construction joint and #16 x 900 mm bars @ 750 ctrs., where concrete pavement is constructed.  
 $\Delta\Delta$  Contractor has the option of thickening the curb and gutter as shown.

(TYPE A)  
STANDARD WHEELCHAIR RAMP  
WITH DETECTABLE WARNING  
CONSTRUCTION DETAIL FOR STREETS  
WITH COMBINED CURB & GUTTER

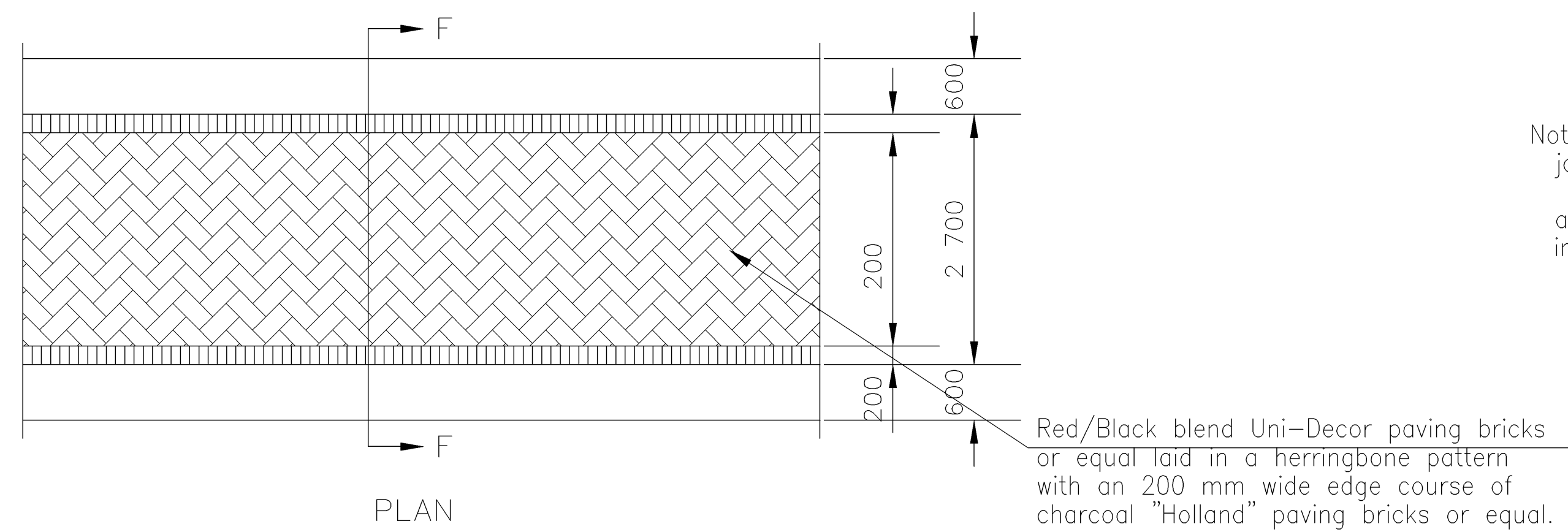
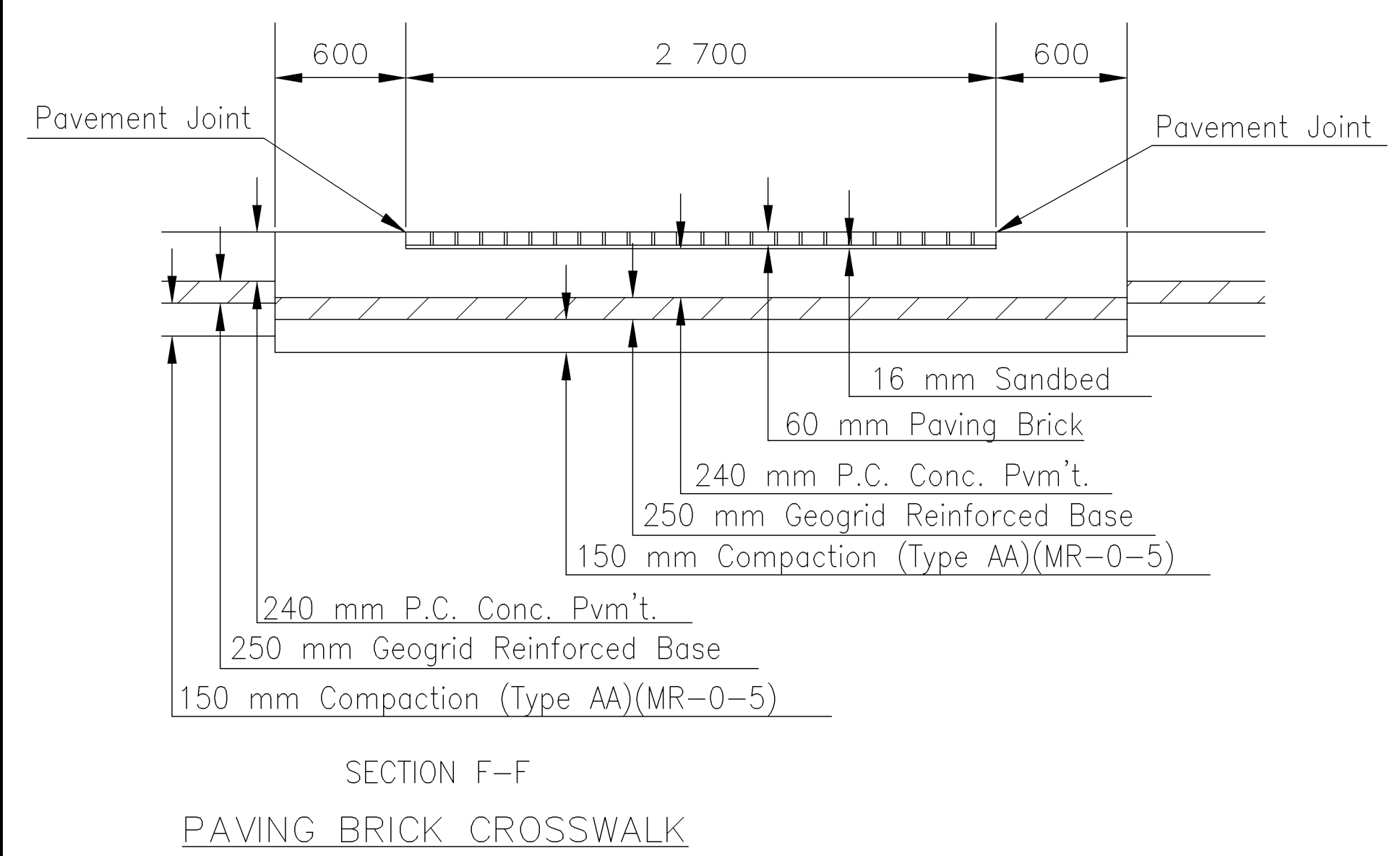
W= 4'0" FOR STANDARD RAMP  
W= 5'0" FOR RAMPS AT SCHOOL CROSSWALKS  
(OR TO MATCH EXISTING)



\*25 mm  $\phi$  PVC Pipe with filter fabric on 4.6 m ctrs from low point (on low side). (Align with contraction joint)

Note: Expansion joints shall be placed in concrete median as follows. In long runs expansion joints shall be 13 mm expansion joint material (Nonextruding, Type B) flush with the surface. Expansion joints in the median shall match expansion joints in the curb and gutter with a maximum spacing of 38 m. Plane of weakness in median shall match plane of weakness in curb & gutter.

TYPICAL NOSE DETAILS FOR RAISED MEDIANS



KANSAS DEPARTMENT OF TRANSPORTATION  
**CONCRETE CURB & GUTTER**  
 RD-740-SI  
 City Of Wichita  
 Sedgwick Co.

DATE  
 BY  
 REFERENCE NOTED  
 REFERENCE CHECKED  
 Drawn by: SCALE  
 File: