

DATE	
BY	
REFERENCE NOTED	
REFERENCE CHECKED	



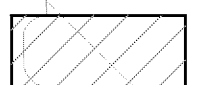
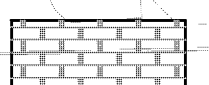
CONSTRUCTION SEQUENCE NORTH ARMOUR ROAD

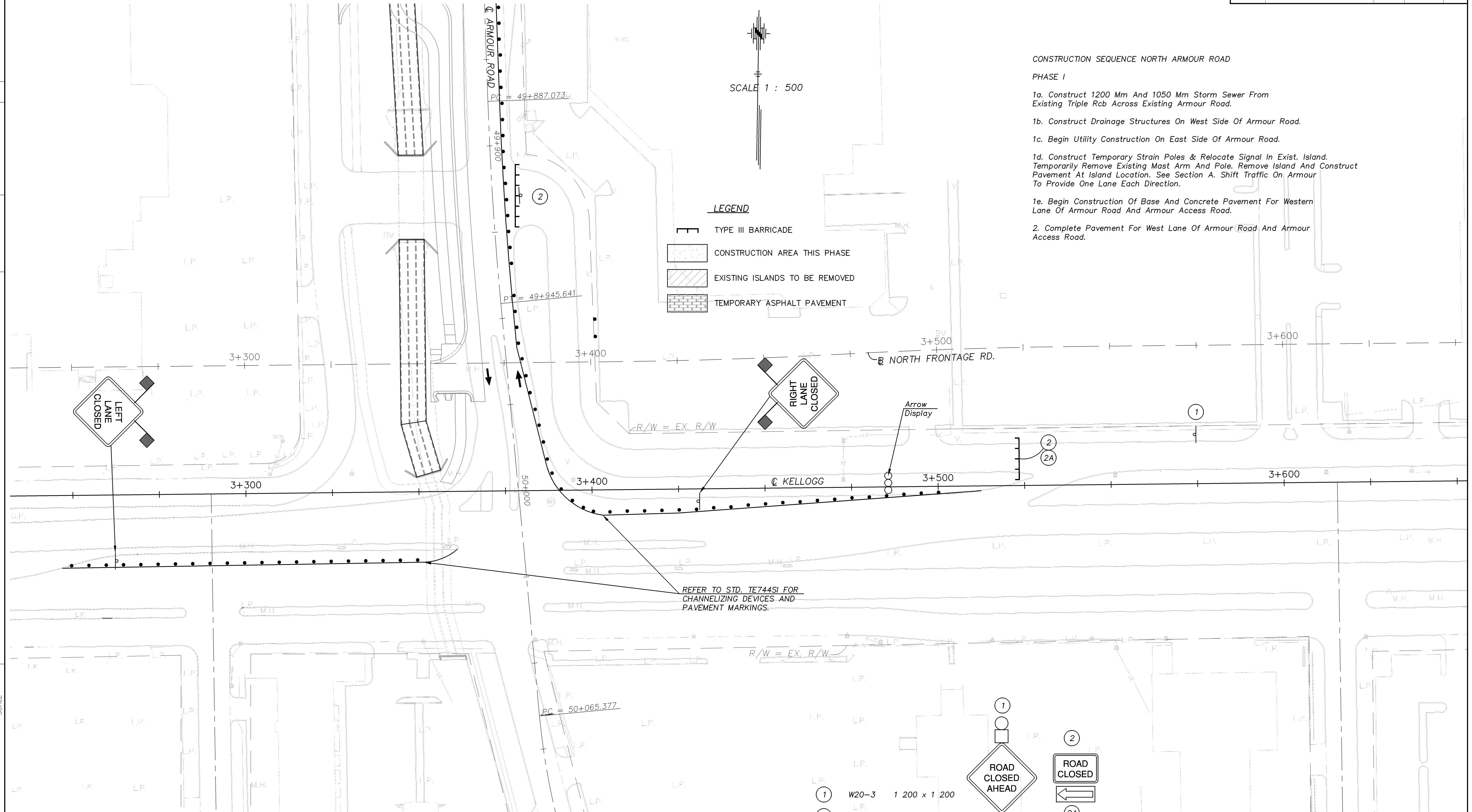
PHASE I

- 1a. Construct 1200 Mm And 1050 Mm Storm Sewer From Existing Triple Rcb Across Existing Armour Road.
- 1b. Construct Drainage Structures On West Side Of Armour Road.
- 1c. Begin Utility Construction On East Side Of Armour Road.
- 1d. Construct Temporary Strain Poles & Relocate Signal In Exist. Island. Temporarily Remove Existing Mast Arm And Pole. Remove Island And Construct Pavement At Island Location. See Section A. Shift Traffic On Armour To Provide One Lane Each Direction.
- 1e. Begin Construction Of Base And Concrete Pavement For Western Lane Of Armour Road And Armour Access Road.
2. Complete Pavement For West Lane Of Armour Road And Armour Access Road.

SCALE 1 : 500

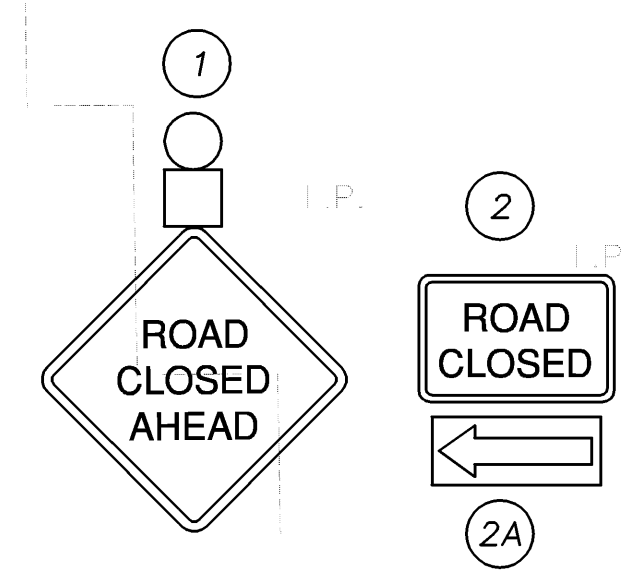
LEGEND

-  TYPE III BARRICADE
-  CONSTRUCTION AREA THIS PHASE
-  EXISTING ISLANDS TO BE REMOVED
-  TEMPORARY ASPHALT PAVEMENT



REFER TO STD. T744SI FOR CHANNELIZING DEVICES AND PAVEMENT MARKINGS.


1	W20-3	1 200 x 1 200
2	R11-2	1 200 x 750 #
2A	W1-6	1 200 x 600



To Be Used With Type III Barricades

KANSAS DEPARTMENT OF TRANSPORTATION

TRAFFIC CONTROL PLAN
NORTH ARMOUR ROAD
PHASE I

Drawn by:  Cook, Flatt & Strobel
ENGINEERS, P.A.