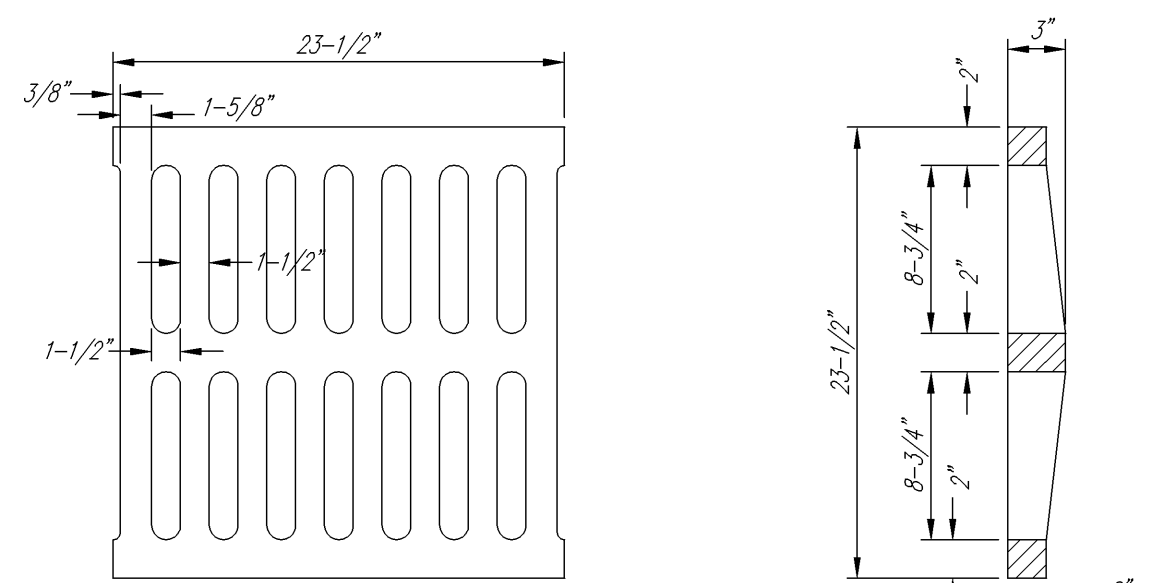
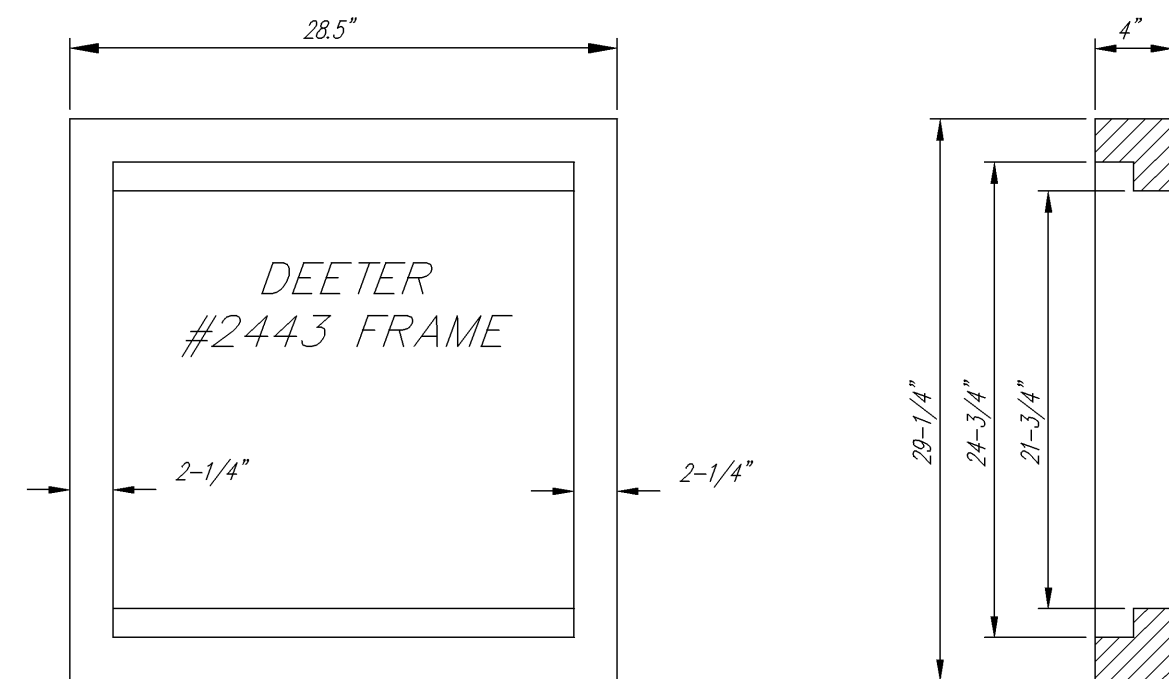


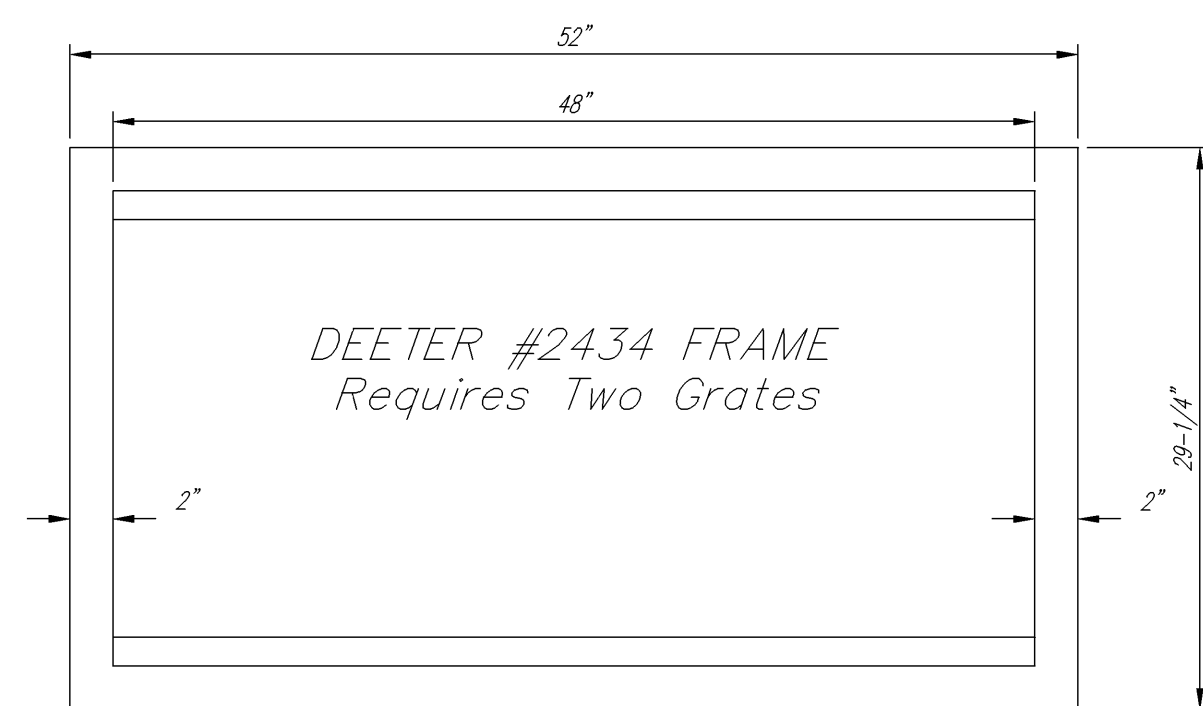
STATE	PROJECT NO.	FISCAL YEAR	SHEET NO.	TOTAL SHEETS
KANSAS	87 N-0306-01	2005	22	111



DEETER #2433 GRATE

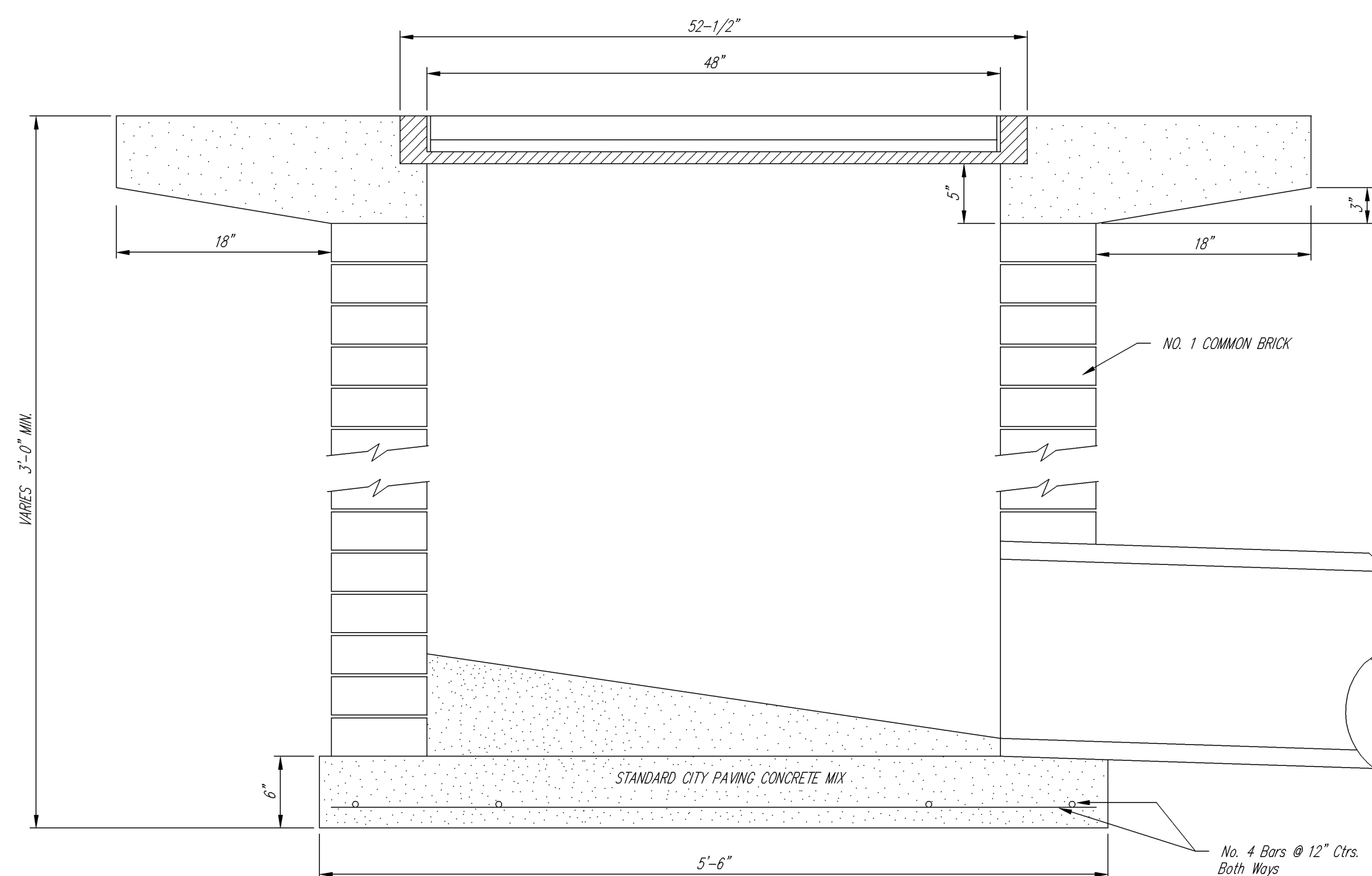
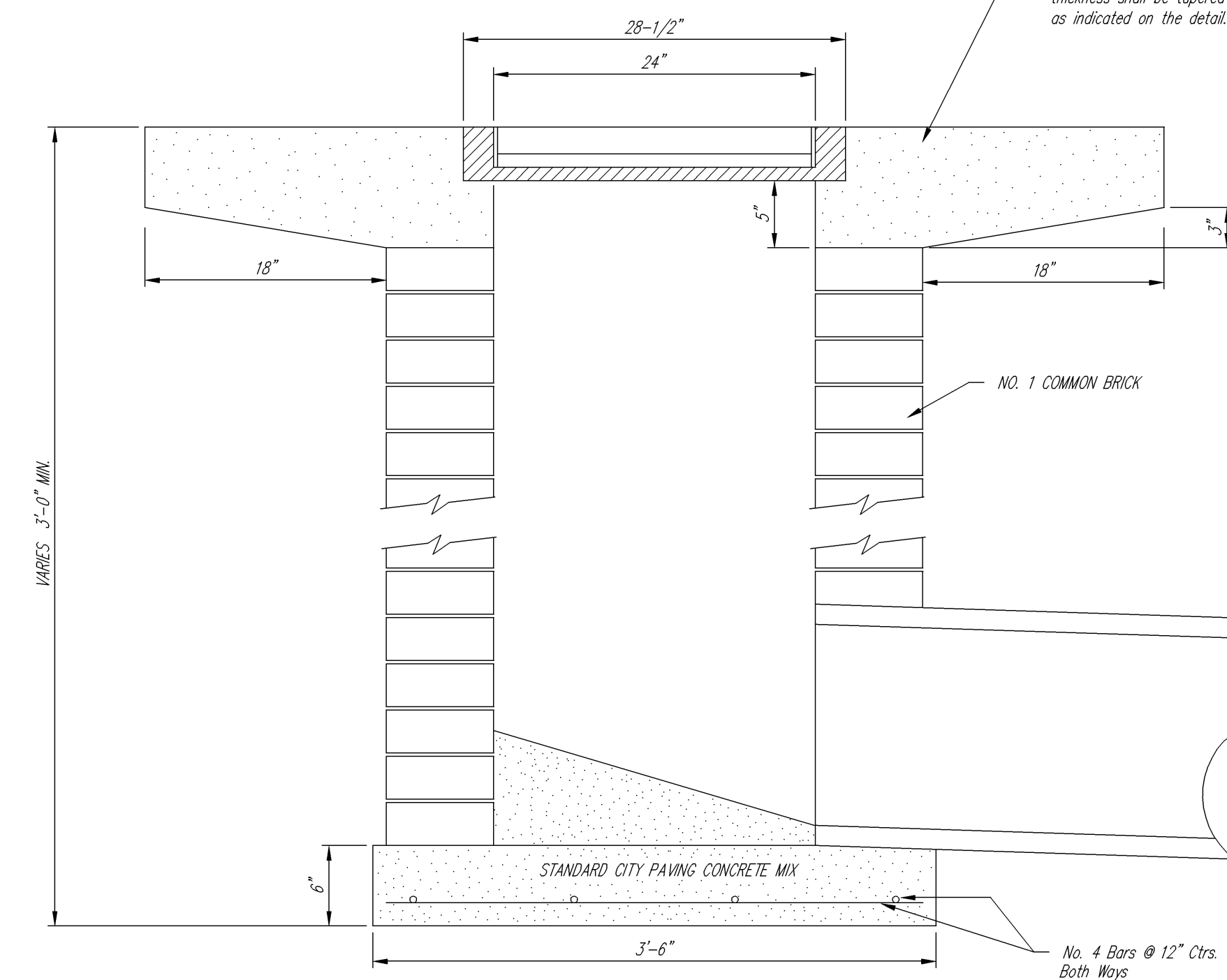
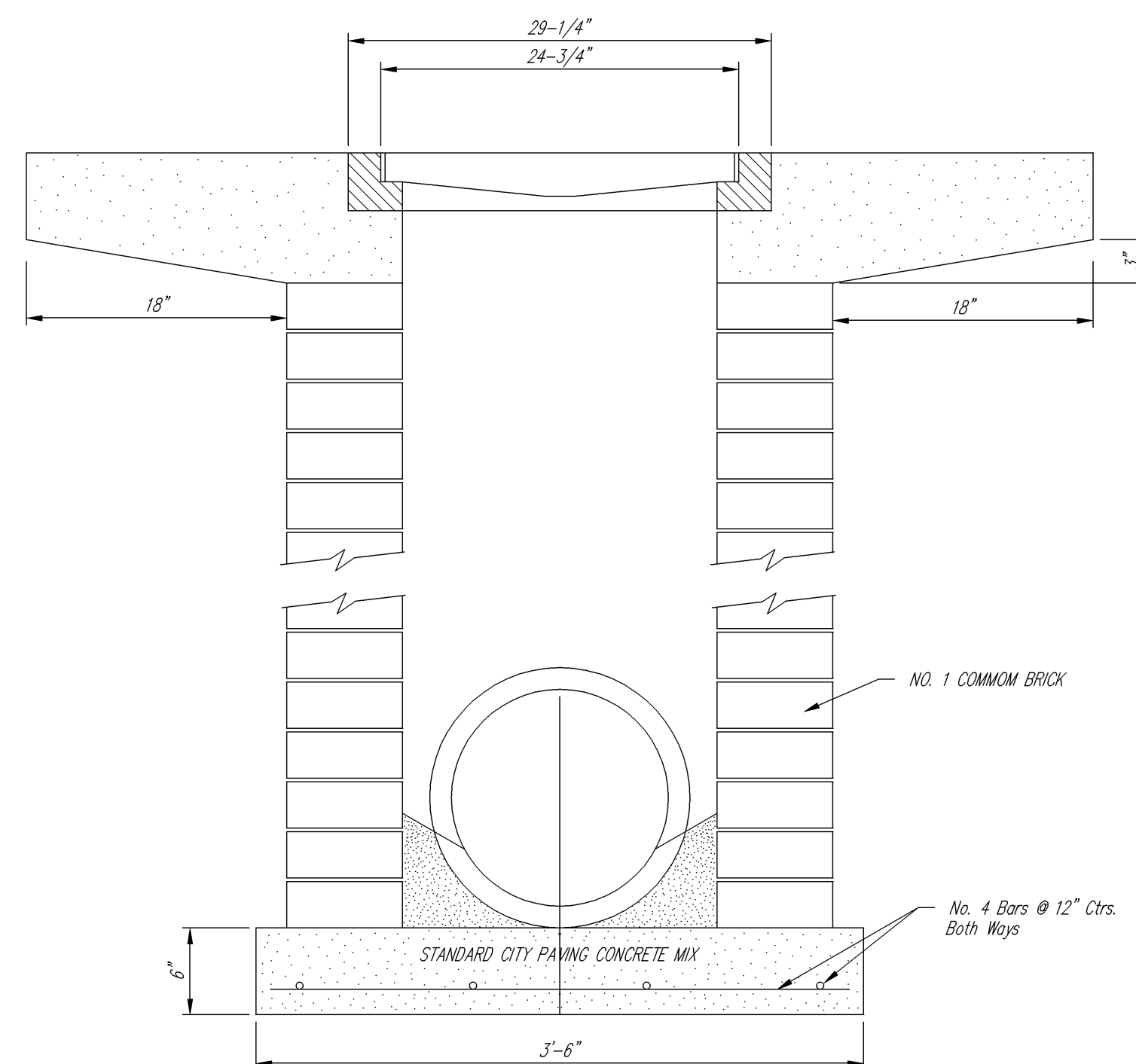
24" x 24" Frame and Grate Detail

NOTE: Grates shall be imprinted on the top surface with "CITY OF WICHITA" using letters at least 1" in height. Other marking methods may be approved by the engineer.



DEETER #2434 FRAME  
Requires Two Grates

Double 24" x 24" Frame Detail



<p>THE CITY OF WICHITA</p> <p>CITY ENGINEER'S OFFICE 455 NORTH MAIN STREET WICHITA, KANSAS 67202 (316) 268-4501 (316) 268-4114 FAX</p>	<p><b>DROP INLET</b> 2' X 2'<sup>1</sup>/<sub>2</sub>' X 4'</p>		
	<p>M. E. LINDEBAK P.E. - CITY ENGINEER</p>		
	<p>PROJECT NUMBER 472-83903</p>	<p>INDEX CODE XXXXXX</p>	
	<p>DATE MAR 96</p>	<p>SHEET 22 OF 111</p>	