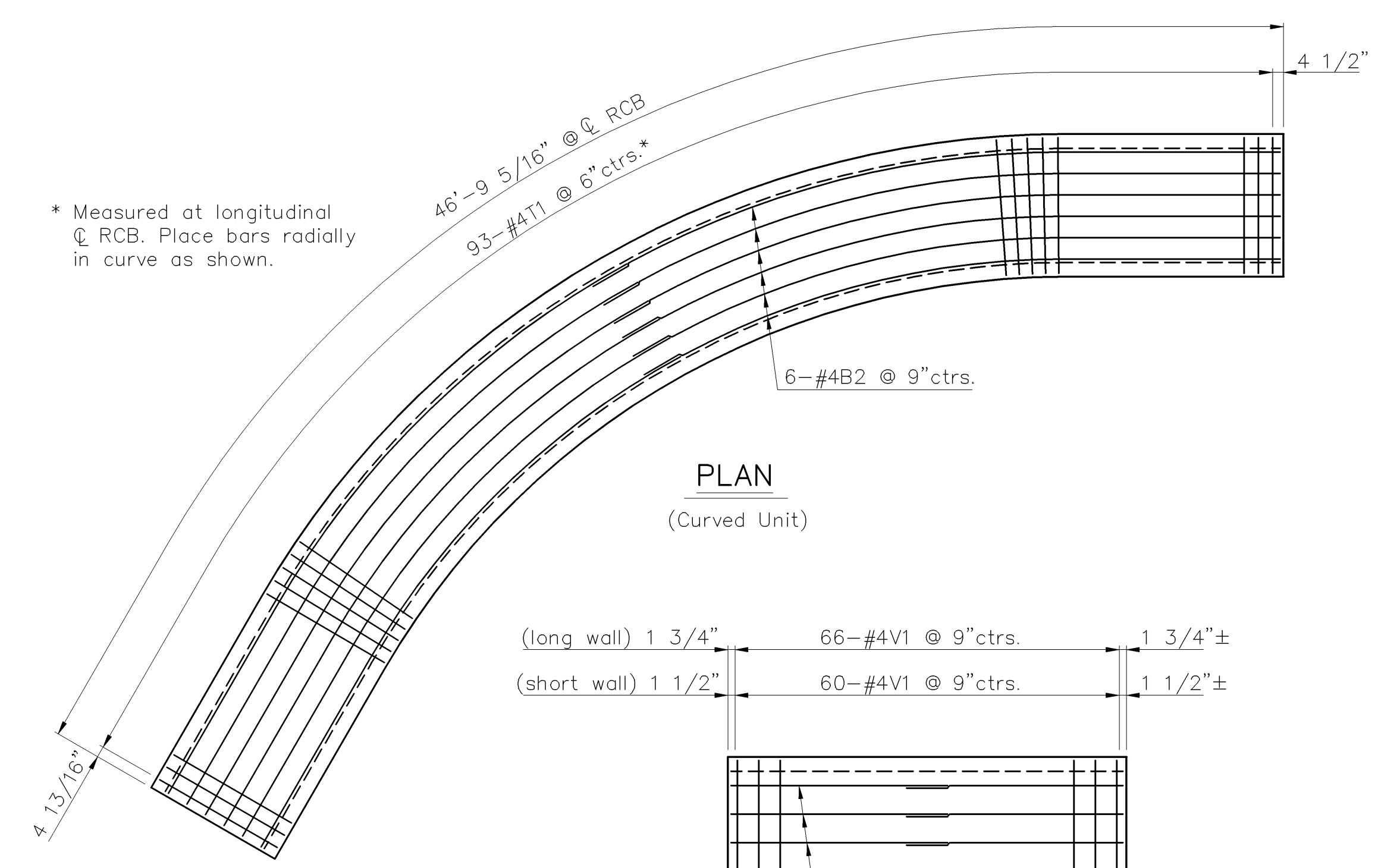
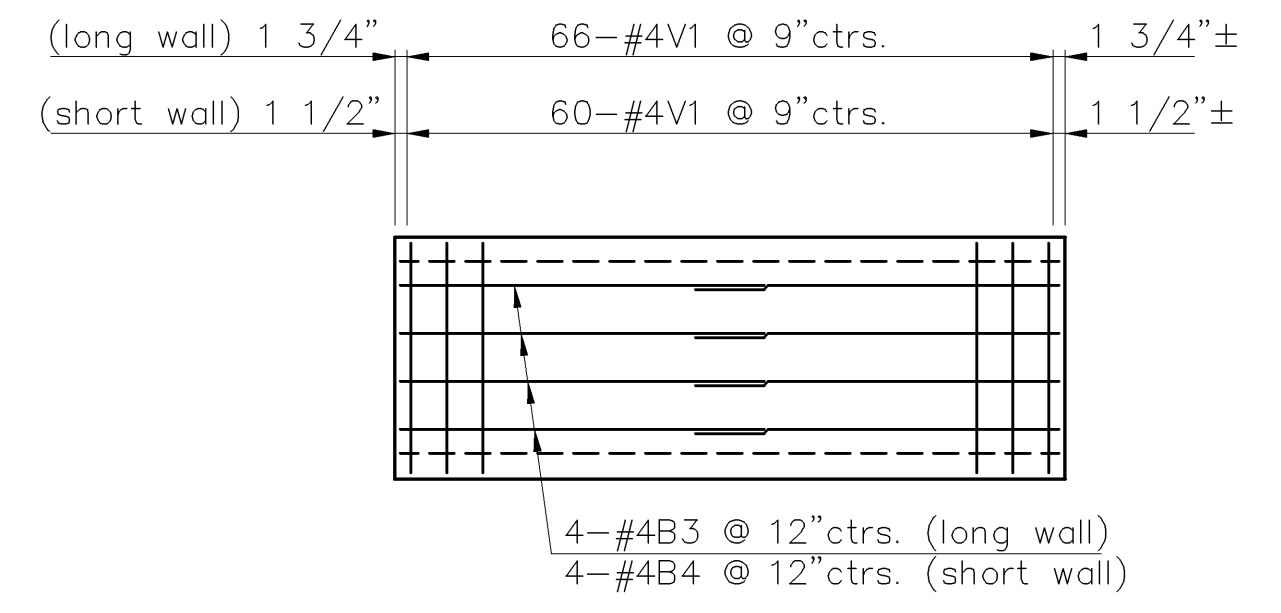


STATE	PROJECT NO.	YEAR	SHEET NO.	TOTAL SHEETS
KANSAS	87 N-0306-01	2005	28	111

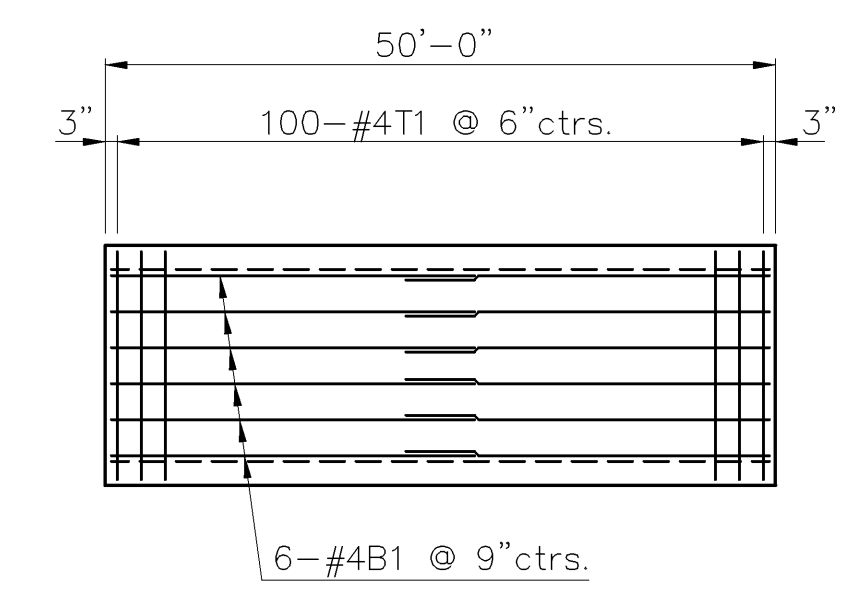
* Measured at longitudinal \perp RCB. Place bars radially in curve as shown.



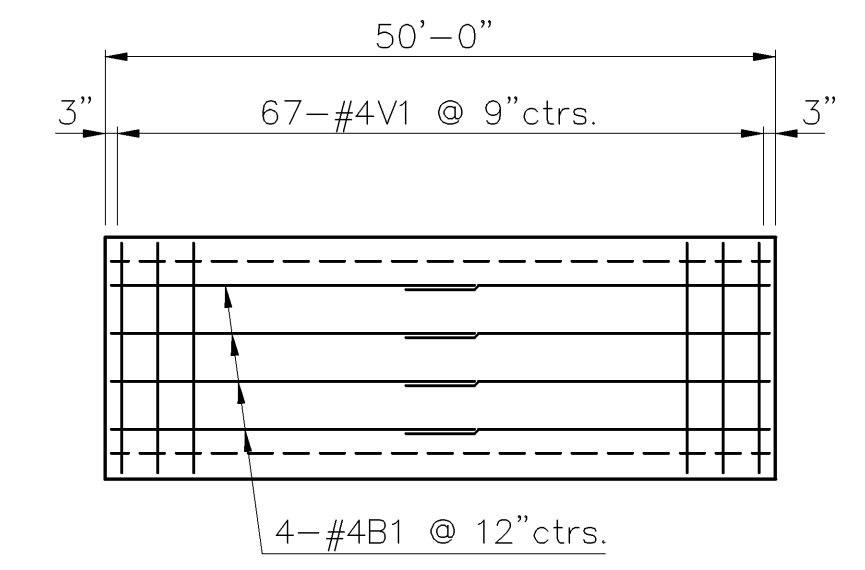
PLAN
(Curved Unit)



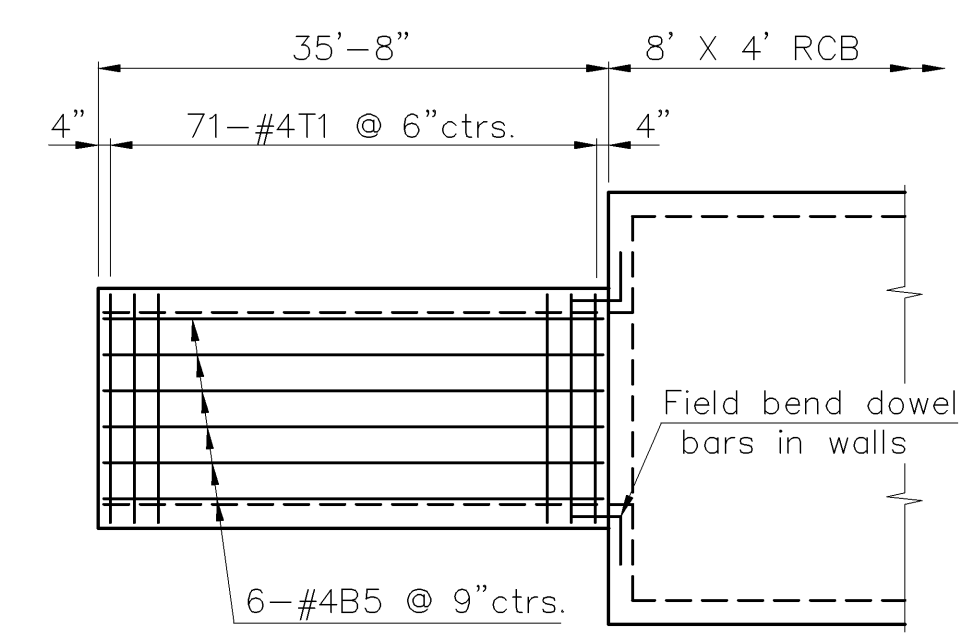
ELEVATION
(Curved Unit)



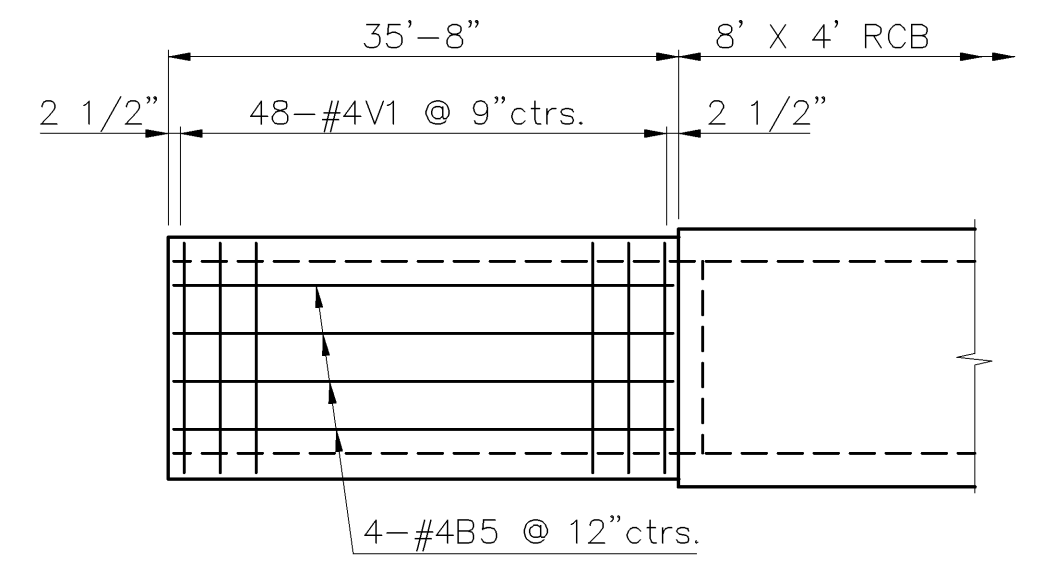
PLAN
(50.00' Unit)
(14 units thus)



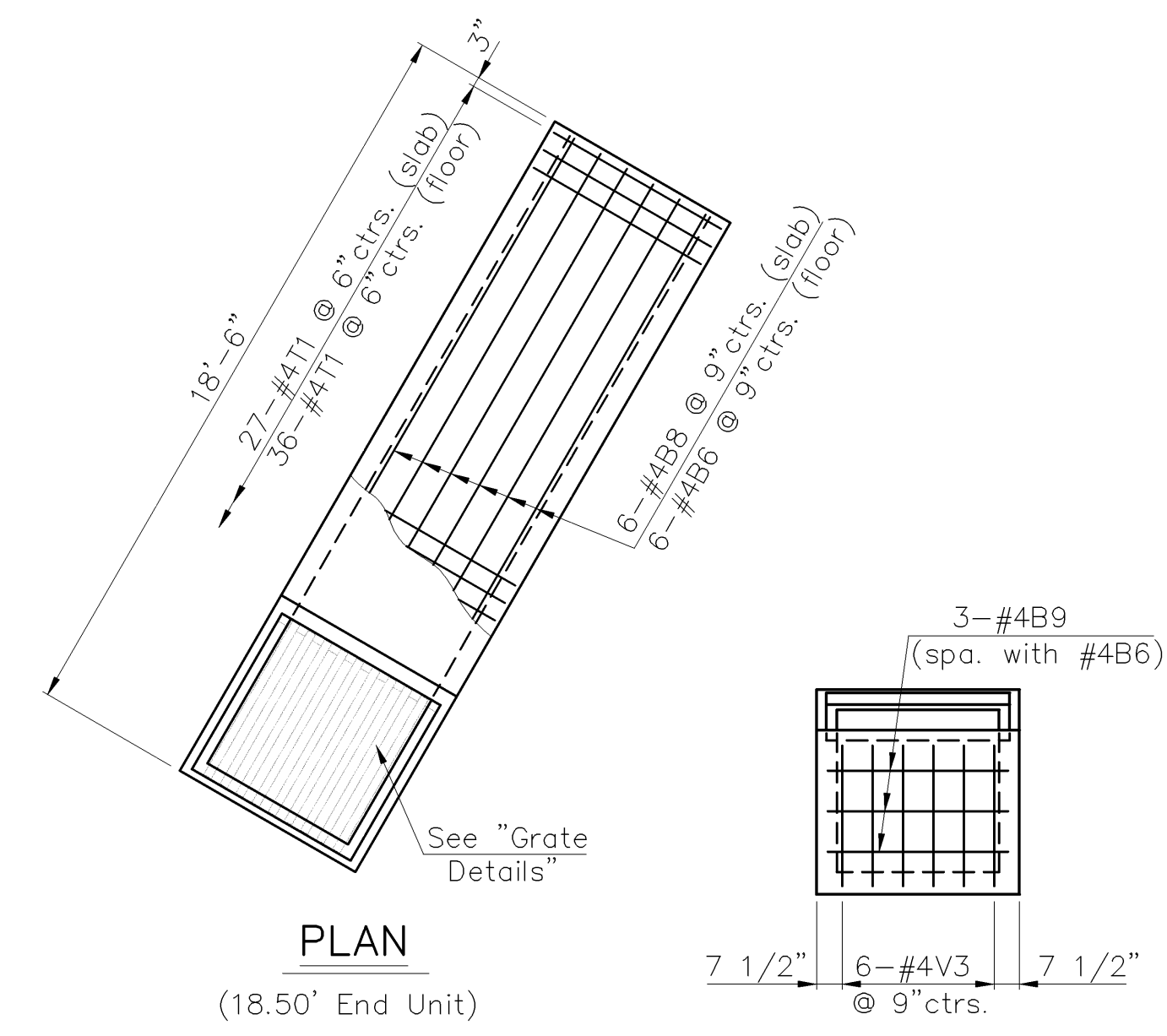
ELEVATION
(50.00' Unit)
(14 units thus)



PLAN
(35.66' Unit)

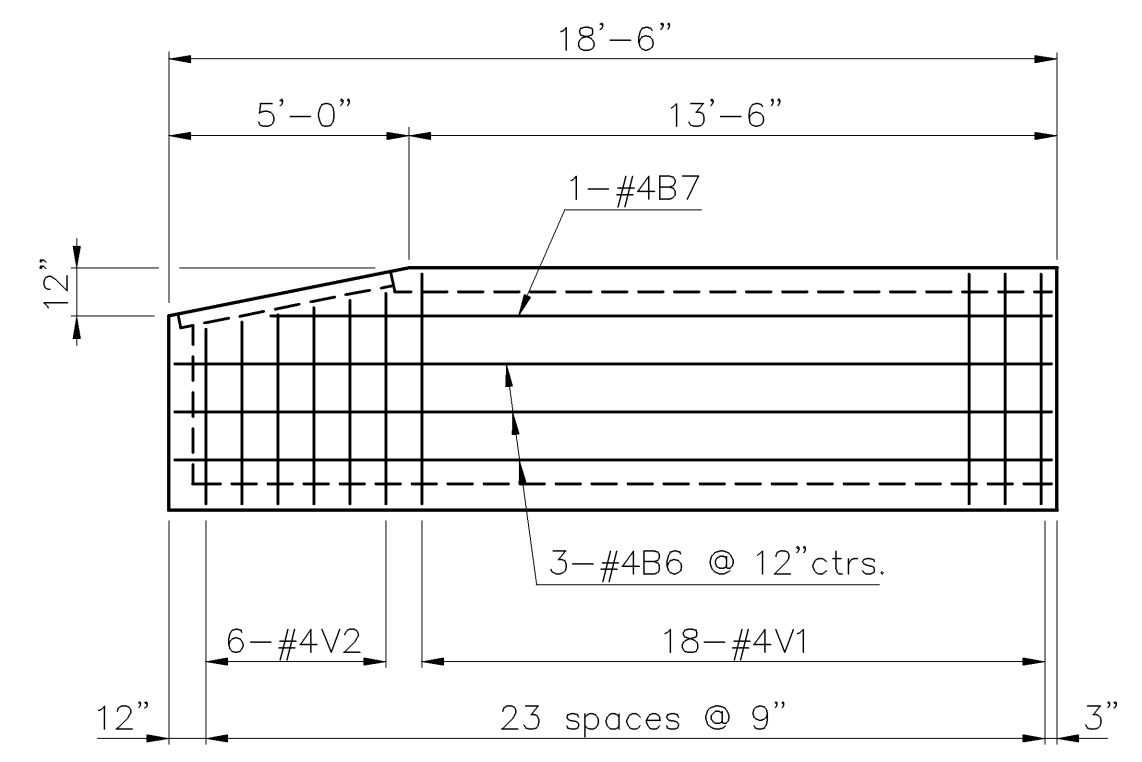


ELEVATION
(35.66' Unit)

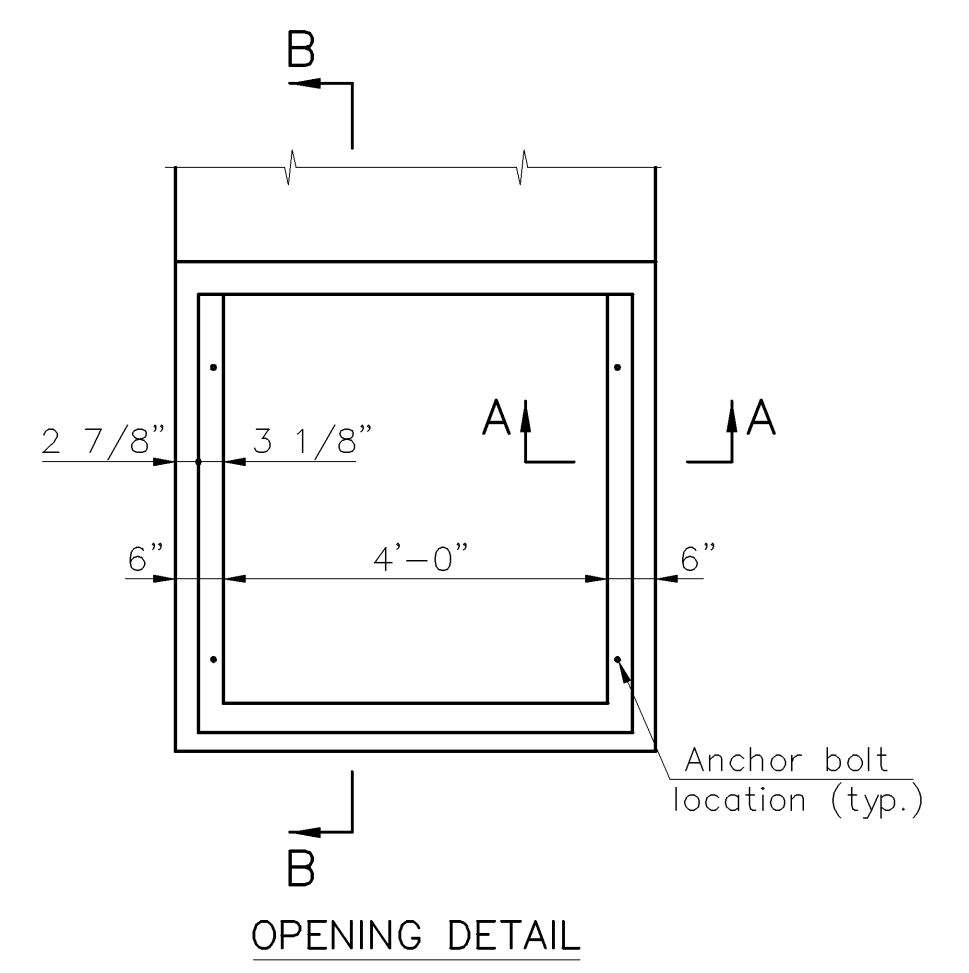


PLAN
(18.50' End Unit)

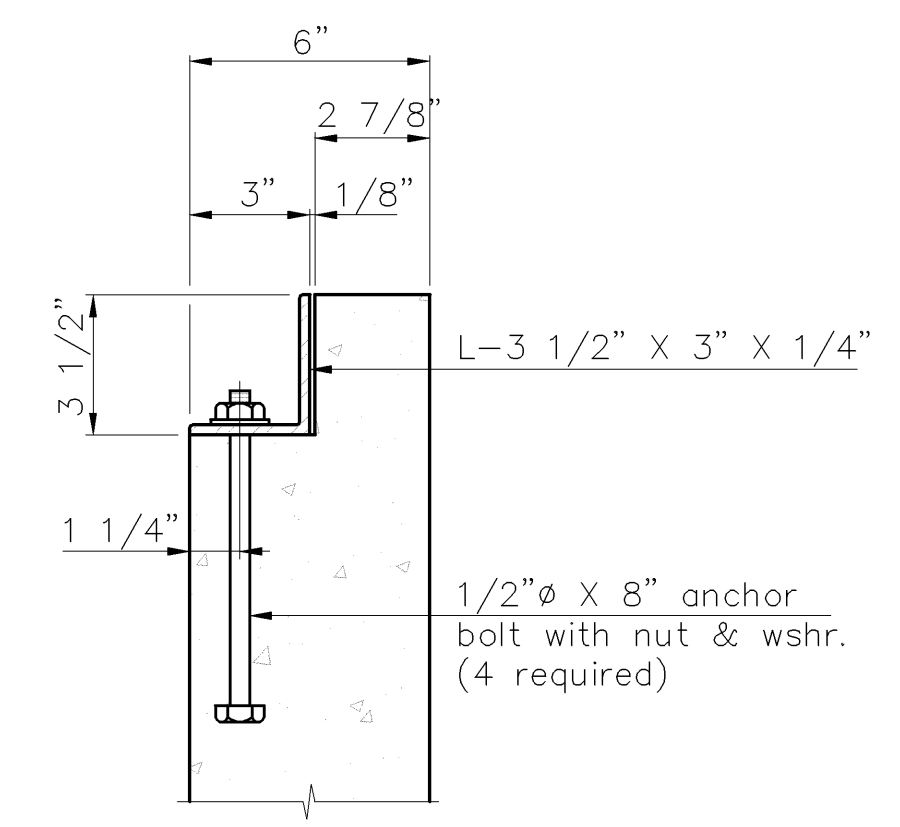
END ELEVATION
(18.50' End Unit)



ELEVATION
(18.50' End Unit)

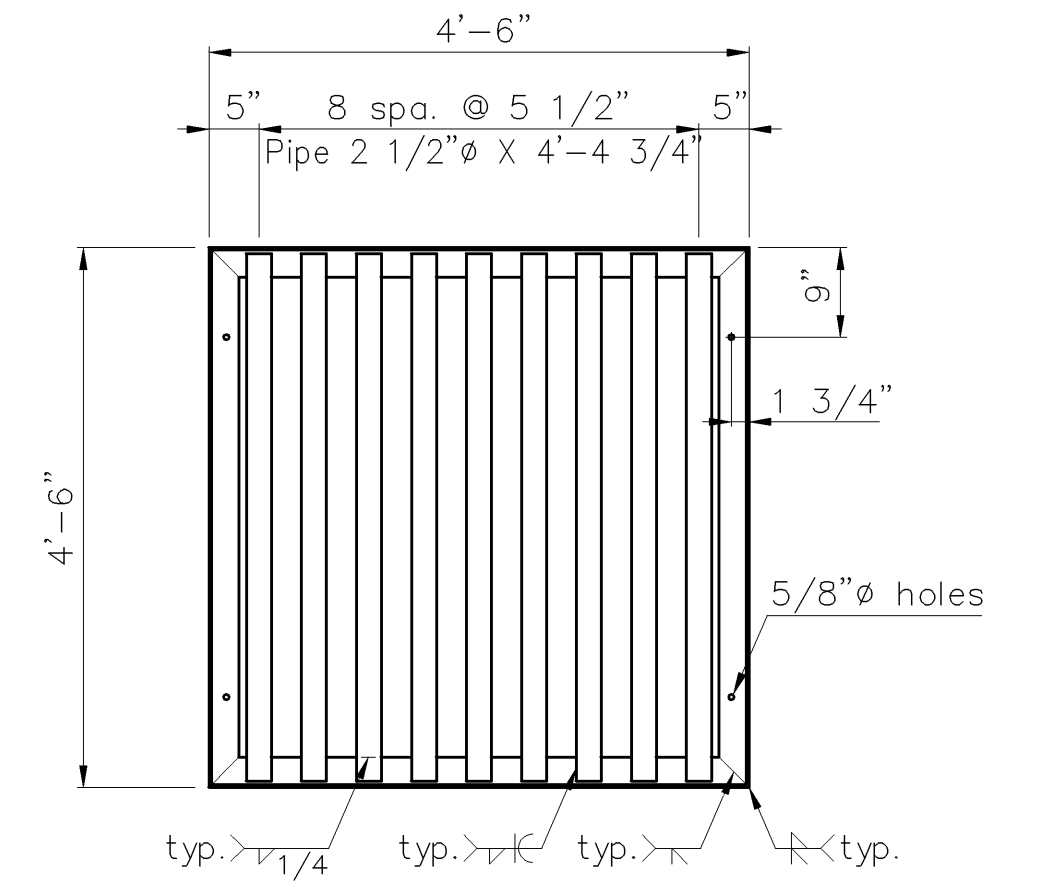


OPENING DETAIL

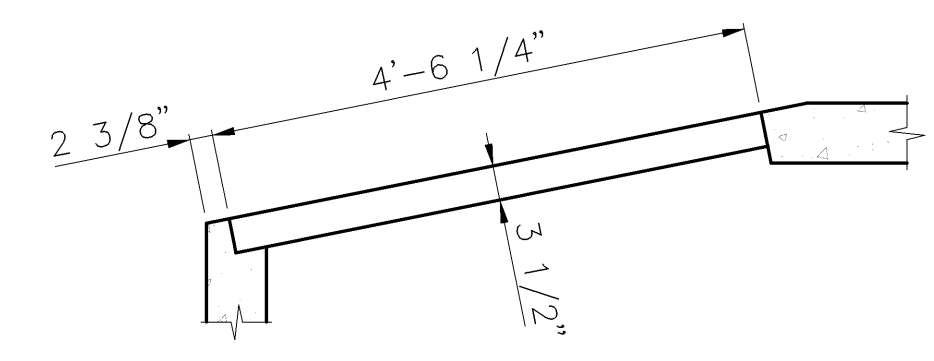


SECTION A-A

GRATE DETAILS



GRATE DETAIL



SECTION B-B

The grate shall be fabricated from standard or commercial grade structural steel and black steel pipe. The unit shall be hot dip galvanized after fabrication, in accordance with ASTM A123, except that the weight of coating shall average not less than 2.0 ounces per square foot of actual surface and no individual test shall show less than 1.8 ounces of coating per square foot of actual surface area.

PROJECT NO. 87 N-0306-01		CFS Cook, Flatt & Strobel ENGINEERS, P.A.
4' X 4' R.C.B.		
29TH STREET NORTH		DESIGNED RSC SCALE
STA. 111+62.50 to 119+45 CITY OF WICHITA		DETAILED DEG DATE 9/1/05
		QUANTITIES SHEET 28 OF 111