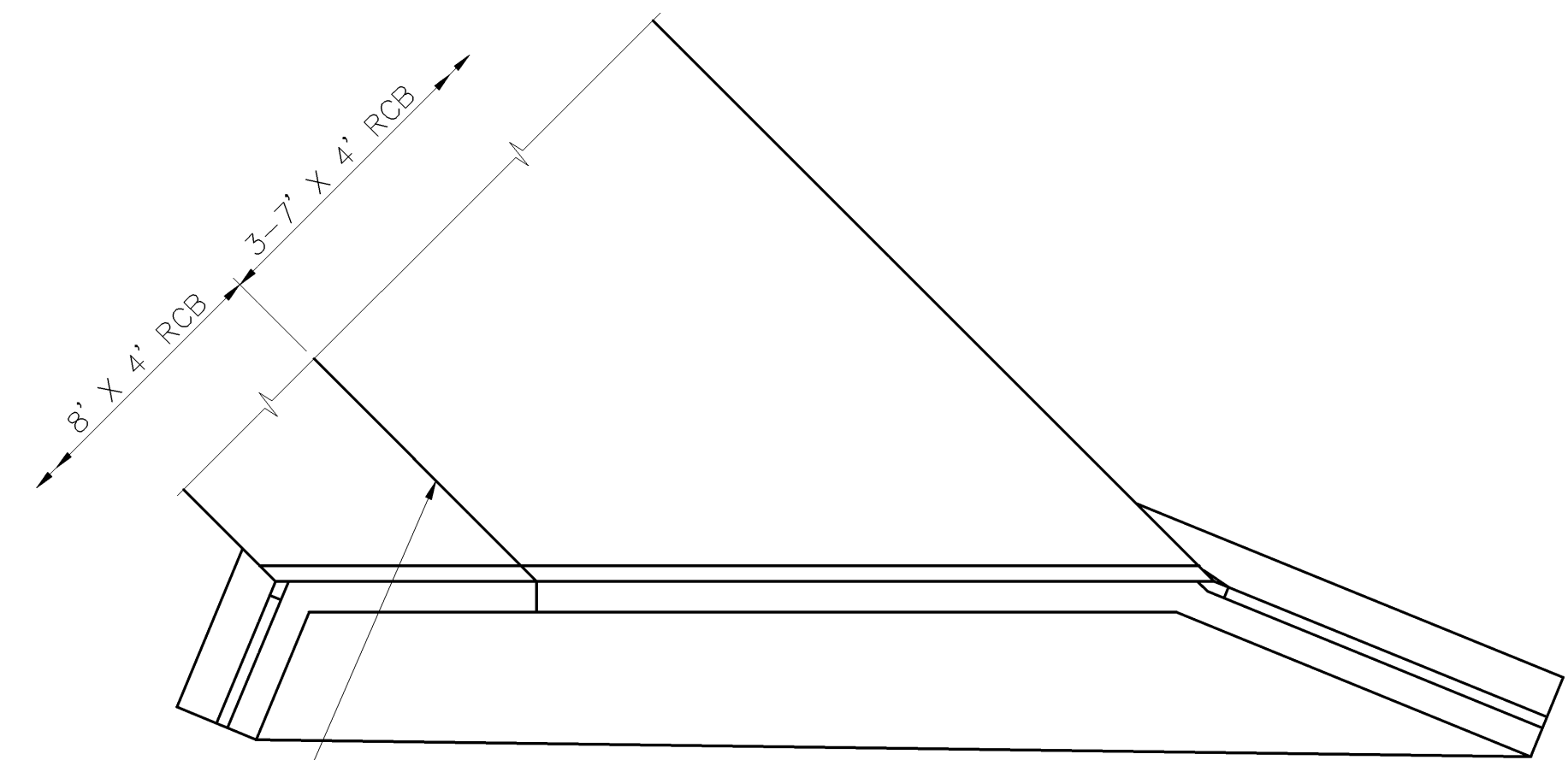
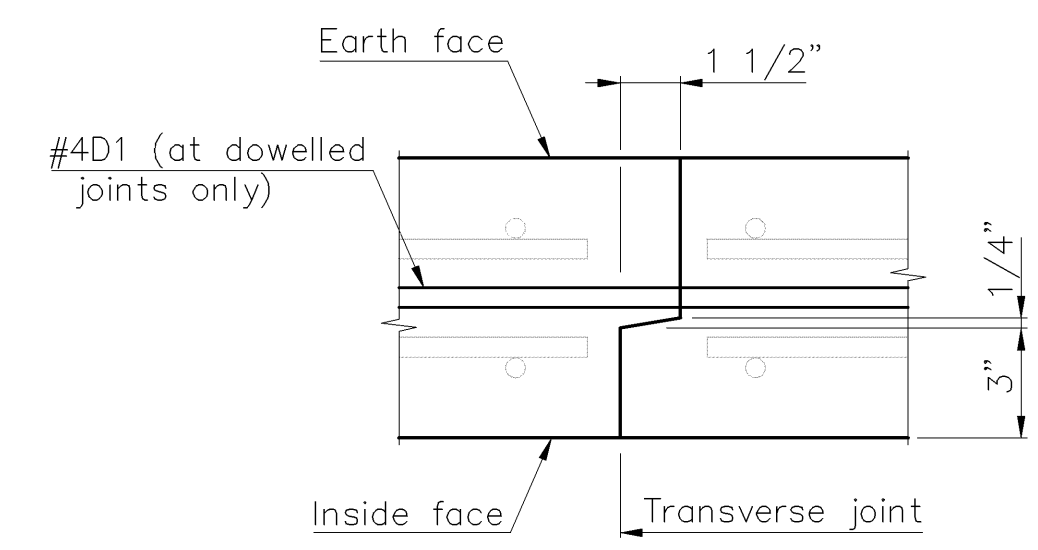


| | | | | |
|--------|--------------|------|-----------|--------------|
| STATE | PROJECT NO. | YEAR | SHEET NO. | TOTAL SHEETS |
| KANSAS | 87 N-0306-01 | 2005 | 37 | 111 |

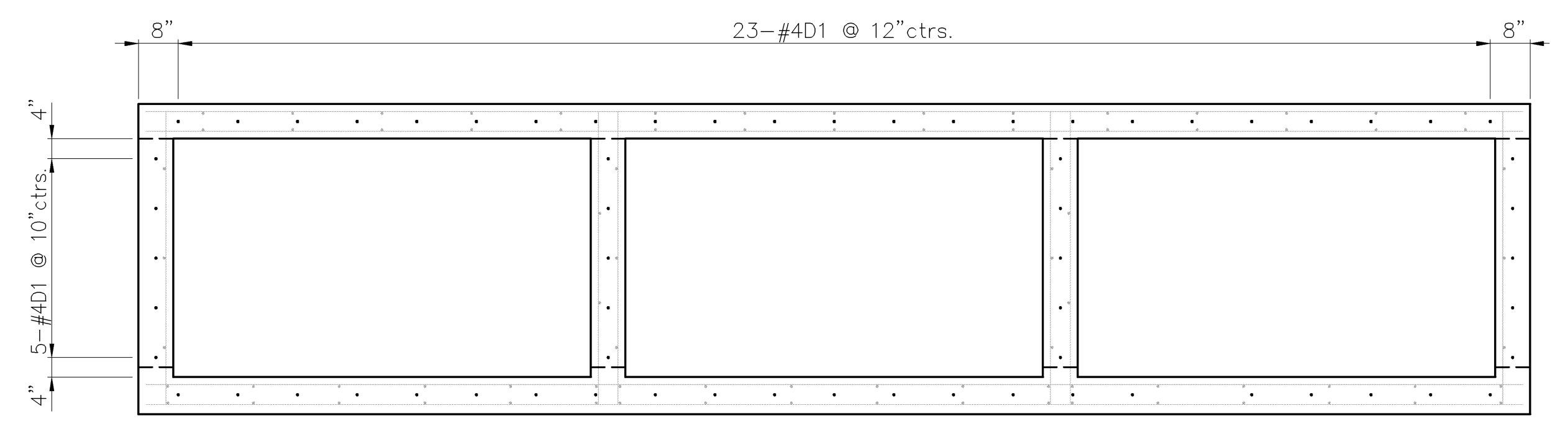


The Contractor shall place a single layer of 50# tar paper bond breaker between the two structures. This work shall not be paid for directly but shall be subsidiary to Grade 4.0 Concrete.

BOND BREAKER DETAIL



TYPICAL SECTION

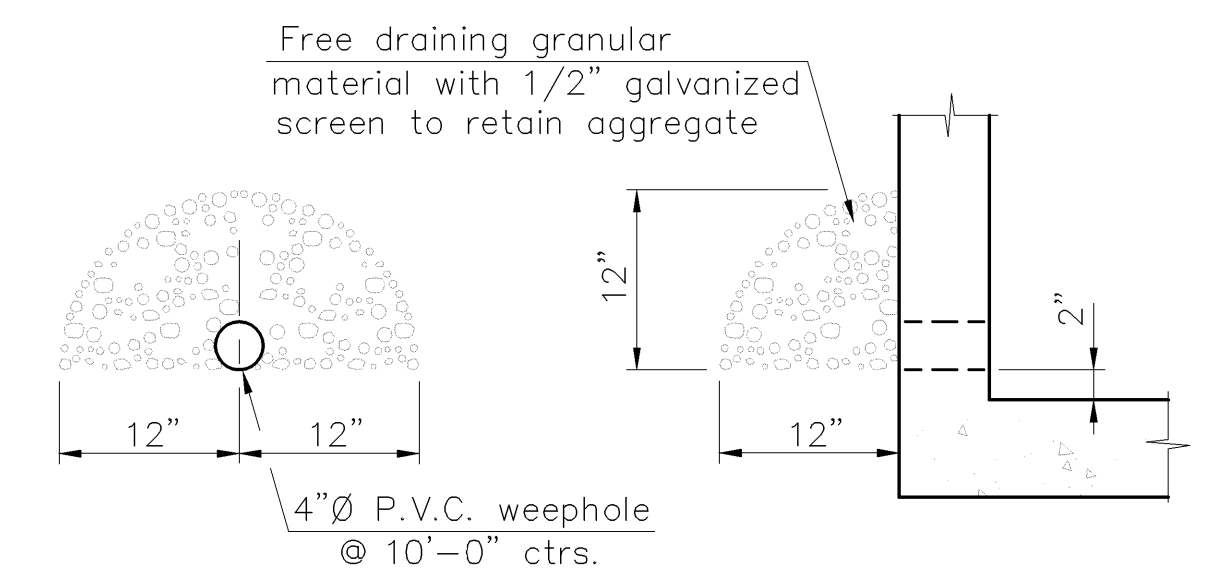


DOWEL LOCATIONS

See "RCB Layout" sheet for location of dowelled joints. Center dowel bars on joint.

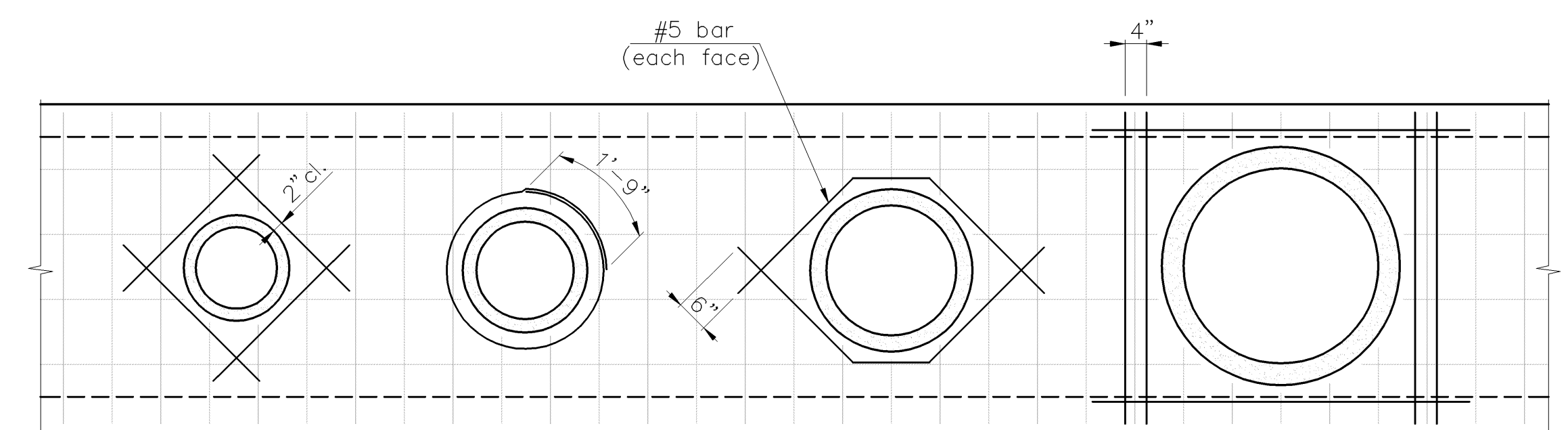
TRANSVERSE JOINT DETAILS

Note: The Contractor shall drill & grout dowel bars into the existing RCB. This work shall not be paid for directly but shall be subsidiary to Reinforcing Steel (Gr. 60). The dowel bars (D1) are included in the Bill of Reinforcing.



WEEPHOLE DETAIL

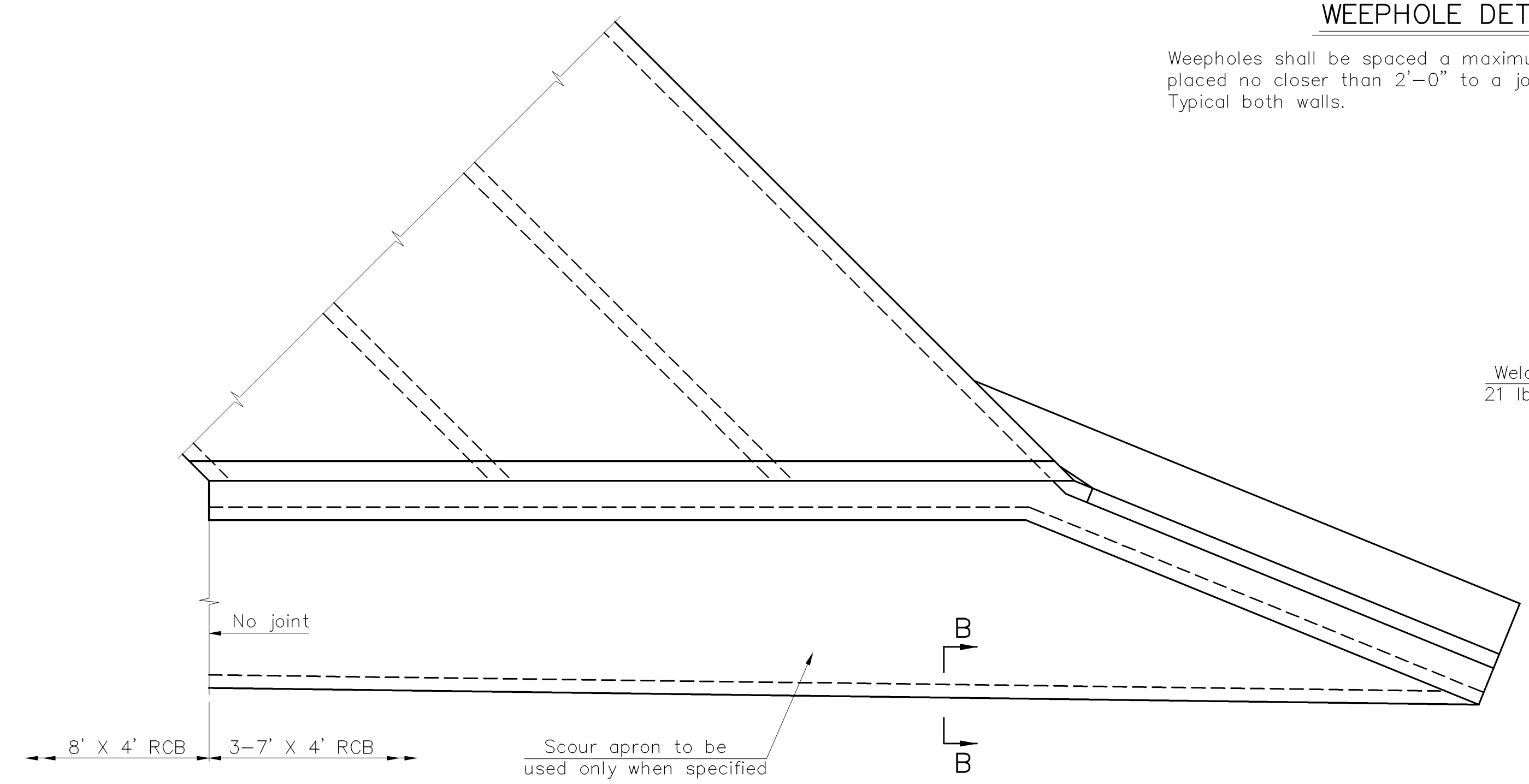
Weepholes shall be spaced a maximum of 10'-0" and placed no closer than 2'-0" to a joint between units. Typical both walls.



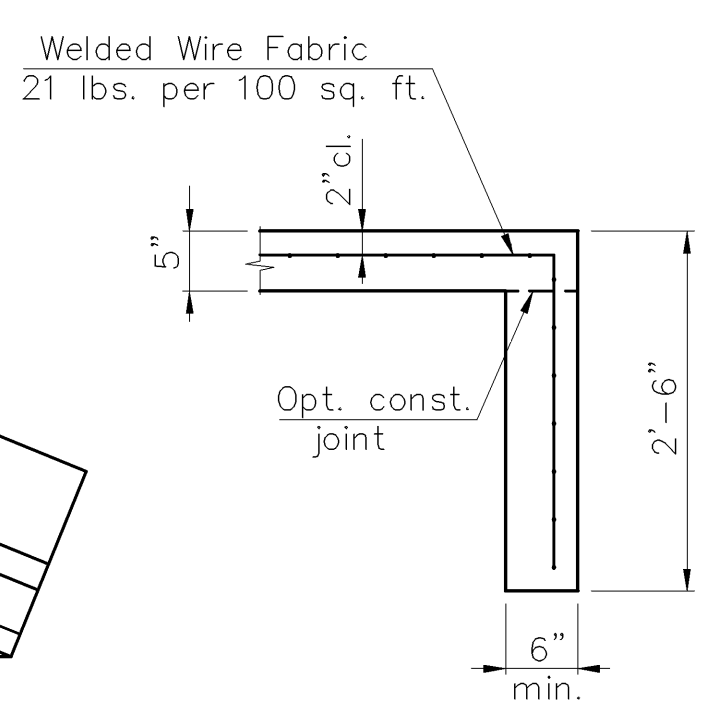
PIPE OPENING DETAIL

(Showing suggested configurations of additional reinforcing)

The reinforcing shall be #5 bars in each face of the walls. Bend and place reinforcing to provide a minimum 2" clearance to the pipe. The additional reinforcing shall not be paid for directly, but shall be subsidiary to "Reinforcing Steel (Gr. 60)." No deductions in reinforcing steel or concrete quantities has been made for the pipe openings.



APRON DETAIL



SECTION B-B

Note: Construction joint may be used at the Contractors option when approved by the Engineer. Reinforcing may be spliced thus with a minimum overlap of 1'-3". No increase in quantities or cost shall be allowed when Contractor elects this option.

| | | | | | | |
|----------------------------|-----------------|-------------------------------------------------------------------------------------------------------------------|------|--------|-------|-----------|
| PROJECT NO. 87 N-0306-01 | | | | | | |
| 3-7' X 4' R.C.B. | | | | | | |
| 29TH STREET NORTH | | | | | | |
| STA. 131+80.17 - 135+82.82 | CITY OF WICHITA | | | | | |
| DESIGNED RSC | SCALE | <table border="1"> <tr> <td>DATE</td> <td>9/2005</td> </tr> <tr> <td>SHEET</td> <td>37 OF 111</td> </tr> </table> | DATE | 9/2005 | SHEET | 37 OF 111 |
| DATE | 9/2005 | | | | | |
| SHEET | 37 OF 111 | | | | | |
| DETAILED DEG | DATE | | | | | |
| QUANTITIES | SHEET | | | | | |

J:\2003PROJ\03546\DWGS\RCB3 1"-4"