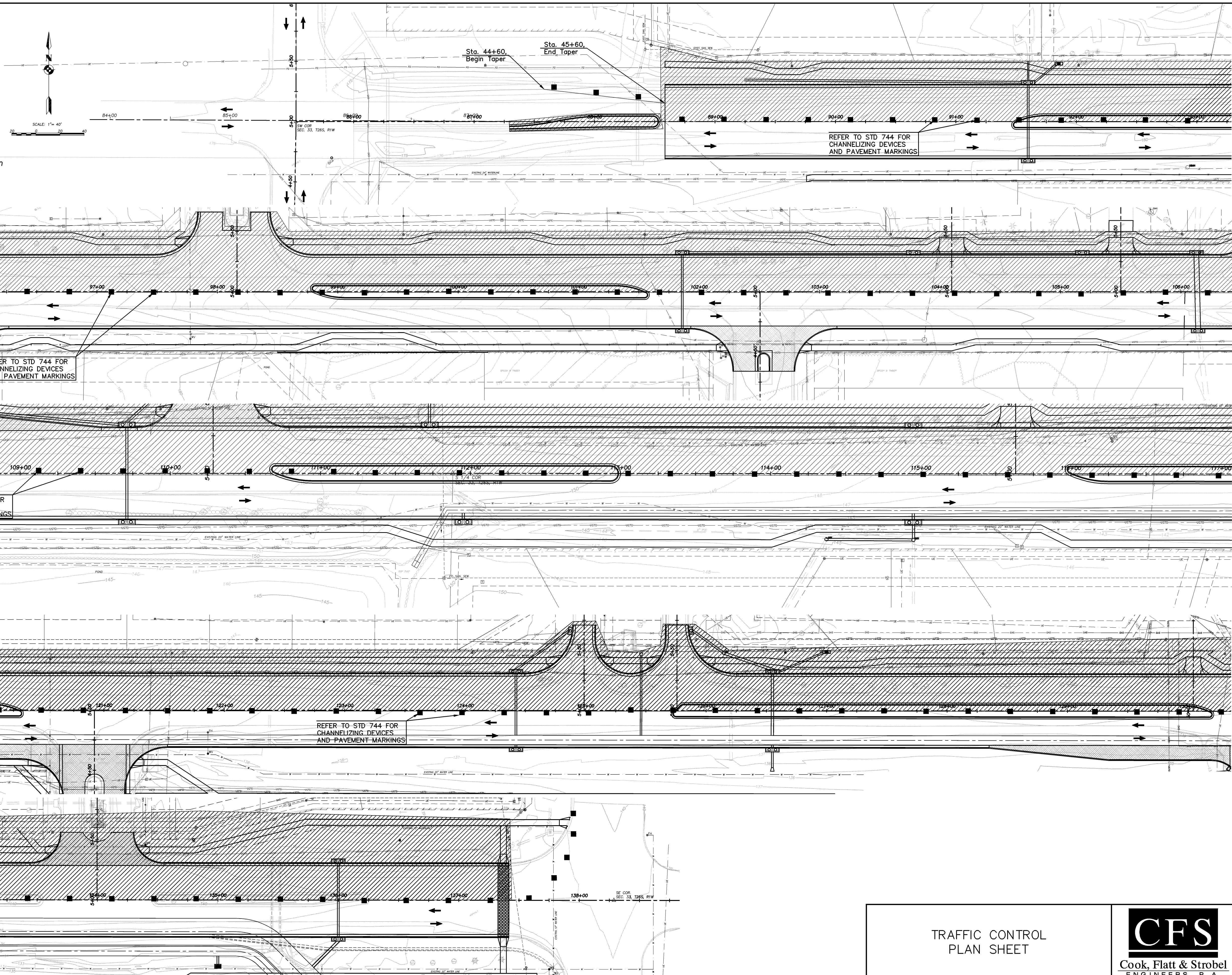


 PHASE II  
 TRAFFIC FLOW

- TRAFFIC CONTROL PHASE II**
1. Shift Traffic to Newly Constructed Eastbound Lanes.
  2. Carry 2 Lanes of Traffic on Newly Constructed Lanes, 1 in Each Direction.
  3. Construct Proposed Westbound Through Lanes.
  4. Construct Entrances and Sidestreets on North.

**NOTE:**  
See Sheets 58, 59 and 60 for Additional Information on Construction Signing, Temporary Pavement Marking, Channelization Devices and Spacing for Signs and Pavement Markings.



REFER TO STD 744 FOR CHANNELIZING DEVICES AND PAVEMENT MARKINGS

REFER TO STD 744 FOR CHANNELIZING DEVICES AND PAVEMENT MARKINGS


REFER TO STD 744 FOR CHANNELIZING DEVICES AND PAVEMENT MARKINGS

REFER TO STD 744 FOR CHANNELIZING DEVICES AND PAVEMENT MARKINGS

Sta. 44+60, Begin Taper

Sta. 45+60, End Taper

2004PROJ\_04565\_DWG\_04565STRPE01

<p>TRAFFIC CONTROL PLAN SHEET</p> <p>29TH STREET NORTH</p>		 <b>Cook, Flatt &amp; Strobel</b> ENGINEERS, P. A.
DESIGNED KKH	SCALE	
DETAILED KKH	DATE 3-2005	CITY OF WICHITA
QUANTITIES KKH	SHEET 58 OF 111	