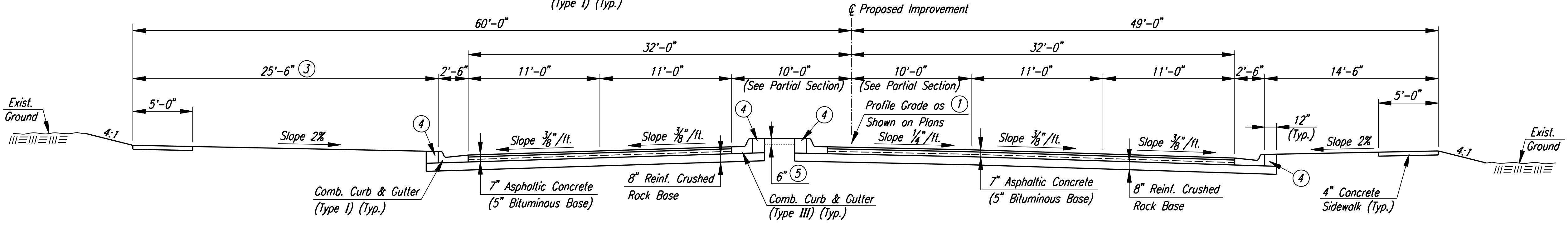
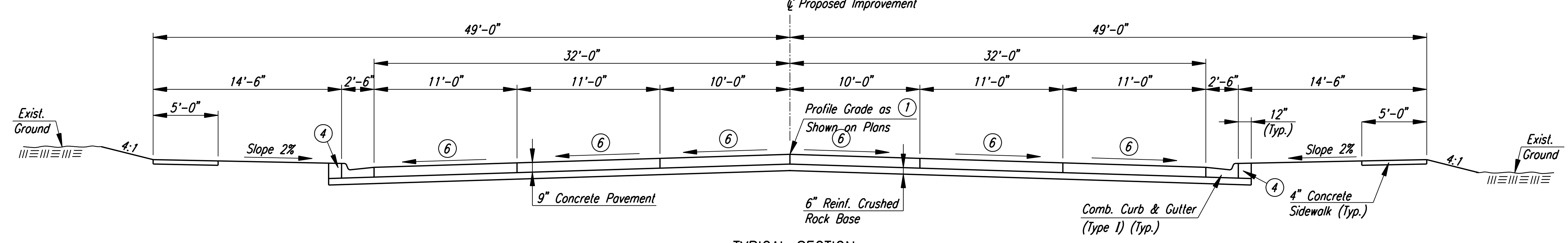


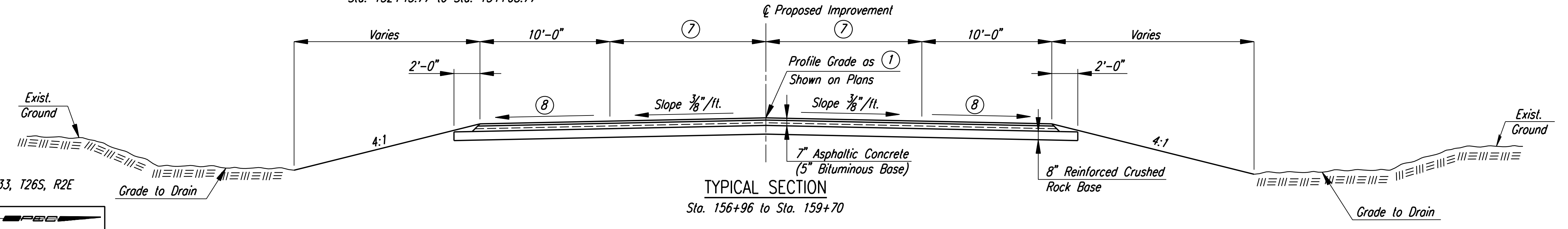
TYPICAL SECTION
Sta. 139+80 to Sta. 149+56



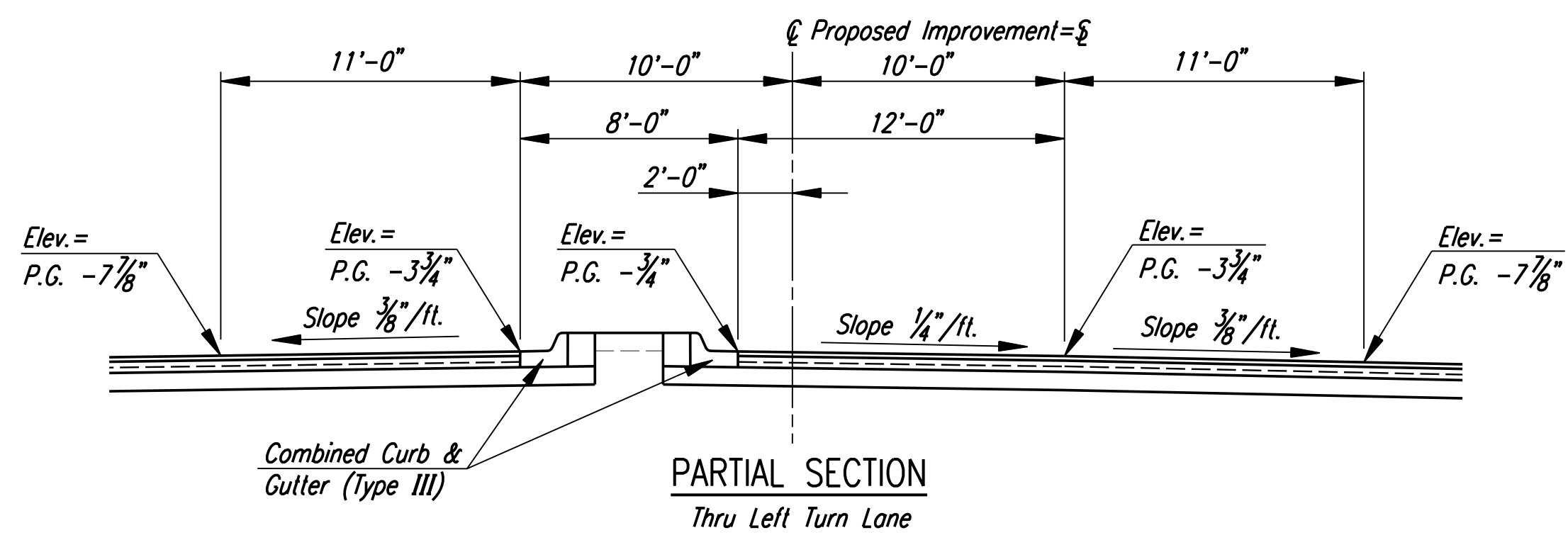
TYPICAL SECTION
Sta. 149+56 to Sta. 152+43.77
Sta. 154+08.77 to Sta. 156+96 (mirrored median)



TYPICAL SECTION
Sta. 152+43.77 to Sta. 154+08.77



TYPICAL SECTION
Sta. 156+96 to Sta. 159+70



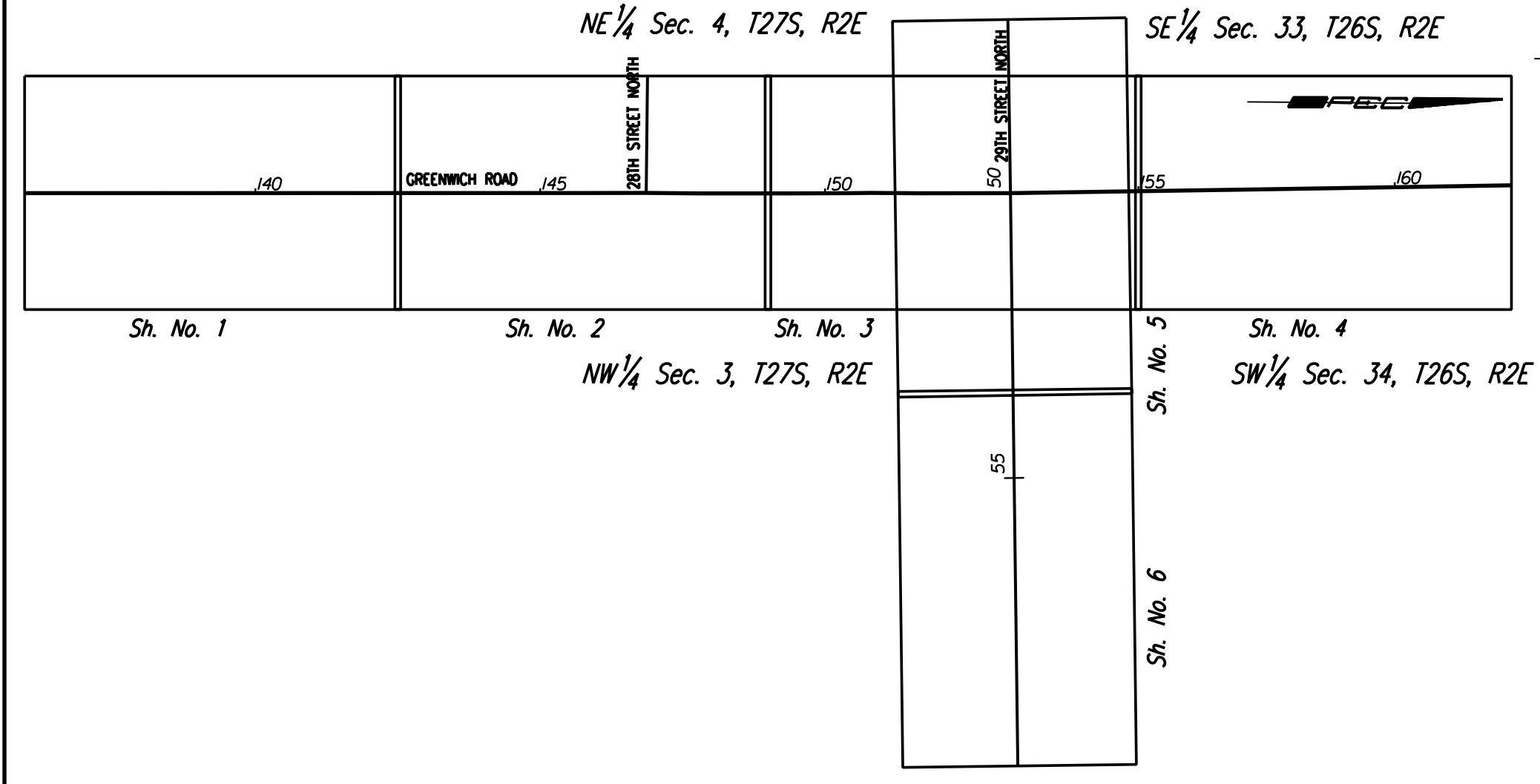
PARTIAL SECTION
Thru Left Turn Lane

- ① Profile Grade is the theoretical top of pavement elevation at ξ
- ② Varies from 6' at Sta. 148+17.49 to 10' at Sta. 149+56.
- ③ Location of Sidewalk varies. See Plans.
- ④ Backfill behind curb. Quantities for this work are included in the Earthwork Summary Table.
- ⑤ Top 6" shall be material suitable to support vegetation per compaction diagram.
- ⑥ See Intersection Details for spot elevations.
- ⑦ Varies from 22' at Sta. 156+96 to 12' at Sta. 159+62.67.
- ⑧ Cross Slope Varies from $\frac{3}{8}$ "/ft. at Sta. 156+96 to $\frac{1}{2}$ "/ft. at Sta. 158+00.

CRUSHED ROCK GRADATION REQUIREMENTS
PERCENT OF AGGREGATE RETAINED

2-1/2"	0
3/4"	20-60
#4	50-80
#40	80-94
#200	90-98

Rock quality shall conform to the requirements specified by the KDOT 1990 Edition Standard Specification Subsection 1102 for Durability Class I.



DSNR: JPS OPER: DRP SCALE: 1/2005/05777/TYPICAL/05777-TYPSEC.DGN 2-2-2006 16:00:00 LAST REV: 8-30-2006 BY: svb

No.		Revision		By		Date	
GREENWICH ROAD							
TYPICAL SECTIONS							
JAMES L. ARMOUR, P.E. - CITY ENGINEER CITY OF WICHITA PROJECT NO. 472-84415 Professional Engineering Consultants, P.A. 303 S. TOPEKA • WICHITA, KANSAS 67202 316-262-2691 • FAX 316-262-3003							
Designed by	JPS	Job No.	05777	Sh.		2 of 81	
Drawn by	DRP	Date	Feb., 2006				