

Utility Owners

Cox Communications
Engineering Dept.
801 E. Douglas
Wichita, KS 67202
Marc Henderson 262-4270, Ext. 745
Mark Anaya 262-4270, Ext. 743
Fax 262-4353

Westar Energy
1900 E. Central (3rd Floor)
P.O. Box 208
Wichita, KS 67214
Randy Truitt Office 261-6512
Randy Truitt Mobile 258-4234
Fax 261-6423

SBC
Wichita Central Unit
154 N. Broadway, Rm. 210
Wichita, KS 67202
Jim Toben 268-2759
Fax 268-3110

Kansas Gas Service
1021 E. 26th St. N.
Wichita, KS 67219
Jim Coc 832-3126
Fax 831-5670

Wichita Water & Sewer Department
8th Floor - City Hall
455 N. Main
Wichita, KS 67202
Bill Perkins or Paul Bryant 268-4555
Fax 268-4514

Butler County RWD #5
PO Box 56
Benton, KS 67017
Pat Shaffer 778-1631

Sedgwick County RWD #1
PO Box 580
Kechi, KS 67067
Donna Burk 744-3713

Colleyville Resources Crude Transportation
(Formerly Farmland)
P.O. Box 3516
411 NE Washington Blvd.
Bartlesville, OK 74006
Bill Edens (918) 333-4111, Ext. 333
Fax (918) 333-4173

KANEB Pipe Line Co.
7340 W. 21st Street North, Suite 200
Wichita, KS 67205
Dale Smith 773-9000
Fax 773-9005

The Wichita Airport Authority
Administration Building
2173 Air Cargo Road
Wichita, KS 67209
Don Dearmont 946-4715
Fax 946-1898

Note: Elevations shown along Curb & Gutter are to High Edge and Top of Curb

LEGEND

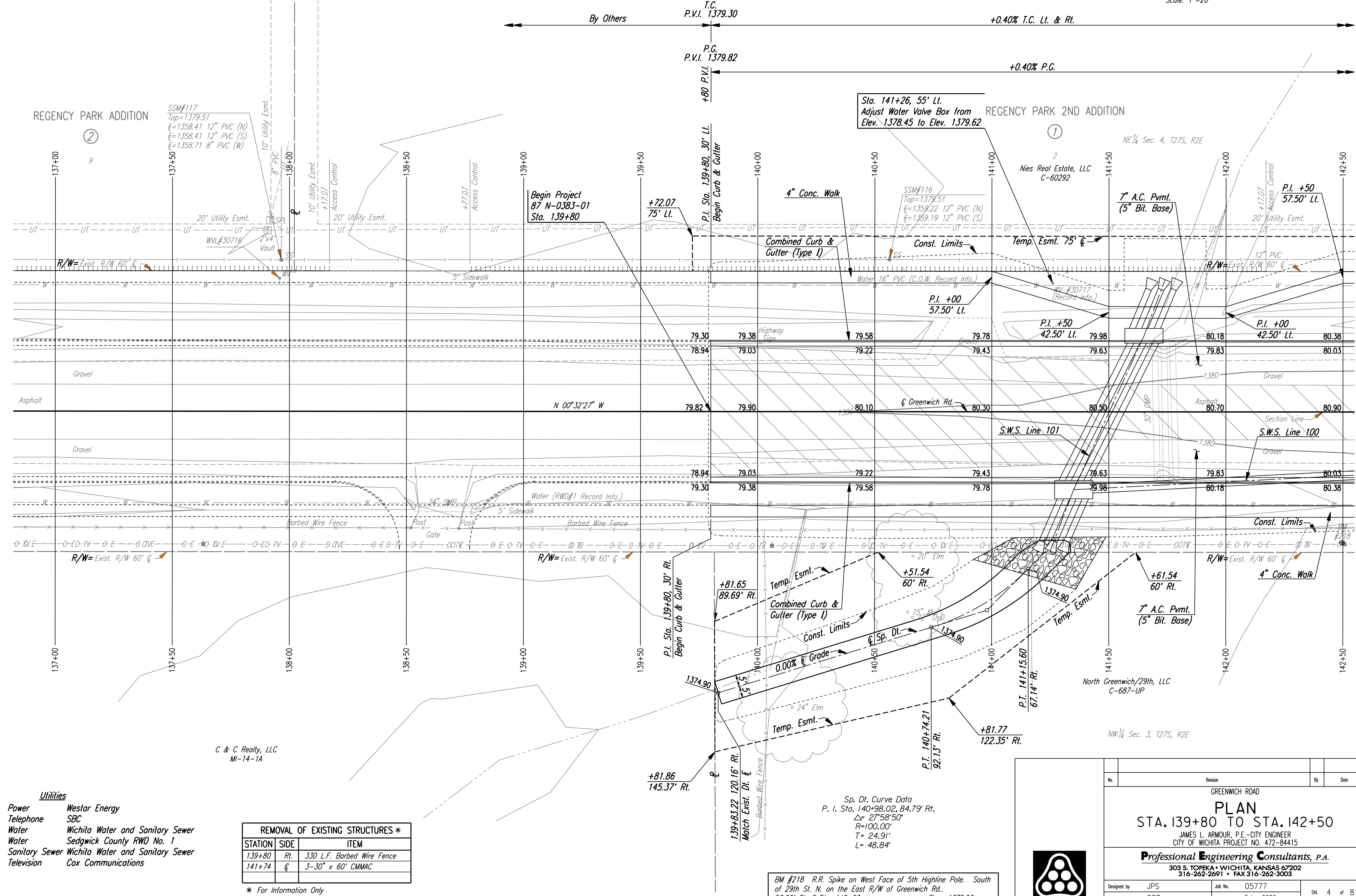
Pavement Removal

Utilities
Power Westar Energy
Telephone SBC
Water Wichita Water and Sanitary Sewer
Water Sedgwick County RWD No. 1
Sanitary Sewer Wichita Water and Sanitary Sewer
Television Cox Communications

REMOVAL OF EXISTING STRUCTURES *		
STATION	SIDE	ITEM
139+80	Rt.	3.30 L.F. Barbed Wire Fence
141+74	℄	3-30" x 60' CMMAC

* For Information Only

Scale: 1"=20'



Sp. Dt. Curve Data
P. I. Sta. 140+98.02, 84.79' Rt.
Δ= 27°58'50"
R=100.00'
T= 24.91'
L= 48.84'

BM #218 R.R. Spike on West Face of 5th Highline Pole. South of 29th St. N. on the East R/W of Greenwich Rd.
56.00' Rt. @ Sta. 142+50. Elev.=1379.96

No.	Revision	By	Date
GREENWICH ROAD			
PLAN			
STA. 139+80 TO STA. 142+50			
JAMES L. ARMOUR, P.E.-CITY ENGINEER CITY OF WICHITA PROJECT NO. 472-84415			
Professional Engineering Consultants, P.A. 303 S. TOPKA • WICHITA, KANSAS 67202 316-262-2691 • FAX 316-262-3003			
Designed by	JPS	Job No.	05777
Drawn by	DRP	Date	Feb., 2006
			Sht. 4 of 81

DSNR: JPS OPER: DRP SCALE: 20
 1/2005/05777/PLAN/05777-PL13980.DGN 2-2-2006 16:00:00 LAST REV: 8-30-2006 BY: svb