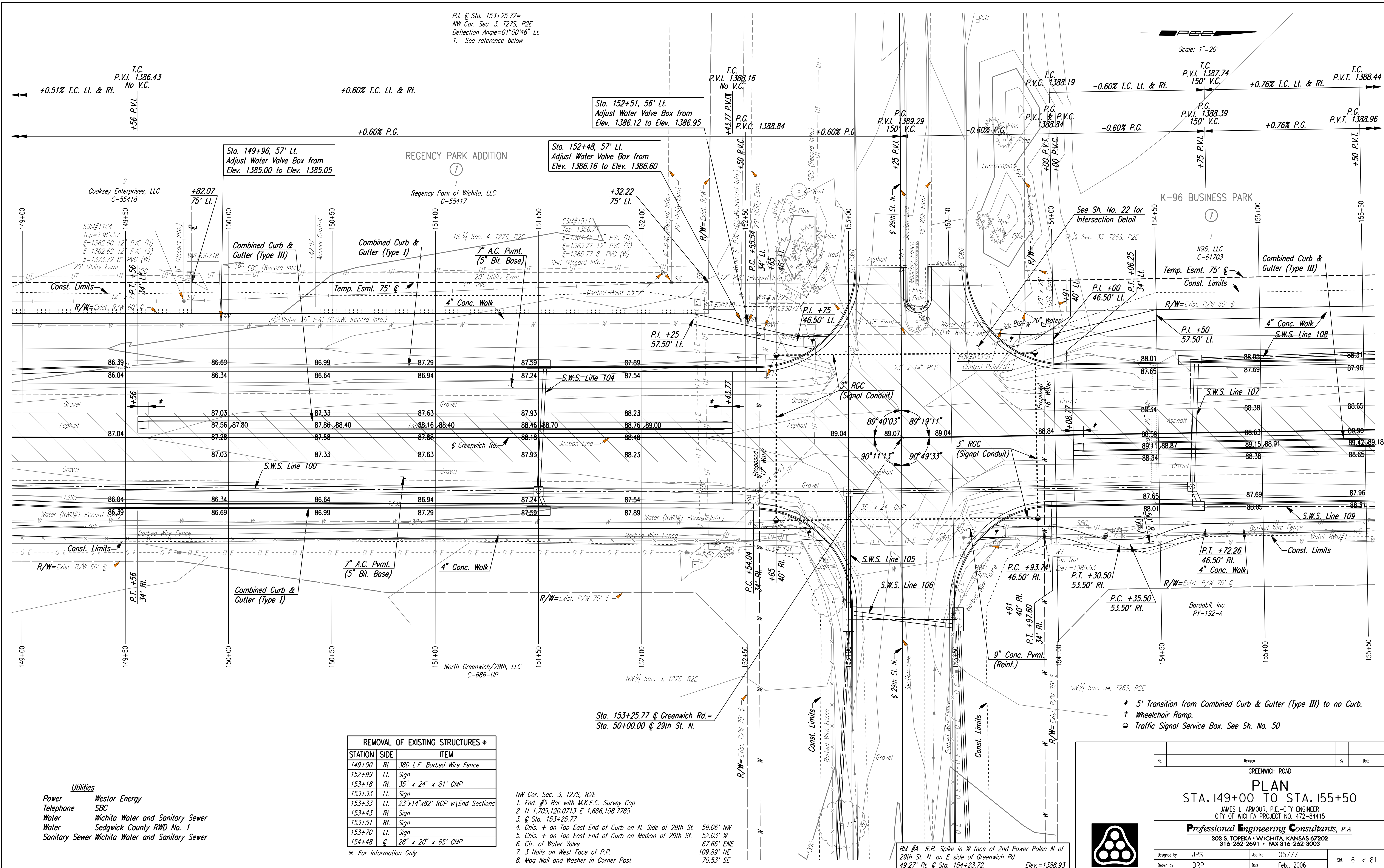


DSNR: JPS OPER: DRP SCALE: 20
 1/2005/05777/PLAN/05777-PL14900.DGN 2-2-2006 16:00:00 LAST REV: 8-30-2006 BY: svb



P.I. @ Sta. 153+25.77=
 NW Cor. Sec. 3, T27S, R2E
 Deflection Angle=01°00'46" LI.
 1. See reference below

Scale: 1"=20'

Sta. 149+96, 57' LI.
 Adjust Water Valve Box from
 Elev. 1385.00 to Elev. 1385.05

Sta. 152+48, 57' LI.
 Adjust Water Valve Box from
 Elev. 1386.12 to Elev. 1386.60

Sta. 153+25.77 @ Greenwich Rd.=
 Sta. 50+00.00 @ 29th St. N.

REMOVAL OF EXISTING STRUCTURES *		
STATION	SIDE	ITEM
149+00	Rt.	380 L.F. Barbed Wire Fence
152+99	Lt.	Sign
153+18	Rt.	35" x 24" x 81' CMP
153+33	Lt.	Sign
153+33	Lt.	23"x14"x82' RCP w/End Sections
153+43	Rt.	Sign
153+51	Rt.	Sign
153+70	Lt.	Sign
154+48	℄	28" x 20" x 65' CMP

- NW Cor. Sec. 3, T27S, R2E
1. Fnd. #5 Bar with M.K.E.C. Survey Cap
 2. N 1,705,120.0713 E 1,686,158.7785
 3. @ Sta. 153+25.77
 4. Chis. + on Top East End of Curb on N. Side of 29th St. 59.06' NW
 5. Chis. + on Top East End of Curb on Median of 29th St. 52.03' W
 6. Ctr. of Water Valve 67.66' ENE
 7. 3 Nails on West Face of P.P. 109.89' NE
 8. Mag Nail and Washer in Corner Post 70.53' SE

- Utilities**
- Power Westar Energy
 - Telephone SBC
 - Water Wichita Water and Sanitary Sewer
 - Water Sedgwick County RWD No. 1
 - Sanitary Sewer Wichita Water and Sanitary Sewer

- * 5' Transition from Combined Curb & Gutter (Type III) to no Curb.
- † Wheelchair Ramp.
- Traffic Signal Service Box. See Sh. No. 50

BM #A R.R. Spike in W face of 2nd Power Pole N of
 29th St. N. on E side of Greenwich Rd.
 49.27' Rt. @ Sta. 154+23.72. Elev.=1388.93

No.	Revision	By	Date
GREENWICH ROAD			
PLAN			
STA. 149+00 TO STA. 155+50			
JAMES L. ARMOUR, P.E. - CITY ENGINEER CITY OF WICHITA PROJECT NO. 472-84415			
Professional Engineering Consultants, P.A. 303 S. TOPKA • WICHITA, KANSAS 67202 316-262-2691 • FAX 316-262-3003			
Designed by	JPS	Job No.	05777
Drawn by	DRP	Date	Feb., 2006
			Sht. 6 of 81

