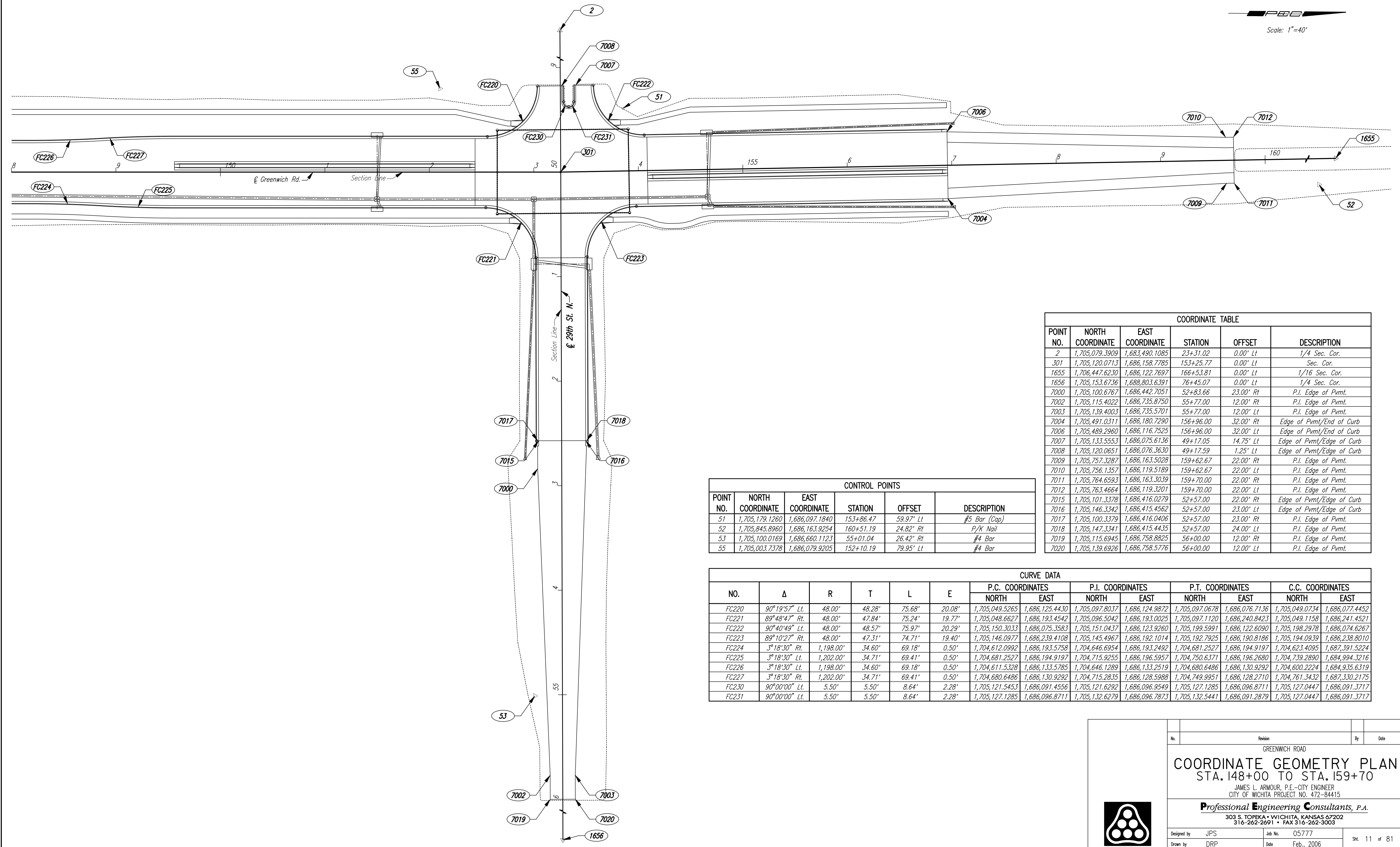


Scale: 1"=40'



COORDINATE TABLE					
POINT NO.	NORTH COORDINATE	EAST COORDINATE	STATION	OFFSET	DESCRIPTION
2	1,705,079.3909	1,683,490.1085	23+31.02	0.00' Lt	1/4 Sec. Cor.
301	1,705,120.0713	1,686,158.7785	153+25.77	0.00' Lt	Sec. Cor.
1655	1,706,447.6230	1,686,122.7697	166+53.81	0.00' Lt	1/16 Sec. Cor.
1656	1,705,153.6736	1,688,803.6391	76+45.07	0.00' Lt	1/4 Sec. Cor.
7000	1,705,100.6767	1,686,442.7051	52+83.66	23.00' Rt	P.I. Edge of Pvmt.
7002	1,705,115.4022	1,686,735.8750	55+77.00	12.00' Rt	P.I. Edge of Pvmt.
7003	1,705,139.4003	1,686,735.5701	55+77.00	12.00' Lt	P.I. Edge of Pvmt.
7004	1,705,491.0311	1,686,180.7290	156+96.00	32.00' Rt	Edge of Pvmt/End of Curb
7006	1,705,489.2960	1,686,116.7525	156+96.00	32.00' Lt	Edge of Pvmt/End of Curb
7007	1,705,133.5553	1,686,075.6136	49+17.05	14.75' Lt	Edge of Pvmt/Edge of Curb
7008	1,705,120.0651	1,686,076.3630	49+17.59	1.25' Lt	Edge of Pvmt/Edge of Curb
7009	1,705,757.3287	1,686,163.5028	159+62.67	22.00' Rt	P.I. Edge of Pvmt.
7010	1,705,756.1357	1,686,119.5189	159+62.67	22.00' Lt	P.I. Edge of Pvmt.
7011	1,705,764.6593	1,686,163.3039	159+70.00	22.00' Rt	P.I. Edge of Pvmt.
7012	1,705,763.4664	1,686,119.3201	159+70.00	22.00' Lt	P.I. Edge of Pvmt.
7015	1,705,101.3378	1,686,416.0279	52+57.00	22.00' Rt	Edge of Pvmt/Edge of Curb
7016	1,705,146.3342	1,686,415.4562	52+57.00	23.00' Lt	Edge of Pvmt/Edge of Curb
7017	1,705,100.3379	1,686,416.0406	52+57.00	23.00' Rt	P.I. Edge of Pvmt.
7018	1,705,147.3341	1,686,415.4435	52+57.00	24.00' Lt	P.I. Edge of Pvmt.
7019	1,705,115.6945	1,686,758.8825	56+00.00	12.00' Rt	P.I. Edge of Pvmt.
7020	1,705,139.6926	1,686,758.5776	56+00.00	12.00' Lt	P.I. Edge of Pvmt.

CONTROL POINTS					
POINT NO.	NORTH COORDINATE	EAST COORDINATE	STATION	OFFSET	DESCRIPTION
51	1,705,179.1260	1,686,097.1840	153+86.47	59.97' Lt	#5 Bar (Cap)
52	1,705,845.8960	1,686,163.9254	160+51.19	24.82' Rt	P/K Nail
53	1,705,100.0169	1,686,660.1123	55+01.04	26.42' Rt	#4 Bar
55	1,705,003.7378	1,686,079.9205	152+10.19	79.95' Lt	#4 Bar

CURVE DATA													
NO.	Δ	R	T	L	E	P.C. COORDINATES		P.I. COORDINATES		P.T. COORDINATES		C.C. COORDINATES	
						NORTH	EAST	NORTH	EAST	NORTH	EAST	NORTH	EAST
FC220	90°19'57" Lt.	48.00'	48.28'	75.68'	20.08'	1,705,049.5265	1,686,125.4430	1,705,097.8037	1,686,124.9872	1,705,097.0678	1,686,076.7136	1,705,049.0734	1,686,077.4452
FC221	89°48'47" Rt.	48.00'	47.84'	75.24'	19.77'	1,705,048.6627	1,686,193.4542	1,705,096.5042	1,686,193.0025	1,705,097.1120	1,686,240.8423	1,705,049.1158	1,686,241.4521
FC222	90°40'49" Lt.	48.00'	48.57'	75.97'	20.29'	1,705,150.3033	1,686,075.3583	1,705,151.0437	1,686,123.9260	1,705,199.5991	1,686,122.6090	1,705,198.2978	1,686,074.6267
FC223	89°10'27" Rt.	48.00'	47.31'	74.71'	19.40'	1,705,146.0977	1,686,239.4108	1,705,145.4967	1,686,192.1014	1,705,192.7925	1,686,190.8186	1,705,194.0939	1,686,238.8010
FC224	3°18'30" Rt.	1,198.00'	34.60'	69.18'	0.50'	1,704,612.0992	1,686,193.5758	1,704,646.6954	1,686,193.2492	1,704,681.2527	1,686,194.9197	1,704,623.4095	1,687,391.5224
FC225	3°18'30" Lt.	1,202.00'	34.71'	69.41'	0.50'	1,704,681.2527	1,686,194.9197	1,704,715.9255	1,686,196.5957	1,704,750.6371	1,686,196.2680	1,704,739.2890	1,684,994.3216
FC226	3°18'30" Lt.	1,198.00'	34.60'	69.18'	0.50'	1,704,611.5328	1,686,133.5785	1,704,646.1289	1,686,133.2519	1,704,680.6486	1,686,130.9292	1,704,600.2224	1,684,935.6319
FC227	3°18'30" Rt.	1,202.00'	34.71'	69.41'	0.50'	1,704,680.6486	1,686,130.9292	1,704,715.2835	1,686,128.5988	1,704,749.9951	1,686,128.2710	1,704,761.3432	1,687,330.2175
FC230	90°00'00" Lt.	5.50'	5.50'	8.64'	2.28'	1,705,121.5453	1,686,091.4556	1,705,121.6292	1,686,096.9549	1,705,127.1285	1,686,096.8711	1,705,127.0447	1,686,091.3717
FC231	90°00'00" Lt.	5.50'	5.50'	8.64'	2.28'	1,705,127.1285	1,686,096.8711	1,705,132.6279	1,686,096.7873	1,705,132.5441	1,686,091.2879	1,705,127.0447	1,686,091.3717

DSNR: JPS OPER: DRP SCALE: 40
 I:/2005/05777/GEOMETRY/05777-COORD14800.DGN 2-2-2006 16:00:00 LAST REV: 8-30-2006 BY: svb

No.	Revision	By	Date
GREENWICH ROAD			
COORDINATE GEOMETRY PLAN			
STA. 148+00 TO STA. 159+70			
JAMES L. ARMOUR, P.E. - CITY ENGINEER CITY OF WICHITA PROJECT NO. 472-84415			
Professional Engineering Consultants, P.A.			
303 S. TOPEKA • WICHITA, KANSAS 67202 316-262-2691 • FAX 316-262-3003			
Designed by	JPS	Job No.	05777
Drawn by	DRP	Date	Feb., 2006
			Sht. 11 of 81