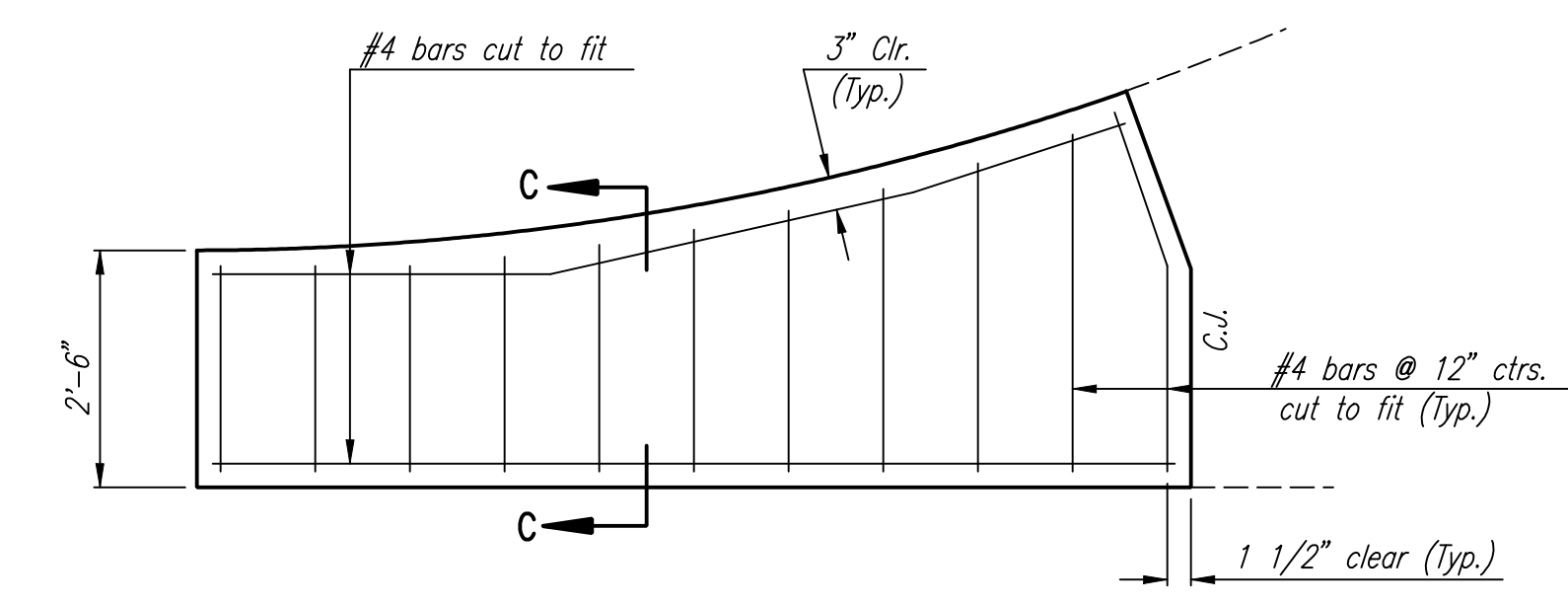
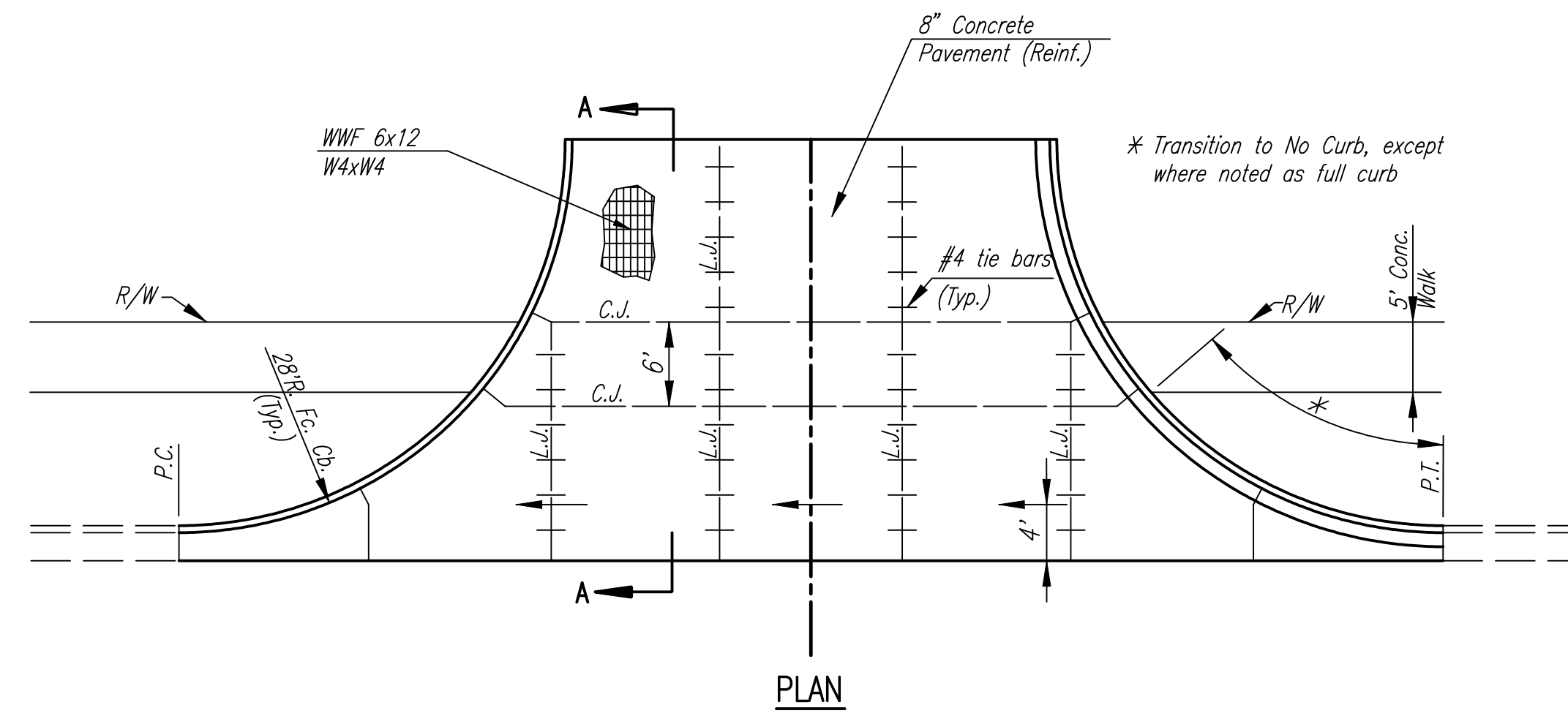
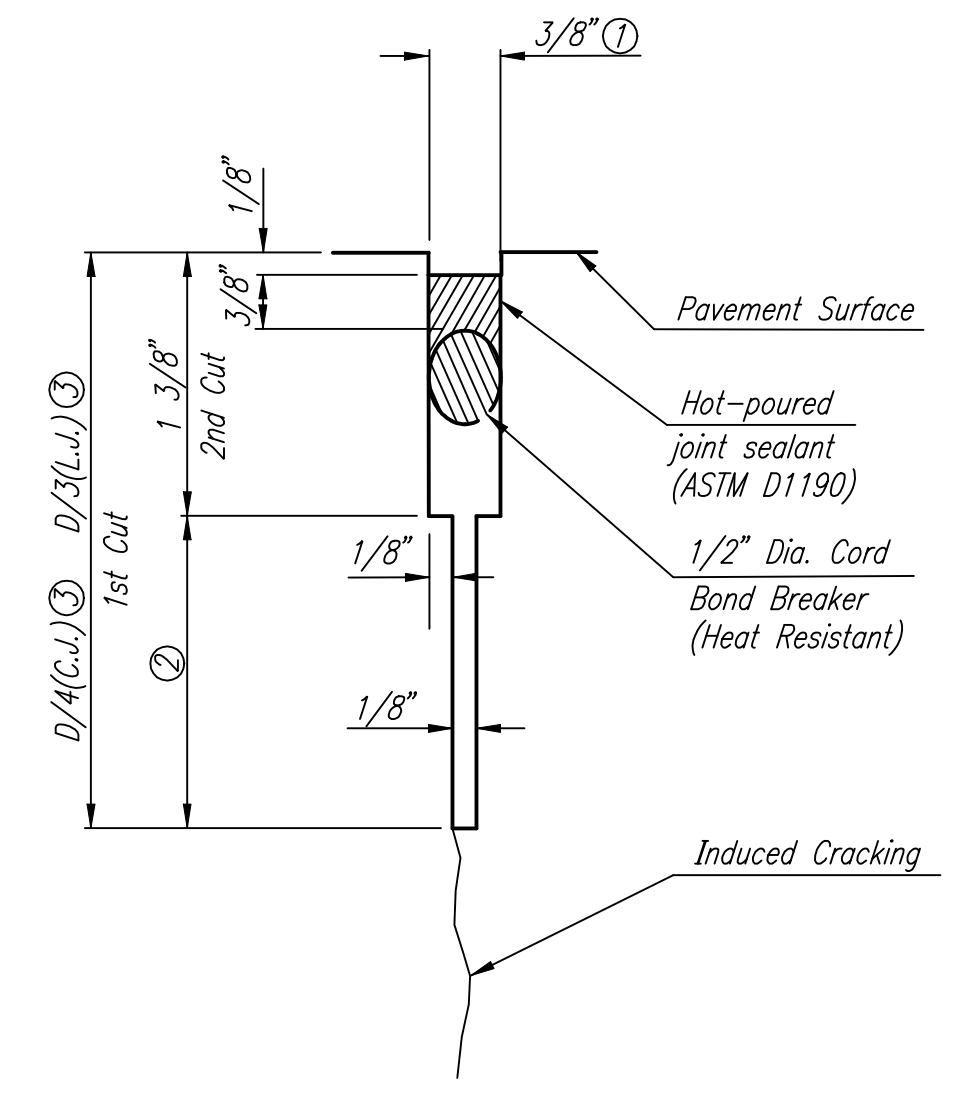


DSNR: I:/2005/05777/STANDARDS/05777-VALGUTDL.DGN 8-25-2005 13:33:14 LAST REV: 8-30-2006 BY: svb

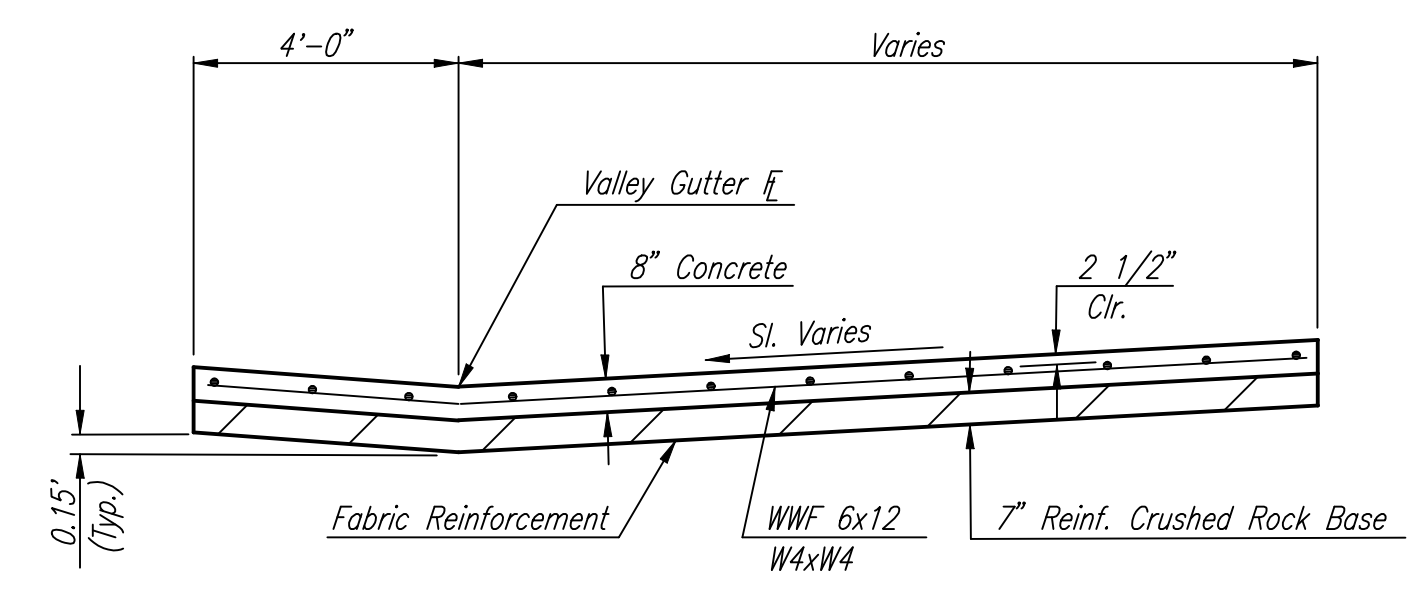


WING REINFORCING DETAIL
NOTE: OMIT WIRE FABRIC REINFORCING IN THIS SECTION.



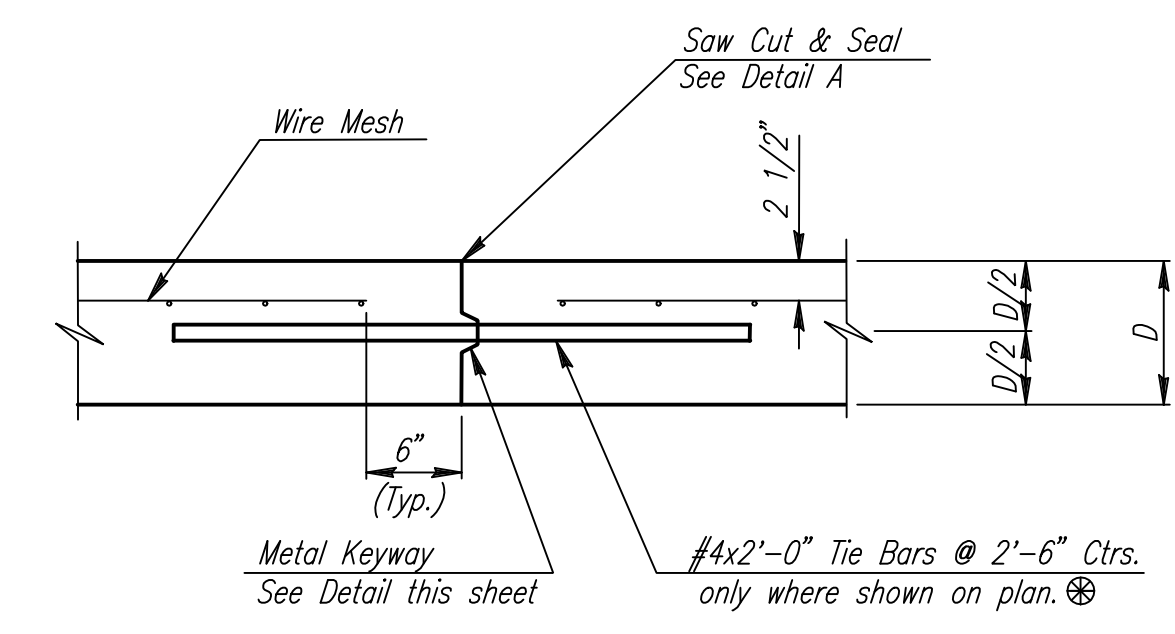
DETAIL A

- ① To be accomplished in 2 cuts for Longitudinal Joints and Contraction Joints. Initial cut to be 1/8" wide.
- ② Eliminate bottom of cut when metal keyway is used as part of Longitudinal or Transverse Construction Joint and at Doweled Construction Joint Locations.
- ③ 1 1/2" Minimum

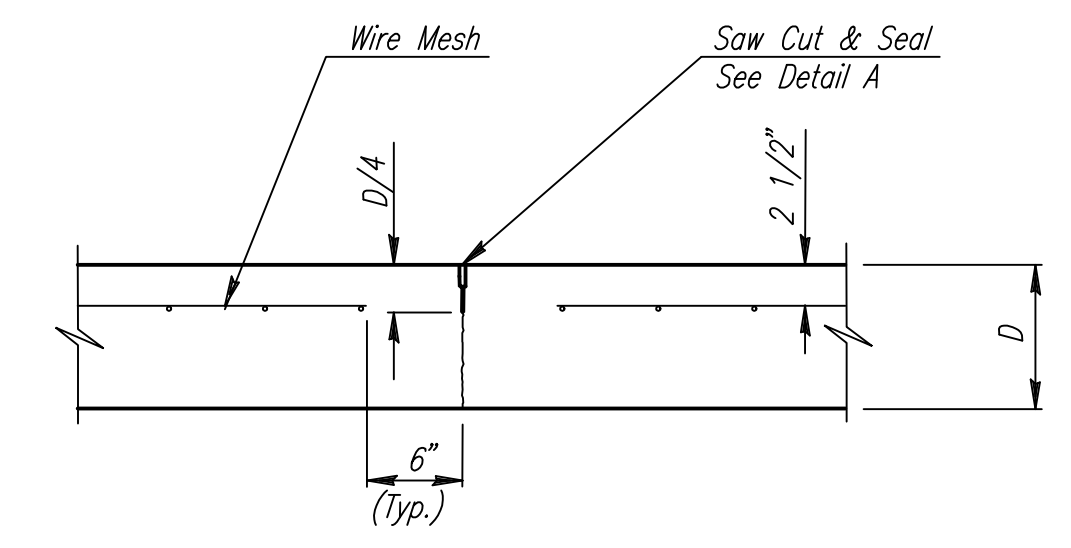


SECTION A-A

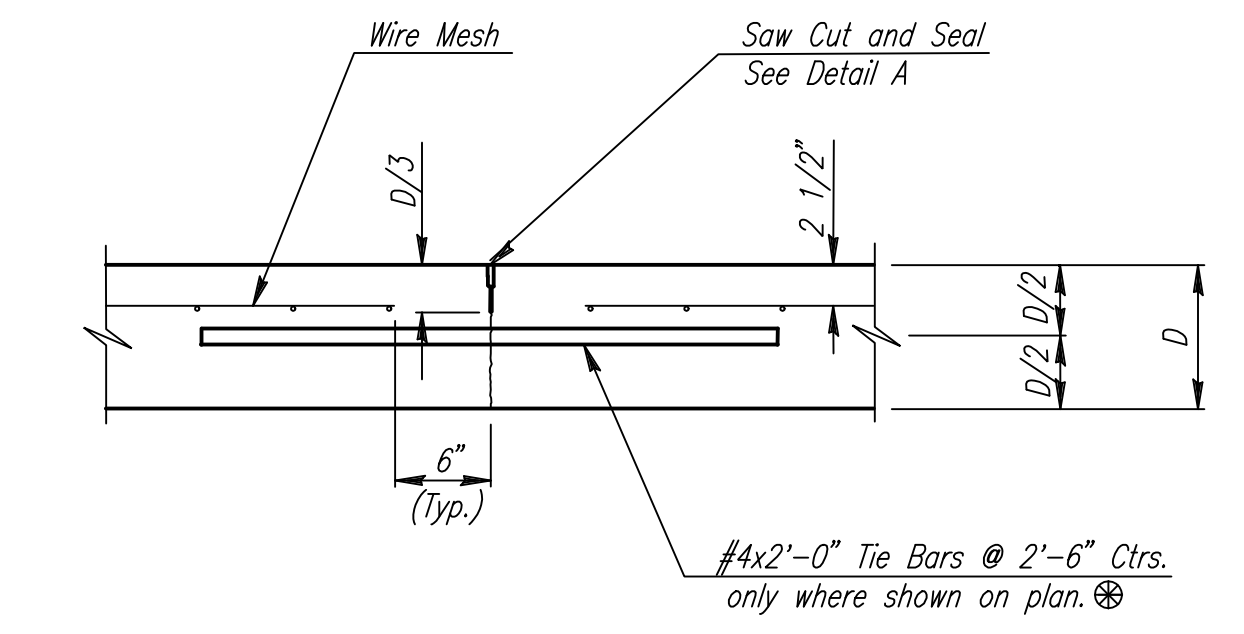
NOTE: OMIT REINFORCING MESH AT ALL JOINTS
NOTE: ALL CONCRETE VALLEY GUTTER REINFORCEMENT SHALL BE ADEQUATELY SUPPORTED BY BAR CHAIRS IN THE REQUIRED POSITION UNLESS APPROVED OTHERWISE BY THE ENGINEER.



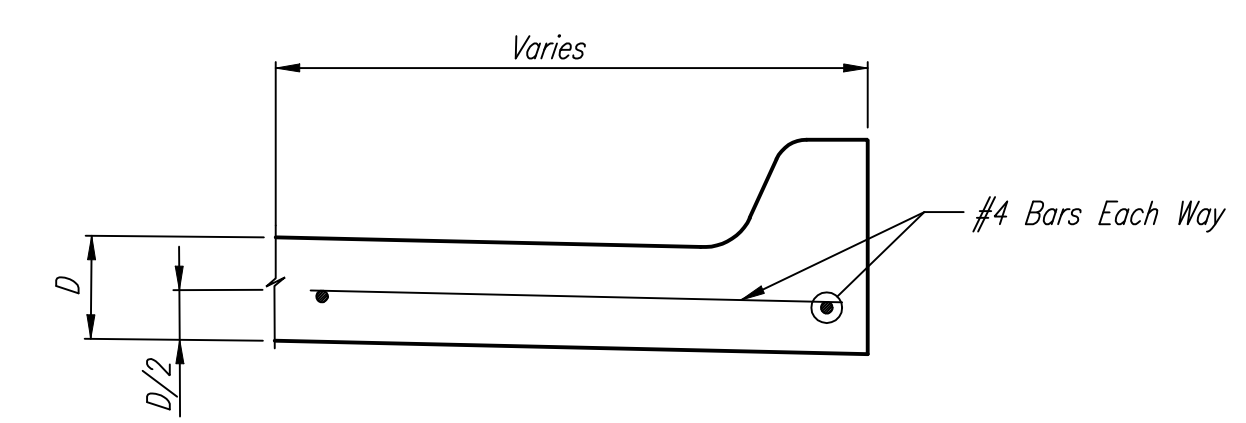
**LONGITUDINAL CONSTRUCTION JOINT DETAIL
REINFORCED PAVEMENT
(TRANSVERSE SECTION)
(ALTERNATE L.J.)**



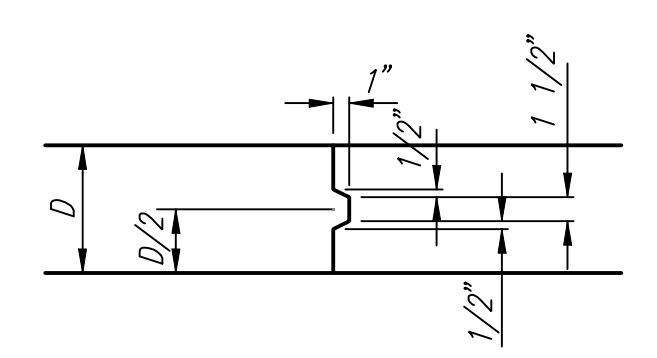
**CONTRACTION JOINT DETAIL
REINFORCED PAVEMENT
(C.J.)**



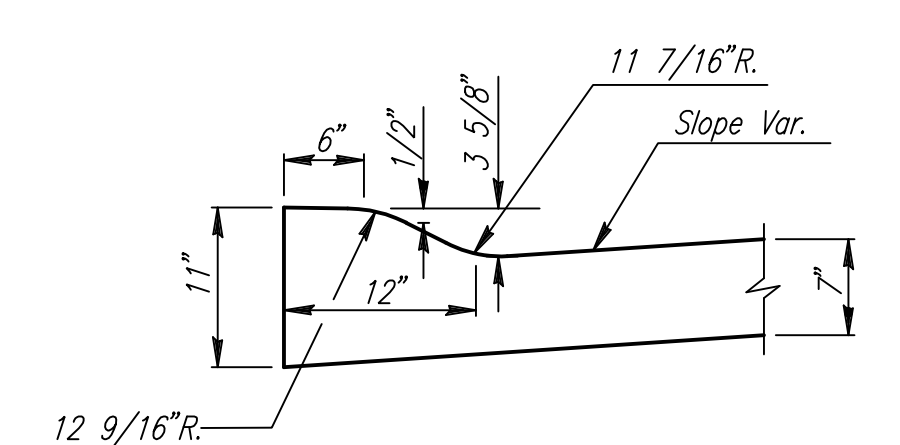
**LONGITUDINAL JOINT DETAIL
REINFORCED PAVEMENT
(TRANSVERSE SECTION)**



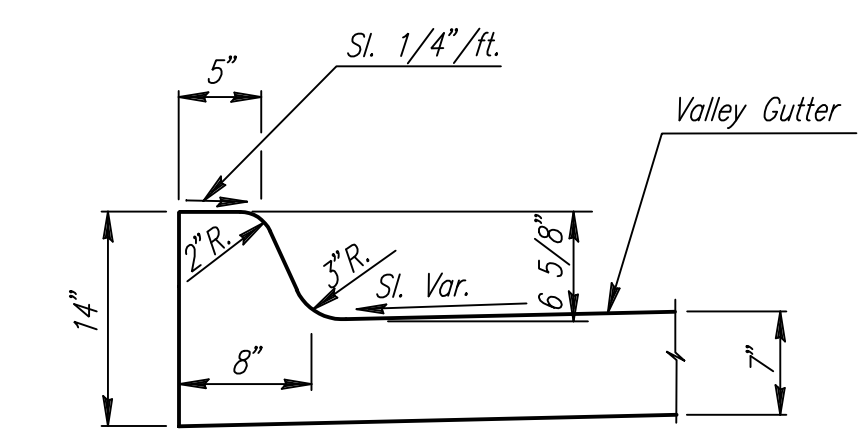
SECTION C-C



KEYWAY DETAIL



**DETAIL B
(ROLL-TYPE CURB)(3 5/8")**



**DETAIL C
(STANDARD CURB)(6 5/8")**

MONOLITHIC EDGE CURB

No.	Revision	By	Date
GREENWICH ROAD SPECIAL ENTRANCES FULL HEIGHT CURB JAMES L. ARMOUR, P.E.—CITY ENGINEER CITY OF WICHITA PROJECT NO. 472-84415 Professional Engineering Consultants, P.A. 303 S. TOPEKA • WICHITA, KANSAS 67202 316-262-2691 • FAX 316-262-3003			
Designed by	Job No. 05777	Sht. 26 of 81	
Drawn by	Date Feb., 2006		