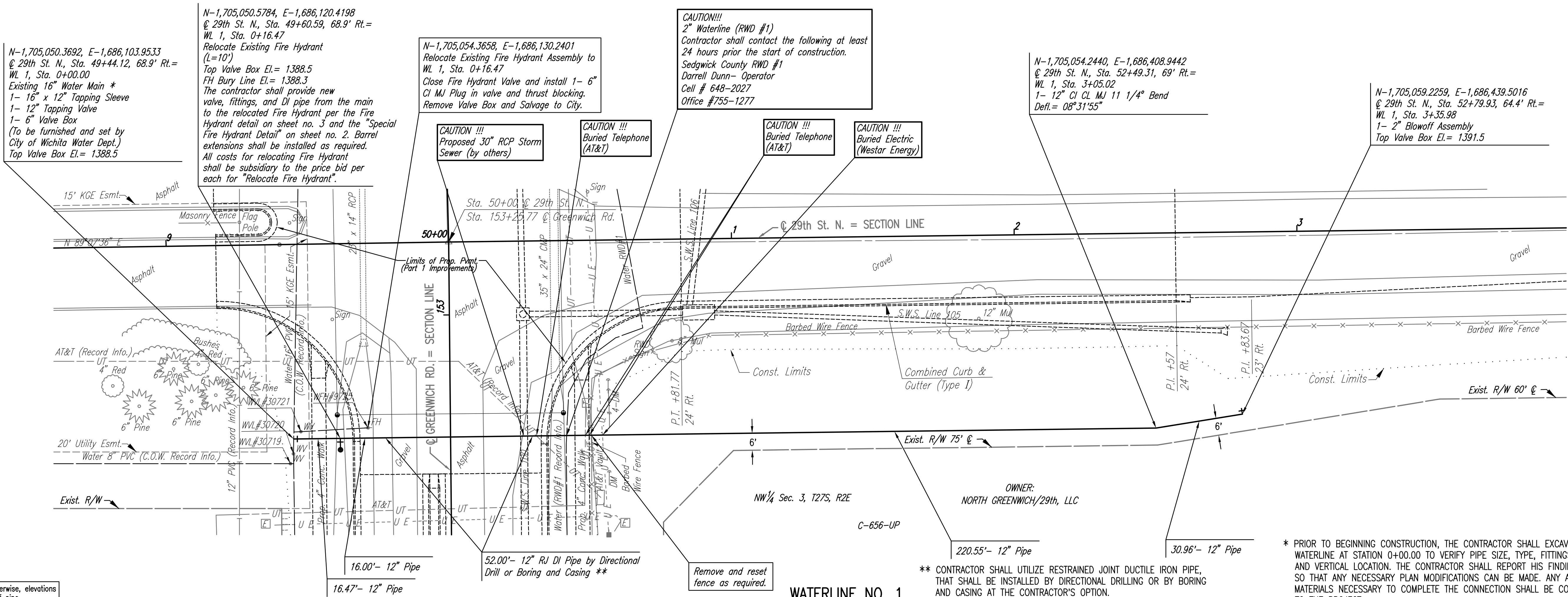
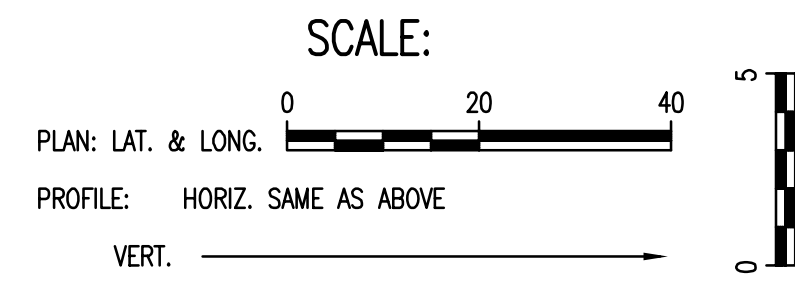


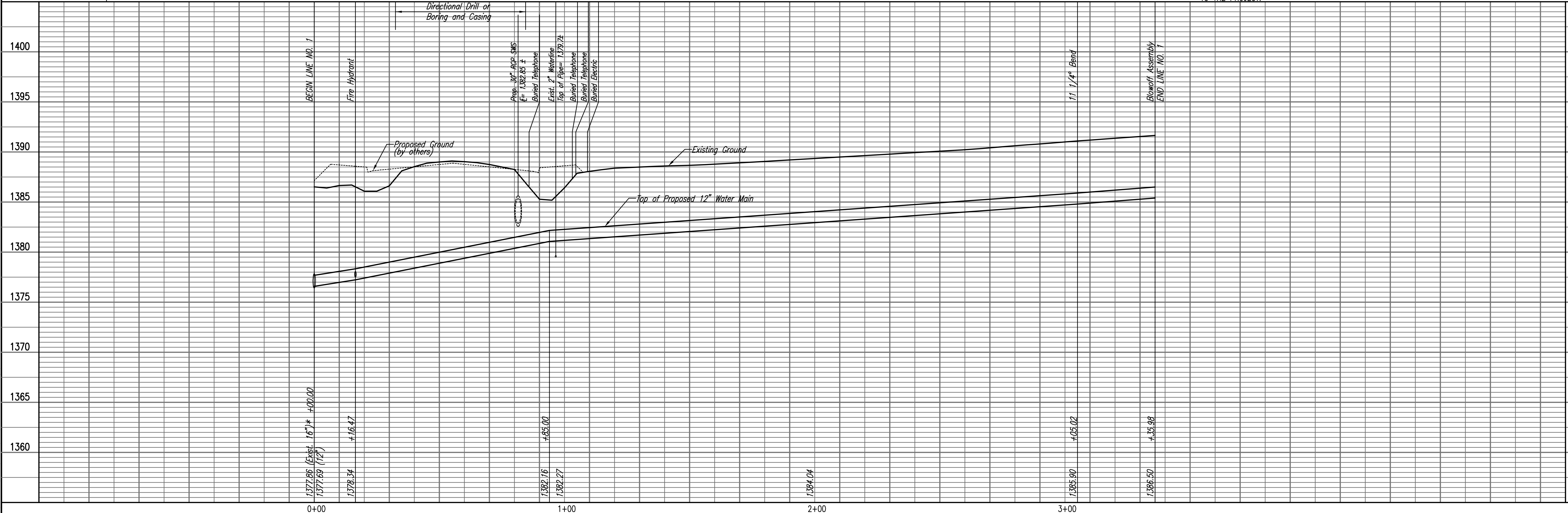
DATE	
BY	
CHECKED	
PLAN	

DATE	
BY	
CHECKED	
PROFILE	



Unless noted otherwise, elevations shown are top of pipe

**WATERLINE NO. 1**



\* PRIOR TO BEGINNING CONSTRUCTION, THE CONTRACTOR SHALL EXCAVATE THE EXISTING 16" WATERLINE AT STATION 0+00.00 TO VERIFY PIPE SIZE, TYPE, FITTINGS, AND HORIZONTAL AND VERTICAL LOCATION. THE CONTRACTOR SHALL REPORT HIS FINDINGS TO THE ENGINEER SO THAT ANY NECESSARY PLAN MODIFICATIONS CAN BE MADE. ANY ADDITIONAL LABOR OR MATERIALS NECESSARY TO COMPLETE THE CONNECTION SHALL BE CONSIDERED SUBSIDIARY TO THE PROJECT.

\*\* CONTRACTOR SHALL UTILIZE RESTRAINED JOINT DUCTILE IRON PIPE, THAT SHALL BE INSTALLED BY DIRECTIONAL DRILLING OR BY BORING AND CASING AT THE CONTRACTOR'S OPTION.

Drawn 08-31-2006 6:33:16 AM by BCL  
 Plot Scale 1:20 08-31-2006 6:58:07 AM by BCL  
 J:\SENTOU\2005\05777\001\2006-08-31 to City DMC\B4-Waterline 01

Professional Engineering Consultants, P.A.  
 303 S. TOPICKA AVENUE, KANSAS CITY, MO 64108  
 316.262.2691 • FAX 316.262.3008

Job No. 35-05777-001  
 Date MAY 2006

Designed By MDK  
 Drawn By CSL, RFT

CITY OF WICHITA, KANSAS  
 JAMES L. ARMOUR, P.E. - CITY ENGINEER  
 12" AND 16" WATER MAIN ALONG 29TH STREET NORTH  
 WATERLINE NO. 1  
 CITY OF WICHITA PROJECT NO. 448-50202

Sheet B4 of 5