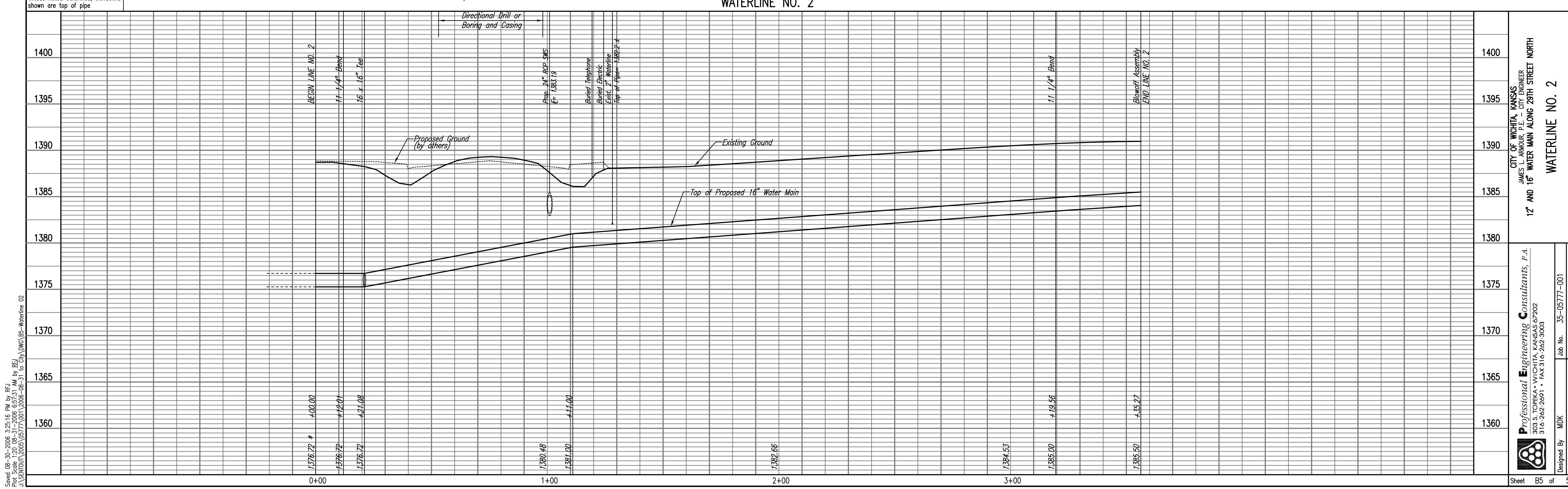
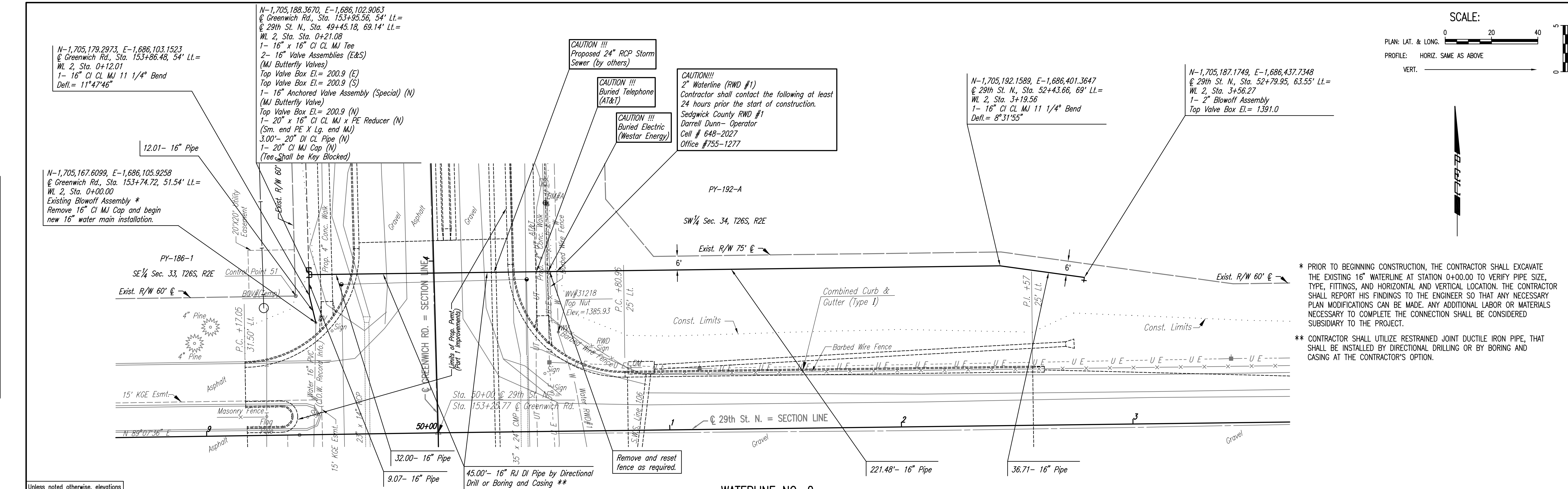
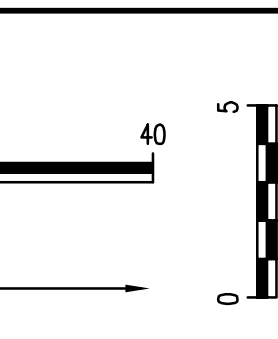


PLAN	CHECKED	DATE
	CHECKED	
BY		

PROFILE	CHECKED	DATE
	CHECKED	
BY		



Printed: 08-30-2006 3:25:16 PM by BCL  
 Plot Scale: 1/2" = 10' - 31-2006 6:57:31 AM by BCL  
 J:\SEN\001\2005\0577\001\2006-08-31 to City DMC\05-Waterline 02



\* PRIOR TO BEGINNING CONSTRUCTION, THE CONTRACTOR SHALL EXCAVATE THE EXISTING 16" WATERLINE AT STATION 0+00.00 TO VERIFY PIPE SIZE, TYPE, FITTINGS, AND HORIZONTAL AND VERTICAL LOCATION. THE CONTRACTOR SHALL REPORT HIS FINDINGS TO THE ENGINEER SO THAT ANY NECESSARY PLAN MODIFICATIONS CAN BE MADE. ANY ADDITIONAL LABOR OR MATERIALS NECESSARY TO COMPLETE THE CONNECTION SHALL BE CONSIDERED SUBSIDIARY TO THE PROJECT.

\*\* CONTRACTOR SHALL UTILIZE RESTRAINED JOINT DUCTILE IRON PIPE, THAT SHALL BE INSTALLED BY DIRECTIONAL DRILLING OR BY BORING AND CASING AT THE CONTRACTOR'S OPTION.

CITY OF WICHITA, KANSAS  
 JAMES L. ARMOUR, P.E. - CITY ENGINEER  
**12" AND 16" WATER MAIN ALONG 29TH STREET NORTH**  
**WATERLINE NO. 2**  
 CITY OF WICHITA PROJECT NO. 448-50202

Professional Engineering Consultants, P.A.  
 803 S. TOPICKA AVENUE, WICHITA, KANSAS 67202  
 316-262-2691 • FAX 316-262-3008

Designed By: MDK  
 Drawn By: CSL, RFT  
 Job No.: 35-05777-001  
 Date: MAY 2006

Sheet B5 of 5