

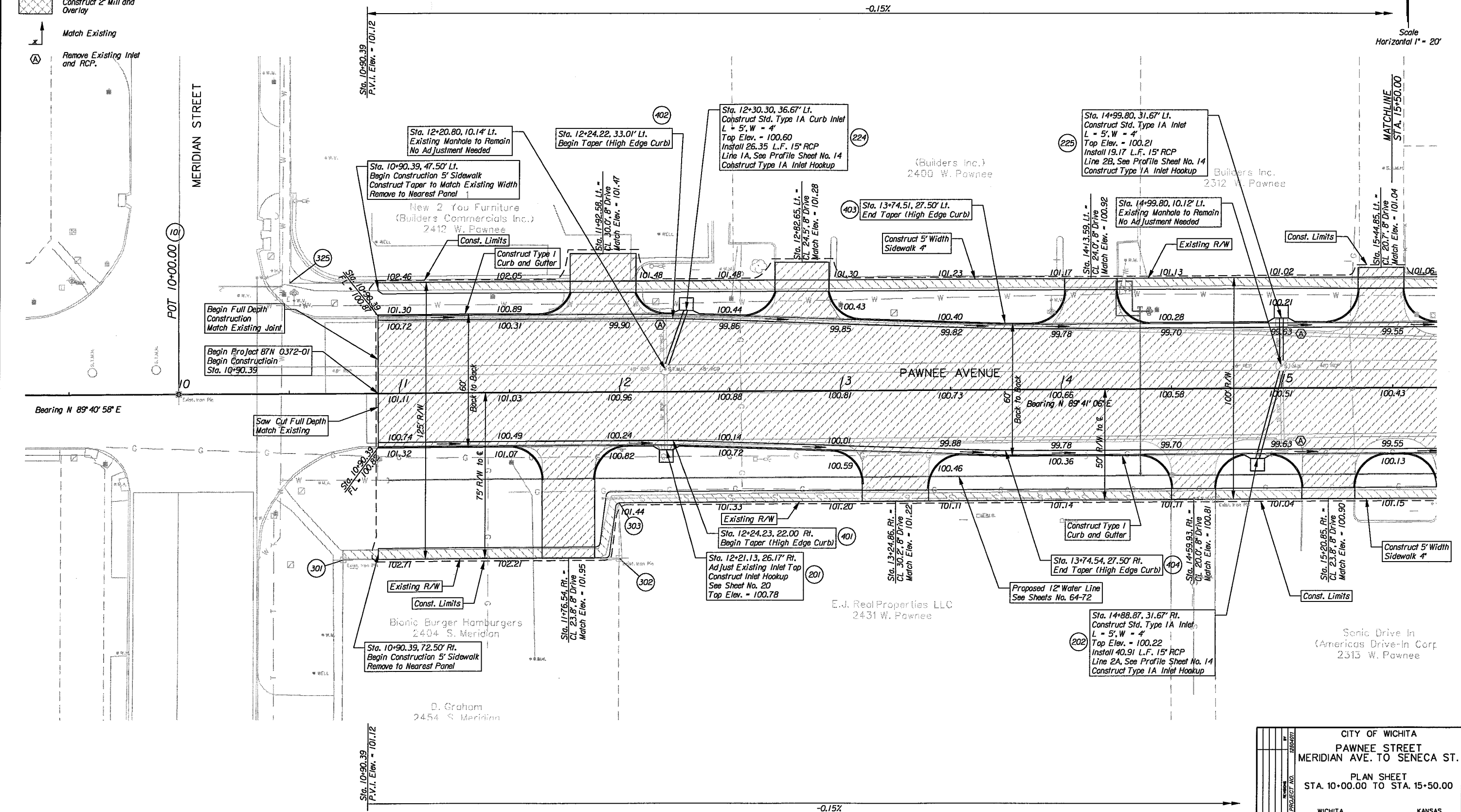
Legend

- Sidewalk Removal
- Full Depth Pavement Removal and Widening
- Construct 2' Mill and Overlay

Match Existing
Remove Existing Inlet and RCP.

Bench Mark - City of Wichita NW Corner of Intersection,
Traffic Signal Light Base,
NW of Section Corner Iron
SSW of Center of Traffic Signal MH
SW of Center of Curb Inlet
Elev. = 102.43

Scale
Horizontal 1" = 20'



9:\w04\0011\road\pp01.sht
 9/11/2006 1:41:54 PM

CITY OF WICHITA	
PAWNEE STREET MERIDIAN AVE. TO SENECA ST.	
PLAN SHEET STA. 10+00.00 TO STA. 15+50.00	
WICHITA	KANSAS
DESIGNED J.R.L.	DRAWN D.A.N.
CHECKED B.A.L.	DATE 9/11/2006
SCALE 1"=20'	SHEET NO. 5

PROJECT NO. 1894011
 245 North Waco, Suite 420
 Wichita, Kansas 67202