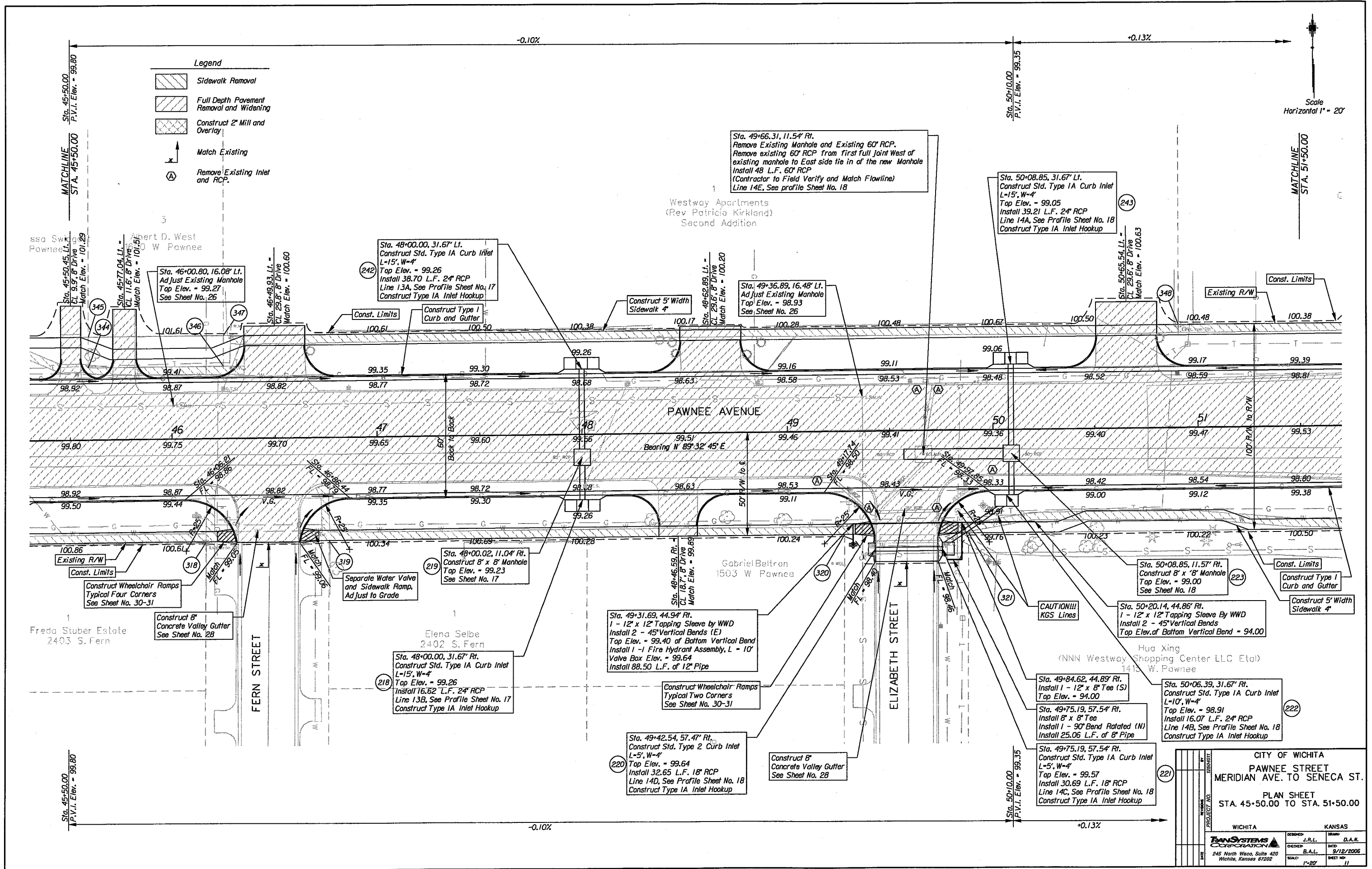


9:\WID\A\0011\Road\p07.sht  
9/12/2006 2:22:51 PM



**Legend**

- Sidewalk Removal
- Full Depth Pavement Removal and Widening
- Construct 2" Mill and Overlay
- Match Existing
- Remove Existing Inlet and RCP.

CITY OF WICHITA  
PAWNEE STREET  
MERIDIAN AVE. TO SENECA ST.  
PLAN SHEET  
STA. 45+50.00 TO STA. 51+50.00

|             |           |           |
|-------------|-----------|-----------|
| PROJECT NO. | DESIGNED  | DRAWN     |
| DATE        | DESIGNED  | DRAWN     |
| SCALE       | DATE      | SHEET NO. |
| 1"=20'      | 9/12/2006 | 11        |

WICHITA KANSAS  
TRANSYSTEMS CORPORATION  
245 North Waco, Suite 420  
Wichita, Kansas 67202

Scale  
Horizontal 1" = 20'

MATCHLINE  
STA. 51+50.00

MATCHLINE  
STA. 45+50.00

Sta. 45+50.00  
P.V.I. Elev. = 99.80

Sta. 50+10.00  
P.V.I. Elev. = 99.35

-0.10%

+0.13%

-0.10%

+0.13%