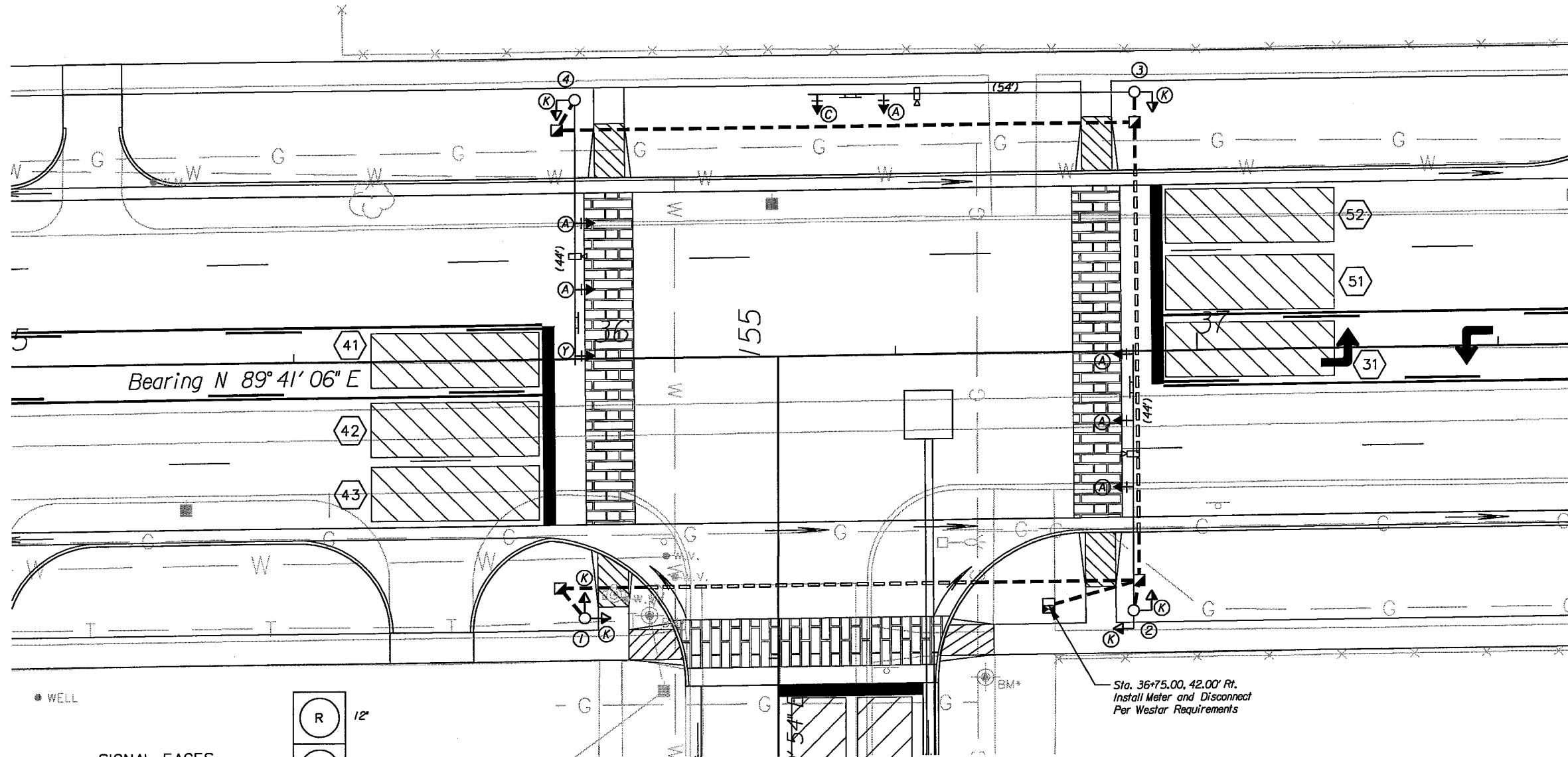


POLE NO.	STATION	OFFSET
1	35+98.00	43.0' Rt.
2	36+89.00	43.0' Rt.
3	36+90.00	43.0' Lt.
4	35+97.00	43.0' Lt.
CONTROLLER	36+75.00	42.0' Rt.

BOX NO.	STATION	OFFSET
1	35+94.00	38.00' Rt.
2	36+90.00	38.00' Rt.
3	36+90.00	38.00' Lt.
4	35+94.00	38.00' Lt.

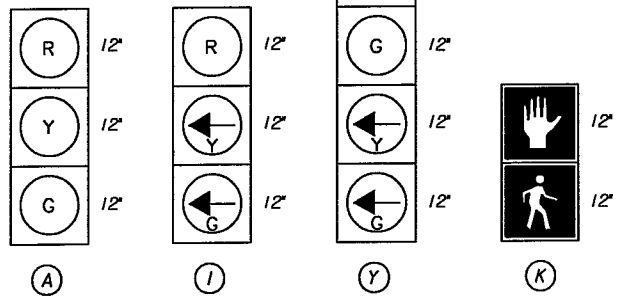


- LEGEND**
- METAL TRAFFIC SIGNAL POLE
  - ⊙ METAL TRAFFIC SIGNAL PEDESTAL
  - PEDESTRIAN SIGNAL INDICATION
  - TRAFFIC SIGNAL INDICATION
  - ⊕ TRAFFIC SIGNAL WITH BACKPLATE
  - (8') ↓ MAST ARM SUSPENDED TRAFFIC SIGNAL
  - ▣ 24" SERVICE BOX
  - ⊙ 18" SERVICE BOX
  - ⊙ JUNCTION BOX
  - CONDUIT (TRENCHED)
  - === CONDUIT (BORED)
  - ⊠ CONTROLLER AND CABINET (POLE MOUNTED)
  - ⊠ EXISTING CONTROLLER AND CABINET
  - ⊙ SECONDARY SERVICE POINT
  - ⊙ DETECTOR NUMBER
  - ▭ VEHICLE DETECTOR LOOP
  - ⊙ LUMINAIRE
  - P.B. PEDESTRIAN PUSH BUTTON
  - ⊙ POLE NUMBER
  - SIGN

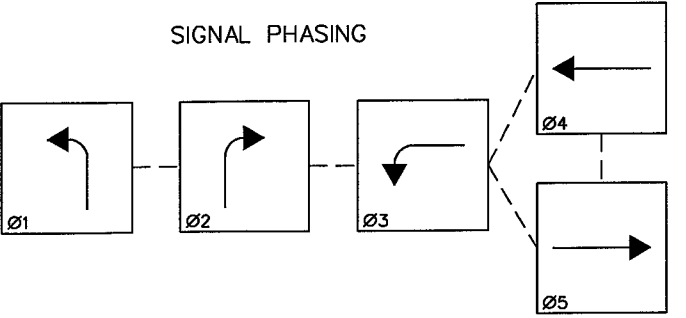


Sta. 36+75.00, 42.00' Rt.  
Install Meter and Disconnect  
Per Westar Requirements

**SIGNAL FACES**



**SIGNAL PHASING**



C:\w04\0011\road\sig01.sht  
 9/11/2006 1:42:25 PM

CITY OF WICHITA		KANSAS	
PAWNEE STREET MERIDIAN AVE. TO SENECA ST.			
PEDESTRIAN CROSSINGS STA. 36+02.37 & STA. 36+38.30			
DATE	DESIGNED	CHECKED	DRAWN
9/11/2006	J.R.L.	B.A.L.	D.A.H.
SCALE	1"=20'		SHEET NO.
			57