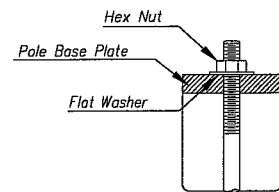
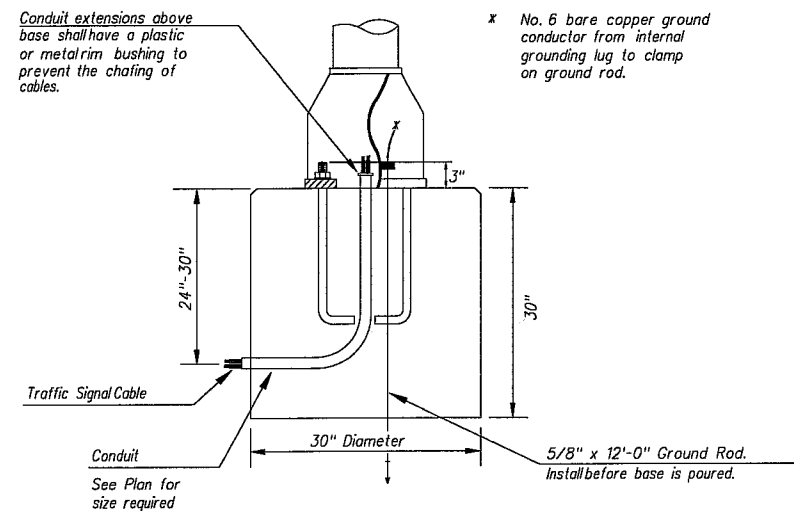
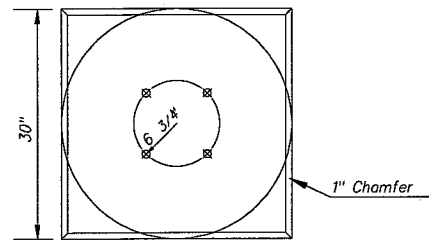


Use Keystone "No-Weld Number 1 Anti-Seize Compound" on all bolts & nuts.

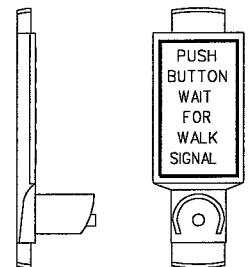


ANCHOR BOLT  
DETAIL



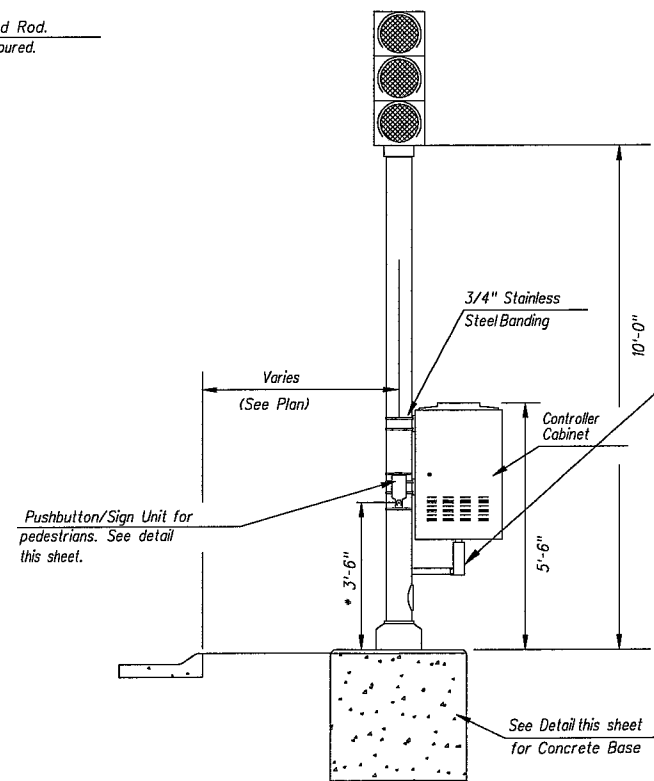
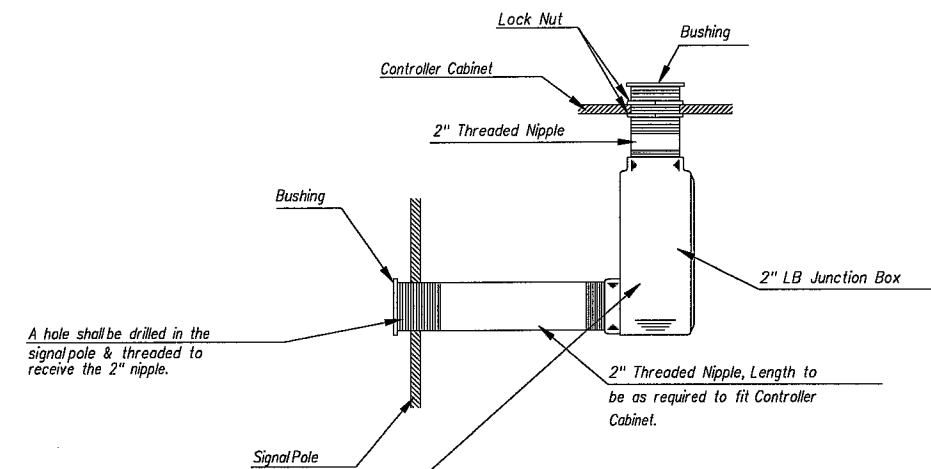
CONCRETE BASE DETAIL

\* NOTE: MESSAGE TO BE CAST WITH HOUSING (ONE PIECE)



INSTALL PEDESTRIAN PUSHBUTTON UNDERNEATH CORRESPONDING PEDESTRIAN SIGNAL HEAD ON SIDE OF POLE NEAREST CROSSWALK. UNIT SHALL BE FIRMLY ATTACHED TO THE SIDE OF POLE WITH 3/4" STEEL BANDS. SHARP ENDS SHALL BE FOLDED UNDER TO PREVENT INJURY TO PEDESTRIANS.

PEDESTRIAN PUSHBUTTON/SIGN  
UNIT DETAIL



TRAFFIC SIGNAL PEDESTAL

\* From Sidewalk Finish Grade to Center of Pushbutton.

PROJECT DESCRIPTION		
TRAFFIC SIGNAL PEDESTAL & CONCRETE BASE DETAIL SHEET		
PROJECT NUMBER 472-84356		
DRAWN BY: I.M.	SCALE NO SCALE	REVIEW BY:
DATE: MAY 97	CITY OF WICHITA DEPARTMENT OF PUBLIC WORKS	DATE:
ENGINEER DIVISION SCOTT LOGAN, TRAFFIC ENGINEER		60