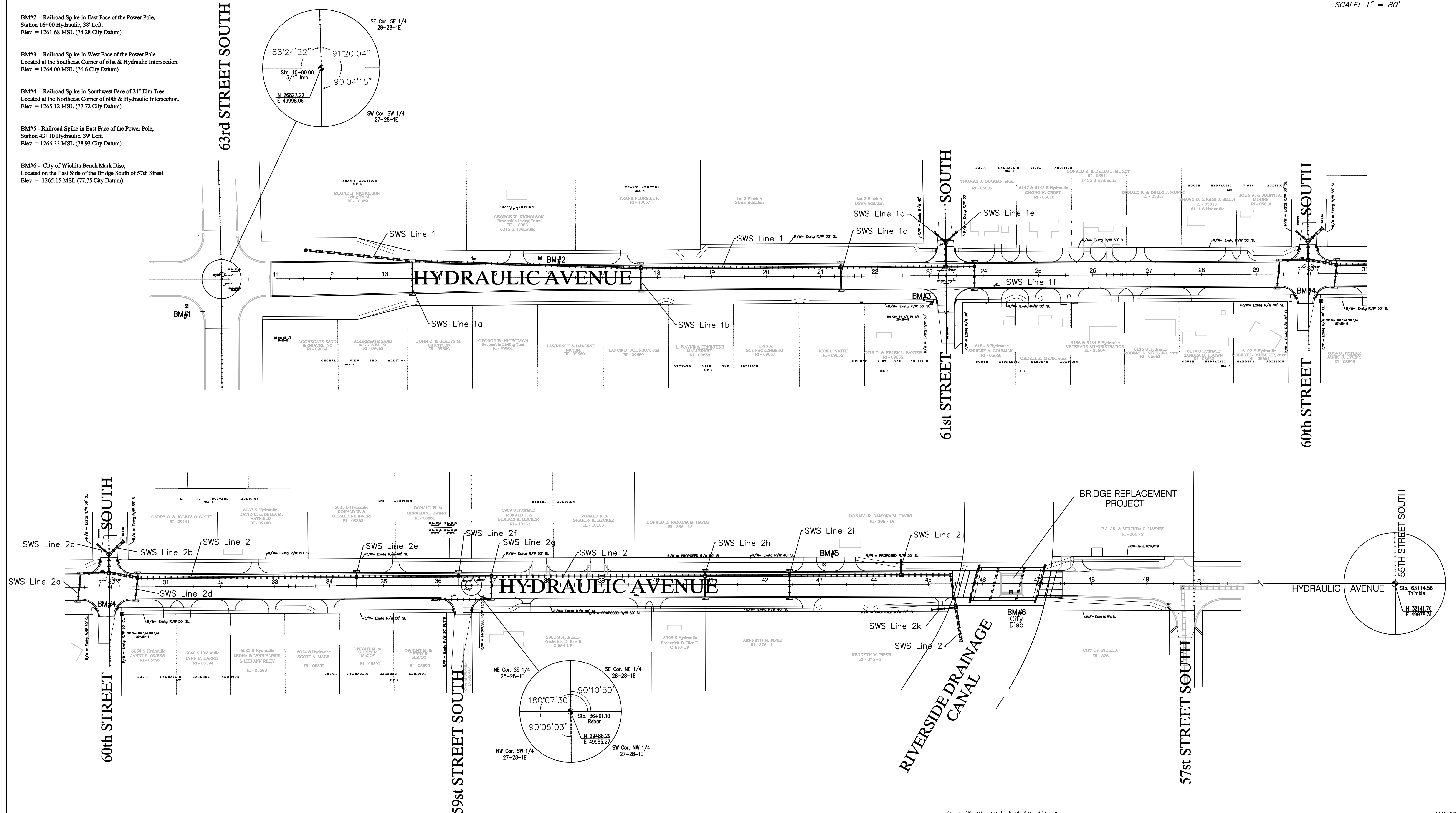
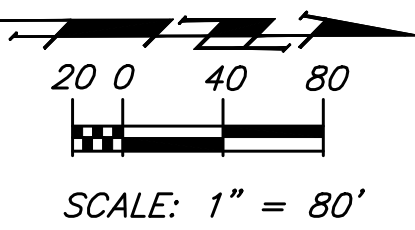


BENCHMARKS

- BM#1 - City of Wichita Bench Mark Disc, Located at the Southeast Corner of 63rd & Hydraulic Intersection.
Elev. = 1261.06 MSL (73.66 City Datum)
- BM#2 - Railroad Spike in East Face of the Power Pole, Station 16+00 Hydraulic, 38' Left.
Elev. = 1261.68 MSL (74.28 City Datum)
- BM#3 - Railroad Spike in West Face of the Power Pole Located at the Southeast Corner of 61st & Hydraulic Intersection.
Elev. = 1264.00 MSL (76.6 City Datum)
- BM#4 - Railroad Spike in Southwest Face of 24" Elm Tree Located at the Northeast Corner of 60th & Hydraulic Intersection.
Elev. = 1265.12 MSL (77.72 City Datum)
- BM#5 - Railroad Spike in East Face of the Power Pole, Station 43+10 Hydraulic, 39' Left.
Elev. = 1266.33 MSL (78.93 City Datum)
- BM#6 - City of Wichita Bench Mark Disc, Located on the East Side of the Bridge South of 57th Street.
Elev. = 1265.15 MSL (77.75 City Datum)



Drawing File: F:\eng\Hydraulic Pha3\Details\Key Sheet
 Project No. 99-05452 CAPITAL IMPROVEMENT PROJECT
HYDRAULIC AVENUE PAVING KEY SHEET
 HYDRAULIC AVENUE PAVING 63RD STREET SOUTH TO THE RIVERSIDE DRAINAGE CANAL

	Baughman Company, P.A. 315 Ella St. Wichita, KS 67211 P 316-262-7271 F 316-262-0149	SEPT. 2005 SHEET 2 OF 79
	ENGINEERING SURVEYING PLANNING LANDSCAPE ARCHITECTURE	