

STATE	PROJECT NO.	YEAR	SHEET NO.	TOTAL SHEETS
KANSAS	472-84118	2005	38	79

GENERAL NOTES

ABUTMENT STRIP DRAIN: The Bridge Contractor shall excavate to the limits shown on the Bridge Excavation sheet, grade the bottom of the backfill area, place the strip drain, and place the perforated pipe, the outlet pipe, the CMP, and the backfill. Guide post and coarse aggregate are subsidiary to this bid item. Guide post and coarse aggregate are not required if the CMP empties onto riprap.

BRIDGE BACKWALL PROTECTION SYSTEM: Apply a Bridge Backwall Protective System to the approach side of the abutments and the wings in accordance with KDOT Specifications and the manufacturer's recommendations. Cover the abutments and wings to the limits shown on the details. Prior to backfilling, repair any damage done to the system at no charge to the state.

Place perforated pipe next to the strip drain. Use non-perforated pipe outside the limits of the strip drain. Enclose the perforated pipe with the extension of the filter fabric.

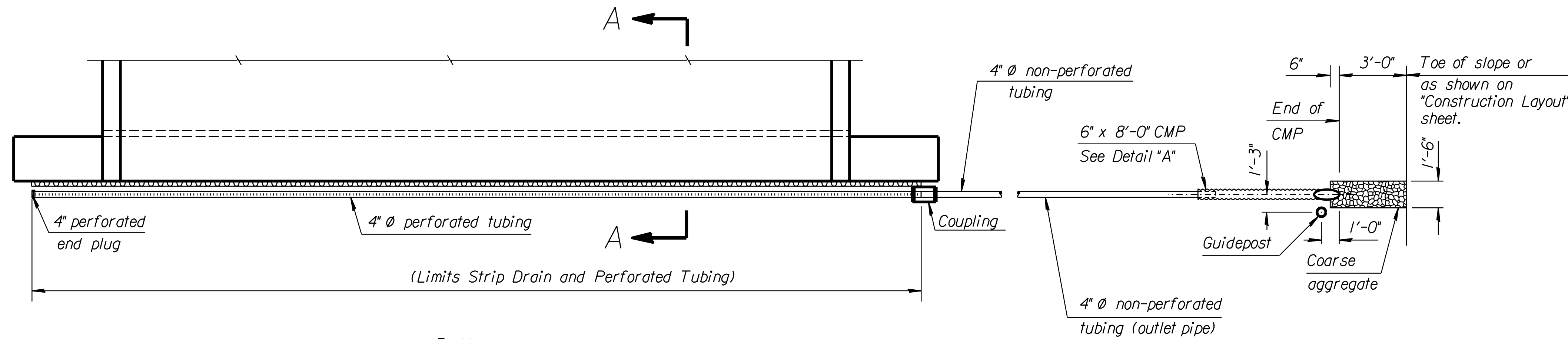
Compact the abutment backfill. See the KDOT Specifications.

Perforated pipe and non-perforated outlet pipe shall be corrugated polyethylene tubing conforming to the KDOT Specifications.

Fit the CMP end section with 1/4" galvanized mesh screen to prevent the entrance of rodents. Seal the joint between the outlet pipe and the end section with a joint sealer. Place coarse aggregate at the outlet end as shown.

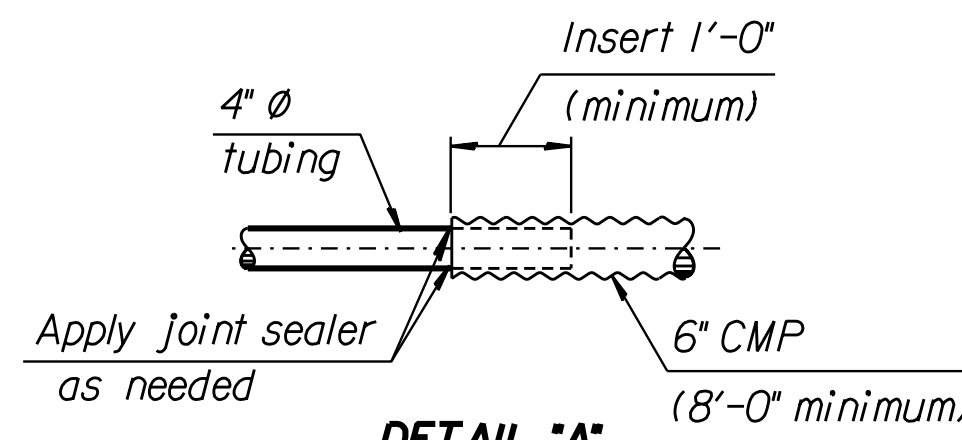
Grade the bottom surface of the excavated area to drain. Backfill this area with a cohesive type soil. The soil should be a silty clay or clay under the Kansas Classification System with a minimum plasticity index of 13. Compact the material to Type C standards.

Place the outlet pipe on the downstream side of structures over streams and as shown or noted on other crossings (See the "Construction Layout" sheet).

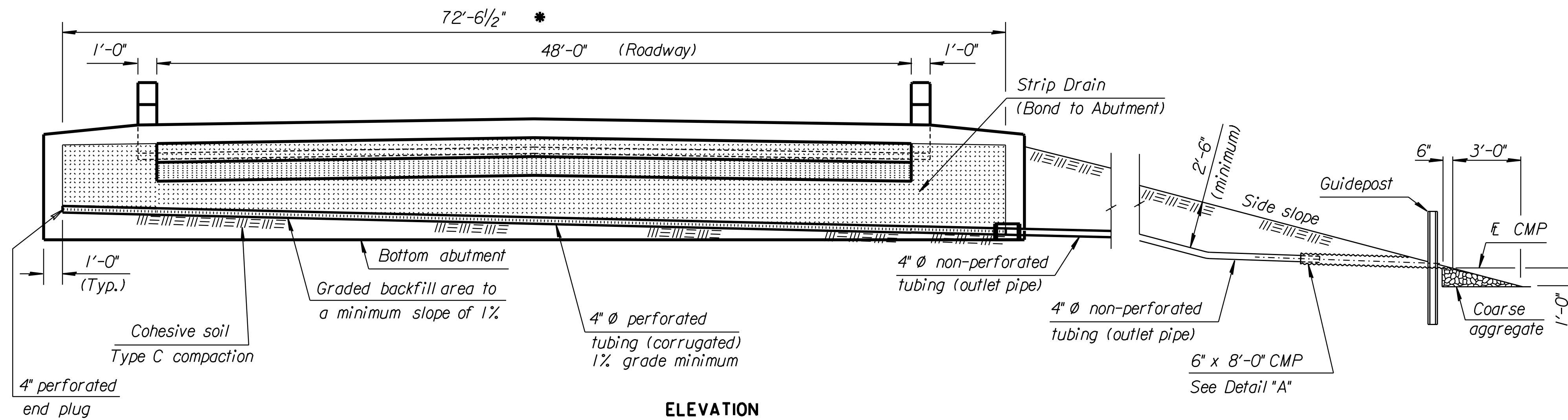


PLAN

Note: The 1'-0" lap and joint sealer may be replaced by a reducing coupler at the junction of the CMP and the 4" round tubing.

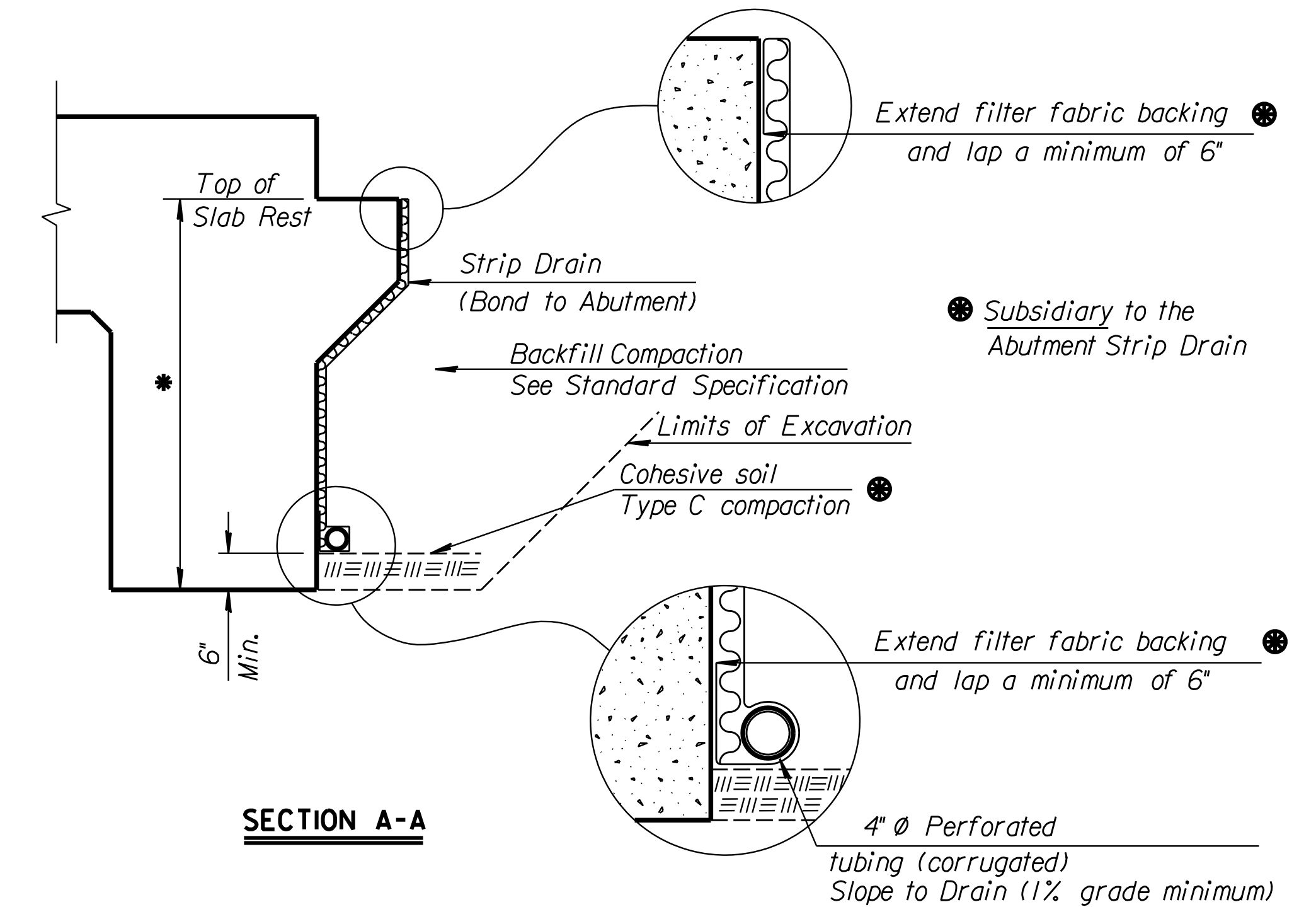


DETAIL "A"



ELEVATION

Note: Place the CMP flowline 1'-0" above ditch flowline, toe of sideslope, or as shown on the Construction Layout.



SECTION A-A

* Limits of Bridge Backwall Protection System (by Bridge Contractor)

Std. Base File: br104a.dgn
 Plotted By: ras
 File: z:\1999\99164\officecheck\99164.C-Br104a.dgn
 Plot Date: 9-8-2005

SUMMARY OF QUANTITIES	
Abutment Strip Drain	60 Sq. Yds.
Bridge Backwall Protection System	74 Sq. Yds.
Items Subsidiary to Strip Drain	
4" Perforated Pipe	145 Lin. Ft.
4" Outlet Pipe	26 Lin. Ft.
6" CMP	16 Lin. Ft.
Guide Post	0

3				
2				
1	4-01-04	Current release		
NO.	DATE	REVISIONS	BY	APP'D
KANSAS DEPARTMENT OF TRANSPORTATION				
Br. No. 5304008700LBS05 Sta. 46+45.00				
ABUTMENT STRIP DRAIN				
Proj. No. 472-84118			Sedgwick Co.	
SHEET NO.	OF	DATE	APP'D	
DESIGNED	BY	DATE	JK	QUANTITIES
DESIGN CK.	DETAIL CK.	LRR	QUAN. CK.	CADD CK.