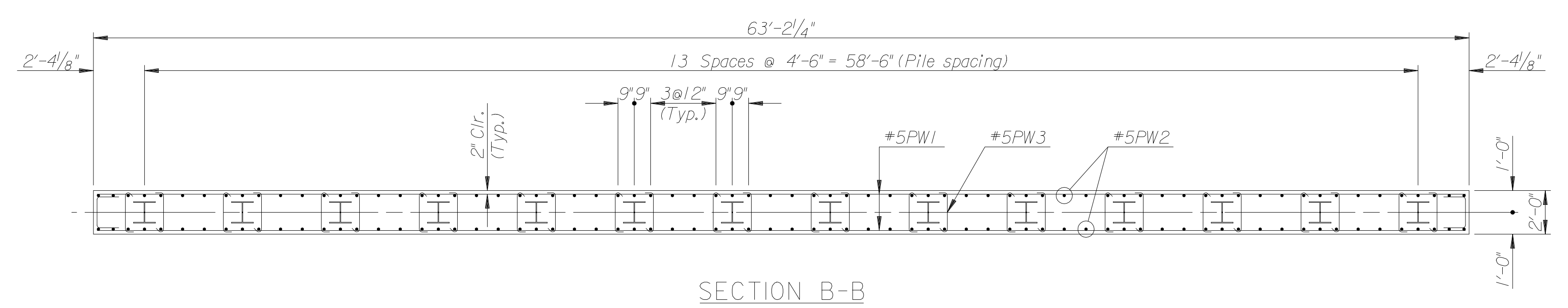
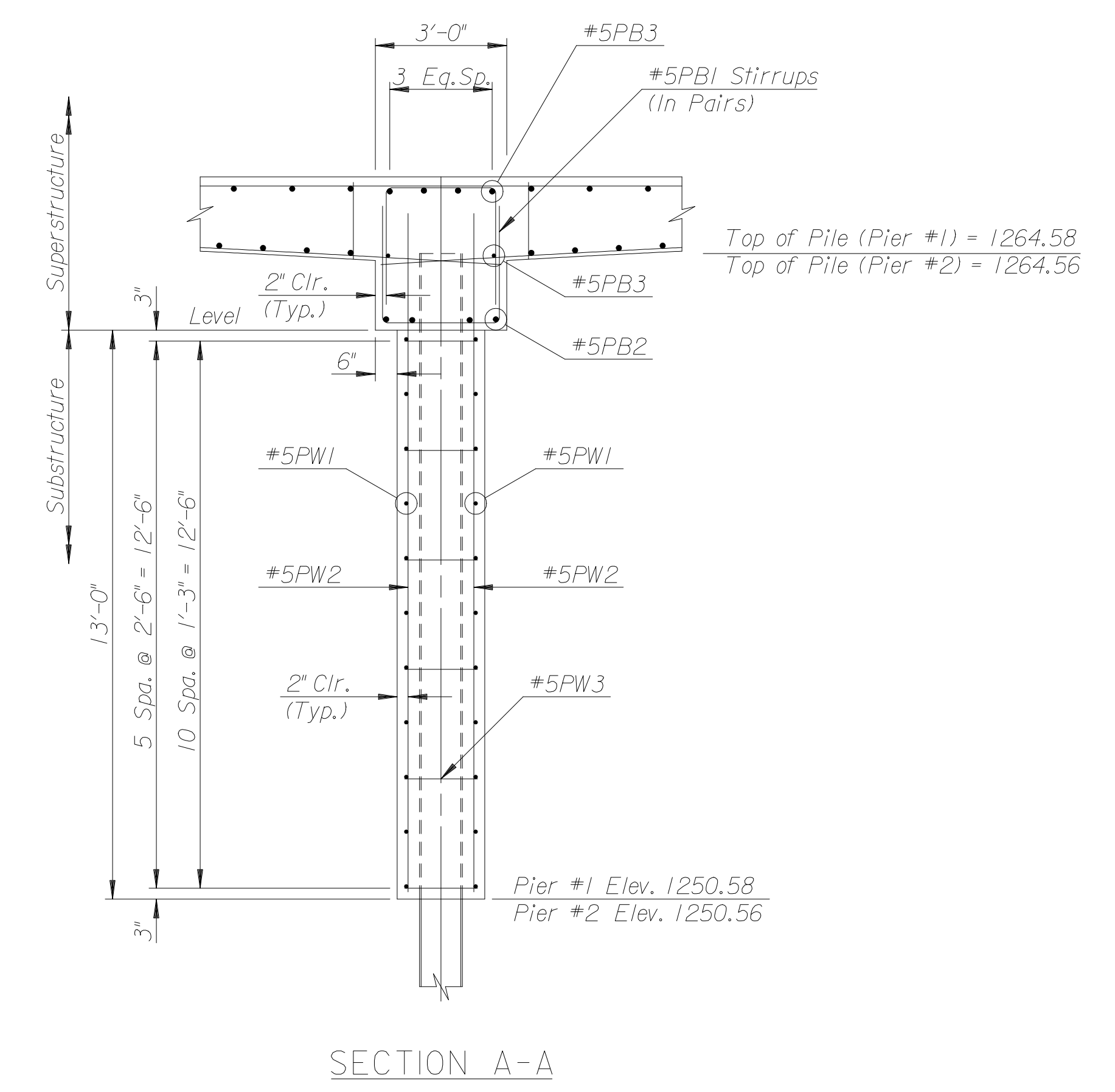
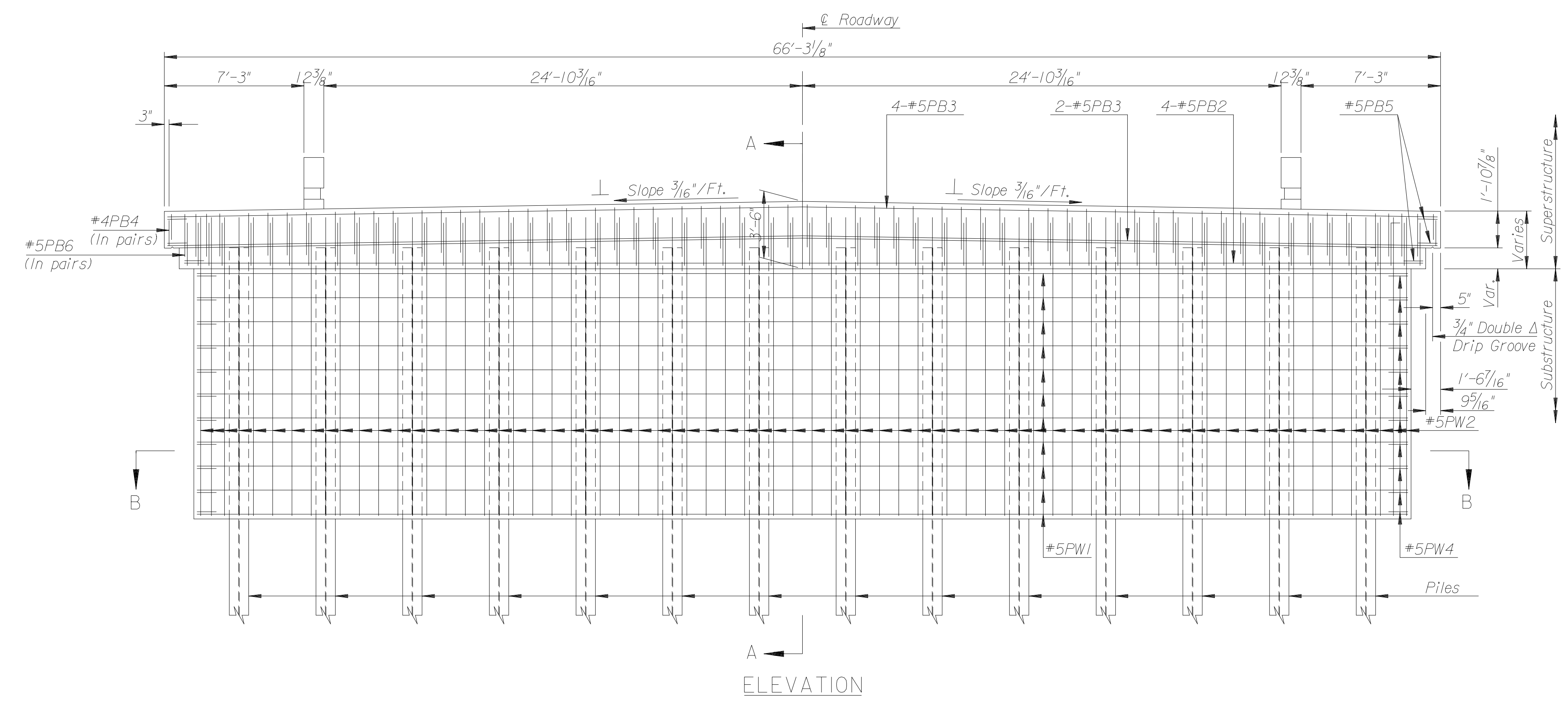
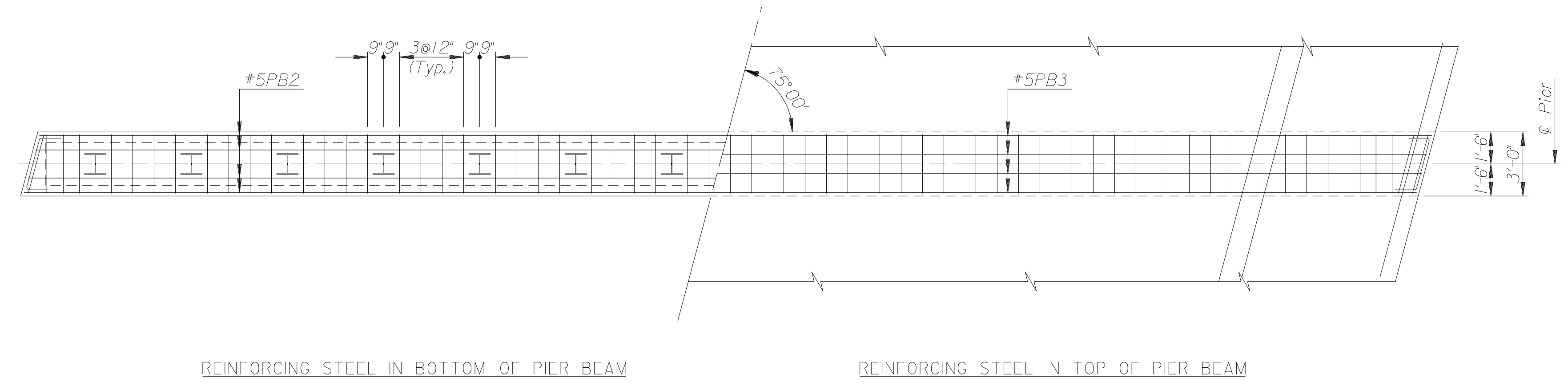


PROJECT NO.	YEAR	SHEET NO.	TOTAL SHEETS
472-84118	2005	39	79



Drawn by : will  
 Plotted by : ras 9-9-2005  
 I:/1999/99764/01/teck/99764\_C-Pier(E/P/W/B).dgn

1			
No.	Revisions	By	Date
CITY OF WICHITA			
STRUCTURE NO. 5304008700LBS05		STA. 46+45.00	
PIER DETAILS			
PROJECT NO. 472-84118		SEDGWICK COUNTY	
<b>Professional Engineering Consultants, P.A.</b> <small>303 S. TOPEKA • WICHITA, KANSAS 67202          316-262-2691 • FAX 316-262-3003</small>			
Designed by	M.S.N.	Checked by	R.A.S.
Drawn by	W.L.L.	Date	July 2005
		Job No.	99764