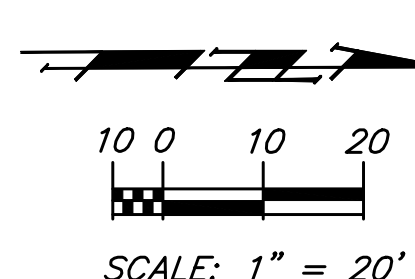
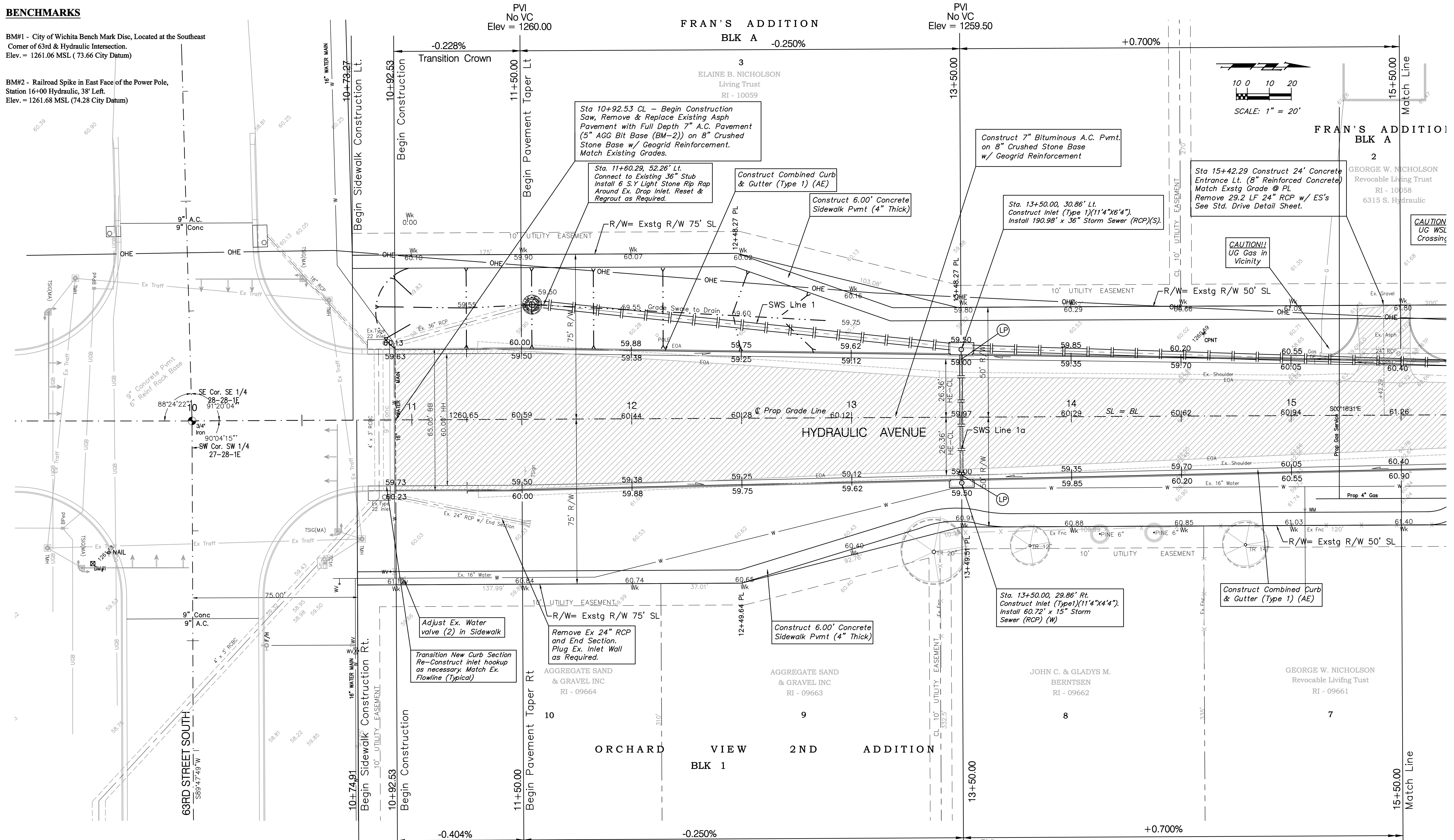


**BENCHMARKS**

BM#1 - City of Wichita Bench Mark Disc, Located at the Southeast Corner of 63rd & Hydraulic Intersection. Elev. = 1261.06 MSL ( 73.66 City Datum)

BM#2 - Railroad Spike in East Face of the Power Pole, Station 16+00 Hydraulic, 38' Left. Elev. = 1261.68 MSL (74.28 City Datum)



**Note:** Trees/Shrubs to be removed are marked thus:

**Note:** Pavement, Sidewalks, and Etc. To Be Removed Are Indicated By:

PVI No VC Elev = 1259.50  
 Drawing File: F:\eng\Hydraulic Pha3\Land\dwg\Basemap.dwg [Pw01]  
 Design: STAFF  
 Drawn: STAFF  
 Approved: JFB  
 Scale: NOTED

Project No. 99-09-E452 CAPITAL IMPROVEMENT PROJECT  
**HYDRAULIC AVENUE PAVING**  
 Sta. 10+92.53 to Sta. 15+50.00  
 HYDRAULIC AVENUE PAVING&3RD STREET SOUTH TO THE RIVERSIDE DRAINAGE CANAL