

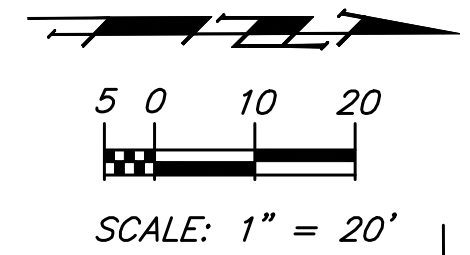
BENCHMARKS

BM#3 - Railroad Spike in West Face of the Power Pole
Located at the Southeast Corner of 61st & Hydraulic Intersection.
Elev. = 1264.00 MSL (76.6 City Datum)

SOUTH HYDRAULIC VISTA ADDITION

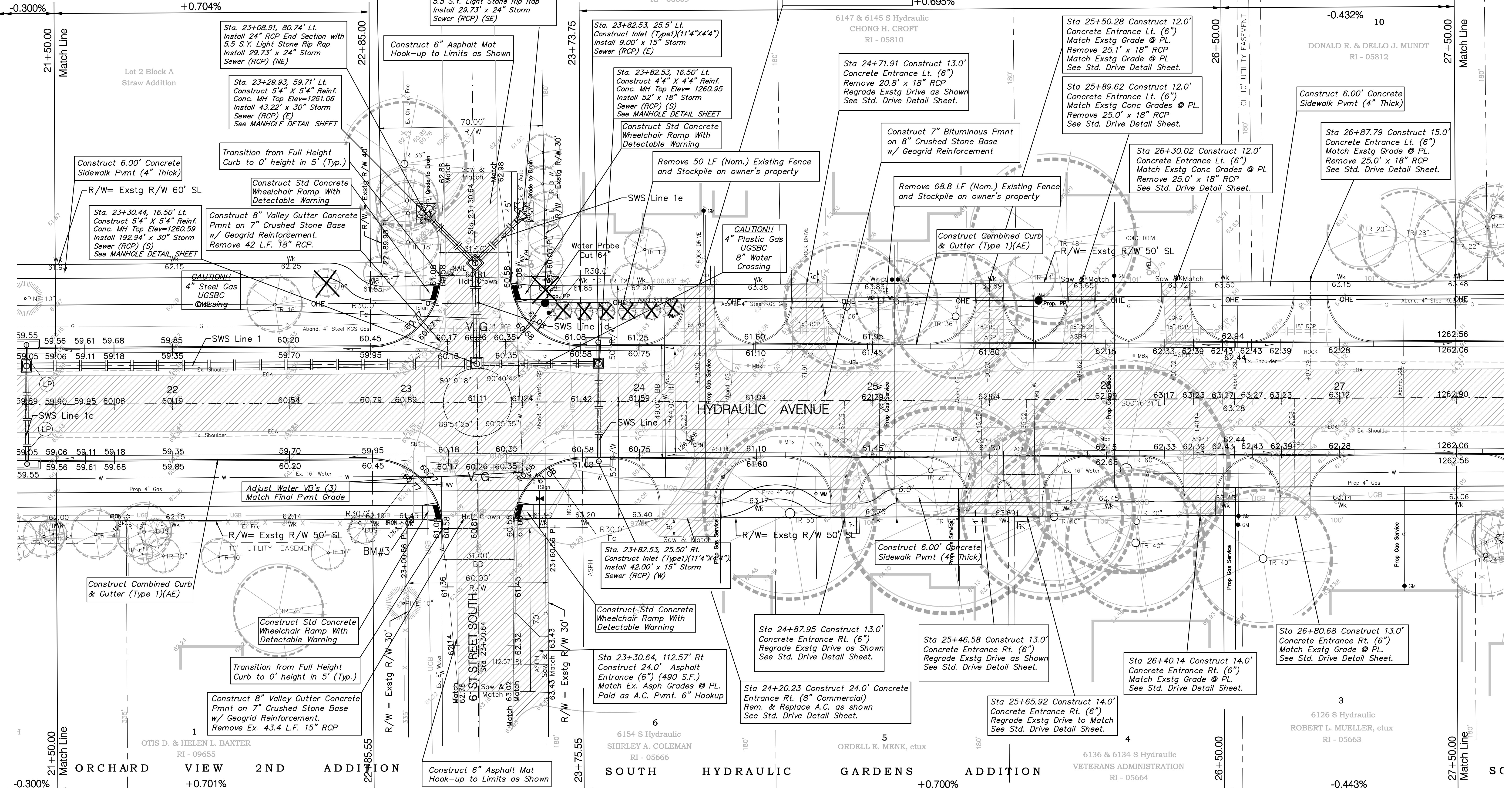
9

DONALD R. & DELLO J. MUNDT
RI - 05811
6135 S Hydraulic



PVI
50' VC
Elev = 1259.50

PVI
50' VC
Elev = 1263.00



Note:
Trees/Shrubs to be removed are marked thus:

Note:
Pavement, Sidewalks, and Etc. To Be Removed Are Indicated By:

Drawing File: F:\eng\Hydraulic Pha3\Land\dwg\Bsemap.dwg [Pw03]
Design: JFB
Drawn: STAFF
Approved: JFB
Scale: NOTED
Project No. 99-09-452 CAPITAL IMPROVEMENT PROJECT
HYDRAULIC AVENUE PAVING
Sta. 21+50.00 to Sta. 27+50.00
HYDRAULIC AVENUE PAVING 63RD STREET SOUTH TO THE RIVERSIDE DRAINAGE CANAL

Baughman Company, P.A.
315 Ellis St. Wichita, KS 67211 P 316-262-7271 F 316-262-0149
ENGINEERING | SURVEYING | PLANNING | LANDSCAPE ARCHITECTURE
SHEET 13 OF 79