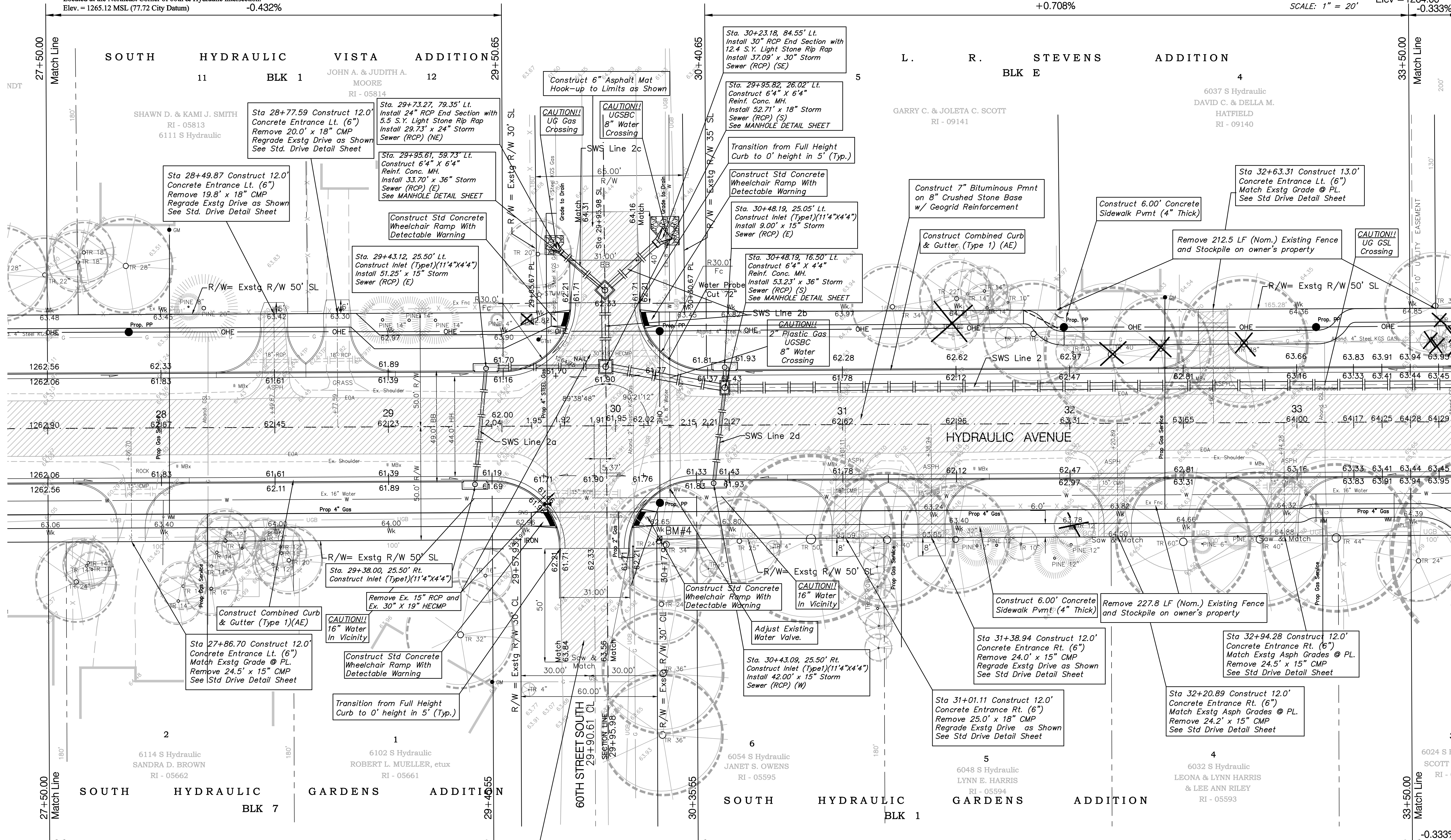
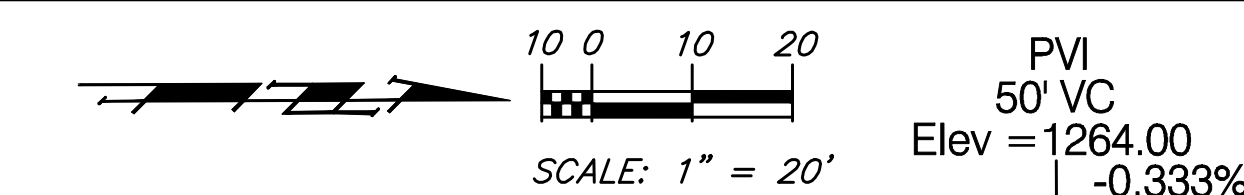


BENCHMARKS

BM#4 - Railroad Spike in Southwest Face of 24" Elm Tree
Located at the Northeast Corner of 60th & Hydraulic Intersection.
Elev. = 1265.12 MSL (77.72 City Datum) -0.432%



Note:
Trees/Shrubs to be removed are marked thus:

Note:
Pavement, Sidewalks, and Etc. To Be Removed Are Indicated By:

Drawing File: F:\eng\Hydraulic Pha3\Land\dwg\Basemap.dwg [Pw04]
Project No. 99-09-E452 CAPITAL IMPROVEMENT PROJECT
HYDRAULIC AVENUE PAVING
Sta. 27+50.00 to Sta. 33+50.00
HYDRAULIC AVENUE PAVING&3RD STREET SOUTH TO THE RIVERSIDE DRAINAGE CANAL

Baughman Company, P.A.
315 Ellis St. Wichita, KS 67211 P 316-262-7271 F 316-262-0149
ENGINEERING | SURVEYING | PLANNING | LANDSCAPE ARCHITECTURE