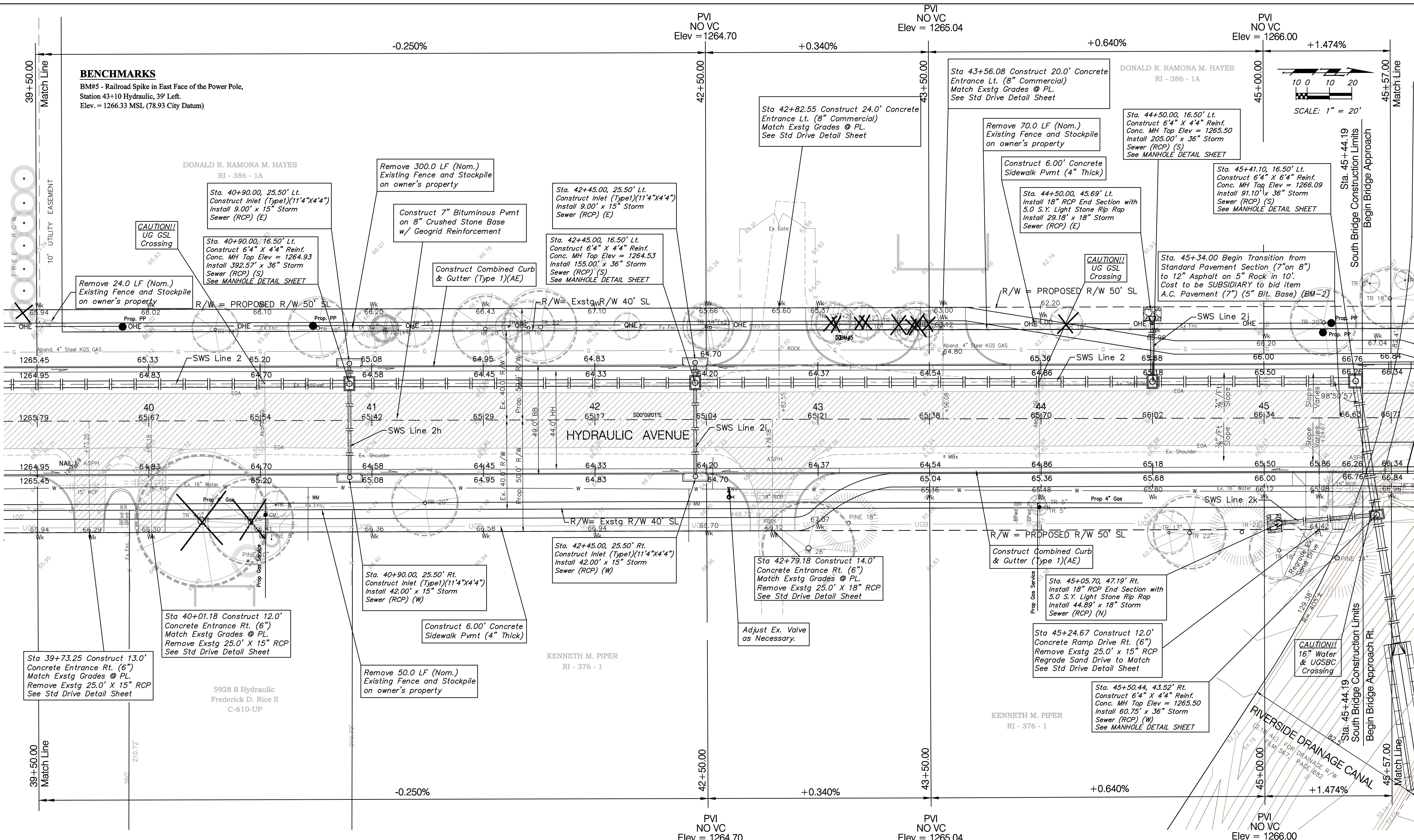
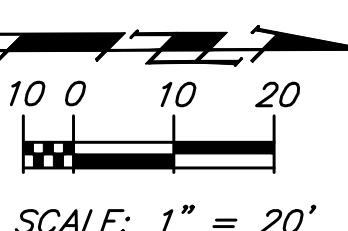


BENCHMARKS

BM#5 - Railroad Spike in East Face of the Power Pole,
Station 43+10 Hydraulic, 39' Left.
Elev. = 1266.33 MSL (78.93 City Datum)



Sta 39+73.25 Construct 13.0' Concrete Entrance Rt. (6") Match Exstg Grades @ PL. Remove Exstg 25.0' X 15" RCP See Std Drive Detail Sheet

Sta 40+01.18 Construct 12.0' Concrete Entrance Rt. (6") Match Exstg Grades @ PL. Remove Exstg 25.0' X 15" RCP See Std Drive Detail Sheet

Sta 40+90.00, 25.50' Rt. Construct Inlet (Type1)(11'4"x4'4") Install 42.00' x 15" Storm Sewer (RCP) (W)

Sta. 42+45.00, 25.50' Rt. Construct Inlet (Type1)(11'4"x4'4") Install 42.00' x 15" Storm Sewer (RCP) (W)

Sta 42+79.18 Construct 14.0' Concrete Entrance Rt. (6") Match Exstg Grades @ PL. Remove Exstg 25.0' X 18" RCP See Std Drive Detail Sheet

Sta 45+05.70, 47.19' Rt. Install 18" RCP End Section with 5.0 S.Y. Light Stone Rip Rap Install 44.89' x 18" Storm Sewer (RCP) (N)

Sta. 45+50.44, 43.52' Rt. Construct 6'4" X 4'4" Reinf. Conc. MH Top Elev = 1265.50 Install 60.75' x 36" Storm Sewer (RCP) (W) See MANHOLE DETAIL SHEET

Note:
Trees/Shrubs to be removed are marked thus:

Note:
Pavement, Sidewalks, and Etc. To Be Removed Are Indicated By:

Drawing File: F:\eng\Hydraulic Pha3\Land\dwg\Basemap.dwg (Pav06)
Design: JFB
Drawn: STAFF
Approved: JFB
Scale: NOTED
Project No. 99-09-E452 CAPITAL IMPROVEMENT PROJECT
HYDRAULIC AVENUE PAVING
Sta. 39+50.00 to Sta. 45+57.00
HYDRAULIC AVENUE PAVING&8RD STREET SOUTH TO THE RIVERSIDE DRAINAGE CANAL

Baughman Company, P.A.
315 Ellis St. Wichita, KS 67211 P 316-262-7271 F 316-262-0149
ENGINEERING | SURVEYING | PLANNING | LANDSCAPE ARCHITECTURE