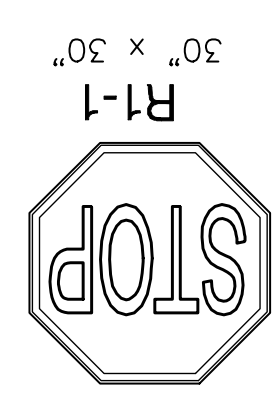




Lot 2 Block A
Straw Addition

CHONG H. CROFT
RI - 05810

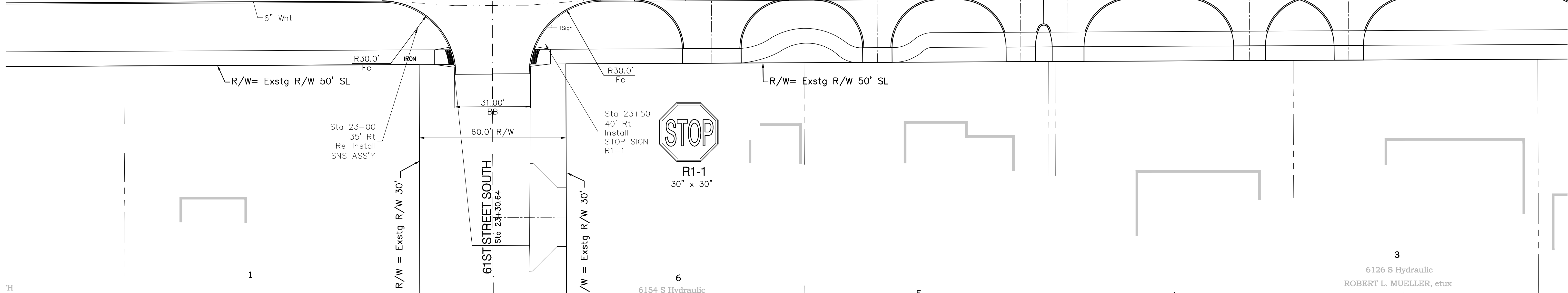
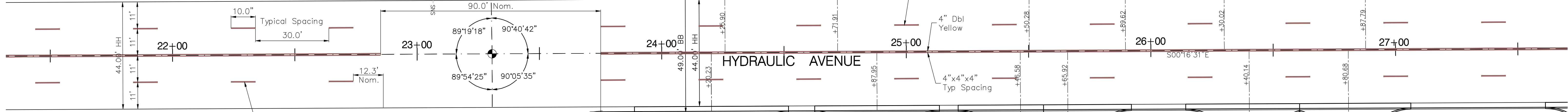
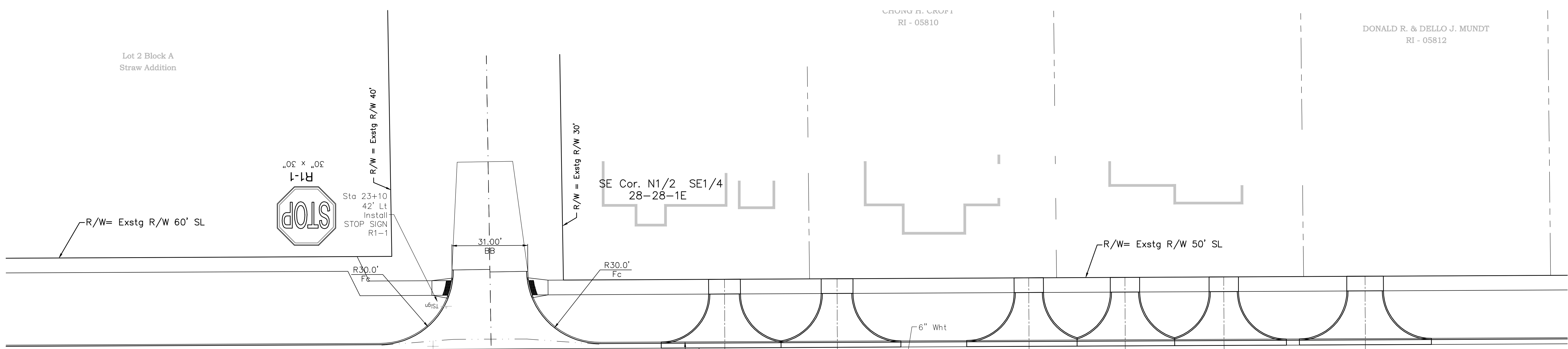
DONALD R. & DELLO J. MUNDT
RI - 05812



Sta 23+10
42' Lt
Install
STOP SIGN
R1-1

SE Cor. N1/2 SE1/4
28-28-1E

R/W= Exstg R/W 50' SL



ORCHARD	VIEW	2ND	ADDITION	SOUTH	HYDRAULIC	GARDENS	ADDITION	SC
	BLK 1			6154 S Hydraulic SHIRLEY A. COLEMAN RI - 05666		6136 & 6134 S Hydraulic VETERANS ADMINISTRATION RI - 05664		6126 S Hydraulic ROBERT L. MUELLER, etux RI - 05663

Drawing File: F:\eng\hydraulic_pha3\traffic base (MRK03)

Design: AZIERE	Project No. 9905E452	CAPITAL IMPROVEMENT PROJECT
Drawn: staff	Marking and Signing Plan	
Approved: JFB	Sta. 21+50 to Sta. 27+50	
Scale: NOTED	Hydraulic Avenue - from 63rd to 57th street south	

Baughman Company, P.A.
315 Ella St. Wichita, KS 67211 P 316-262-7271 F 316-262-0149
Baughman ENGINEERING | SURVEYING | PLANNING | LANDSCAPE ARCHITECTURE

SEPT. 2005
SHEET
OF 53
79