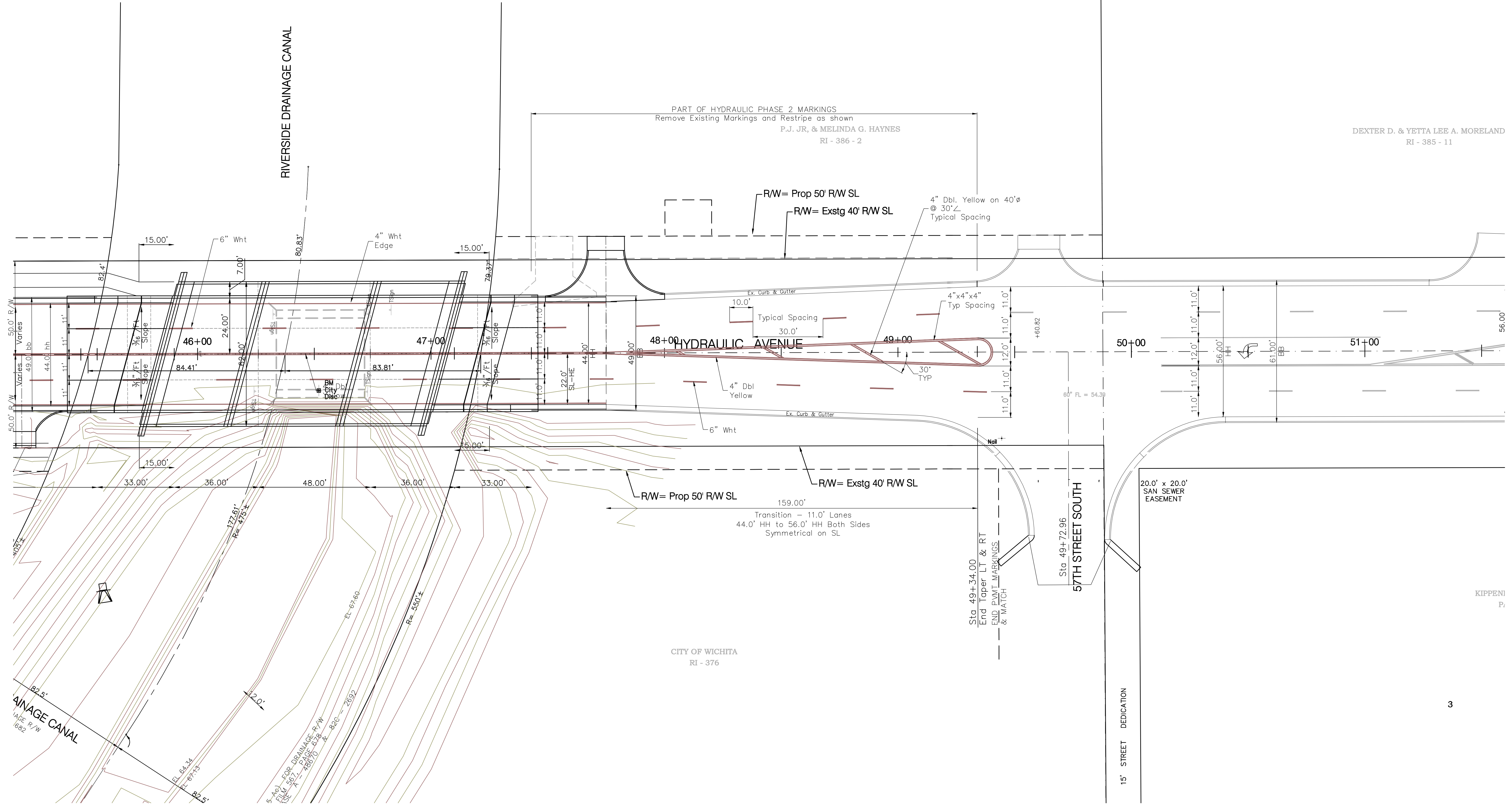


DEXTER D. & YETTA LEE A. MORELAND
RI - 385 - 11

PART OF HYDRAULIC PHASE 2 MARKINGS
Remove Existing Markings and Restripe as shown
P.J. JR, & MELINDA G. HAYNES
RI - 386 - 2



CITY OF WICHITA
RI - 376

KIPPEN
P.

3

Drawing File: F:\eng\hydraulic_ph3\traffic base (MRK07)
Design: AZIERE
Drawn: staff
Approved: JFB
Scale: NOTED

Project No. 99-09-E452 CAPITAL IMPROVEMENT PROJECT
Marking and Signing Plan
Sta. 45+50 to Sta. 49+34
Hydraulic Avenue - from 63rd to 57th street south

Baughman Company, P.A.
315 Ellis St. Wichita, KS 67211 P 316-262-7271 F 316-262-0149
ENGINEERING | SURVEYING | PLANNING | LANDSCAPE ARCHITECTURE

SEPT. 2005
SHEET
OF 57
79