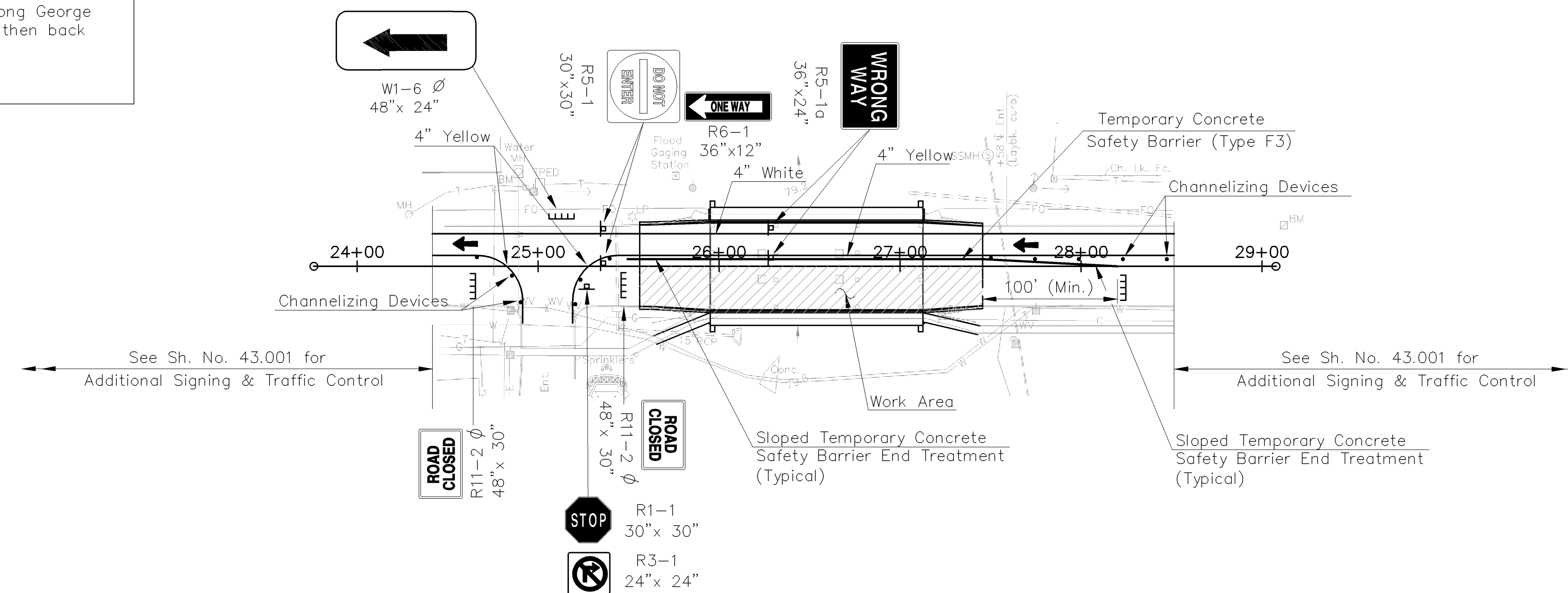


PHASE I

| PHASE | CONSTRUCTION | TRAFFIC ON |
|----------|---|---|
| Phase I | Remove existing pavement for Southbound lanes to limits shown. Construct limits of new structure to road centerline. Complete surfacing along with all incidental work required by the Engineer. | One Lane Southbound traffic on existing Northbound lanes. Detour Northbound traffic along George Washington Blvd. to Pawnee then back to Oliver. |
| Phase II | Remove existing pavement for Northbound lanes. Complete new structure. | One Lane Southbound traffic on new pavement for Southbound lanes. Detour Northbound traffic along George Washington Blvd. to Pawnee then back to Oliver. |

NOTES

- See additional traffic control on Standards Drawings included in these plans.
- The maximum spacing between channelizing devices should be approximately equal in feet to the speed limit.
- See Sh. No. 34 for Detour Signing.



LEGEND

- ← Traffic flow arrows.
- ▬ Type III Barricade.
- ∅ Mount on Type III Barricade.

PHASE II

J:\2003PROJ\03548\DWGS\CONSTRUCTION SEQUENCE 1"=50'

| | | |
|--|-----|----------|
| PROJECT NO. 87 N-0247-01 | | |
| CONSTRUCTION SEQUENCE & CONSTRUCTION SIGNING | | |
| OLIVER BRIDGE OVER GYPSUM CREEK | | |
| DESIGNED | RSC | SCALE |
| DETAILED | EES | DATE |
| QUANTITIES | | SHEET OF |

STA. 26+53.8 CITY OF WICHITA