

STATE	PROJECT NO.	YEAR	SHEET NO.	TOTAL SHEETS
KANSAS	87 N-0247-01	2005	35	48

GENERAL NOTES:

MATERIAL: Use ASTM A615, Grade 60 reinforcing bars, except for the loop bars (6D1, 6D2 and 6D3).

The loop bars (6D1, 6D2 and 6D3) shall be 3/4" smooth steel bars with a minimum yield of 60 ksi, a tensile strength of not less than 1.25 times the yield strength but a minimum of 80 ksi, a minimum 14% elongation in 8 inches, and passing a 180 degree bend test using a 3.5D pin bend diameter. The loops shall be installed within 1/8" of the plan dimensions.

Use air-entrained concrete with f'c = 5,000 p.s.i.

Use 1/8" Ø A307 Anchor Bolts with heavy hex nut & washer (A36). Use ASTM A36 material for the Connection Pin.

SECTION: The section furnished must generally comply with dimensions shown. Requests for minor variations in section geometry and attachments may be submitted to the Engineer for approval.

LIFTING SLOTS: Lifting slots shall be constructed where specified on the plans to facilitate the drainage of water after installation on the roadway.

TEMPORARY CONCRETE SAFETY BARRIER: Furnishing and placing of all materials when required and all labor and equipment required to position the temporary barrier shall be included in the Contract unit price bid for "Concrete Safety Barrier (Type F3)(Temporary)". Any relocation of the barrier required for the project shall be paid in accordance with the Special Provisions under the bid item "Concrete Safety Barrier (Type F3)(Temporary-Relocate)". Unless otherwise noted on the Plans, the Temporary Concrete Safety Barrier shall become the property of the Contractor and shall be removed from the site upon acceptance of the completed project. Approximate weight of one unit equals 2.7 tons.

SURFACE PREPARATION: Barrier shall be placed on a paved surface. All loose dirt and sand shall be removed from the roadway surface just prior to placement of the barrier.

DELINEATION: See Standard Drawing RD622B for delineator notes and details.

MARKING: The left end (†) of each barrier shall be permanently marked by stamping or forming into the barrier the following information:

- Type F3
- Manufacturer code (as specified by KDOT Bureau of Const. & Maint.)
- Date manufactured (month and year)

At no time shall the barriers be lifted, moved, etc by use of the loop bars: 6D1, 6D2 or 6D3.

Per 12'-6" Barrier Section

REINFORCING A615 Gr. 60					
Bar	Bar Size	Shape	No. of Bars	Length Ft.	Weight Lbs.
4A1	4	⌒	12	6'-0"	48.1
6A2	6	⌒	6	2'-11"	26.3
5B1	5	—	3	12'-2"	38.1
4C1	4	—	2	12'-2"	16.3
LOOP ASSEMBLY					
6D1	6	⌒	2	8'-5"	25.3
6D2	6	⌒	2	7'-7"	22.8
6D3	6	⌒	2	8'-6"	25.5

Concrete Quantity = 1.3 C.Y.

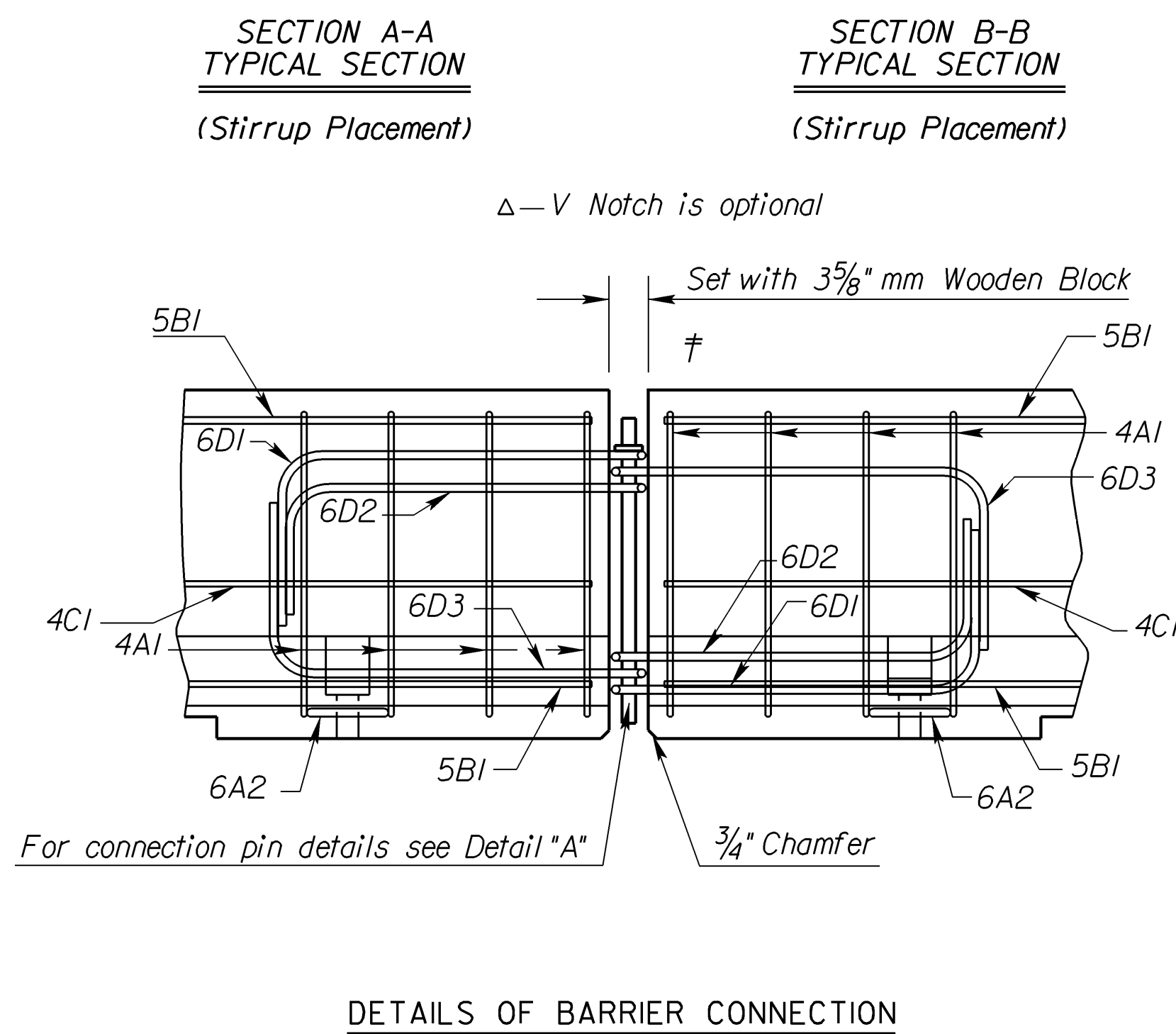
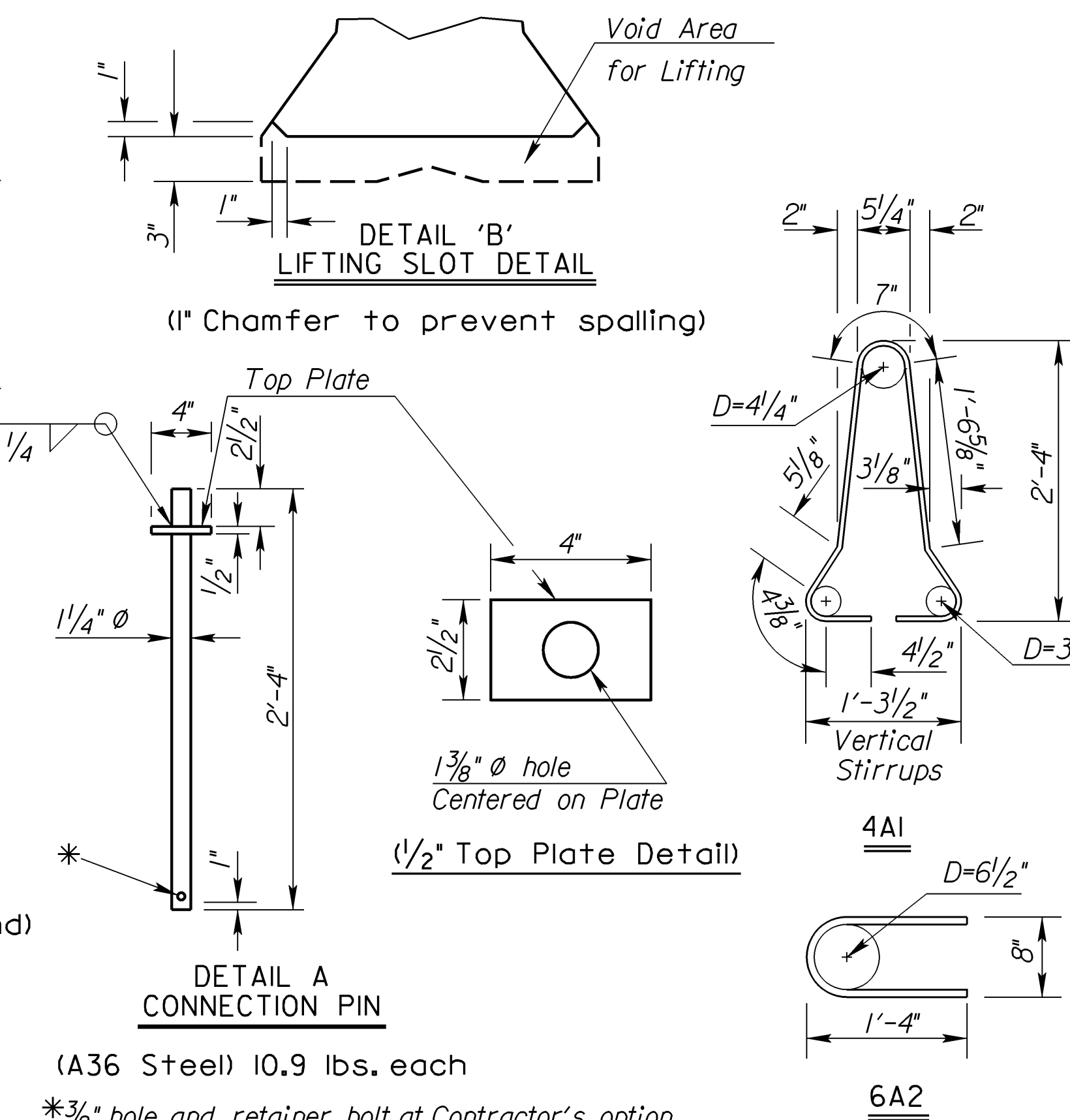
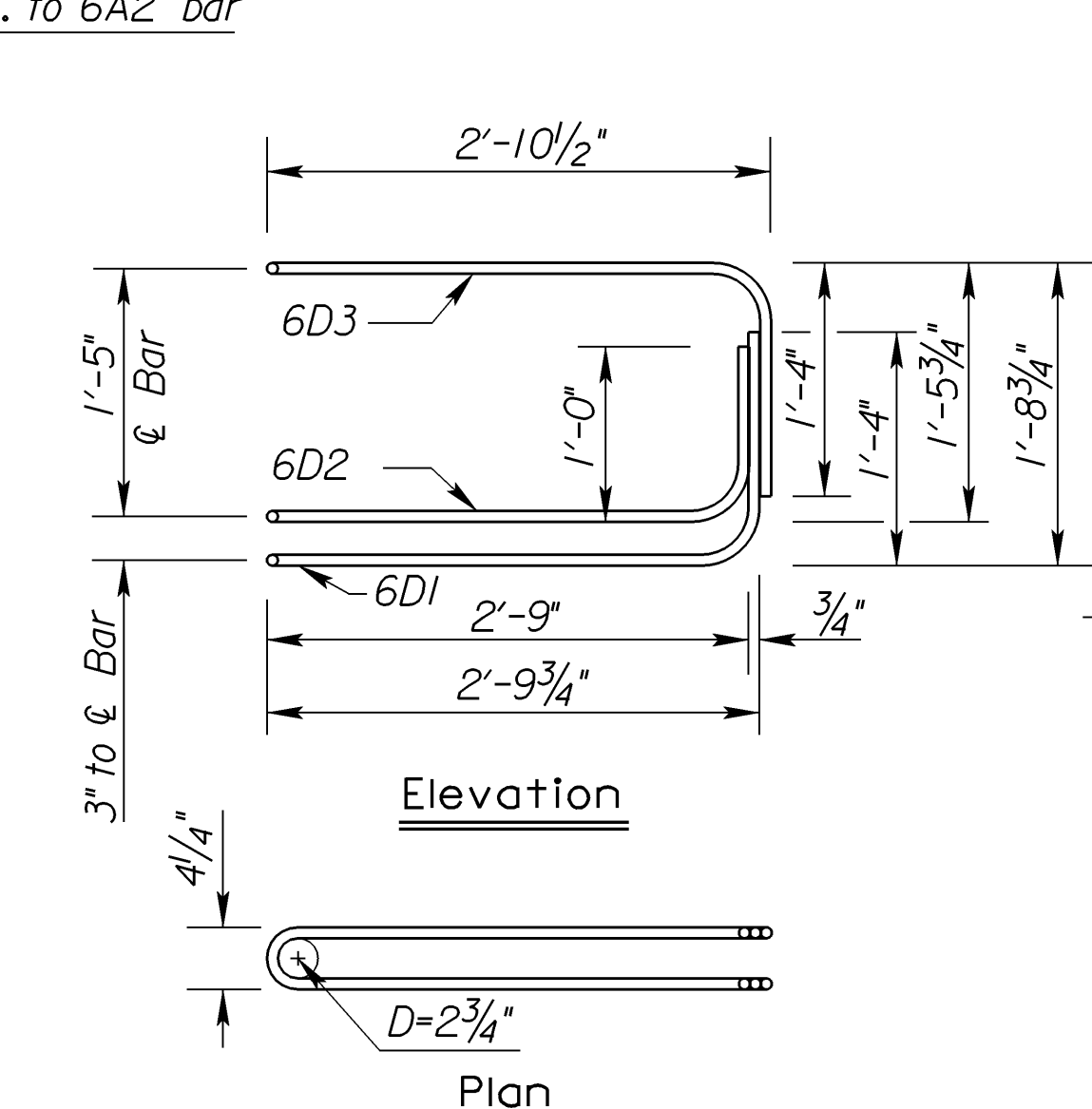
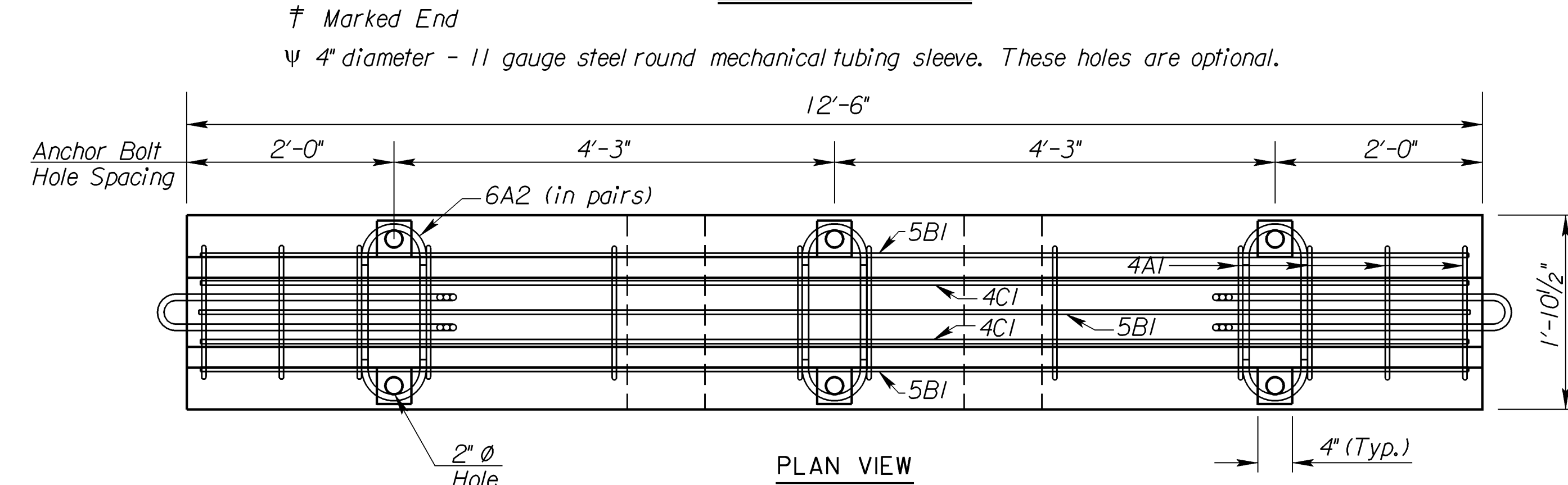
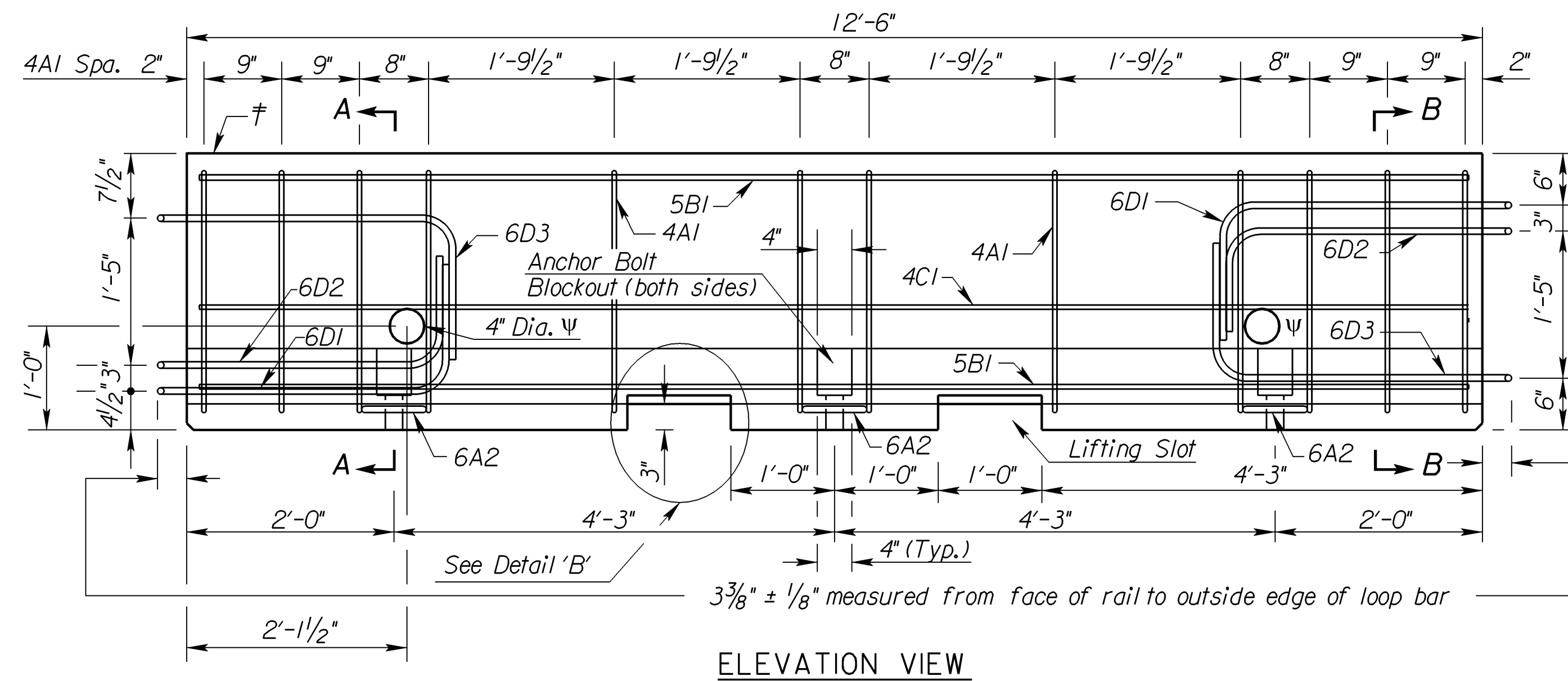
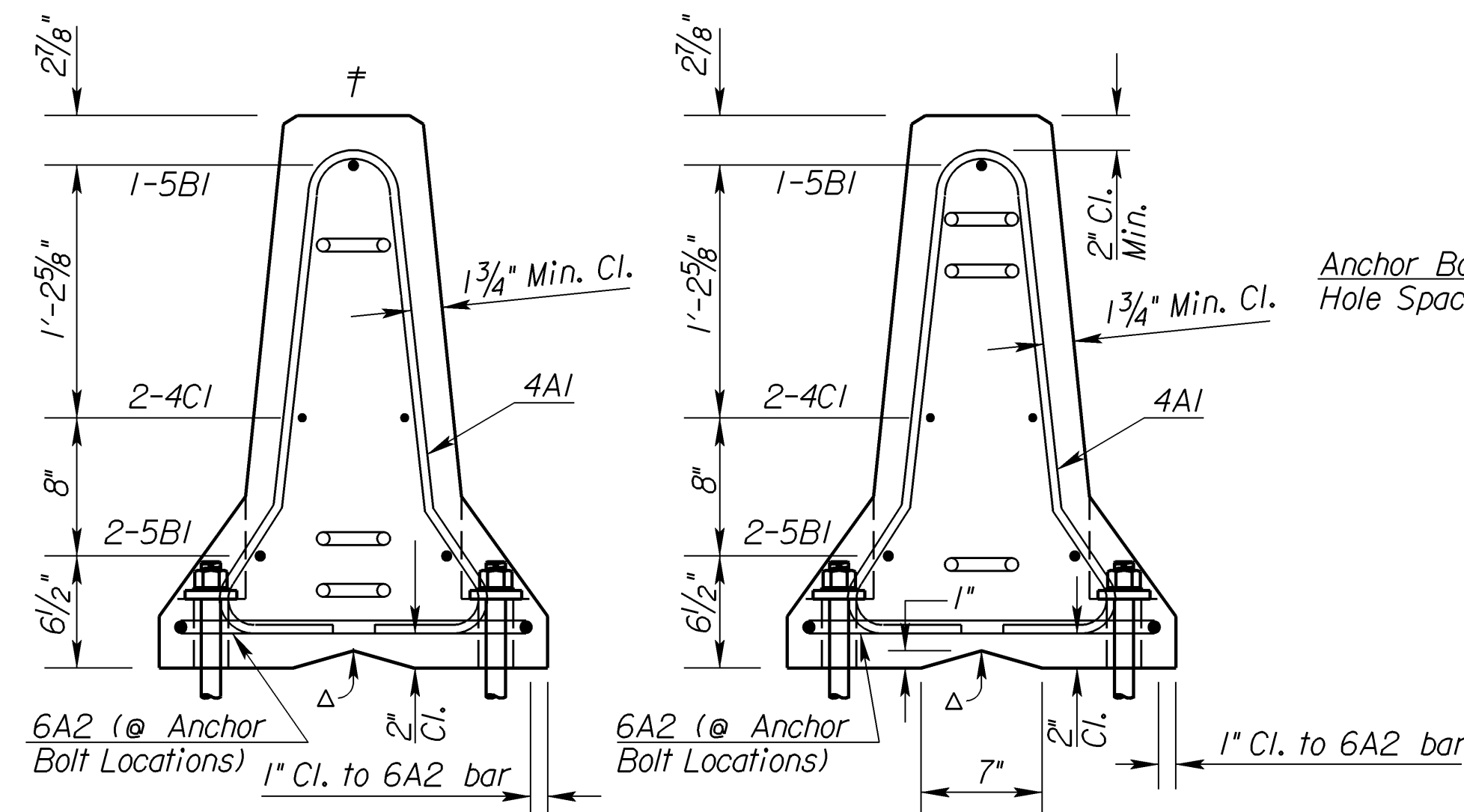
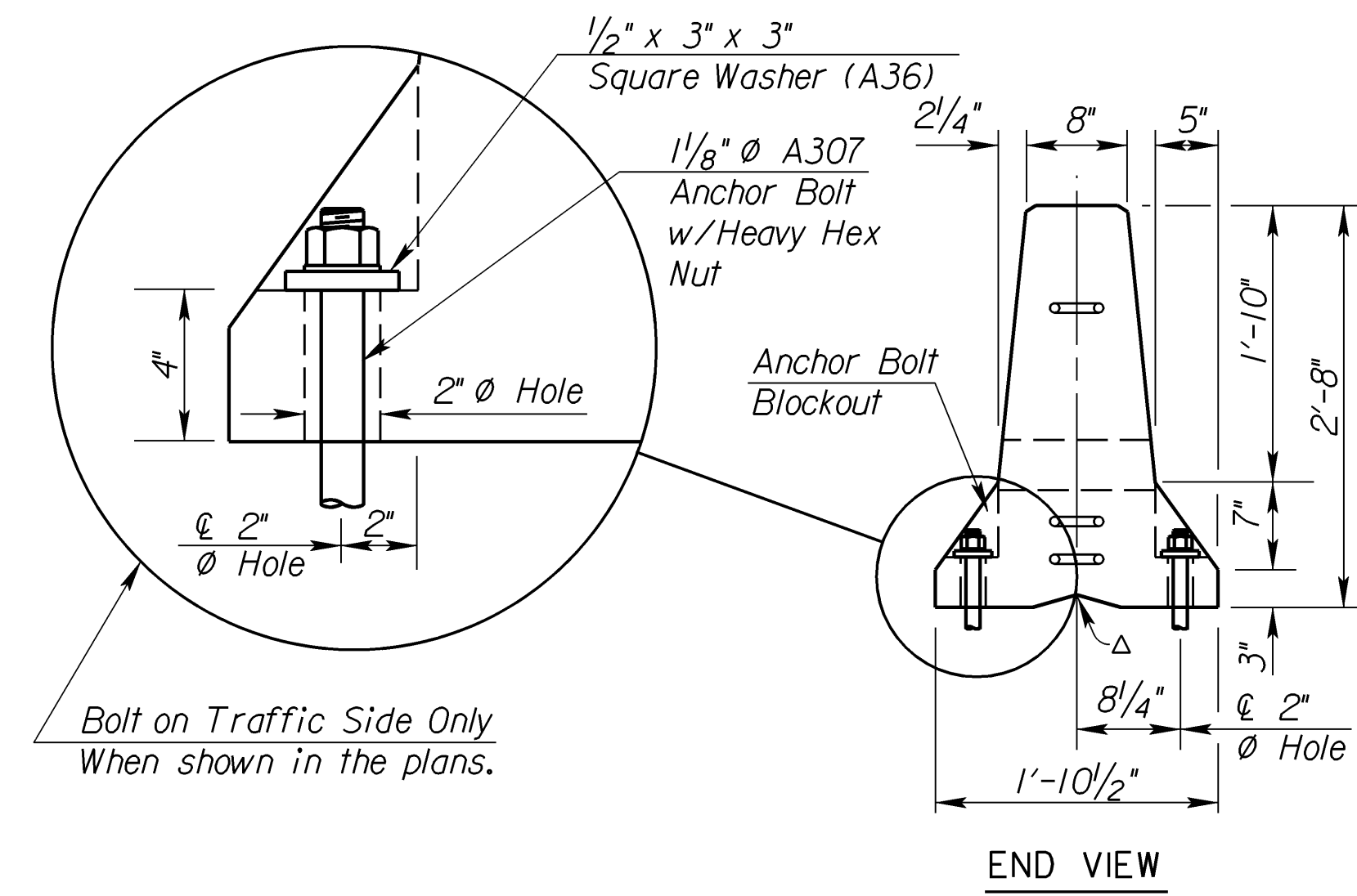
NO.	DATE	REVISIONS	BY	APP'D
3				
2				
1				

KANSAS DEPARTMENT OF TRANSPORTATION

TEMPORARY CONCRETE SAFETY BARRIER TYPE F3

RD622

FHWA APPROVAL	9-25-02	APP'D James O. Brewer
DESIGNED	DETAILED	QUANTITIES
DESIGN CK.	DETAIL CK.	QUAN. CK.



(Marked end shown, invert for other end)
(Material as stated in General Notes)
(Dimensions are out to out of bars unless otherwise noted.)

(A36 Steel) 10.9 lbs. each
*3/8" hole and retainer bolt at Contractor's option.

Std. Base File: _____ Plot Location: \$/UNIT/\$
 Plotted By: unfiled File: \$\$\$\$\$\$DGN\$SPEC\$
 Plot Date: 11/9/2004