

CL STA. 10+00.00
N. 5564.69' 2630.240'
OFFICE CALCULATED POINT
(NO MONUMENT)

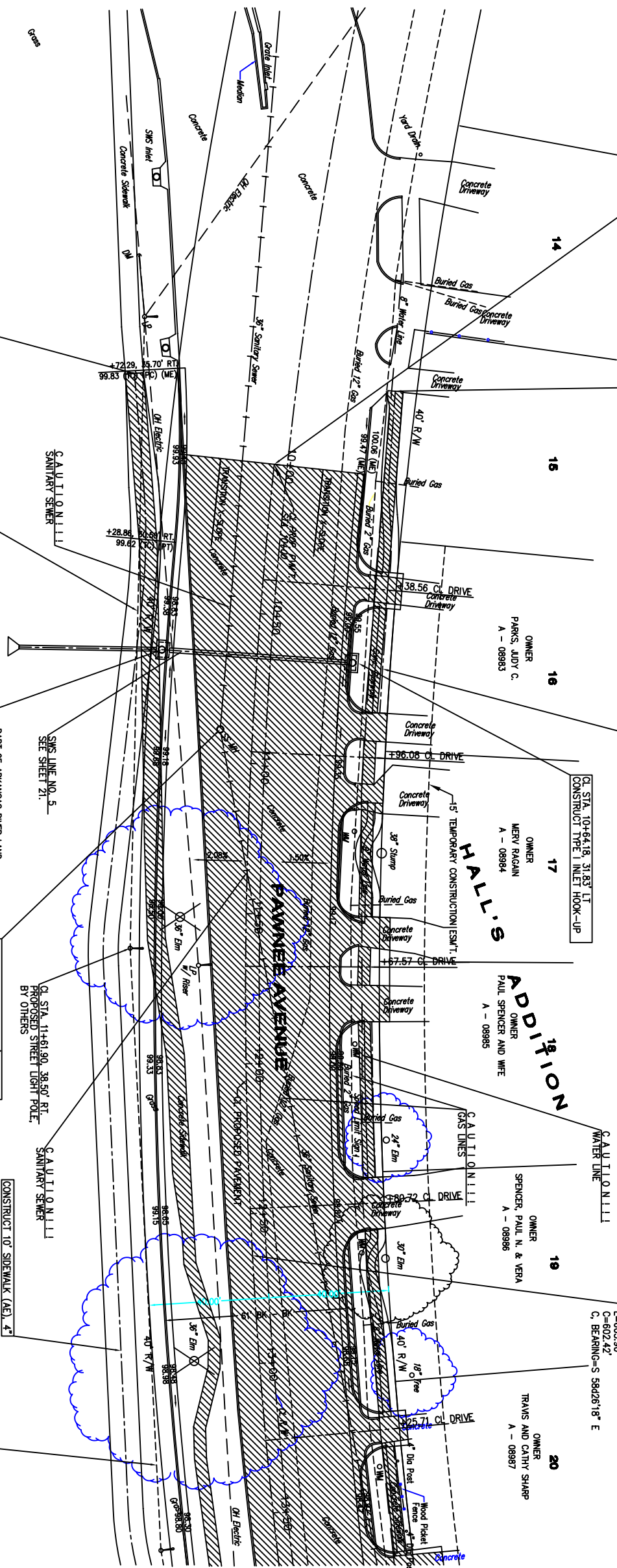
CL STA. 10+00.00
87 N-0237-01
SAW CUT EXISTING CONCRETE PAVEMENT

CL STA. 9+70.75, 37.19' LT
START SIDEWALK CONSTRUCTION

CL STA. 10+64.19, 31.83' LT
CONSTRUCT TYPE 1 INLET HOOK-UP

CL STA. 10+00.00 TO STA. 16+05.90
R=1628.50'
DELTA=219°04'
L=605.90'
C=602.42'
C BEARING=S 88.26°18' E

COUNTY	STATE	PROJECT NUMBER	FISCAL YEAR	SHEET NO.	TOTAL SHEETS
SEDGWICK	KANSAS	87 N-0237-01	2006	5	78



NOTE: WHERE 2" CONDUIT IS TO BE INSTALLED, PROPPOSED STREET LIGHT POLE LOCATION, CONTACT WESTAR ENERGY, 261-6514, PRIOR TO INSTALLING CONDUIT TO COORDINATE THE EXACT LOCATION OF THESE ELBOWS.

CL STA. 9+75.70, 49.78' RT
START SIDEWALK CONSTRUCTION

CL STA. 9+57.08, 48.97' RT TO
CL STA. 11+61.90, 38.50' RT
INSTALL 2" PVC CONDUIT.

CL STA. 10+64.19, 31.83' RT
CONSTRUCT TYPE 1 INLET HOOK-UP

CL STA. 10+89.18, 10.78' RT
NO. 12 SAN SEWER MANHOLE TOP
EXISTING TOP ELEV. = 99.87
PROPOSED TOP ELEV. = 99.61

CL STA. 11+61.90, 38.50' RT
PROPOSED STREET LIGHT POLE
BY OTHERS

CL STA. 11+61.90, 38.50' RT TO
CL STA. 13+50.00, 38.01' RT
INSTALL 192.41 LF 2" PVC CONDUIT

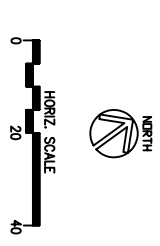
PAVEMENT REMOVAL THIS SHEET

CONCRETE DRIVE	1780 SY
CONCRETE DRIVE	485 SY
CONCRETE DRIVE	2179 SY
CONCRETE DRIVE	202 SY
CONCRETE DRIVE	2452 SY
CONCRETE DRIVE	729 SY
CONCRETE DRIVE	515 SY
CONCRETE DRIVE	1 EA
CONCRETE DRIVE	1 EA
CONCRETE DRIVE	403 LF

NOTES:
1. UNLESS OTHERWISE INDICATED DIMENSIONS ARE MEASURED TO BACK OF CURB.
2. THE CONTRACTOR SHALL FIELD VERIFY HORIZONTAL UTILITY LINES PRIOR TO CONSTRUCTION. REPORT ANY DISCREPANCIES TO THE ENGINEER.
3. ALL TREE REMOVAL INDICATED ON PAVING PLANS SHALL BE IN ACCORDANCE WITH CITY OF WICHITA STANDARD SPECIFICATIONS. ALL STUMPS AND ROOTS 2" AND LARGER SHALL BE REMOVED TO A DEPTH OF 2' BELOW THE BOTTOM OF PAVEMENTS AREAS.

BENCHMARK:
1" IN TOP OF CURB AT SOUTH SIDE OF DRIVE STRIP, 10' WEST OF THE NE CORNER OF PAWSIDE AVENUE AND PAWNEE AVENUE. ELEV. = 98.87 (CITY DATUM)

LEGEND:
 (LP) = LOW POINT
 (HP) = HIGH POINT
 (PC) = POINT OF CURVATURE
 (PT) = POINT OF TANGENCY
 TC = TOP OF CURB
 ON = GROWN
 FL = FLOWLINE
 ME = MATCH EXISTING ELEVATION
 = DIRECTION OF STORMWATER FLOW
 = PAVEMENT REMOVAL



110	100.00	10+00	10+50	11+00	11+50	12+00	12+50	13+00	13+50
105	100.00	10+00	10+50	11+00	11+50	12+00	12+50	13+00	13+50
100	100.00	10+00	10+50	11+00	11+50	12+00	12+50	13+00	13+50
95	100.00	10+00	10+50	11+00	11+50	12+00	12+50	13+00	13+50
90	100.00	10+00	10+50	11+00	11+50	12+00	12+50	13+00	13+50

scale: as noted
 drawn by: dds
 checked by: cry
 date: Mar. 2006
 P/N: 04-179
 revisions:

PAWNEE AVENUE
 (CL STA. 10+00.00 TO BL STA. 13+50.00)

Paving & Storm Sewer Improvements
 City of Wichita
 Sedgwick County, Kansas

YOUNG & ASSOCIATES, P.A.
 Civil and Environmental Engineers

100 S. Georgie, Derby, KS 67037
 Tel: (316)788-2552
 Fax: (316)788-4408

Sheet No.
 5 of 78