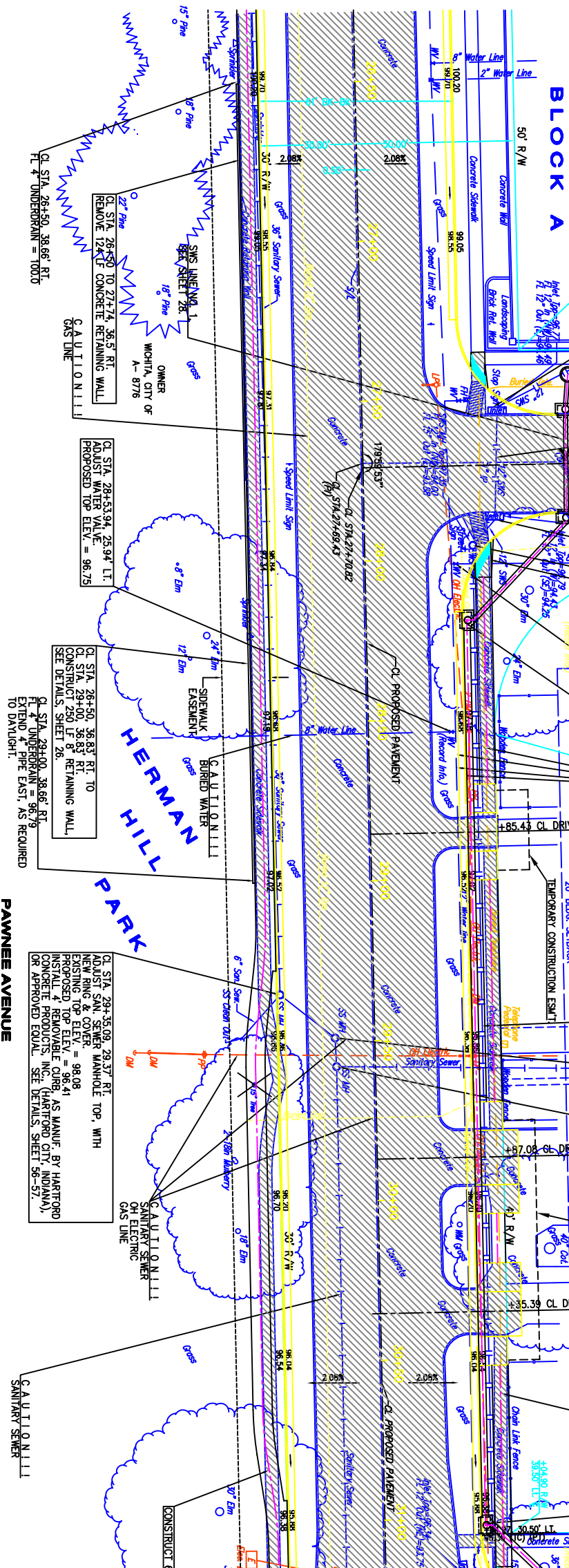
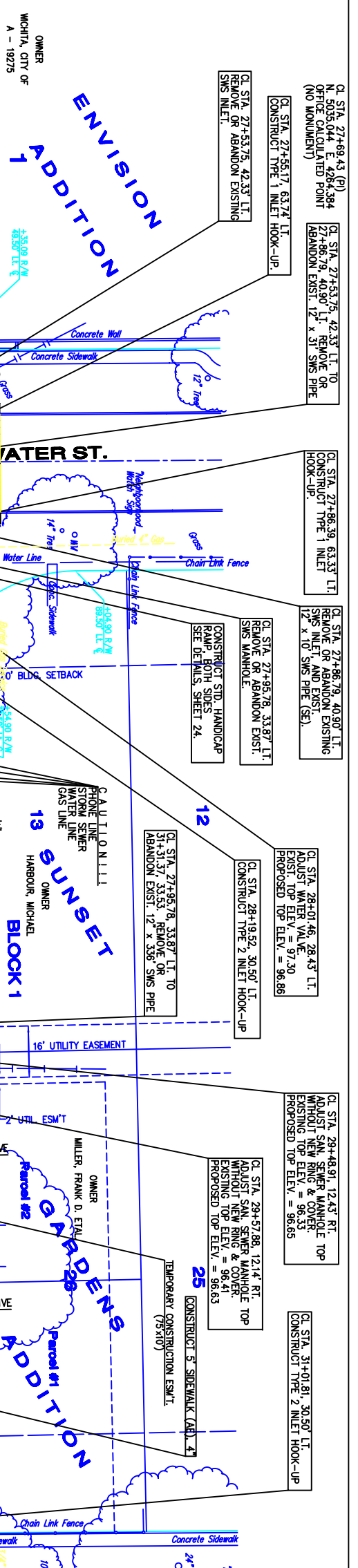


COUNTY	STATE	PROJECT NUMBER	FISCAL YEAR	SHEET NO.	TOTAL SHEETS
SEDGWICK	KANSAS	87 N-0237-01	2006	9	78



LEGEND:

- (LP) = LOW POINT
- (HP) = HIGH POINT
- (PC) = POINT OF CURVATURE
- (PT) = POINT OF TANGENCY
- TC = TOP OF CURB
- CH = CHAIN LINK FENCE
- FL = FLOWLINE
- ME = MATCH EXISTING ELEVATION
- ☐ = DIRECTION OF STORMWATER FLOW
- ▨ = PAVEMENT REMOVAL

NOTES:

- UNLESS OTHERWISE INDICATED, DIMENSIONS ARE MEASURED TO BACK OF CURB.

BENCHMARK:

- "C" IN TOP OF CURB ON NORTH SIDE OF SMS INLET AT THE NW CORNER OF WATER STREET AND PAWNEE AVENUE. ELEV. = 96.77 (CITY DATUM)
- "C" IN TOP OF CURB ON NORTH SIDE OF SMS INLET AT THE NE CORNER OF MAIN STREET AND PAWNEE AVENUE. ELEV. = 96.52 (CITY DATUM)

PAWNEE AVENUE
(CL STA. 26+50.00 TO BL STA. 31+04.97)

PAWNEE AVENUE
CL STA. 26+50.00 TO BL STA. 31+04.97

PAWNEE AVENUE
CL STA. 26+50.00 TO BL STA. 31+04.97

110	MATCH LINE, SEE SHEET 8 FOR CONTINUATION	100.32	26+50	27+00	27+50	28+00	28+50	29+00	29+50	30+00	30+50	31+00
105												
100												
95												
90												

scale: as noted
 drawn by: dds
 checked by: cry
 date: Mar. 2006
 P/N: 04-179
 revisions:

PAWNEE AVENUE
(CL STA. 26+50.00 TO BL STA. 31+04.97)

Paving & Storm Sewer Improvements
 City of Wichita
 Sedgwick County, Kansas

YOUNG & ASSOCIATES, P.A.
 Civil and Environmental Engineers

100 S. Georgie, Derby, KS 67037
 Tel: (316)788-2552
 Fax: (316)788-4408

Sheet No.
 9 of 78