

COUNTY	STATE	PROJECT NUMBER	FISCAL YEAR	SHEET NO.	TOTAL SHEETS
SEDGWICK	KANSAS	87 N-0237-01	2006	11	78

CL STA. 36+00 TO STA. 37+64
 REMOVE 363.67 SY CONCRETE PAVEMENT, INCLUDING EXISTING MEDIAN. REPLACE WITH 5" ASPHALT PAVEMENT (TEMPORARY). WHEN DIRECTED BY FIELD ENGINEER, REMOVE THE TEMPORARY ASPHALT, AND CONSTRUCT 255.37 SY CONCRETE PAVEMENT, INCLUDING MEDIAN WITH 39.96 SY BRICK PAVERS, AS INDICATED.

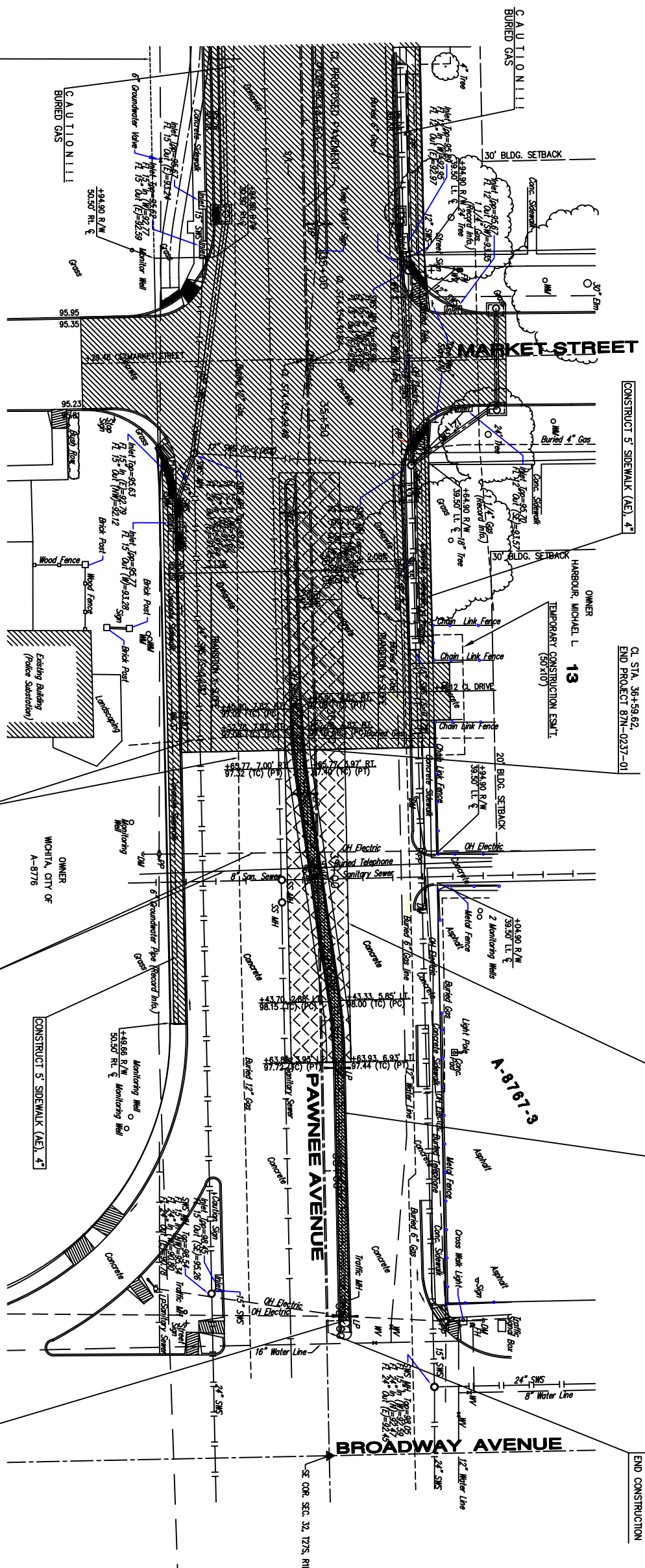
CL STA. 36+52.85 TO STA. 37+63.93
 REMOVE 29.44 SY ASPHALT BETWEEN BACK OF CURB IN EXISTING MEDIAN. REPLACE WITH BRICK PAVERS. SEE DETAIL, SHEET 4.

CL STA. 37+63.93, LT. TO STA. 38+53.85, LT.
 REMOVE 29.44 SY ASPHALT BETWEEN BACK OF CURB IN EXISTING MEDIAN. REPLACE WITH BRICK PAVERS. SEE DETAIL, SHEET 4.

CL STA. 37+63.93, LT. TO STA. 38+53.85, LT.
 REMOVE 29.44 SY ASPHALT BETWEEN BACK OF CURB IN EXISTING MEDIAN. REPLACE WITH BRICK PAVERS. SEE DETAIL, SHEET 4.

CL STA. 36+59.62, END PROJECT 87N-0237-01

CL STA. 39+53.85, END CONSTRUCTION



CL STA. 38+52.589' LT. REMOVE AND RE-CONSTRUCT EAST NOSE OF MEDIAN. COST SHALL BE SUBSIDIARY TO PRICE BID FOR COMBINED CURB & GUTTER (TYPE 1).

PAVEMENT REMOVAL, THIS SHEET
 CONC. AND/OR ASPH. SIDEWALK, DRIVE, THIS SHEET
 AC TEMP. PAVEMENT 5" (3" BIT. BASE), THIS SHEET
 CONCRETE PAVEMENT (9" A. MIN. THICKNESS), THIS SHEET
 REINFORCED CRUSHED ROCK BASE (8"), THIS SHEET
 CURB, C&G (TYPE 1), THIS SHEET
 MEDIAN CONC. C&G (TYPE 1), THIS SHEET
 SIDEWALK, CONCRETE (4"), THIS SHEET
 2"/8" BRICK PAVERS, (4") SAND, THIS SHEET

BENCHMARK:
 "LT" IN TOP OF CURB, 5.6' NORTH OF NORTH EDGE
 SWS INLET, AT THE NE CORNER OF MARKET STREET
 AND PAWNEE AVENUE (VDOT)
 ELEV. = 83.54' (CITY DATUM)
 CITY OF WICHITA BRASS DISC, PAWNEE AVENUE AND
 BROADWAY STREET 32 FEET NORTH OF CL PAWNEE,
 AND 40 FEET WEST OF CL BROADWAY
 ELEV. = 88.40' (CITY DATUM)

NOTES:
 1. UNLESS OTHERWISE INDICATED, DIMENSIONS ARE
 MEASURED TO BACK OF CURB.

- LEGEND:**
- (LP) = LOW POINT
 - (HP) = HIGH POINT
 - (CP) = POINT OF CURVATURE
 - (PT) = POINT OF TANGENCY
 - TC = TOP OF CURB
 - ON = CROWN
 - FL = FLOWLINE
 - ME = MATCH EXISTING ELEVATION
 - DR = DIRECTION OF STORMWATER FLOW
 - = PAVEMENT REMOVAL
 - = TEMPORARY ASPHALT (5")

110	105	100	95	90
36+00	36+50	37+00	37+50	38+00
38+50	39+00	39+50	40+00	40+50
36+00	36+50	37+00	37+50	38+00
38+50	39+00	39+50	40+00	40+50

Scale: as noted
 drawn by: dds
 checked by: cry
 date: Mar. 2006
 P/N: 04-179
 Revisions:

PAWNEE AVENUE
 (CL STA. 36+00.00 TO CL STA. 39+53.85)

Paving & Storm Sewer Improvements
 City of Wichita
 Sedgwick County, Kansas

YOUNG & ASSOCIATES, P.A.
 Civil and Environmental Engineers

100 S. Georgie, Derby, KS 67037
 Tele: (316)788-2552
 Fax: (316)788-4408

Sheet No.
 11 of 78