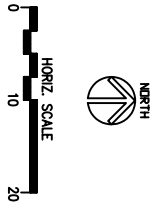
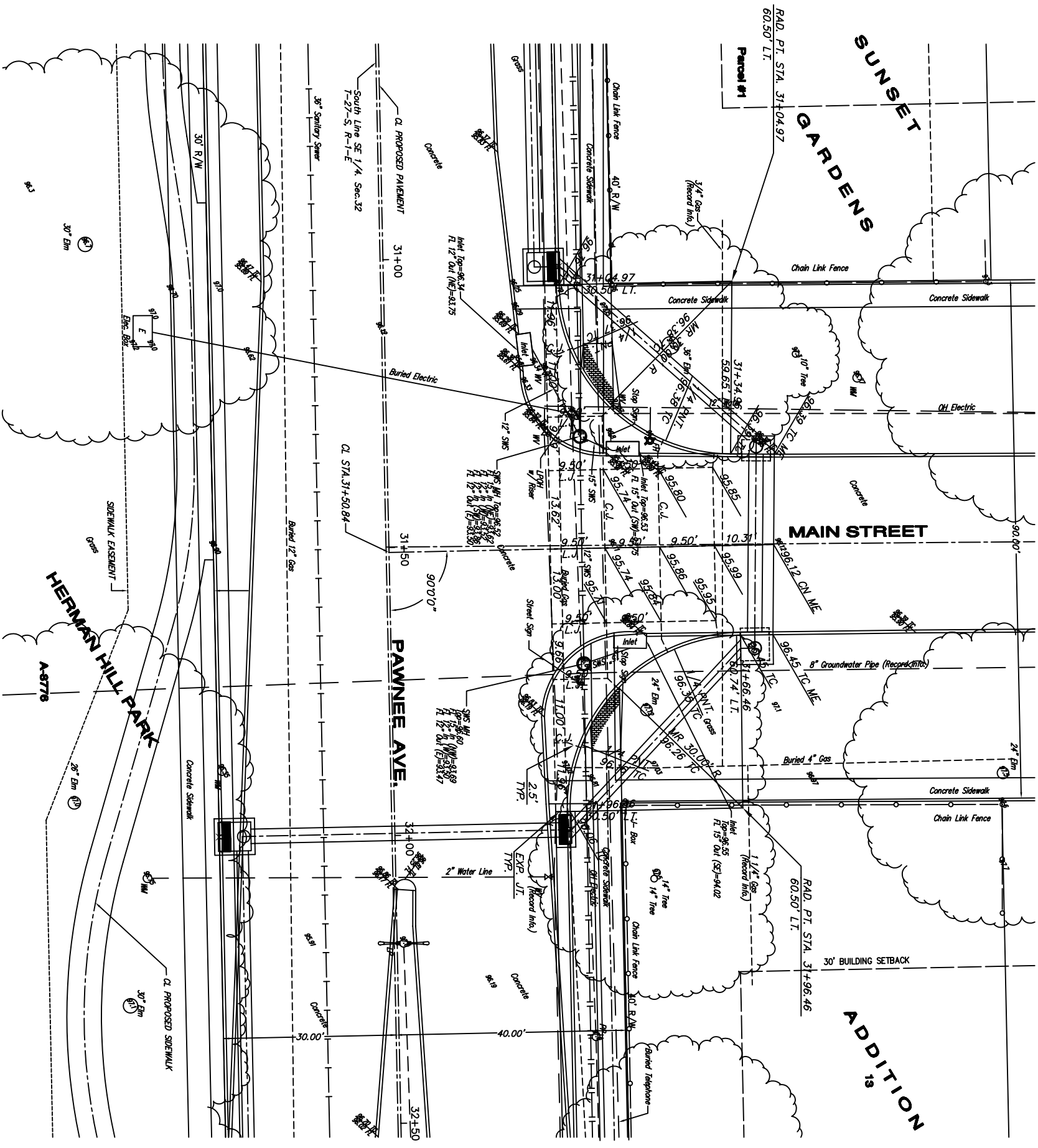


COUNTY	STATE	PROJECT NUMBER	FISCAL YEAR	SHEET NO.	TOTAL SHEETS
SEDGWICK	KANSAS	87 N-0237-01	2006	14	78



- LEGEND:**
- (LP) = LOW POINT
 - (HP) = HIGH POINT
 - (PC) = POINT OF CURVATURE
 - (PT) = POINT OF TANGENCY
 - TC = TOP OF CURB
 - CN = CROWN
 - FL = FLOWLINE
 - ME = MATCH EXISTING ELEVATION

NOTES:
 1. UNLESS OTHERWISE INDICATED, DIMENSIONS ARE MEASURED TO BACK OF CURB.

BENCHMARK:
 * "C" IN TOP OF CURB ON NORTH SIDE OF SWS INLET, AT THE NE CORNER OF MAIN STREET AND PAWNEE AVENUE.
 ELEV. = 96.52 CITY DATUM

MAIN ST. INTERSECTION

INTERSECTION DETAILS (PAWNEE AVENUE & MAIN STREET)

Paving & Storm Sewer Improvements
 City of Wichita
 Sedgwick County, Kansas

YOUNG & ASSOCIATES, P.A.

Civil and Environmental Engineers

100 S. Georgie, Derby, KS 67037
 Tele: (316)788-2552
 Fax: (316)788-4408

Copyright 2006, by Young & Associates, P.A. All rights reserved. Printed in the United States of America. This document, or parts thereof, or certain contents contained herein, are hereby constituted as a project of Young & Associates, P.A. and may not be reproduced in any form without the specific written permission of Young & Associates, P.A. This plan and contract is the exclusive property of Young & Associates, P.A. the liability of the contract or correct interior does not constitute Professional Engineer.

scale: as noted
 drawn by: dds
 checked by: cry
 date: Mar. 2006

P/N: 04-179
 Revisions:

Sheet No.
 14 of 78