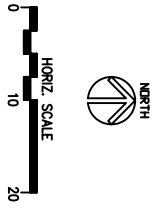
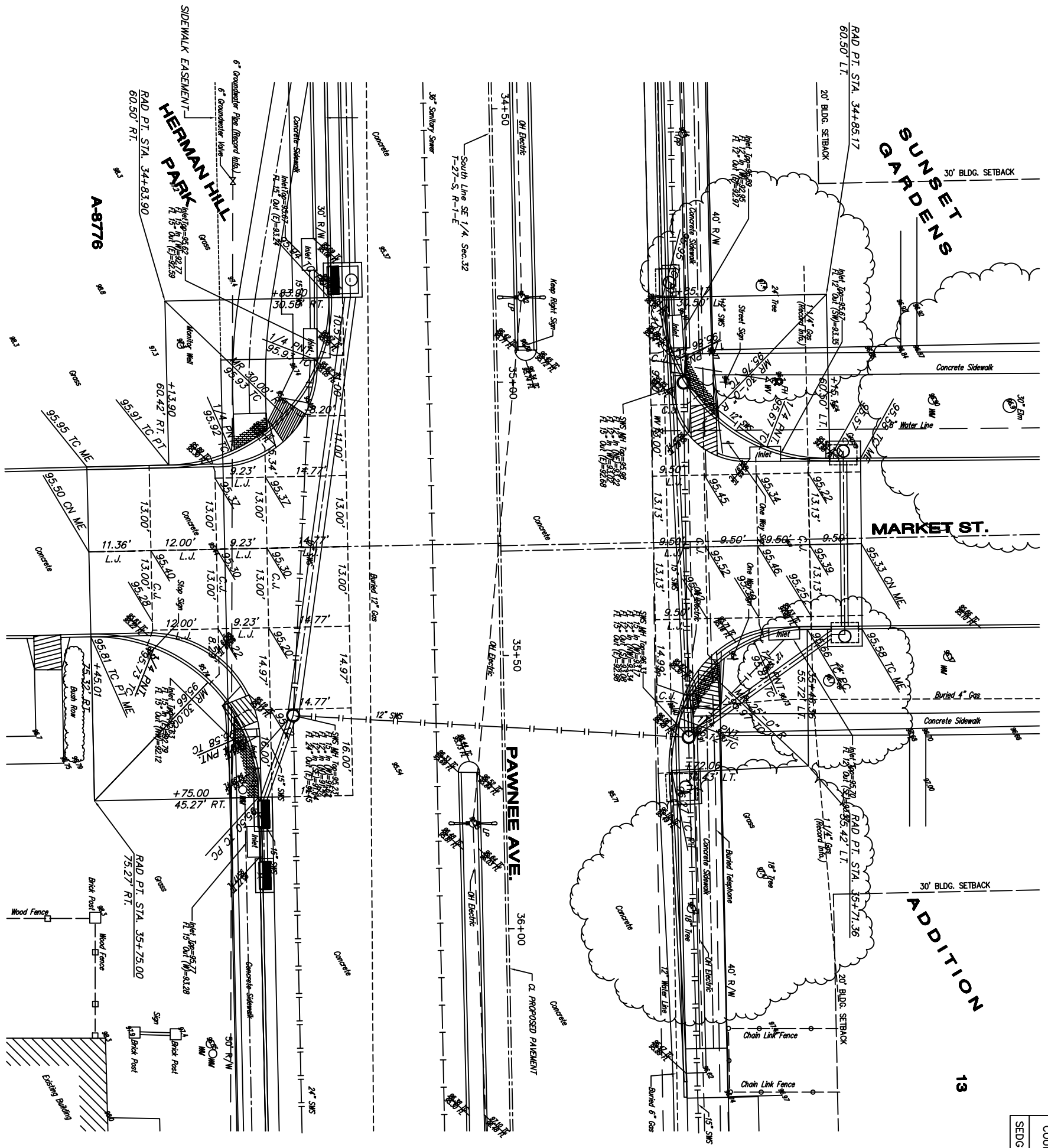


COUNTY	STATE	PROJECT NUMBER	FISCAL YEAR	SHEET NO.	TOTAL SHEETS
SEDGWICK	KANSAS	87 N-0237-01	2006	15	78

13



- LEGEND:**
- (LP) = LOW POINT
 - (HP) = HIGH POINT
 - (PC) = POINT OF CURVATURE
 - (PT) = POINT OF TANGENCY
 - TC = TOP OF CURB
 - CN = CROWN
 - FL = FLOWLINE
 - ME = MATCH EXISTING ELEVATION

NOTES:
 1. UNLESS OTHERWISE INDICATED, DIMENSIONS ARE MEASURED TO BACK OF CURB.

BENCHMARK:
 * "D" IN TOP OF CURB, 5.6' NORTH OF NORTH EDGE SMS INLET, AT THE NE CORNER OF MARKET STREET AND PAWNEE AVENUE. ELEV. = 95.54 CITY DATUM

MARKET ST. INTERSECTION

A-8776

INTERSECTION DETAILS (PAWNEE AVENUE & MARKET STREET)

Paving & Storm Sewer Improvements
 City of Wichita
 Sedgwick County, Kansas

YOUNG & ASSOCIATES, P.A.
 Civil and Environmental Engineers

100 S. Georgie, Derby, KS 67037
 Tele: (316)788-2552
 Fax: (316)788-4408

Copyright 2006, by Young & Associates, P.A. All rights reserved. Reproduction in any form without the specific written permission of Young & Associates, P.A. is prohibited. This plan and contract are the property of Young & Associates, P.A. The liability of the engineer or contractor shall not constitute professional liability.

Scale: as noted
 drawn by: dds
 checked by: cry
 date: Mar. 2006
 P/N: 04-179
 Revisions:

Sheet No.
 15 of 78