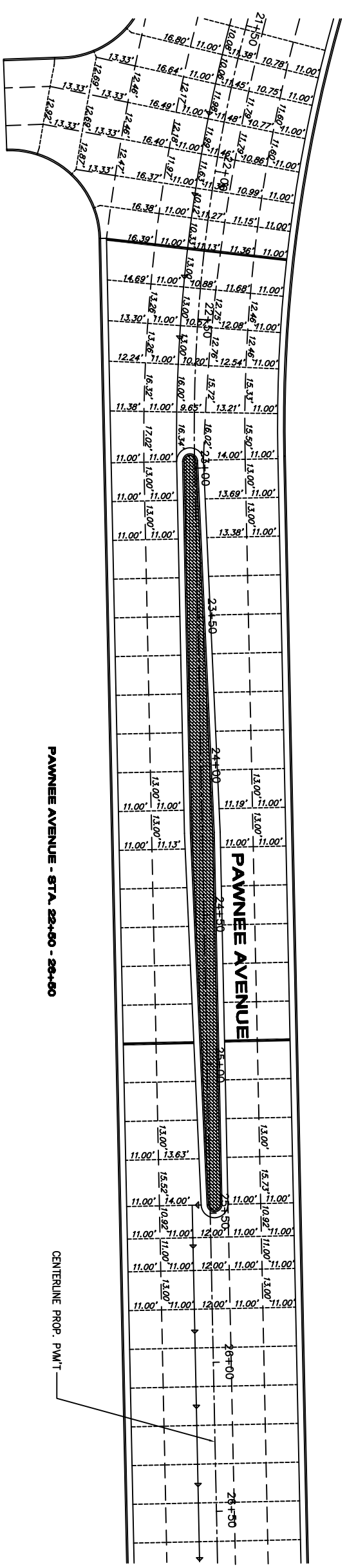
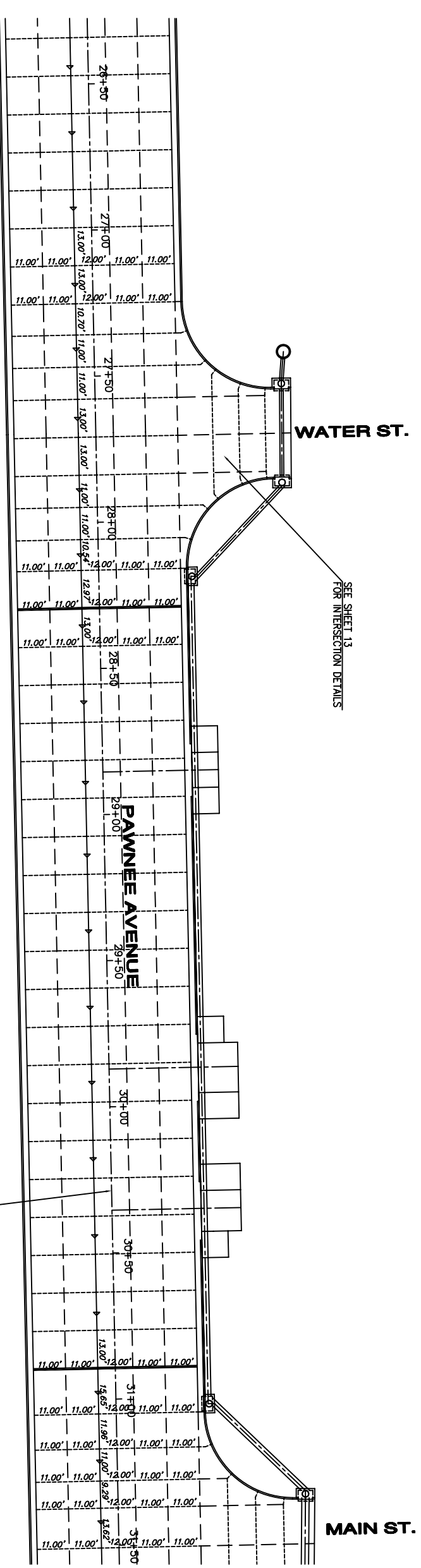
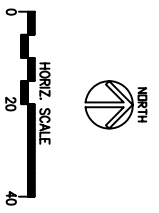


COUNTY	STATE	PROJECT NUMBER	FISCAL YEAR	SHEET NO.	TOTAL SHEETS
SEDGWICK	KANSAS	87 N-0237-01	2006	18	78



PAWNEE AVENUE - STA. 22+50 - 26+50

CENTERLINE PROP. P.W.M.T.



PAWNEE AVENUE - STA. 26+50 - 31+50

CENTERLINE PROP. P.W.M.T.

LEGEND:

- L1 - LONGITUDINAL JOINT
- C1 - CONTRACTION JOINT
- LC1 - LONGITUDINAL CONSTRUCTION JOINT
- E1 - EXPANSION JOINT

SEE SHEETS 20 & 22 FOR JOINT DETAILS.

Sheet No.
18 of 78

REINF. CONCRETE PAVEMENT JOINT PLAN
 (CL STA. 22+50.00 TO CL STA. 31+50.00)
 Paving & Storm Sewer Improvements
 City of Wichita
 Sedgwick County, Kansas

YOUNG & ASSOCIATES, P.A.
 Civil and Environmental Engineers
 100 S. Georgie, Derby, KS 67037
 Tel: (316)788-2552
 Fax: (316)788-4408

Scale: as noted
 drawn by: dds
 checked by: cry
 date: Mar. 2006
 P/N: 04-179
 Revisions:

Copyright 2006, by Young & Associates, P.A. All rights reserved. Reproduction in any form without the specific written permission of Young & Associates, P.A. This plan and contract is the property of Young & Associates, P.A. The delivery of the contract or copies hereof does not constitute publication hereof.