

CL STA. 35+74.75, 32.50' LT.
 CONSTRUCT TYPE 1 INLET (L=6'-4", W=6'-4") *
 OVER EXIST. 15" SMS PIPE, SEE DETAILS, SHEET 32.
 TOP ELEV.=96.21
 FL EXIST. 15" IN (W)=92.97
 FL EXIST. 15" OUT (E)=92.97

SMS LINE NO. 1
 SEE SHEET 21.

CL STA. 35+65.60, 33.62' LT.=
 SMS LINE NO. 2 STA. 0+00.00
 OF EXISTING SMS MAINLINE AND PIPE FLOWERS.
 CONNECT TO MANHOLE AND PIPE FLOWERS.
 RE-SHAPE INVERT AS REQUIRED.
 FL 15" IN (W)=93.08
 FL EXIST. 12" OUT (S)=93.08
 FL EXIST. 15" OUT (E)=92.98

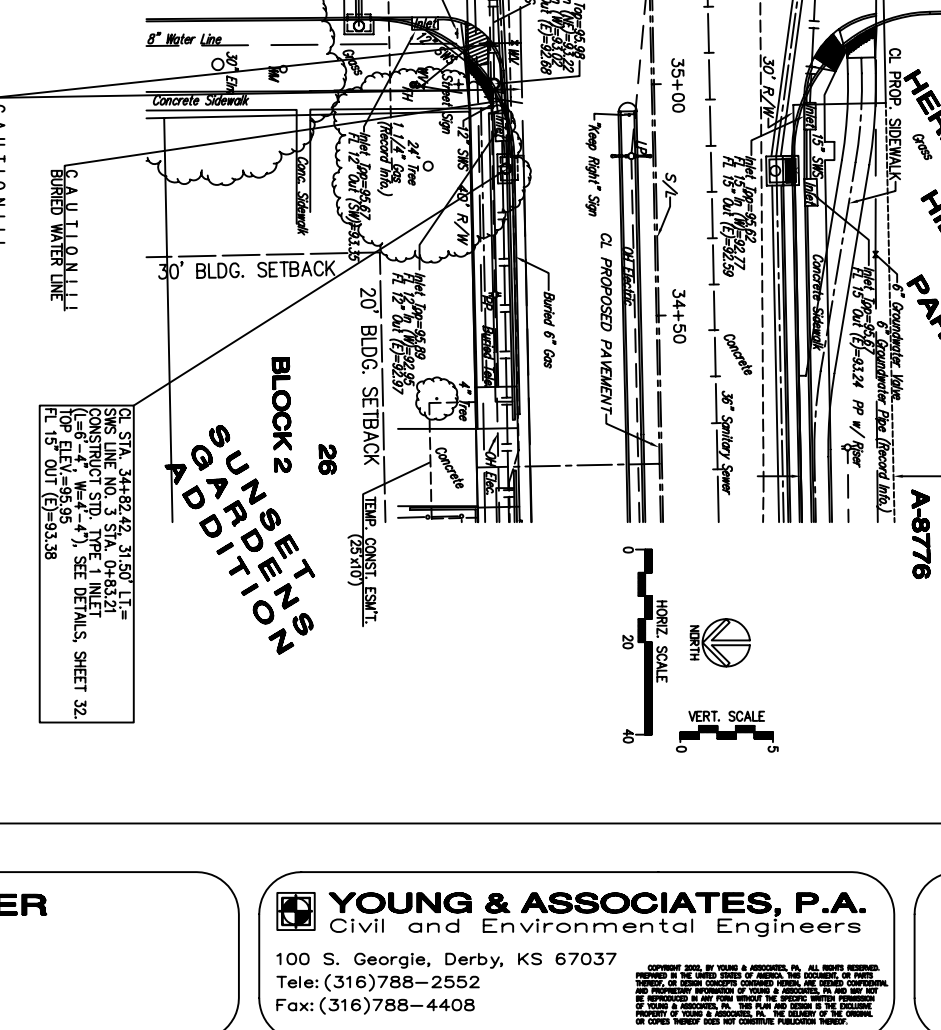
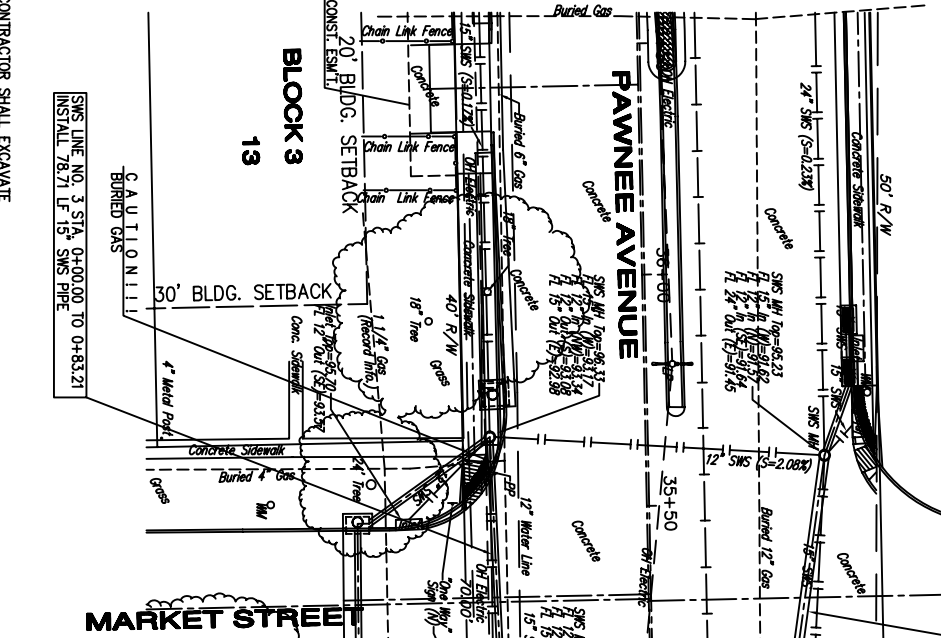
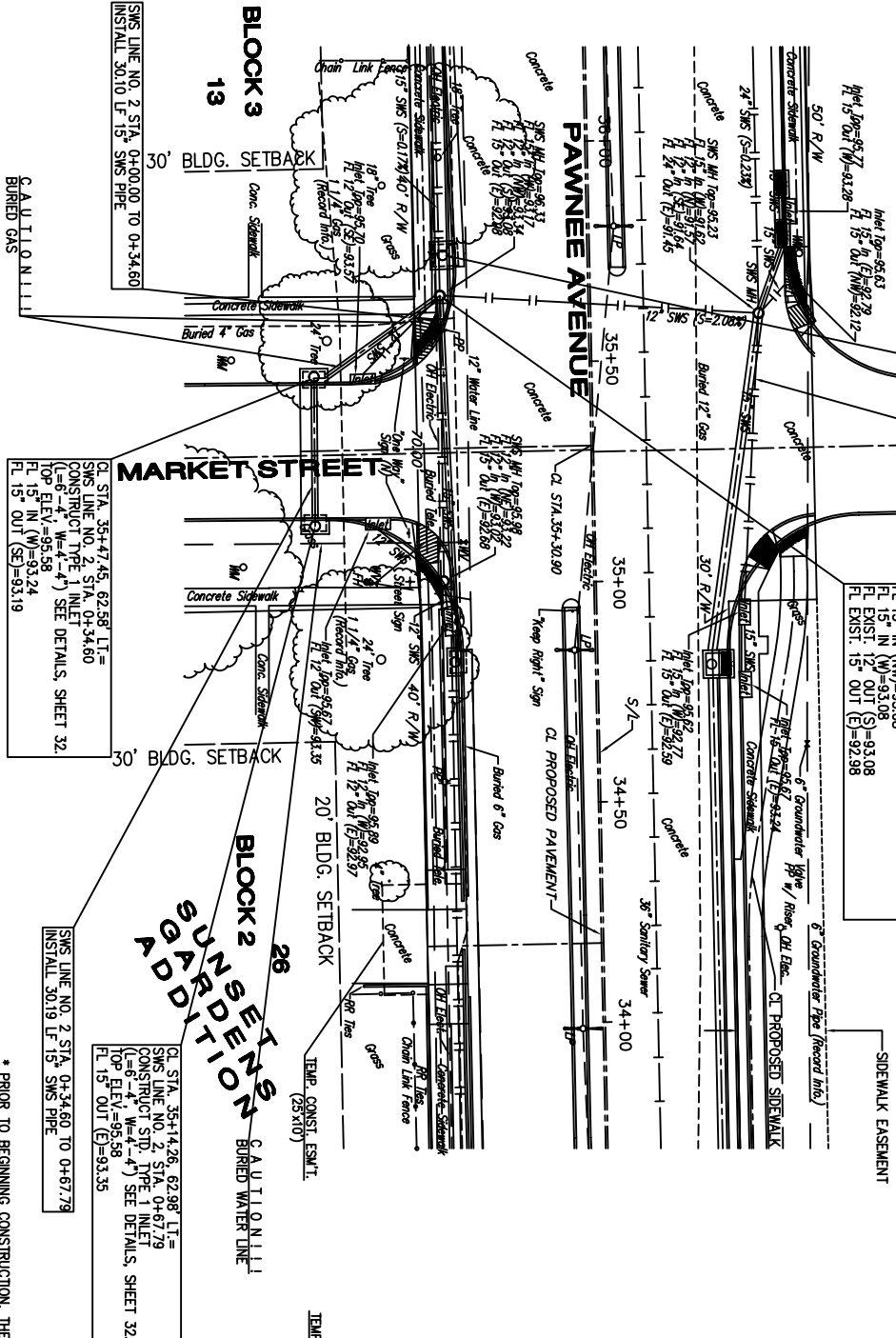
A-8776
 HERMAN HILL
 PARK
 SIDEWALK EASEMENT

SMS LINE NO. 1
 SEE SHEET 21.

CL STA. 34+82.42, 31.50' LT.=
 SMS LINE NO. 3 STA. 0+83.21
 CONSTRUCT TYPE 1 INLET
 (L=6'-4", W=4'-4") SEE DETAILS, SHEET 32.
 TOP ELEV.=95.96
 FL 15" OUT (E)=93.38

CL STA. 34+82.42, 31.50' LT.=
 SMS LINE NO. 3 STA. 0+83.21
 CONSTRUCT TYPE 1 INLET
 (L=6'-4", W=4'-4") SEE DETAILS, SHEET 32.
 TOP ELEV.=95.96
 FL 15" OUT (E)=93.38

CL STA. 34+82.42, 31.50' LT.=
 SMS LINE NO. 3 STA. 0+83.21
 CONSTRUCT TYPE 1 INLET
 (L=6'-4", W=4'-4") SEE DETAILS, SHEET 32.
 TOP ELEV.=95.96
 FL 15" OUT (E)=93.38



* PRIOR TO BEGINNING CONSTRUCTION, THE CONTRACTOR SHALL EXCAVATE THE EXISTING 12" SMS PIPE TO VERIFY ITS HORIZONTAL AND VERTICAL LOCATION. NECESSARY PLAN MODIFICATIONS CAN BE MADE. ANY ADDITIONAL LABOR OR MATERIALS NECESSARY TO COMPLETE THE CONNECTION SHALL BE CONSIDERED SUBSIDIARY TO THE PROJECT.

PIPE LENGTHS ARE MEASURED FROM INSIDE FACE OF STRUCTURE TO INSIDE FACE OF STRUCTURE.

CAUTION!!!
 BURIED GAS
 BURIED WATER LINE

CAUTION!!!
 BURIED GAS
 BURIED WATER LINE

CAUTION!!!
 BURIED GAS
 BURIED WATER LINE

STATION	PIPE TYPE	DIAMETER	LENGTH	INVERT ELEV.	OUTLET ELEV.
34+00	12" SMS	12"	15'	93.08	92.97
34+15	12" SMS	12"	15'	93.08	92.97
34+30	12" SMS	12"	15'	93.08	92.97
34+45	12" SMS	12"	15'	93.08	92.97
34+60	12" SMS	12"	15'	93.08	92.97
34+75	12" SMS	12"	15'	93.08	92.97
34+90	12" SMS	12"	15'	93.08	92.97
35+05	12" SMS	12"	15'	93.08	92.97
35+20	12" SMS	12"	15'	93.08	92.97
35+35	12" SMS	12"	15'	93.08	92.97
35+50	12" SMS	12"	15'	93.08	92.97
35+65	12" SMS	12"	10'	93.08	92.97
35+75	12" SMS	12"	0'	93.08	92.97

STORMWATER SEWER LINE NO. 2 & 3 PLAN / PROFILE

Paving & Storm Sewer Improvements
 City of Wichita
 Sedgwick County, Kansas

scale: as noted
 drawn by: dds
 checked by: cry
 date: Mar. 2006
 P/N: 04-179
 revisions:

YOUNG & ASSOCIATES, P.A.
 Civil and Environmental Engineers

100 S. Georgie, Derby, KS 67037
 Tel: (316)788-2552
 Fax: (316)788-4408

GOVERNMENT USE: BY YOUNG & ASSOCIATES, P.A. ALL RIGHTS RESERVED. THIS DRAWING IS THE PROPERTY OF YOUNG & ASSOCIATES, P.A. AND IS NOT TO BE REPRODUCED OR TRANSMITTED IN ANY FORM OR BY ANY MEANS, ELECTRONIC OR MECHANICAL, INCLUDING PHOTOCOPYING, RECORDING, OR BY ANY INFORMATION STORAGE AND RETRIEVAL SYSTEM, WITHOUT THE WRITTEN PERMISSION OF YOUNG & ASSOCIATES, P.A. THE CITY OF WICHITA AND SEDGWICK COUNTY, KANSAS, ARE NOT RESPONSIBLE FOR THE ACCURACY OF THE INFORMATION PROVIDED IN THIS DRAWING. THE CITY OF WICHITA AND SEDGWICK COUNTY, KANSAS, ARE NOT RESPONSIBLE FOR THE ACCURACY OF THE INFORMATION PROVIDED IN THIS DRAWING.

Sheet No.
 29 of 78