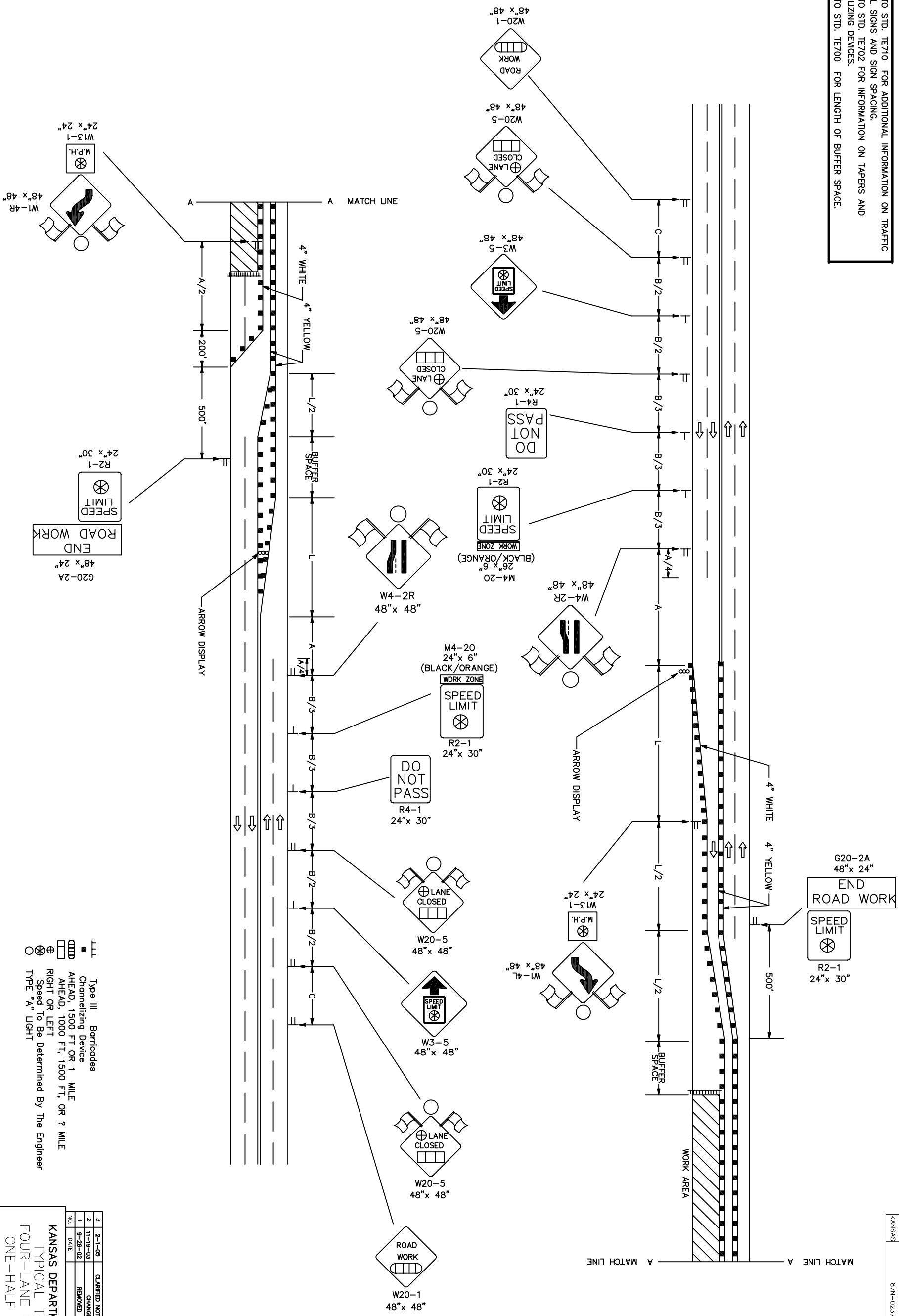


REFER TO STD. TET710 FOR ADDITIONAL INFORMATION ON TRAFFIC CONTROL SIGNS AND SIGN SPACING.  
 REFER TO STD. TET702 FOR INFORMATION ON TAPERS AND CHANNELIZING DEVICES.  
 REFER TO STD. TET700 FOR LENGTH OF BUFFER SPACE.



- ▬▬ Type III Barricades
- ▬ Channelizing Device
- ▬▬ AHEAD, 1500 FT OR 1 MILE
- ▬▬ AHEAD, 1000 FT, 1500 FT, OR ? MILE
- ⊕ RIGHT OR LEFT
- ⊕ Speed To Be Determined By The Engineer
- TYPE "A" LIGHT

STATE	PROJECT NO.	YEAR	SHEET NO.	TOTAL SHEETS
KANSAS	87N-0237-01	2006	57	78

3	2-1-05	QUANTRIED NOTES, UPDATED WARNING SIGNS	B.H.	A.A.A.
2	11-16-03	CHANGED BORDER	B.H.	S.A.B.
1	9-26-02	REMOVED G20-1 SIGNS	M.H.	S.A.B.
		REVISIONS	BT	APP'D.

KANSAS DEPARTMENT OF TRANSPORTATION  
 TYPICAL TRAFFIC CONTROL  
 FOUR-LANE UNDIVIDED HIGHWAY  
 ONE-HALF ROADWAY CLOSED

TE7748  
 9/1/00

ENVA APPROVAL	2-1-2005	APP'D	Anthony A. Andrade
DESIGNED	BAH	TRACED	
DESIGN	BAH	TRACED	
DESIGN	BAH	TRACED	