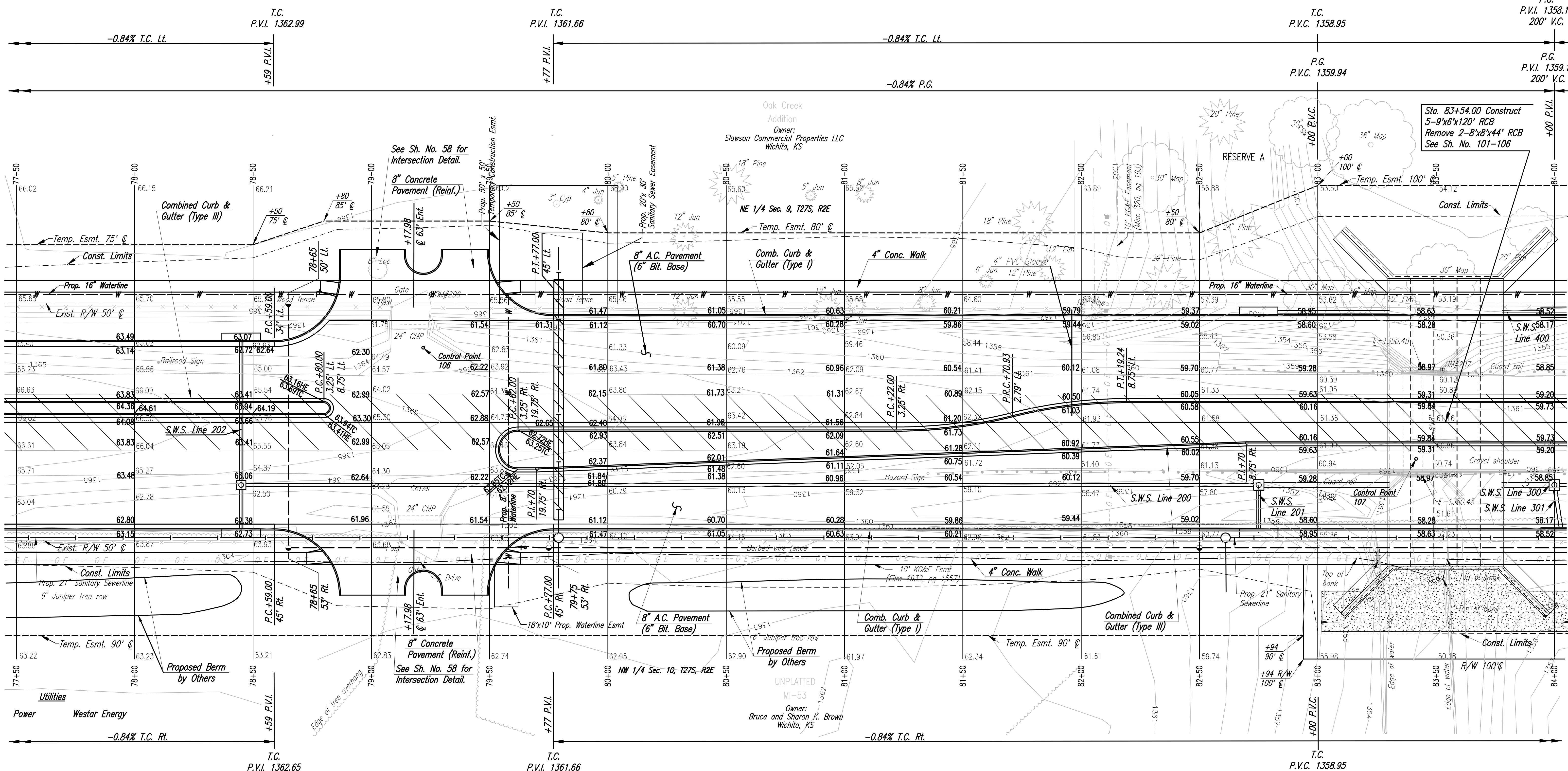


Scale: 1"=20'

P.G.
P.V.I. 1358.11
200' V.C.

P.G.
P.V.I. 1359.10
200' V.C.



Sta. 83+54.00 Construct
5'-9"x6"x120" RCB
Remove 2'-8"x8"x44" RCB
See Sh. No. 101-106

REMOVAL OF EXISTING STRUCTURES*		
STATION	SIDE	ITEM
77+50	Lt	159 LF Wood Fence
77+50	Rt	163 LF Barbed Wire Fence
78+10	Lt	Sign
79+09	Lt	Gate
79+13	Rt	Gate
79+06	Lt	24"x23" CMP
79+07	Rt	24"x24" CMP
79+25	Lt	475 LF Wood Fence

REMOVAL OF EXISTING STRUCTURES*		
STATION	SIDE	ITEM
79+30	Rt	470 LF Barbed Wire Fence
81+35	Rt	Sign
81+38	Rt	262 LF Guard Rail
82+58	Lt	142 LF Guard Rail
83+36	Cln	2'-8"x8"x45" RCB
83+36	Lt	Culvert
83+36	Rt	Culvert

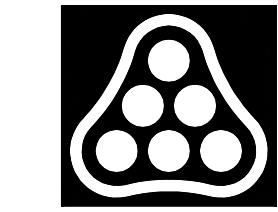
* For Information Only

BM #206 T Post 5' W. of North Gate Post Field Entrance on West Side of Greenwich Rd., North of R.R. Tracks and S. R.C.B. Inlet. 54' Lt. Sta. 79+26 Elev.=1365.87

See Sh. No. 39, 40, 41, 42 & 43 for Storm Sewer.

Note: Elevations shown along Curb & Gutter are to High Edge and Top of Curb

BM #207 Chis. π on Top of Conc. Headwall N.W. Corner R.C.B. under Greenwich Rd. 1650+-' S. of 21st N. 22' Lt. Sta. 83+53 Elev.=1360.07



No.	Revision	By	Date
GREENWICH ROAD PLAN STA. 77+50 TO 84+00 JAMES L. ARMOUR, P.E.—CITY ENGINEER CITY OF WICHITA PROJECT NO. 472-84004 Professional Engineering Consultants, P.A. 303 S. TOPKA • WICHITA, KANSAS 67202 316-262-2691 • FAX 316-262-3003			
Designed by	JPM, JGP	Job No.	04219
Drawn by	JGP, RJM	Date	AUGUST, 2004
			Sht. 11 of 215

1/2004/04219/PLAN/075810.DWG 10-30-2004 7:56:57 LAST REV: 12-02-2004 BY: RJM