

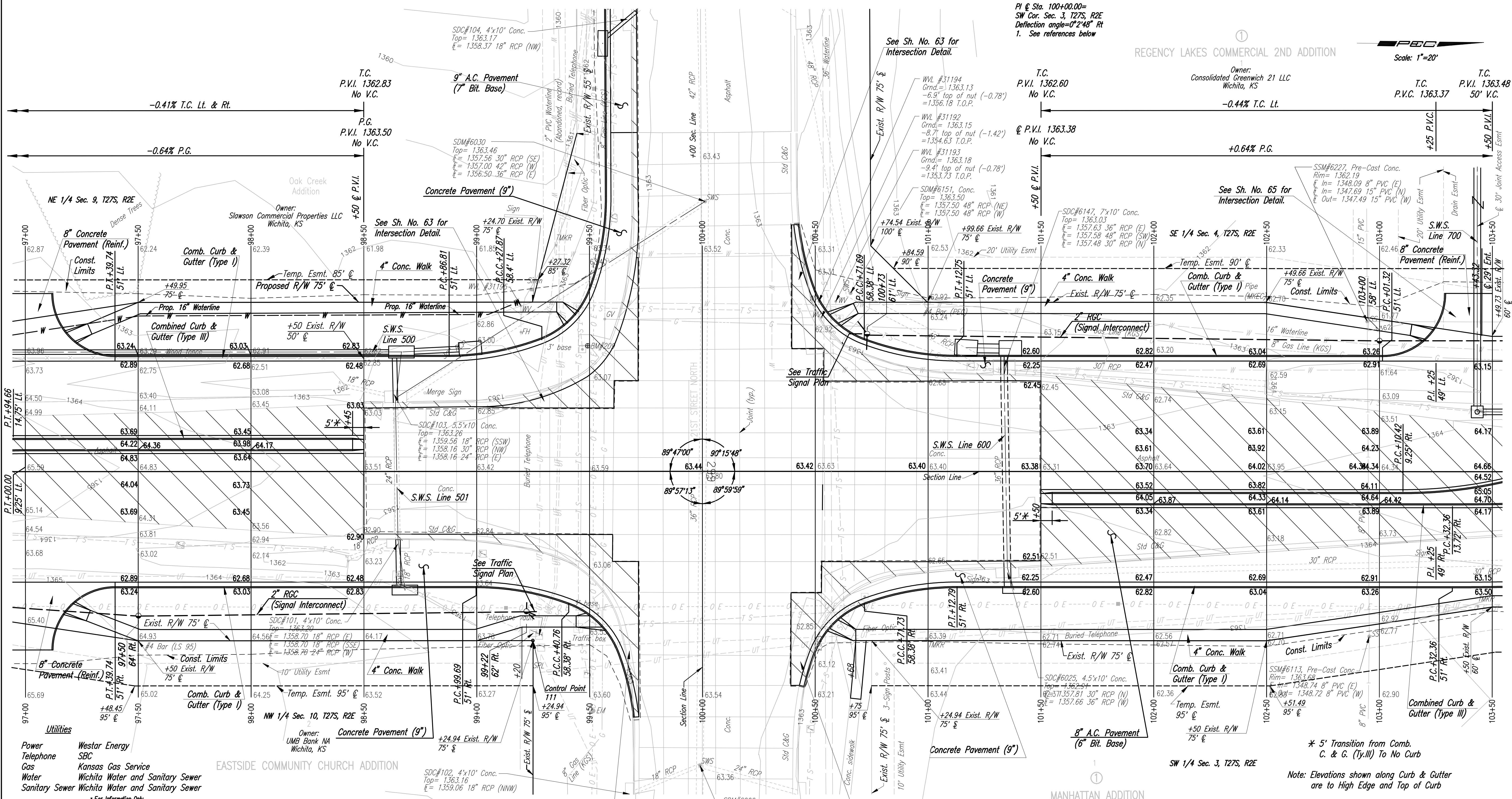
REGENCY LAKES COMMERCIAL 2ND ADDITION

Scale: 1"=20'

PI @ Sta. 100+00.00=
SW Cor. Sec. 3, T27S, R2E
Deflection angle=0°2'48" Rt
1. See references below

Owner:
Consolidated Greenk 21 LLC
Wichita, KS

T.C. P.V.I. 1363.37
T.C. P.V.I. 1363.48
50' V.C.



REMOVAL OF EXISTING STRUCTURES*

STATION	SIDE	ITEM
97+00	Lt	138 LF Wood Fence
98+39	Lt	18"x21" RCP
98+42	Rt	18"x18" RCP
98+65	Lt	Inlet
98+65	Rt	Inlet
98+77	Lt	Sign
101+00	Lt	Sign

REMOVAL OF EXISTING STRUCTURES*

STATION	SIDE	ITEM
101+24	Rt	Sign
101+34	Lt	Inlet
101+34	Rt	Inlet
101+38	Lt	30"x11 1/4" RCP
101+40	Rt	30"x21 1/2" RCP
103+23	Rt	Sign

- S 1/4 Cor. Sec. 3, T27S, R2E
1. Fnd. #5 Bar with Forgy Survey Cap
 2. N 1,699,827.9232 E 1,688,859.1462
 3. 2,641.95' Rt. or East @ Sta. 100+00.00 NE 89°59'59"
 4. Chis. + on Top of Curb in Median of 21st N. 14.15' N
 5. Chis. + on Top of Curb in Median of 21st N. 23.90' W
 6. Chis. + on Top of Curb in Median of 21st N.
 7. Chis. + on Conc. Base Traffic Lights 89.44' NE
113.43' NW
73.60' SW
75.93 SE

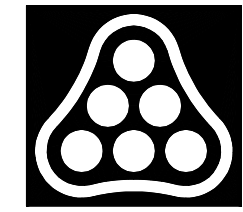
- S 1/4 Cor. Sec. 4, T27S, R2E
1. Fnd. #5 Bar with M.K.E. Survey Cap in @ 21st N. with Aerial Photo Target
 2. N 1,699,749.1173 E 1,683,570.4813
 3. 2,647.32' Lt. or West @ Sta. 100+00.00 NW 90°15'48"
 4. Chis. + on Conc. Base Traffic Lights 89.44' NE
49.82' N
 5. Fnd. #5 Bar with Armstrong Survey Cap
 6. Chis. + on South East Corner of Curb Inlet 45.86' NW
 7. Chis. + on Conc. Base Traffic Lights 73.60' SW
49.72' SW
70.84' SE
 8. Mag Nail on East Face of P.P.

STATION	OFFSET	UTILITY	EXISTING ELEVATION	PROPOSED ELEVATION	ADJUSTMENT
102+95	67' Lt.	SS MH	1362.19	1363.46	1.27

* 5' Transition from Comb. C. & G. (Type III) To No Curb

Note: Elevations shown along Curb & Gutter are to High Edge and Top of Curb

See Sh. No. 21 for 21st St.
See Sh. No. 44, 45 & 46 for Storm Sewer.



GREENWICH ROAD PLAN
STA. 97+00 TO 103+50
JAMES L. ARMOUR, P.E. CITY ENGINEER
CITY OF WICHITA PROJECT NO. 472-84004
Professional Engineering Consultants, P.A.
303 S. TOPKA • WICHITA, KANSAS 67202
316-262-2691 • FAX 316-262-3003

No.	Revision	By	Date

Designed by JPM, JGP Job No. 04219
Drawn by JGP, RJM Date AUGUST, 2004 Sht. 14 of 215

DSNR: 1/2004/04219/PLAN0700R.DWG 10-30-2004 7:56:57 LAST REV: 12-02-2004 BY: RJM
 OPER: JGP SCALE: 1"=20'