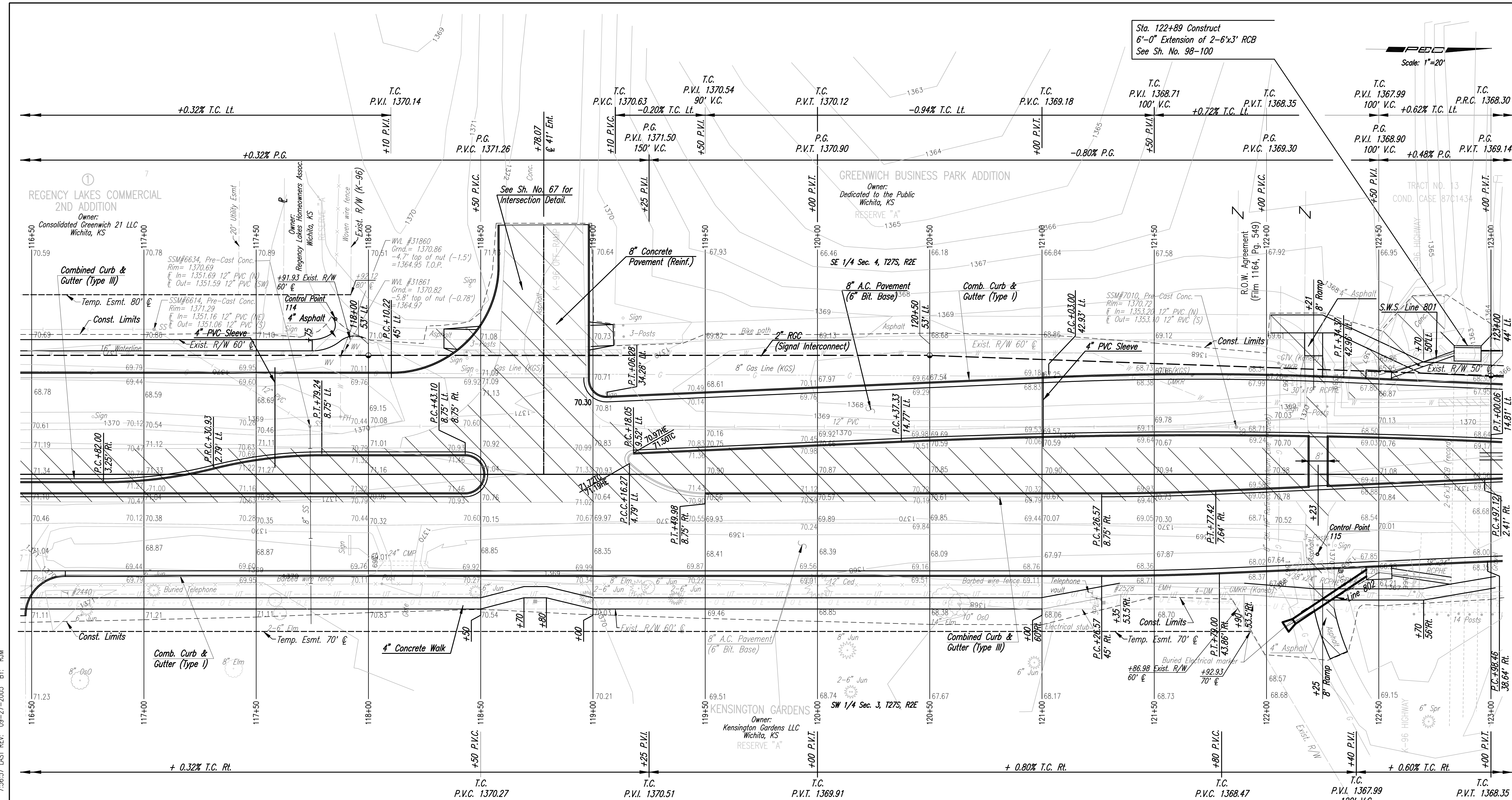


Sta. 122+89 Construct  
6'-0" Extension of 2-6"x3' RCB  
See Sh. No. 98-100

Scale: 1"=20'



\* For Information Only

REMOVAL OF EXISTING STRUCTURES*		
STATION	SIDE	ITEM
116+50	Rt	24"x27" CMP
116+50	Rt	156 LF Barbed Wire Fence
116+77	Lt	Sign
117+56	Lt	Sign
117+91	Rt	Sign
118+03	Rt	24"x24" CMP
118+06	Rt	Gate
118+24	Rt	275 LF Barbed Wire Fence

REMOVAL OF EXISTING STRUCTURES*		
STATION	SIDE	ITEM
118+43	Lt	Sign
118+43	Lt	3-Posts
118+48	Lt	Sign
119+54	Lt	Sign
122+11	Lt	30"x19"x22" RCPHE
122+14	Rt	38"x24"x19" RCPHE
122+14	Lt	Sign
122+16	Lt	Post

REMOVAL OF EXISTING STRUCTURES*		
STATION	SIDE	ITEM
122+17	Rt	Post
122+22	Lt	Post
122+23	Rt	Post
122+27	Lt	Post
122+28	Rt	Post
122+30	Rt	Sign
122+77	Lt	Culvert

STATION	OFFSET	UTILITY	EXISTING ELEVATION	PROPOSED ELEVATION	ADJUSTMENT
117+74	21' Lt.	SS MH	1370.69	1370.36	0.33
121+88.5	21' Lt.	SS MH	1370.72	1368.75	-1.97

See Sh. No. 51 & 52 for Storm Sewer.

Note: Elevations shown along Curb & Gutter are to High Edge and Top of Curb

BM #212 Chis. on Wing Wall at S.W. Corner of R.C.B. under Bike Path on South Side of K-96 Ramp E. Bound to Greenwich Rd. 300' Lt. @ Sta. 117+70. Elev.=1367.29

BM #213 Chis. on North End of R.C.P. under Bike Path on E. Side of Greenwich Rd. and South Side of K-96 Overpass. 43' Rt. @ Sta. 122+33. Elev.=1368.97

OPER: JGP SCALE: 1/2004/04219/PLAN11650.DGN 10-30-2004 7:56:57 LAST REV: 09-27-2005 BY: RJM  
 DSNR:

- Utilities**
- Power Westar Energy
  - Telephone SBC
  - Gas Kansas Gas Service
  - Gas KANEB Pipe Line Co.
  - Water Wichita Water and Sanitary Sewer
  - Sanitary Sewer Wichita Water and Sanitary Sewer

GREENWICH ROAD  
PLAN  
STA. 116+50 TO 123+00  
JAMES L. ARMOUR, P.E.—CITY ENGINEER  
CITY OF WICHITA PROJECT NO. 472-84004  
**Professional Engineering Consultants, P.A.**  
303 S. TOPKA • WICHITA, KANSAS 67202  
316-262-2691 • FAX 316-262-3003

Designed by	JPM, JGP	Job No.	04219
Drawn by	JGP, RJM	Date	AUGUST, 2004

Sht. 17 of 215