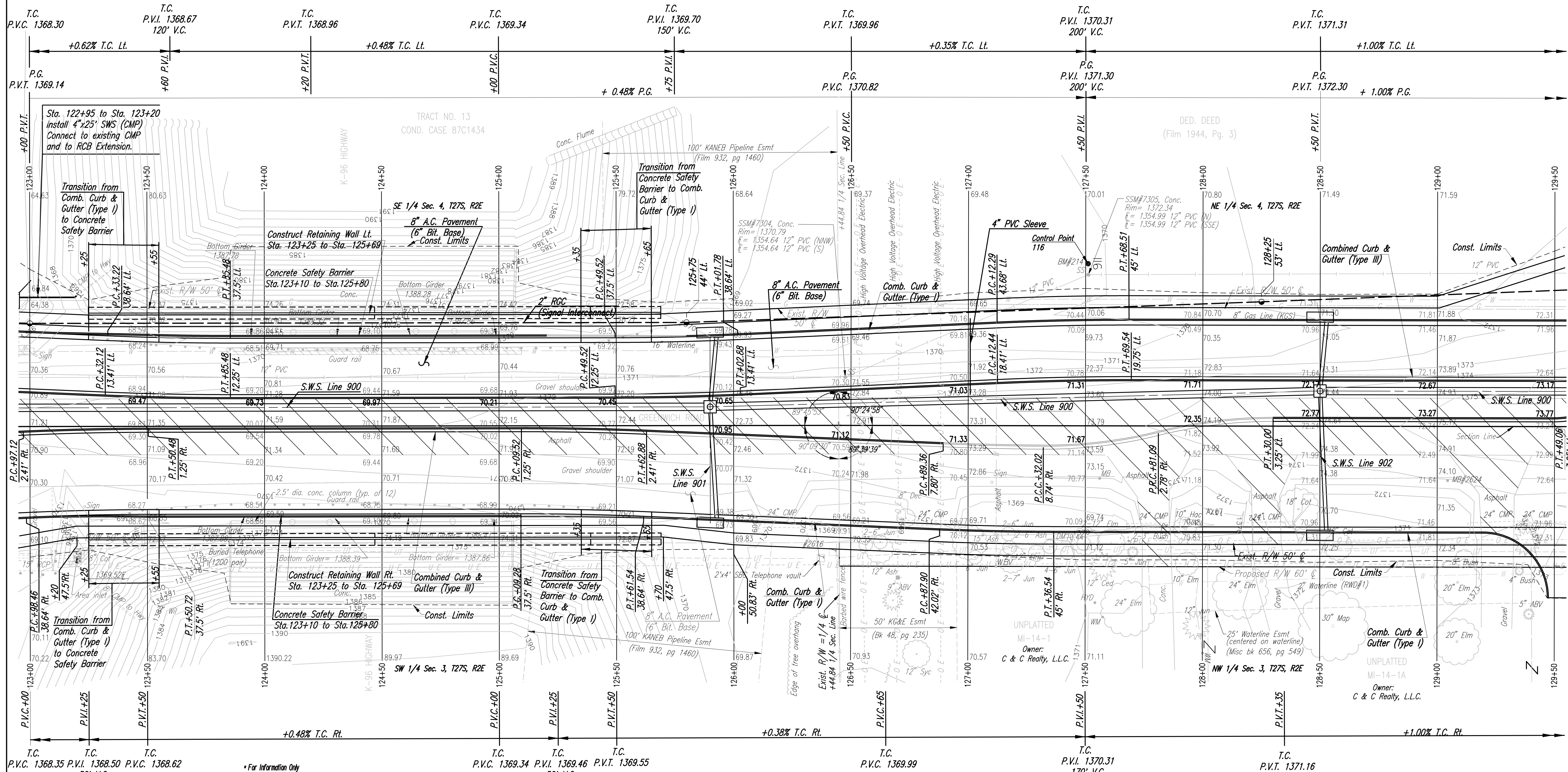


PI @ Sta. 126+44.838=  
 W Cor. Sec. 3, T27S, R2E  
 Deflection angle=0°10'51" Rt  
 1. See references below

Scale: 1"=20'



DSNR: OPER: JGP SCALE: 1"=20' DATE: 10-28-2004 15:23:42 LAST REV: 9-27-2005 BY: RJM  
 I:\2004\04219\PLAN\12300.DGN

\* For Information Only

REMOVAL OF EXISTING STRUCTURES*		
STATION	SIDE	ITEM
123+02	Lf	Sign
123+17	Rt	245 LF Guard Rail
123+23	Rt	Sign
123+26	Lf	252 LF Guard Rail
126+09	Rt	24"x24" CMP
126+71	Rt	24"x25" CMP
127+10	Rt	Sign

REMOVAL OF EXISTING STRUCTURES*		
STATION	SIDE	ITEM
127+56	Rt	Mailbox
127+67	Rt	24"x24" CMP
128+16	Rt	24"x24" CMP
129+04	Rt	Mailbox
129+13	Rt	24"x24" CMP
129+42	Rt	24"x8" CMP

STATION	OFFSET	UTILITY	EXISTING ELEVATION	PROPOSED ELEVATION	ADJUSTMENT
126+48	21' Lt.	SS MH	1370.79	1370.13	0.66

- W 1/4 Cor. Sec. 3, T27S, R2E
1. Fnd. 3/4" Iron Pipe
  2. N 1,702,439.2575 E 1,686,184.0892
  3. @ Sta. 126+44.84
  4. 60' D Nail in Top North End of Guard Rail Post
  5. Mag Nail in Top North End of Guard Rail Post
  6. Chis. + in East Rim Sanitary Sewer Manhole
  7. Line of Highline Poles
- 80.42' SW  
 89.65' SSE  
 19.97' WNW  
 25.00+ - N
- 87.50' ENE  
 9.85' N  
 21.75' WNW  
 24.22' S

See Sh. No. 52, 53 & 55 for Storm Sewer.

Note: Elevations shown along Curb & Gutter are to High Edge and Top of Curb

BM #214 T-Post 4" West of SS MH, about 250' North of K-96 and 70' West of Greenwich Rd.  
 69' Lt. @ Sta. 127+51. Elev.=1363.27

- Utilities
- Power: Westar Energy
  - Telephone: SBC
  - Gas: Kansas Gas Service
  - Water 1: Wichita Water and Sanitary Sewer
  - Water 2: Sedgwick County RWD No. 1
  - Sanitary Sewer: Wichita Water and Sanitary Sewer

**GREENWICH ROAD PLAN**

STA. 123+00 TO 129+50

JAMES L. ARMOUR, P.E.—CITY ENGINEER  
 CITY OF WICHITA PROJECT NO. 472-84004

**Professional Engineering Consultants, P.A.**  
 303 S. TOPKA • WICHITA, KANSAS 67202  
 316-262-2691 • FAX 316-262-3003

Designed by	JPM, JGP	Job No.	04219
Drawn by	JGP, RJM	Date	AUGUST, 2004

Sht. 18 of 215