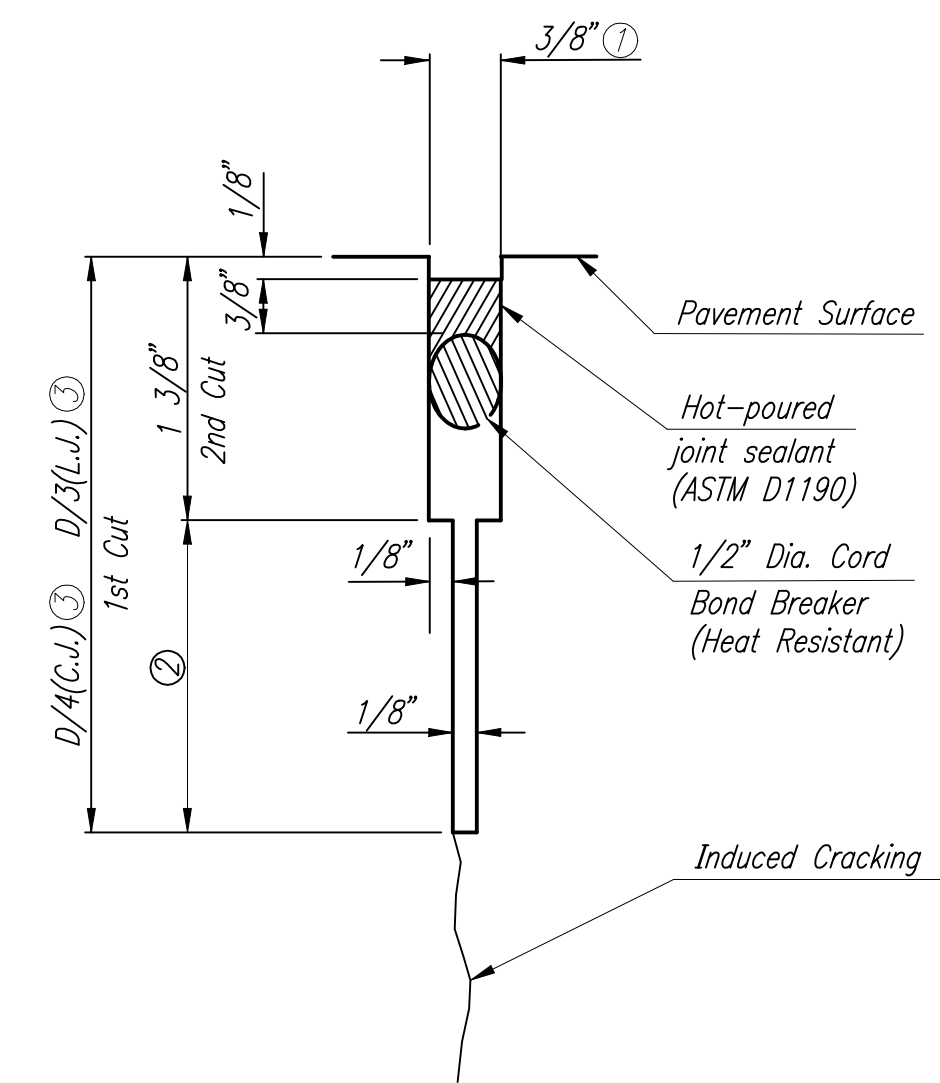
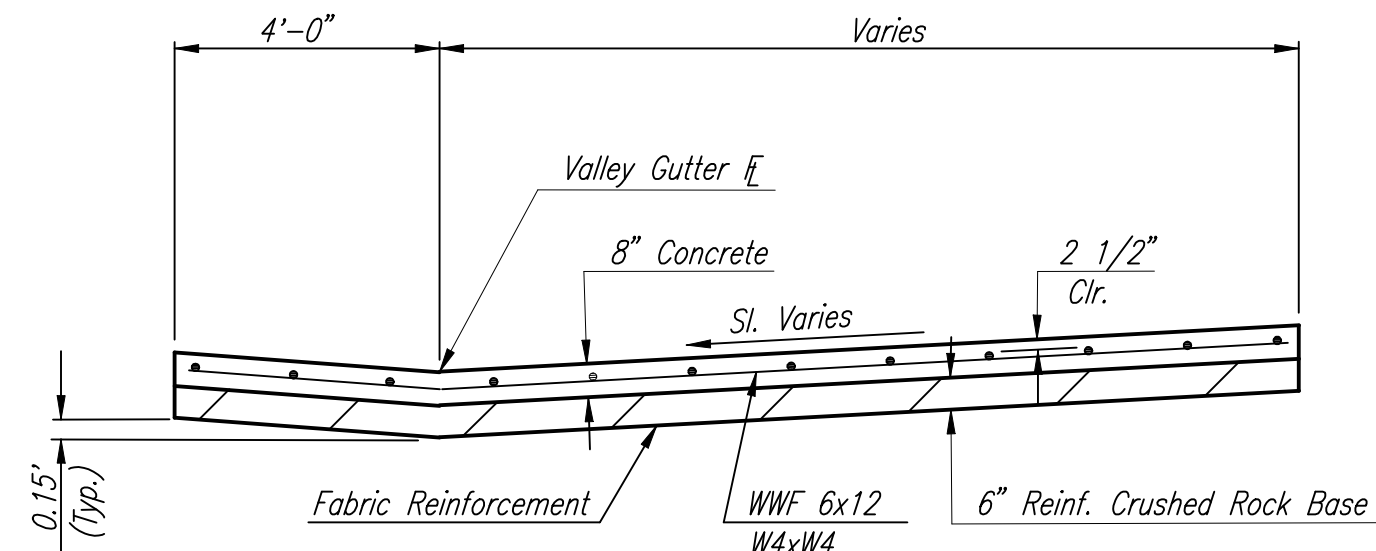


**WING REINFORCING DETAIL**  
NOTE: OMIT WIRE FABRIC REINFORCING IN THIS SECTION.



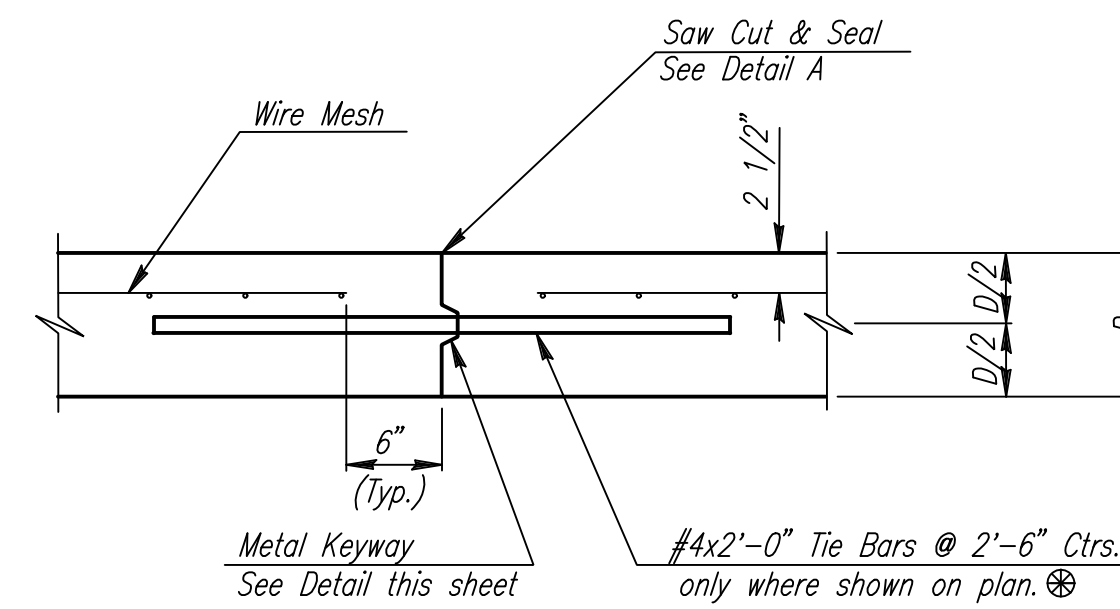
**DETAIL A**

- ① To be accomplished in 2 cuts for Longitudinal Joints and Contraction Joints. Initial cut to be 1/8" wide.
- ② Eliminate bottom of cut when metal keyway is used as part of Longitudinal or Transverse Construction Joint and at Doweled Construction Joint Locations.
- ③ 1 1/2" Minimum

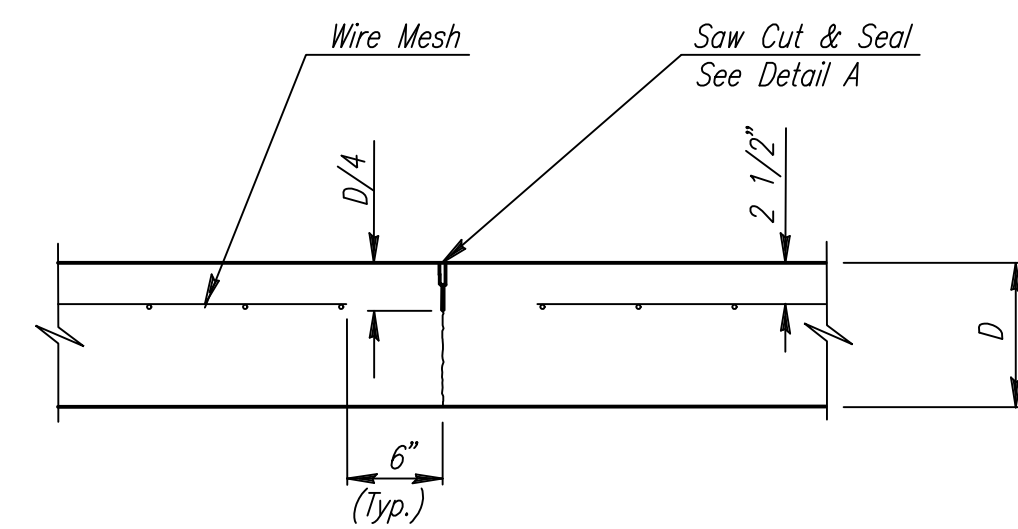


**SECTION A-A**

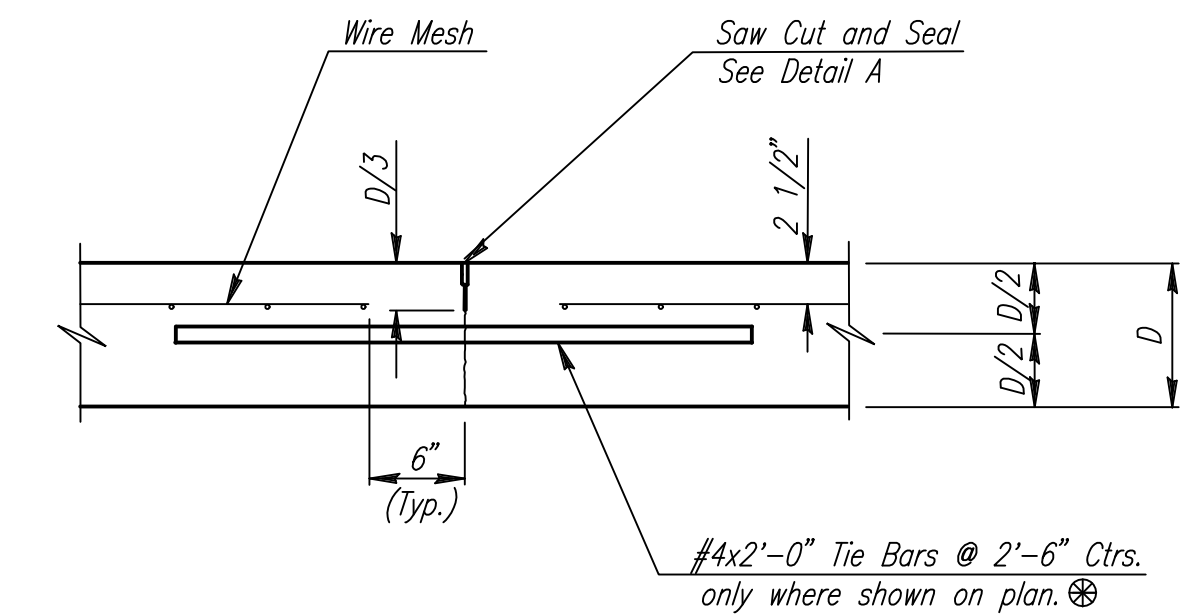
NOTE: OMIT REINFORCING MESH AT ALL JOINTS  
NOTE: ALL CONCRETE VALLEY GUTTER REINFORCEMENT SHALL BE ADEQUATELY SUPPORTED BY BAR CHAIRS IN THE REQUIRED POSITION UNLESS APPROVED OTHERWISE BY THE ENGINEER.



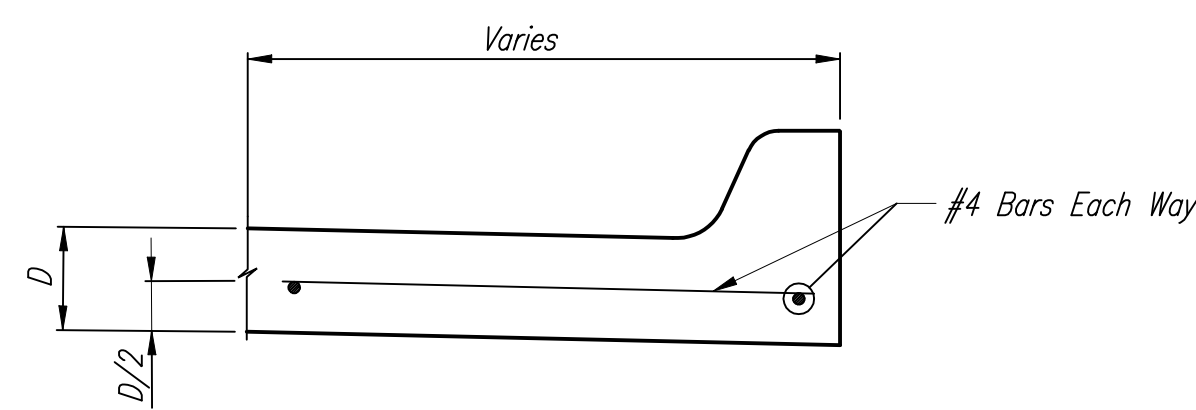
**LONGITUDINAL CONSTRUCTION JOINT DETAIL  
REINFORCED PAVEMENT  
(TRANSVERSE SECTION)  
(ALTERNATE L.J.)**



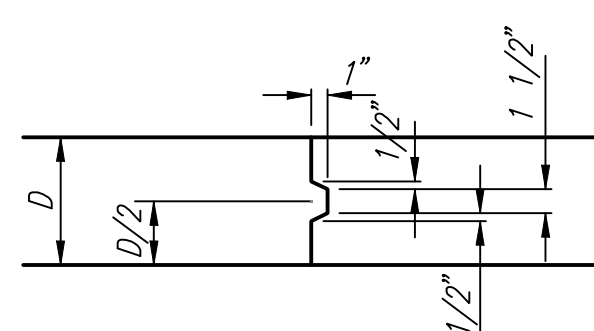
**CONTRACTION JOINT DETAIL  
REINFORCED PAVEMENT  
(C.J.)**



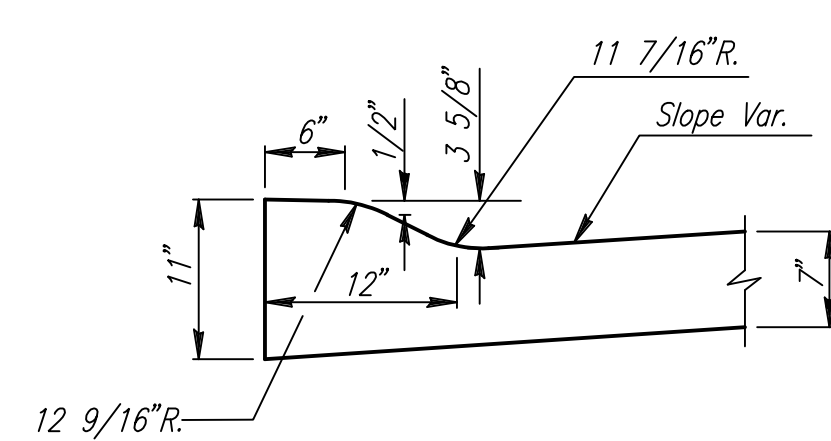
**LONGITUDINAL JOINT DETAIL  
REINFORCED PAVEMENT  
(TRANSVERSE SECTION)**



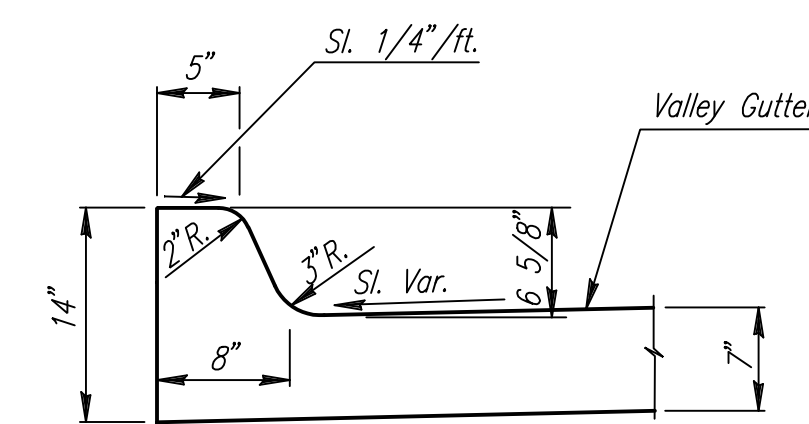
**SECTION C-C**



**KEYWAY DETAIL**

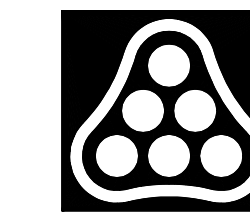


**DETAIL B  
(ROLL-TYPE CURB)(3 5/8")**



**DETAIL C  
(STANDARD CURB)(6 5/8")**

**MONOLITHIC EDGE CURB**



No.	Revision	By	Date
<b>GREENWICH ROAD SPECIAL ENTRANCES FULL HEIGHT CURB</b> JAMES L. ARMOUR, P.E.—CITY ENGINEER CITY OF WICHITA PROJECT NO. 472-84004 <b>Professional Engineering Consultants, P.A.</b> 303 S. TOPEKA • WICHITA, KANSAS 67202 316-262-2691 • FAX 316-262-3003			
Designed by	Job No. 04219	Sht. 71 of 215	
Drawn by	Date AUGUST, 2004		