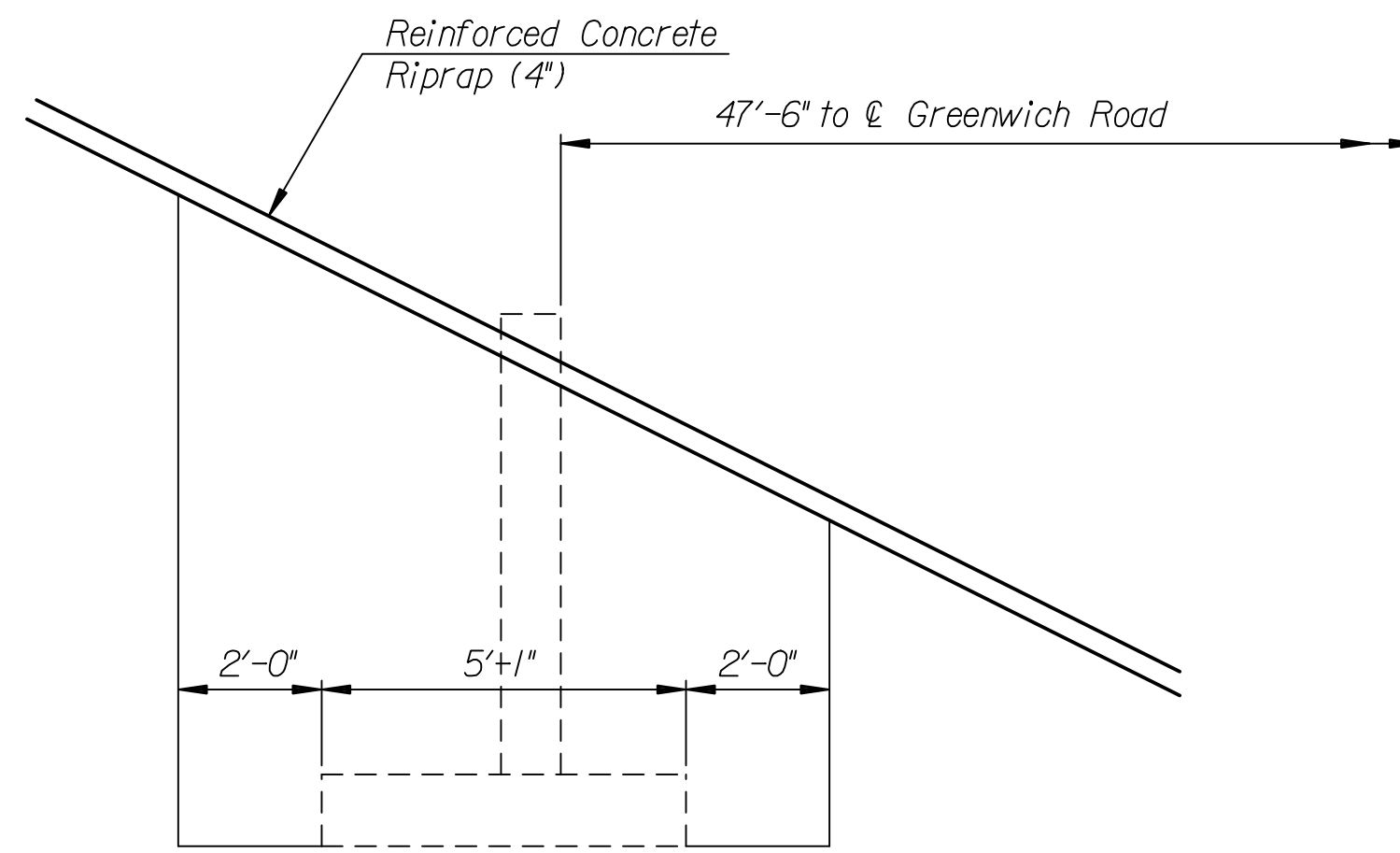
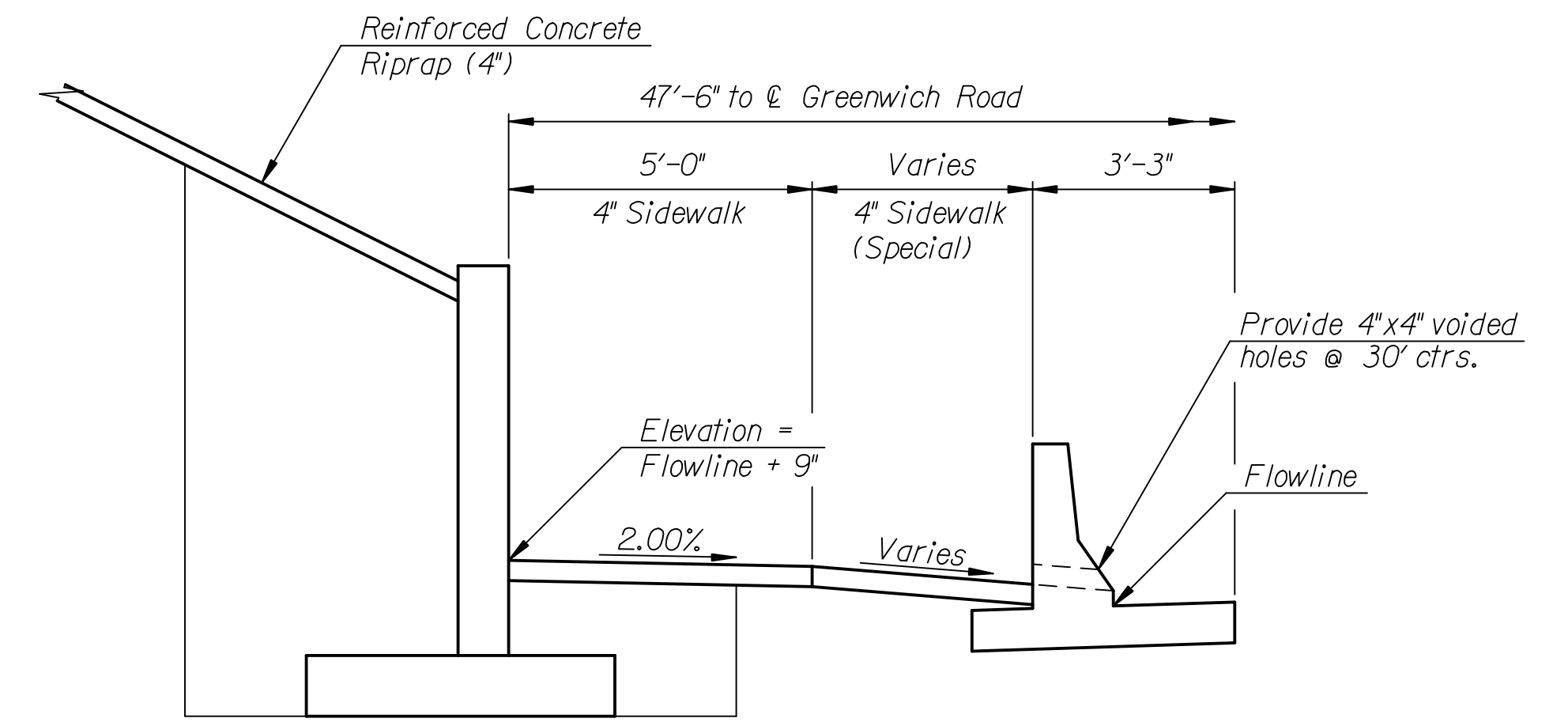


DSNR: OPER: RAS SCALE: I:/2004/04219/final/04219-000_C-C-OBSECTIONS(EP)(V8).DGN 8-13-2005 15:23:42 LAST REV: 9-7-2005 BY: ras



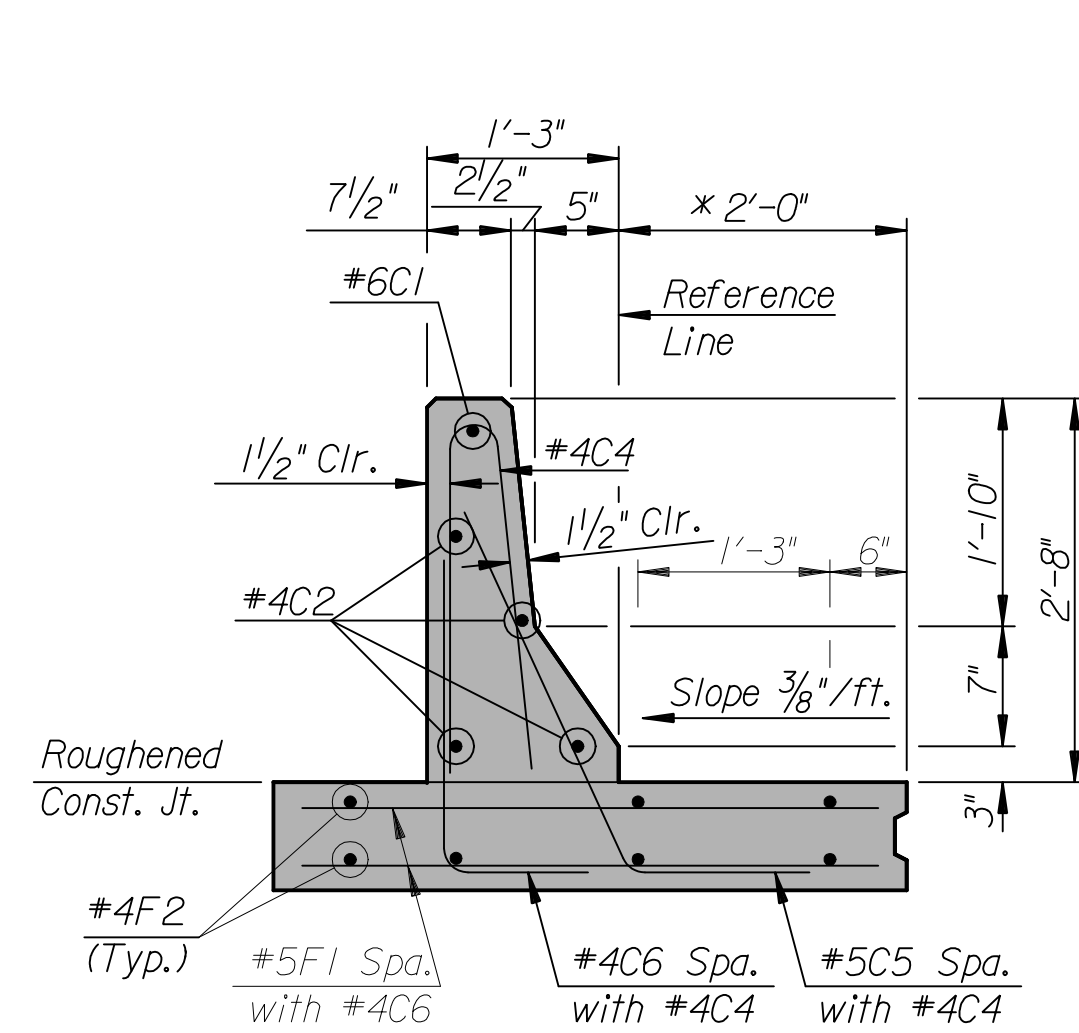
TYPICAL RETAINING WALL/BARRIER ELEVATION

Lt. and Rt. ϵ Greenwich Road
Excavation Limits

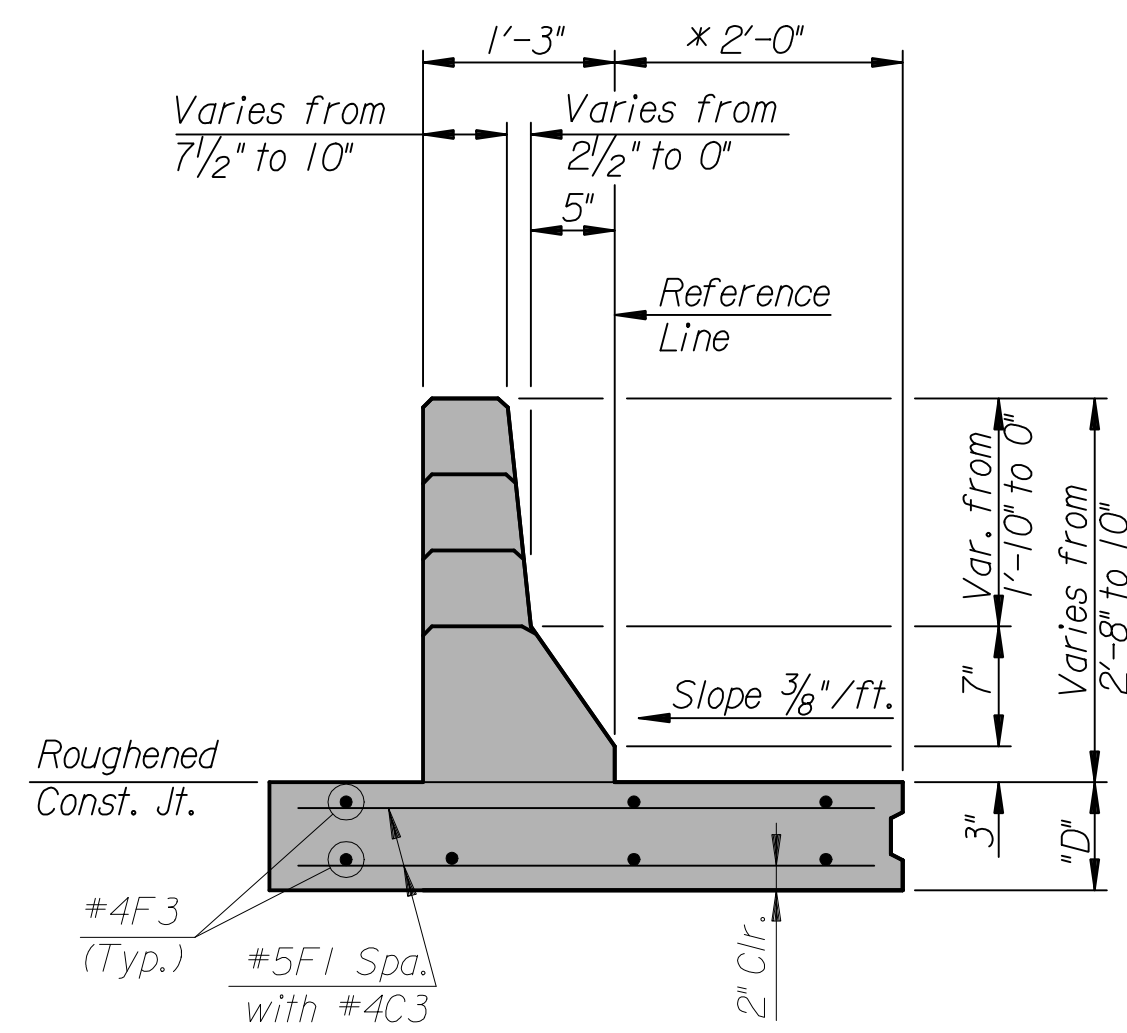


TYPICAL RETAINING WALL/BARRIER ELEVATION

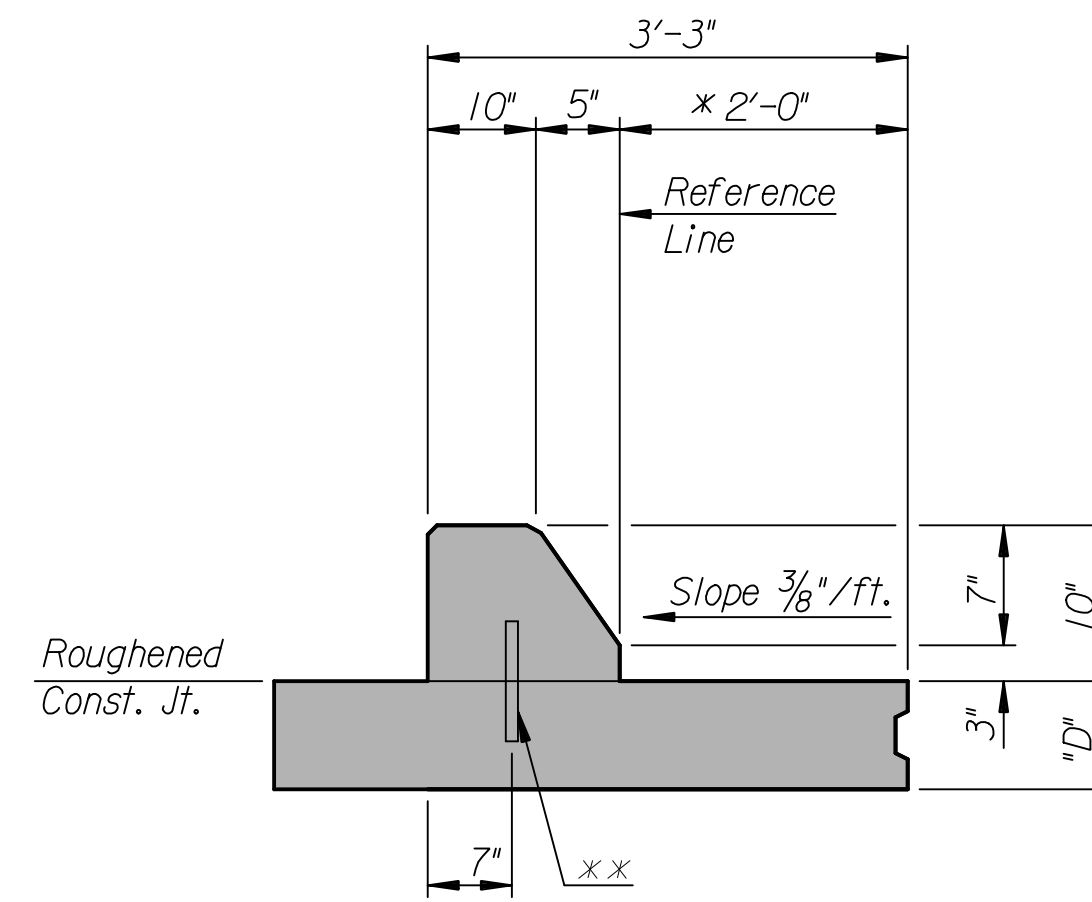
Lt. and Rt. ϵ Greenwich Road



SECTION A-A

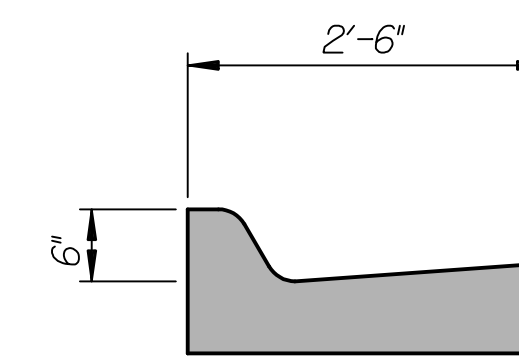


SECTION B-B



SECTION C-C

Note: "D"=10"



SECTION D-D

Special ϵ Modification required (See Paving Plan)

General Notes:

The Concrete Safety Barrier shall be constructed of Concrete (Grade 4.0) (AE) and Reinforcing Steel complying to A.S.T.M. Designation A-615 Grade 60. All Bar clearances shall be 1/2" unless otherwise noted.

The Exposed Faces of the Barrier shall be Grooved with a 3/4" Chamfer Strip at Contraction Joint locations. Where adjacent to Asphalt Pavement, Joints shall be spaced as shown (15'-0" Intervals). Where adjacent to Concrete Pavement, Contraction Joints shall Match those in the adjacent Pavement.

The Bid Item "Concrete Safety Barrier(Type II)(Special)" shall be measured per lineal foot as per Plan. The amount of completed and accepted work, measured by lineal foot, shall be paid for at the Contract Unit Price Bid for the various types of "Concrete Safety Barrier". This Price shall be considered full compensation for furnishing all material, equipment and labor necessary to complete the work.

- * Slope to match adjacent pavement.
- ** Optional Construction Joint from Section C-C to Section D-D with #8x0'-10" bars at 2'-6" centers.

No.	Revision	By	Date
GREENWICH ROAD CONCRETE SAFETY BARRIER SECTIONS STA. 123+25 TO 125+65 JAMES L. ARMOUR, P.E.-CITY ENGINEER CITY OF WICHITA PROJECT NO. 472-84004 Professional Engineering Consultants, P.A. 303 S. TOPEKA • WICHITA, KANSAS 67202 316-262-2691 • FAX 316-262-3003			
Designed by	RAS	Job No.	04219
Drawn by	DRP	Date	AUGUST 2005
			Sht. 86 of 215

