

- Items: Riprap removal limits (Lt.) : ①-②-⑤-⑧-①
- Riprap replacement limits (Lt.) : ①-②-③-⑩-①
- Sidewalk(4")(Special) limits (Lt.) : ⑨-④-⑥-⑦-⑨
- Riprap removal limits (Rt.) : ⑪-⑭-⑰-⑲-⑪
- Riprap replacement limits (Rt.) : ⑪-⑫-⑱-⑲-⑪
- Sidewalk(4")(Special) limits (Rt.) : ⑬-⑮-⑯-⑱-⑬

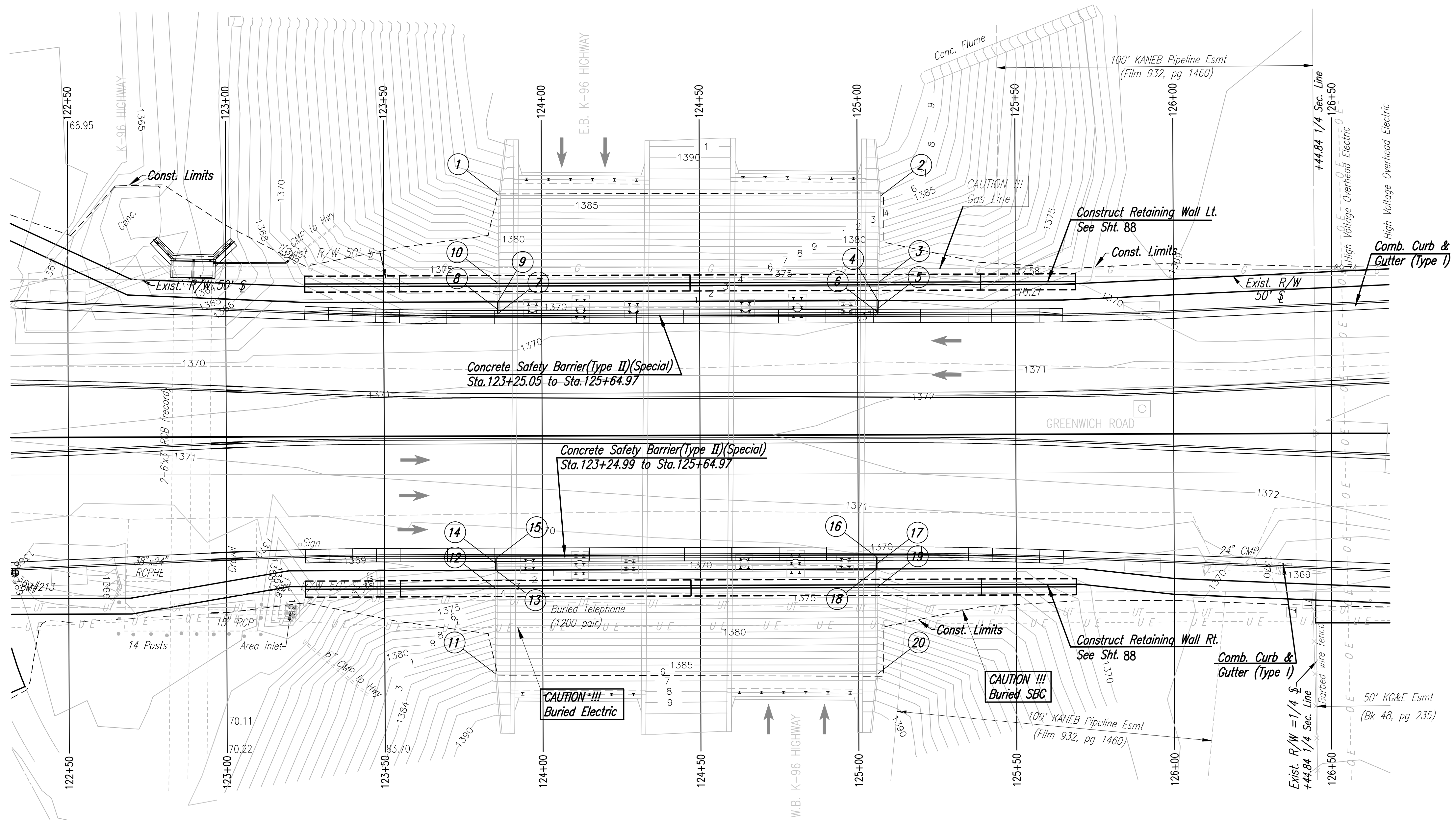


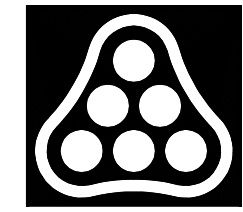
TABLE OF COORDINATES

POINT NO.	NORTH COORDINATE	EAST COORDINATE	ELEVATION	STATION	OFFSET
1	1702180.0734	1686111.1308	1386.43	123+86.59	76.22' Lt.
2	1702300.8685	1686110.2077	1386.48	125+07.39	75.62' Lt.
3	1702300.4983	1686137.5002	1373.36	125+06.68	48.33' Lt.
4	1702300.4192	1686143.3350	1369.61	125+06.52	42.50' Lt.
5	1702300.3863	1686145.7659	1369.74	125+06.46	40.07' Lt.
6	1702300.3684	1686147.0859	1369.40	125+06.43	38.75' Lt.
7	1702180.0067	1686148.6022	1368.84	123+86.06	38.75' Lt.
8	1702180.0091	1686147.2465	1369.64	123+86.07	40.11' Lt.
9	1702180.0133	1686144.8812	1369.03	123+86.11	42.50' Lt.
10	1702180.0238	1686139.0179	1373.36	123+86.19	48.33' Lt.

TABLE OF COORDINATES

POINT NO.	NORTH COORDINATE	EAST COORDINATE	ELEVATION	STATION	OFFSET
11	1702180.3412	1686262.6216	1386.32	123+84.95	75.26' Rt.
12	1702180.2259	1686235.6897	1373.56	123+85.18	48.33' Rt.
13	1702180.2009	1686229.8562	1369.03	123+85.23	42.50' Rt.
14	1702180.1917	1686227.7036	1369.54	123+85.24	40.35' Rt.
15	1702180.1849	1686226.1061	1368.82	123+85.26	38.75' Rt.
16	1702300.7560	1686224.5850	1369.40	125+05.84	38.75' Rt.
17	1702300.7761	1686226.6976	1370.04	125+05.83	40.86' Rt.
18	1702300.8095	1686228.3368	1369.61	125+05.84	42.50' Rt.
19	1702300.9284	1686234.1691	1373.56	125+05.89	48.33' Rt.
20	1702301.4847	1686261.4687	1386.33	125+06.10	75.64' Rt.

DSNR: OPER: JGP SCALE: 1"=20' DATE: 08/05/05
 I:/2004/04219/FINAL/04219-000_C-RiprapK96(EP)(V8).DGN 8-12-2005 15:23:42 LAST REV: 9-27-2005 BY: ras



No.	Revision	By	Date
GREENWICH ROAD Riprap and Retaining Wall Plan STA. 124+47 JAMES L. ARMOUR, P.E.- CITY ENGINEER CITY OF WICHITA PROJECT NO. 472-84004 Professional Engineering Consultants, P.A. 303 S. TOPEKA • WICHITA, KANSAS 67202 316-262-2691 • FAX 316-262-3003			
Designed by	RAS	Job No.	04219
Drawn by	JGP, RAS	Date	AUGUST, 2005
			Sht. 87 of 215