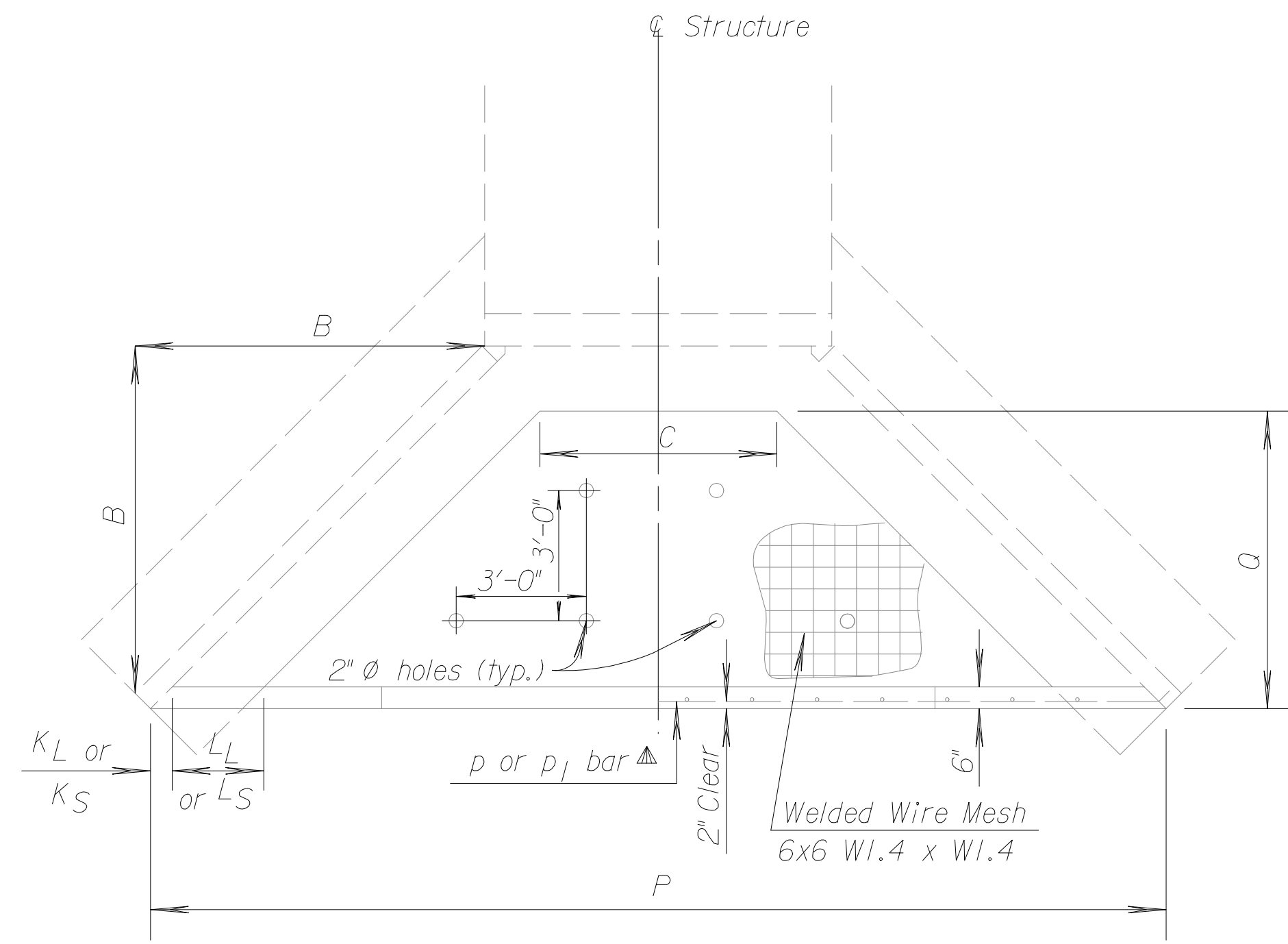


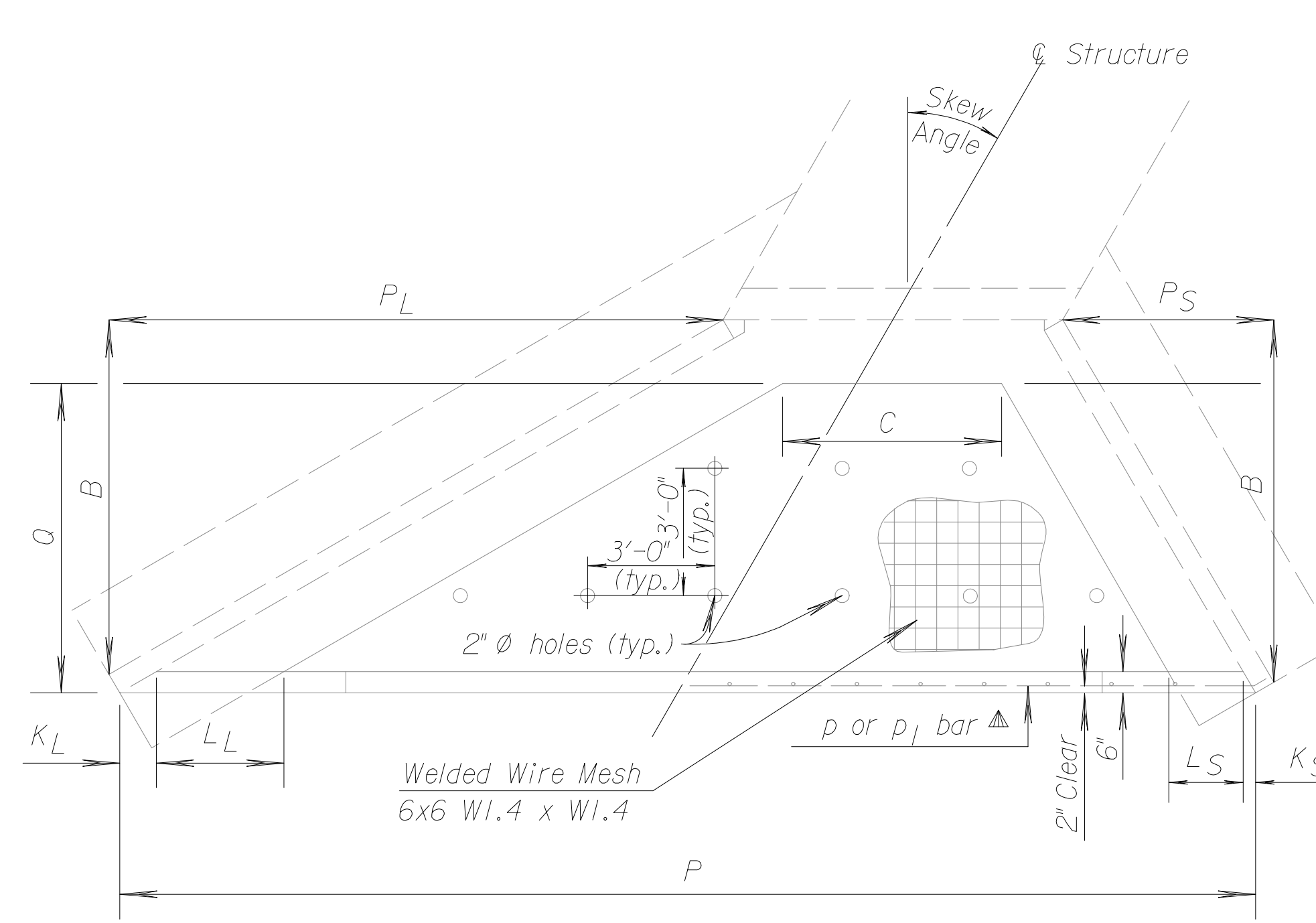
STATE	PROJECT NO.	YEAR	SHEET NO.	TOTAL SHEETS
KANSAS	472-84004	2005	92	215

GENERAL NOTE

CONCRETE: Grade 4.0 Concrete shall be used throughout. All exposed edges shall be finished with an edging tool.
 REINFORCING: All dimensions are to ℓ of bar except where noted. All reinforcing bars are No. 4. Reinforcing bars shall be Grade 60 billet steel. Minimum clearance on all reinforcement shall be 2".
 Weight of welded wire mesh is 21 lbs. per 100 sq. ft. Mesh shall be paid as pounds of reinforcing steel.
 When holes in the apron are warranted by drainage conditions they shall be constructed as directed by the Engineer.

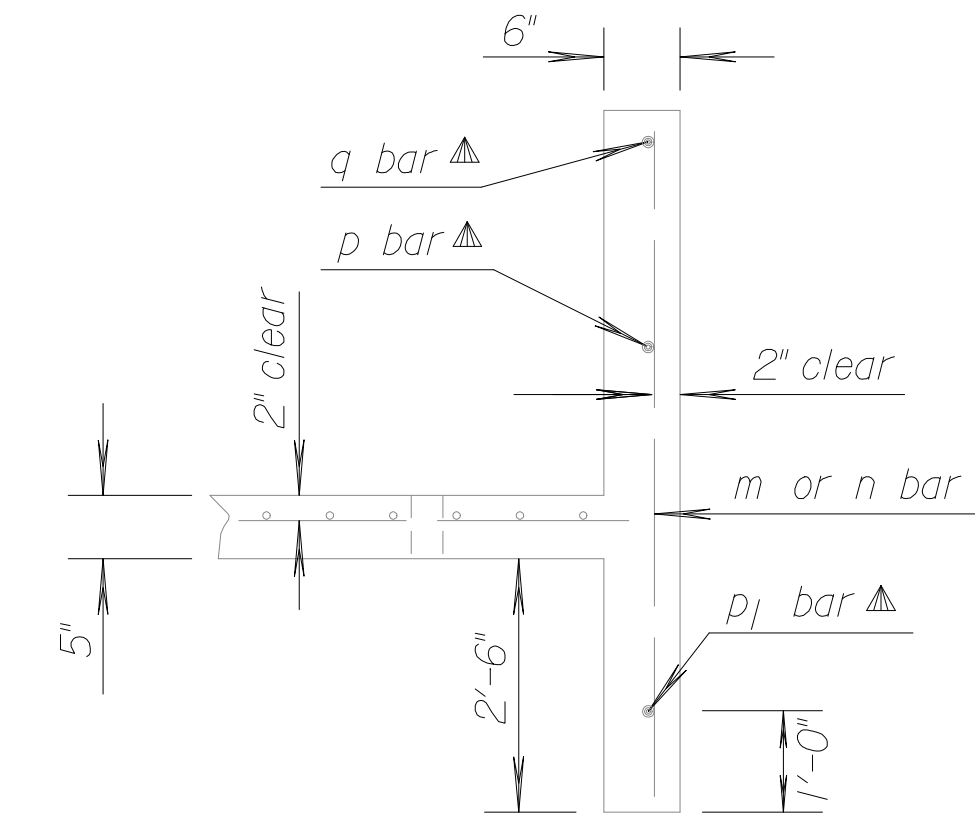


PLAN

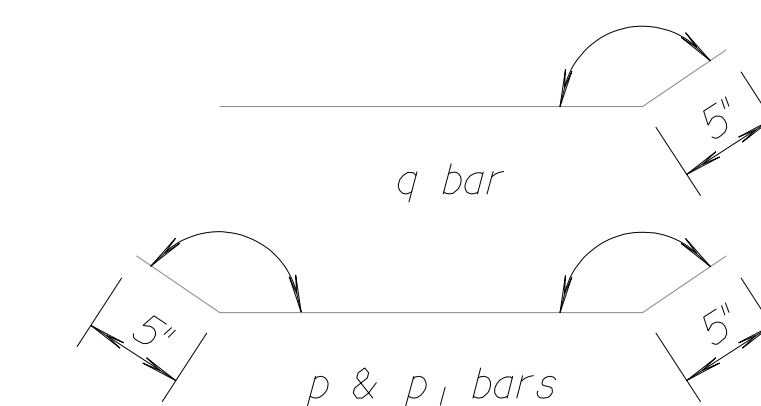


PLAN - SKEW

▲ Drill and grout p and q bars into wingwalls and p1 bar into wing footings when the soil saver end wall is constructed separately from the wingwalls. Drilling and grouting shall be Subsidiary to the bid item "Reinforcing Steel".

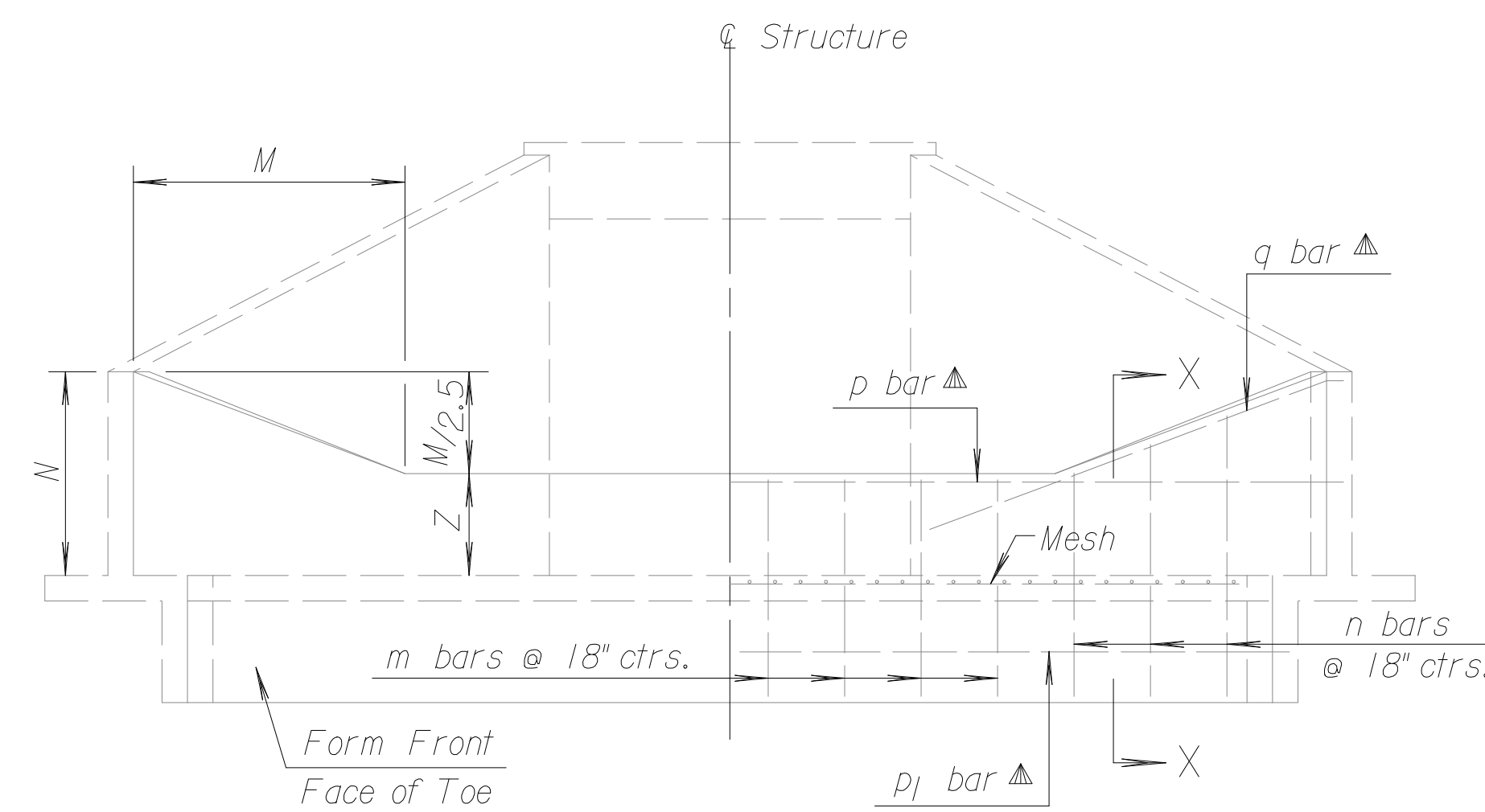


SECTION X-X

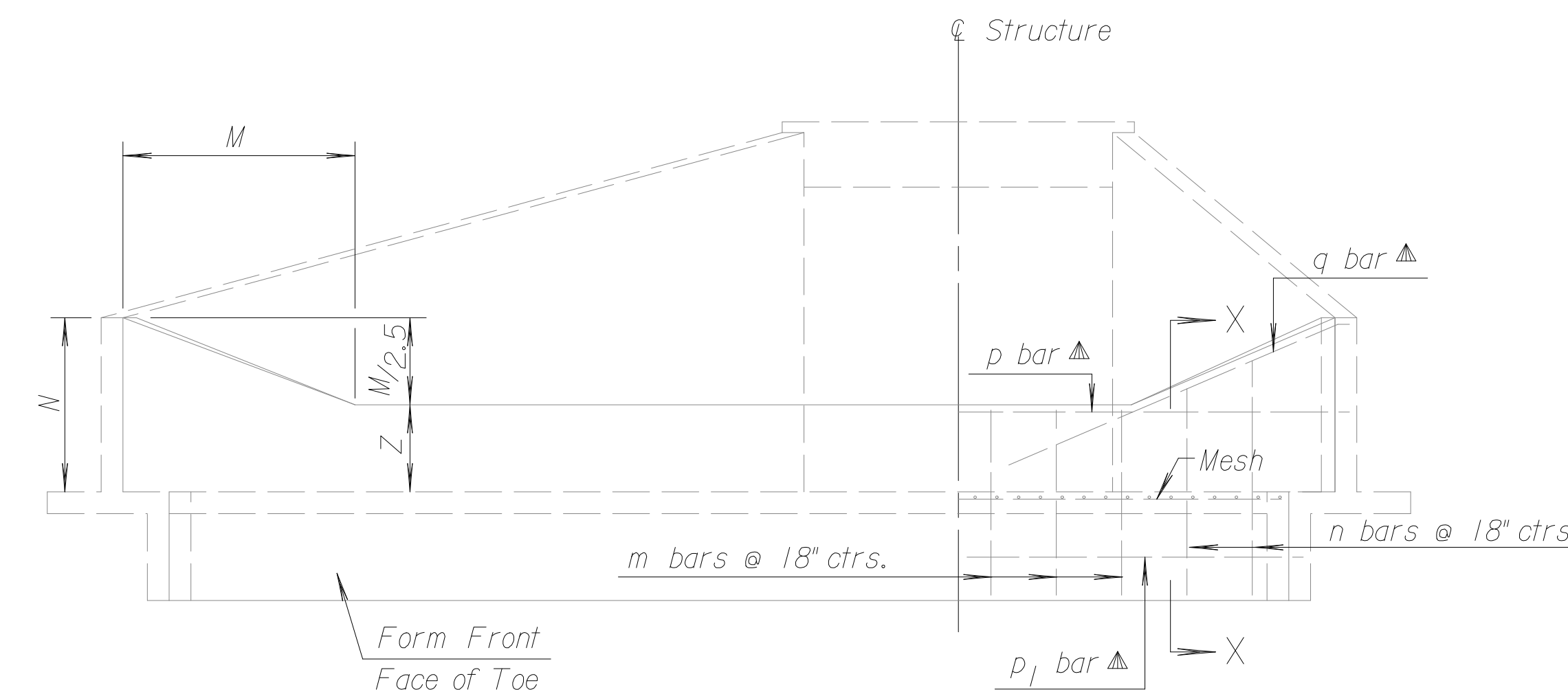


∅ Angle varies according to skew of RCB. Bars shall be field bent.

BENDING DIAGRAMS



ELEVATION AND SECTION



ELEVATION AND SECTION

SUMMARY OF SOIL SAVERS

Station	Culvert Size	Side	Z	Skew
72+56.00	4'-0" x 4'-0"	Left	3'-0"	0°

STATION	SIDE Left						Skew 0°		Z=3'-0"			
Letter	B	C	KL	KS	LL	LS	M	N	P	PL	PS	Q
Dimension	6'-9"	3'-6"	6"		1'-5"		1'-0 1/2"	3'-5"	17'-7"			5'-7"
Bar	m	n*	p	p1	q		Sq. Ft. Mesh					44
Number	10	2	1	1	2		Grade 4.0 Concrete					2.41 Cu.Yd.
Length	5'-7"	2'-11"	18'-2"	15'-4"	4'-7"		Reinf. steel					79 Lbs.

STATION	SIDE						Skew		Z=			
Letter	B	C	KL	KS	LL	LS	M	N	P	PL	PS	Q
Dimension												
Bar	m	n*	p	p1	q		Sq. Ft. Mesh					
Number							Class "AAA" Conc.					Cu.Yd.
Length							Reinf. steel					Lbs.

STATION	SIDE						Skew		Z=			
Letter	B	C	KL	KS	LL	LS	M	N	P	PL	PS	Q
Dimension												
Bar	m	n*	p	p1	q		Sq. Ft. Mesh					
Number							Class "AAA" Conc.					Cu.Yd.
Length							Reinf. steel					Lbs.

STATION	SIDE						Skew		Z=			
Letter	B	C	KL	KS	LL	LS	M	N	P	PL	PS	Q
Dimension												
Bar	m	n*	p	p1	q		Sq. Ft. Mesh					
Number							Class "AAA" Conc.					Cu.Yd.
Length							Reinf. steel					Lbs.

STATION	SIDE						Skew		Z=			
Letter	B	C	KL	KS	LL	LS	M	N	P	PL	PS	Q
Dimension												
Bar	m	n*	p	p1	q		Sq. Ft. Mesh					
Number							Class "AAA" Conc.					Cu.Yd.
Length							Reinf. steel					Lbs.

STATION	SIDE						Skew		Z=			
Letter	B	C	KL	KS	LL	LS	M	N	P	PL	PS	Q
Dimension												
Bar	m	n*	p	p1	q		Sq. Ft. Mesh					
Number							Class "AAA" Conc.					Cu.Yd.
Length							Reinf. steel					Lbs.

2				
1	08-01-00	Revised Drill & Grout Note	R.J.S.	J.O.B.
NO.	DATE	REVISIONS	BY	APP'D

KANSAS DEPARTMENT OF TRANSPORTATION

SOIL SAVER FOR R.C. CULVERTS

RD520

DESIGNED	8-23-00	APP'D.	James O. Brewer
DETAILER		QUANTITIES	TRACED Bowser
DESIGN CK.	DETAIL CK.	QUAN. CK.	TRACE CK. Seltz

Quantities include apron and soil saver end wall.

* n bars are variable, increase by increments of 7". Cut 2 each length.

Note to the Designer: See the appropriate culvert standard drawings for the required dimensions and angles.

Drawn By: KDOT Plotted: RAS 9-27-2005 File: I:\2004\04219\FINAL\04219-000.C-RD520(EKIV7).DGN