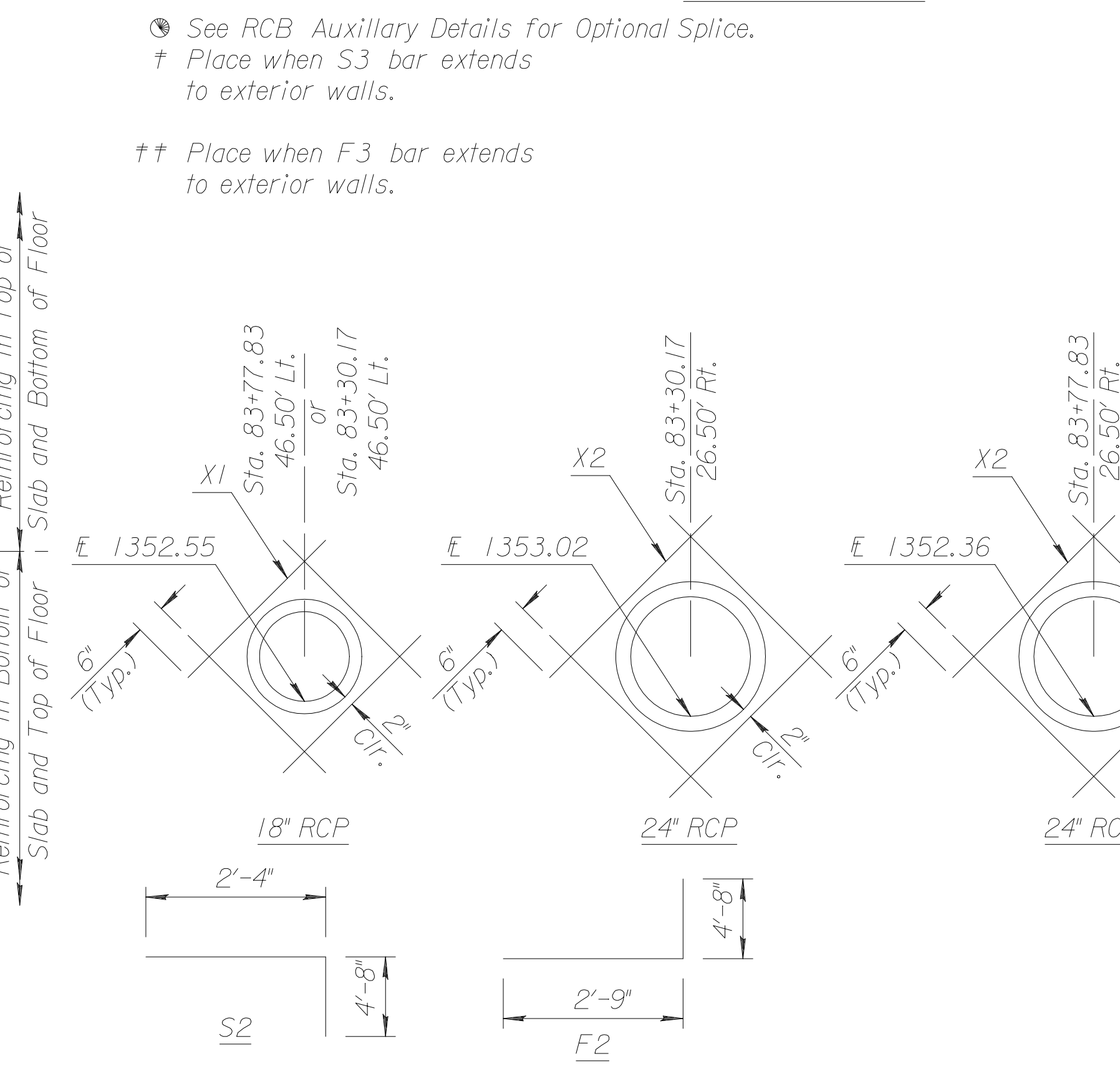
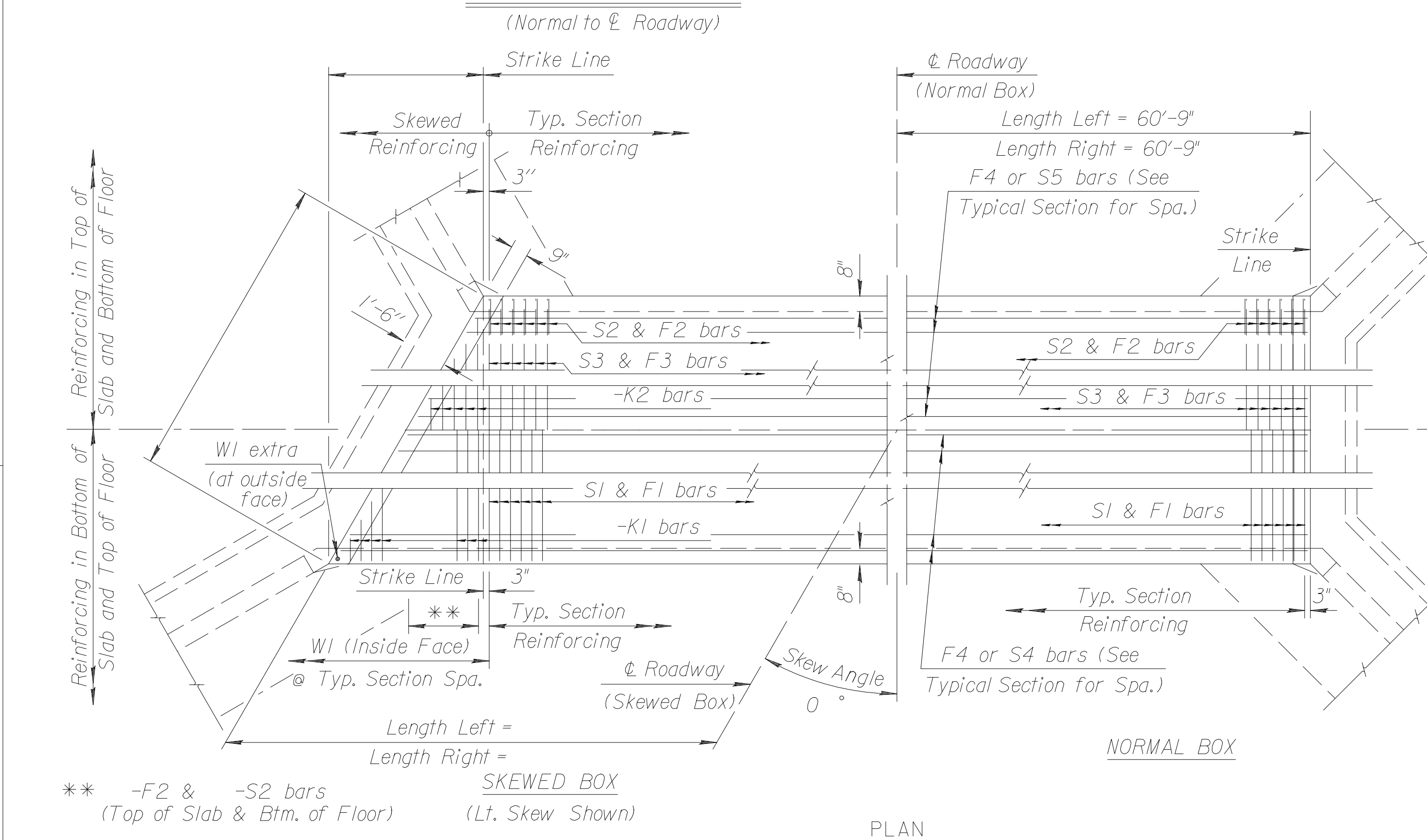
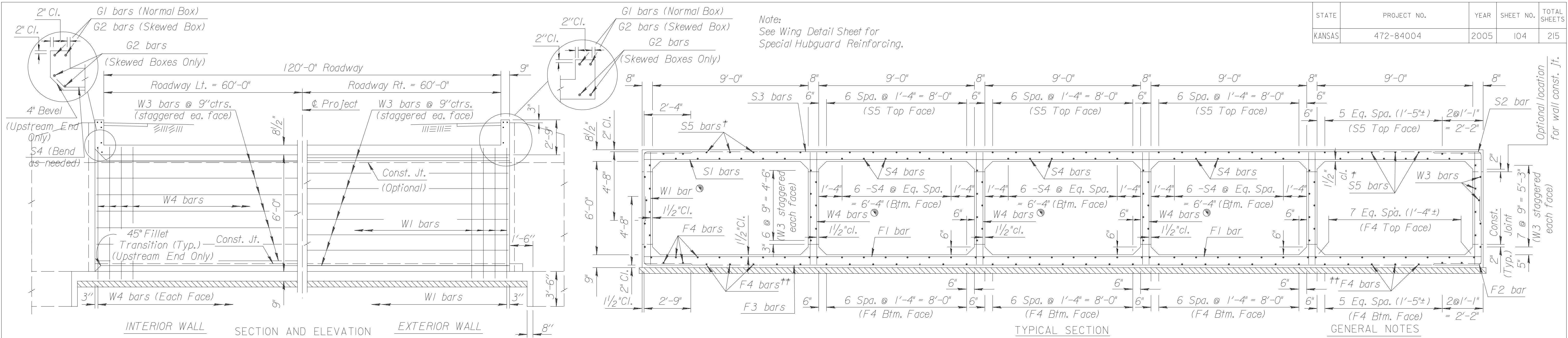


STATE	PROJECT NO.	YEAR	SHEET NO.	TOTAL SHEETS
KANSAS	472-84004	2005	104	215

Note:  
See Wing Detail Sheet for  
Special Hubguard Reinforcing.



**LOADING:** HS20-44 AASHTO Specifications, 1983 Edition.  
**UNIT STRESSES:** Grade 4.0 Concrete;  $f'c = 4,000$  p.s.i.  
 Reinforcing Steel;  $f_y = 60,000$  p.s.i.  
**FILL HEIGHT:** Unless otherwise noted, the Design Fill Height is measured from the riding surface at the culvert and shall include the surfacing.  
**CONCRETE:** Grade 4.0 Concrete shall be used throughout. Bevel all exposed edges with a 3/4 inch triangular moulding. Where Grade 4.0 Concrete (AE) is specified, it shall be placed in the top slab above the Construction Joint.  
**REINFORCING:** All reinforcing shall conform to ASTM A615, Grade 60. All dimensions relative to reinforcing steel shall be to centerline of bar unless otherwise noted.  
**EXCAVATION:** Excavation for culverts less than bridge length shall not be paid for directly but shall be subsidiary to Grade 4.0 Concrete. Excavation for RCB Bridges shall be paid for as Class III Excavation.  
**SEAL COURSE:** A Seal Course shall be constructed below the R.C.B. as shown in the Plans. The Seal Course shall consist of a 6" of crushed rock conforming to ASTM C-33, Gradation No. 67, and shall meet the requirements for Portland Cement Concrete Pavement Coarse Aggregate, Section 406.2, City of Wichita Standard Specifications, Wichita Standard Specifications. No reinforcing shall be placed until the Seal Course has gained sufficient strength to permit working upon it without injury.  
**FOUNDATION STABILIZATION:** Foundation Stabilization may be required as directed by the Engineer. The depth of Foundation Stabilization shall be determined by the Engineer. Foundation Stabilization shall be paid for at the determined Unit Price set for Foundation Stabilization. See Auxiliary Details.  
**QUANTITIES:** The quantities shown in the Culvert Summary include apron and/or soil saver quantities when their construction is required by the plans. Payment for additional quantities that result from including seal course and/or floating apron, as a change in original plans, shall be made at the Unit Price bid for the various items involved.  
**GRANULAR BACKFILL (WINGWALLS):** Special backfill procedures may be required at the direction of the Engineer. See Auxiliary Details Sheet.  
**STRIKE LINE:** Wingwalls and that portion of the RCB outside the Strike Line shall be constructed level. Footing for wingwalls shall be constructed with the culvert floor. See wingwall detail sheet.

Plotted By: drp  
 File: i:\2004\04219\FINAL\04219-000.C-5-9\RCB\RCBKIV1.dgn  
 Plot Date: 9-27-2005

Flow Line Elev. Lt.	Flow Line Elev. Rt.	Crown Gr. Elev.	Design Fill Ht.	Skew	Left Wings	Right Wings	Scour Apron	Soil Saver	Concrete			Reinf. Steel (Gr. 60)		
									Barrel (Cu.Yds.)	Wings (Cu.Yds.)	Total (Cu.Yds.)	Barrel (Lbs.)	Wings (Lbs.)	Total (Lbs.)
1350.40	1350.30	1358.90	1	0	FLARED	FLARED	NO	NO	446.25	63.53	509.78	88,153.01	5199.74	93,352.75

F1			F2 *			F3			F4			S1			S2 *			S3			S4			S5								
Size	Spa.	No.	Length	Size	Spa.	No.	Length	Size	Spa.	No.	Length	Size	Spa.	No.	Length	Size	Spa.	No.	Length	Size	Spa.	No.	Length	Size	Spa.	No.	Length					
4	6"	486	25'-0"	6	5 1/2"	530	7'-5"	6	5 1/2"	265	48'-8"	4	300	31'-3"	6	8"	183	48'-8"	5	5 1/2"	530	7'-0"	5	5 1/2"	265	48'-8"	4	120	31'-3"	4	140	31'-3"
K1			K2			W1			W2			W3			W4			G1			X1			X2								
Size	Spa.	No.	Length	Size	Spa.	No.	Length	Size	Spa.	No.	Length	Size	Spa.	No.	Length	Size	Spa.	No.	Length	Size	Spa.	No.	Length	Size	Spa.	No.	Length	Size	Spa.	No.	Length	
N/A	N/A	N/A	N/A	N/A	N/A	N/A	N/A	4	1'-0"	244	7'-2"	N/A	N/A	N/A	N/A	4	176	31'-3"	5	1'-0"	976	7'-2"	5	8	25'-2"	5	8	3'-3"	5	8	3'-10"	

#4	1'-4"
#5	1'-8"
#6	2'-0"

Concrete (Grade 4.0)	0 C.Y.
Concrete (Grade 4.0)(AE)	509.8 C.Y.
Reinforcing Steel (Gr. 60)	93,355 Lbs.
Reinforcing Steel (Epoxy Coated)	— Lbs.
Class III Excavation	438 C.Y.
Foundation Stabilization (Set)	1 C.Y.
Seal Course (Granular Base)	113 C.Y.
Granular Backfill (Wingwalls) (Set)	1 C.Y.
Bridge Handrail (Steel)(Pedestrian Rail)	199.0 L.F.
Light Stone Riprap	135 C.Y.

NO.	DATE	REVISIONS	BY	APP'D
KANSAS DEPARTMENT OF TRANSPORTATION				
Sta. 83+54.00				
5 - 9 ft x 6 ft RFB				
BR 3-9.6 F				Sedgwick Co.
DESIGNED	6-5-91	APP'D	KENNETH F. HURST	
DESIGN CK.	DETAIL CK.	QUANTITIES	TRACE CK.	
		QUAN. CK.		