

CAMERA NO.	DETECTION ZONE	MODE	SIZE (LxW)	PHASE CALLED	PHASE EXTENDED	DELAY / STRETCH	INITIAL SETTING (SEC.)
1	D3-1	PRESENCE	60 x 6	3	3	-	-
1	D3-2	PRESENCE	60 x 6	3	3	-	-
1	D8-1	PULSE	6 x 6	8	8	S	1
1	D8-2	PULSE	6 x 6	8	8	S	1
1	D8-3	PRESENCE	60 x 6	8	8	-	-
1	D8-4	PULSE	6 x 6	8	8	S	1
1	D8-5	PULSE	6 x 6	8	8	S	1
1	D8-6	PRESENCE	60 x 6	8	8	-	-
1	D8-7	PULSE	6 x 6	8	8	S	1
1	D8-8	PULSE	6 x 6	8	8	S	1
1	D8-9	PRESENCE	60 x 6	8	8	-	-
2	D1-1	PRESENCE	60 x 6	1	1	-	-
2	D6-1	PULSE	6 x 6	6	6	S	1
2	D6-2	PULSE	6 x 6	6	6	S	1
2	D6-3	PRESENCE	60 x 6	6	6	-	-
2	D6-4	PULSE	6 x 6	6	6	S	1
2	D6-5	PULSE	6 x 6	6	6	S	1
2	D6-6	PRESENCE	60 x 6	6	6	-	-
2	D6-7	PULSE	6 x 6	6	6	S	1
2	D6-8	PULSE	6 x 6	6	6	S	1
2	D6-9	PRESENCE	60 x 6	6	6	-	-

Sta. 99+29, 69' Lt.
Install Traffic Signal Pedestal
See Sh. No. 137, 140

Sta. 98+99, 61' Lt.
Install Traffic Signal Pole (Joint Use) with 60' Mast Arm
See Sh. No. 137, 138

Sta. 100+61, 77' Lt.
Install Traffic Signal Pole (Joint Use) with 56' Mast Arm
See Sh. No. 137, 138

Sta. 99+42, 70'-6" Rt.
Install Traffic Signal Pole with 54' Mast Arm
See Sh. No. 137, 138

Sta. 100+94, 61' Rt.
Install Traffic Signal Pole with 60' Mast Arm
See Sh. No. 137, 138

Sta. 100+69, 69' Rt.
Install Traffic Signal Pedestal
See Sh. No. 137, 140

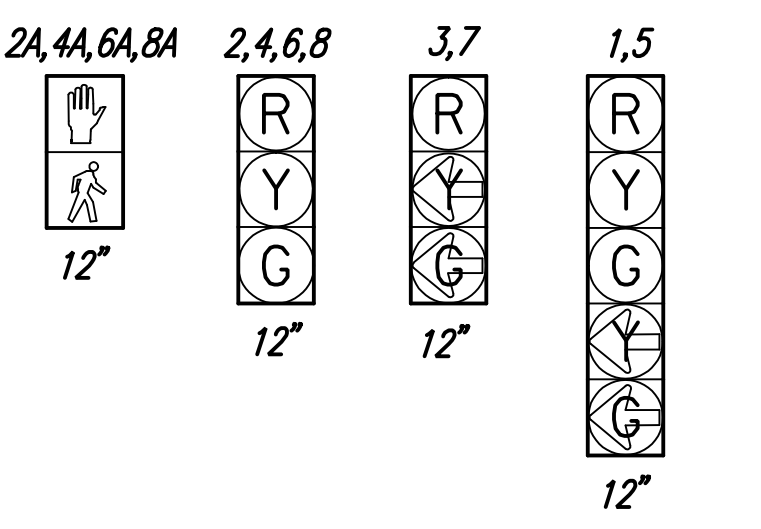
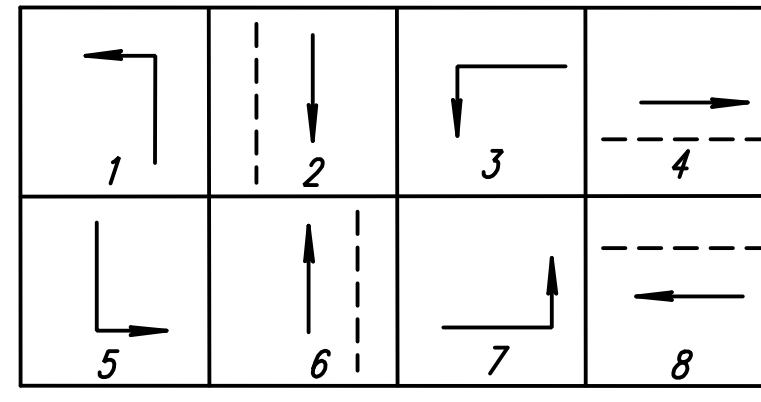
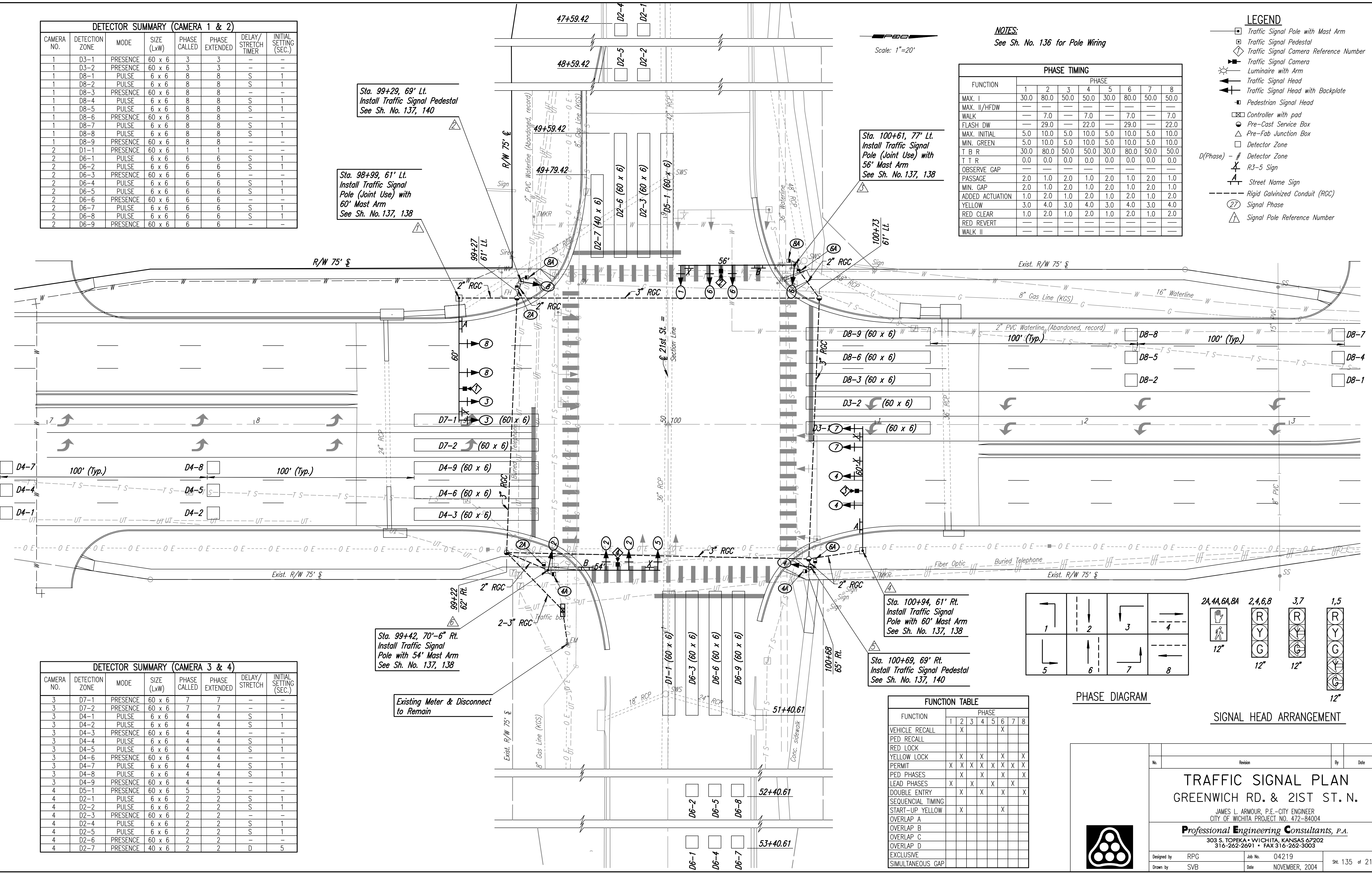
CAMERA NO.	DETECTION ZONE	MODE	SIZE (LxW)	PHASE CALLED	PHASE EXTENDED	DELAY / STRETCH	INITIAL SETTING (SEC.)
3	D7-1	PRESENCE	60 x 6	7	7	-	-
3	D7-2	PRESENCE	60 x 6	7	7	-	-
3	D4-1	PULSE	6 x 6	4	4	S	1
3	D4-2	PULSE	6 x 6	4	4	S	1
3	D4-3	PRESENCE	60 x 6	4	4	-	-
3	D4-4	PULSE	6 x 6	4	4	S	1
3	D4-5	PULSE	6 x 6	4	4	S	1
3	D4-6	PRESENCE	60 x 6	4	4	-	-
3	D4-7	PULSE	6 x 6	4	4	S	1
3	D4-8	PULSE	6 x 6	4	4	S	1
3	D4-9	PRESENCE	60 x 6	4	4	-	-
4	D5-1	PRESENCE	60 x 6	5	5	-	-
4	D2-1	PULSE	6 x 6	2	2	S	1
4	D2-2	PULSE	6 x 6	2	2	S	1
4	D2-3	PRESENCE	60 x 6	2	2	-	-
4	D2-4	PULSE	6 x 6	2	2	S	1
4	D2-5	PULSE	6 x 6	2	2	S	1
4	D2-6	PRESENCE	60 x 6	2	2	-	-
4	D2-7	PRESENCE	40 x 6	2	2	D	5

Existing Meter & Disconnect to Remain

NOTES:
See Sh. No. 136 for Pole Wiring

FUNCTION	PHASE							
	1	2	3	4	5	6	7	8
MAX. I	30.0	80.0	50.0	50.0	30.0	80.0	50.0	50.0
MAX. II/HFDW	-	-	-	-	-	-	-	-
WALK	-	7.0	-	7.0	-	7.0	-	7.0
FLASH DW	-	29.0	-	22.0	-	29.0	-	22.0
MAX. INITIAL	5.0	10.0	5.0	10.0	5.0	10.0	5.0	10.0
MIN. GREEN	5.0	10.0	5.0	10.0	5.0	10.0	5.0	10.0
T. B. R.	30.0	80.0	50.0	50.0	30.0	80.0	50.0	50.0
T. T. R.	0.0	0.0	0.0	0.0	0.0	0.0	0.0	0.0
OBSERVE GAP	-	-	-	-	-	-	-	-
PASSAGE	2.0	1.0	2.0	1.0	2.0	1.0	2.0	1.0
MIN. GAP	2.0	1.0	2.0	1.0	2.0	1.0	2.0	1.0
ADDED ACTUATION	1.0	2.0	1.0	2.0	1.0	2.0	1.0	2.0
YELLOW	3.0	4.0	3.0	4.0	3.0	4.0	3.0	4.0
RED CLEAR	1.0	2.0	1.0	2.0	1.0	2.0	1.0	2.0
RED REVERT	-	-	-	-	-	-	-	-
WALK II	-	-	-	-	-	-	-	-

- LEGEND**
- Traffic Signal Pole with Mast Arm
 - Traffic Signal Pedestal
 - Traffic Signal Camera Reference Number
 - Traffic Signal Camera
 - Luminaire with Arm
 - Traffic Signal Head
 - Traffic Signal Head with Backplate
 - Pedestrian Signal Head
 - Controller with pad
 - Pre-Cast Service Box
 - Pre-Fab Junction Box
 - Detector Zone
 - D(Phase) - # Detector Zone
 - R3-5 Sign
 - Street Name Sign
 - Rigid Galvanized Conduit (RGC)
 - Signal Phase
 - Signal Pole Reference Number



FUNCTION	PHASE							
	1	2	3	4	5	6	7	8
VEHICLE RECALL	X					X		
PED RECALL								
RED LOCK								
YELLOW LOCK	X	X	X	X	X	X	X	X
PERMIT	X	X	X	X	X	X	X	X
PED PHASES	X	X	X	X	X	X	X	X
LEAD PHASES	X	X	X	X	X	X	X	X
DOUBLE ENTRY	X	X	X	X	X	X	X	X
SEQUENTIAL TIMING								
START-UP YELLOW	X				X			
OVERLAP A								
OVERLAP B								
OVERLAP C								
OVERLAP D								
EXCLUSIVE								
SIMULTANEOUS GAP								

PHASE DIAGRAM

SIGNAL HEAD ARRANGEMENT

TRAFFIC SIGNAL PLAN
GREENWICH RD. & 21ST ST. N.

JAMES L. ARMOUR, P.E. - CITY ENGINEER
CITY OF WICHITA PROJECT NO. 472-84004

Professional Engineering Consultants, P.A.
303 S. TOPKA • WICHITA, KANSAS 67202
316-262-2691 • FAX 316-262-3003

Designed by: RPG Job No.: 04219
Drawn by: SVB Date: NOVEMBER, 2004 Sht. 135 of 215

DS/SVR, RGC, OPER, SVB, SCALE, 1"=20', 1/20/04, 04/21/09, TRAFFIC SIGNAL/SIGNAL GREENWICH&21ST.DGN 11-15-2004 10:25:14 LAST REV: 9-28-2005 BY: svb