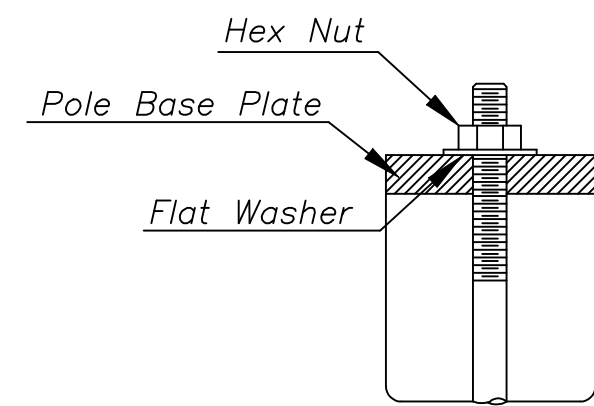
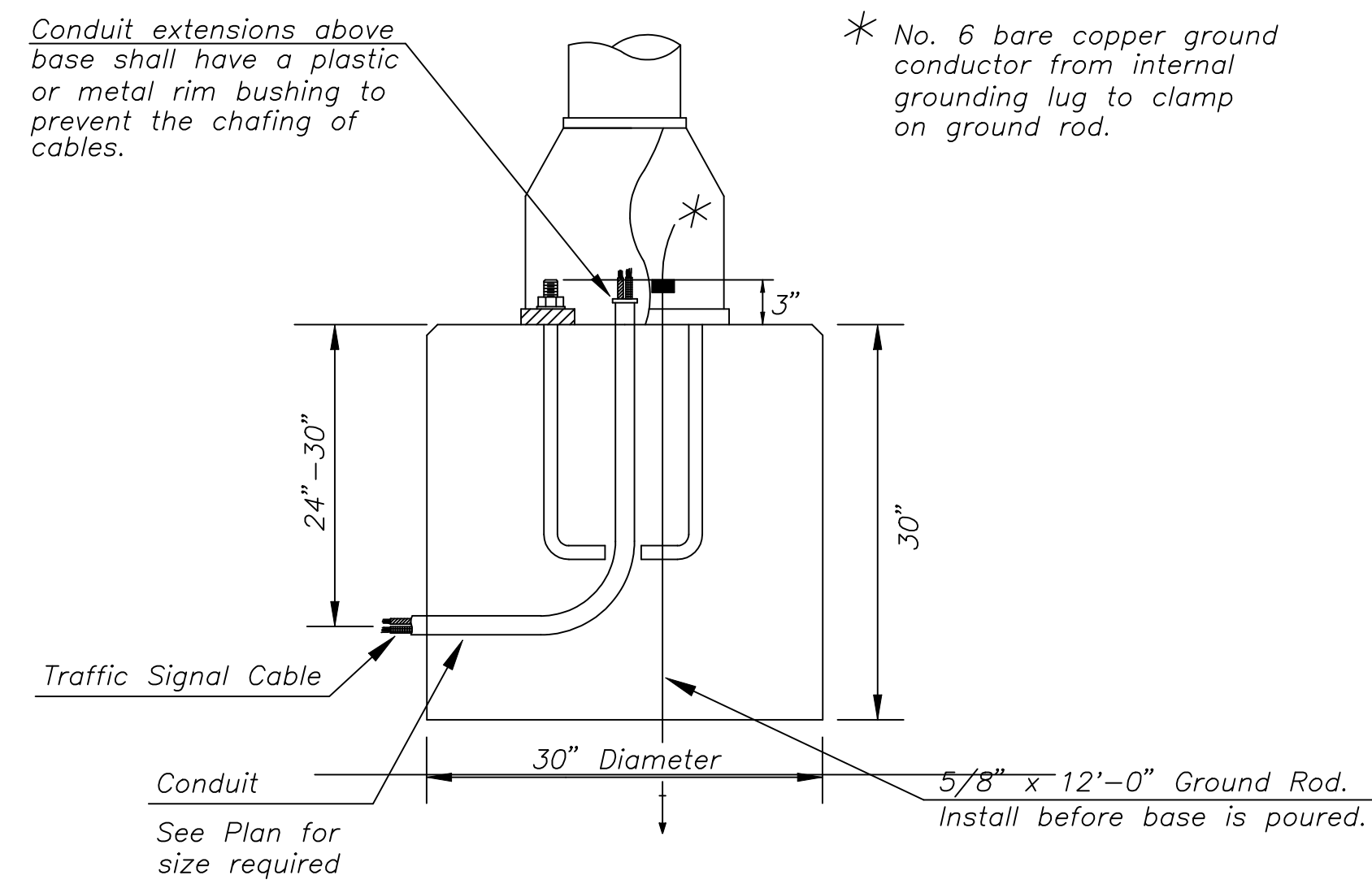
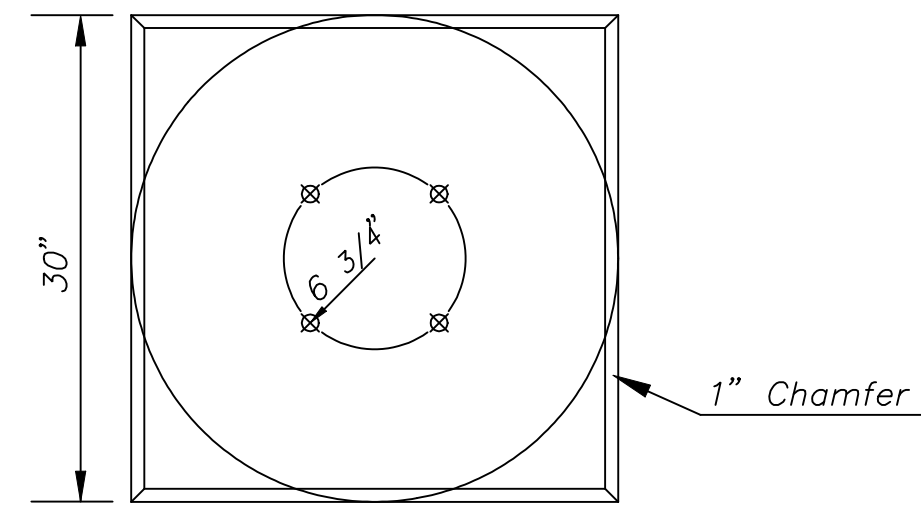


Use Keystone "No-Weld Number 1 Anti-Seize Compound" on all bolts & nuts.

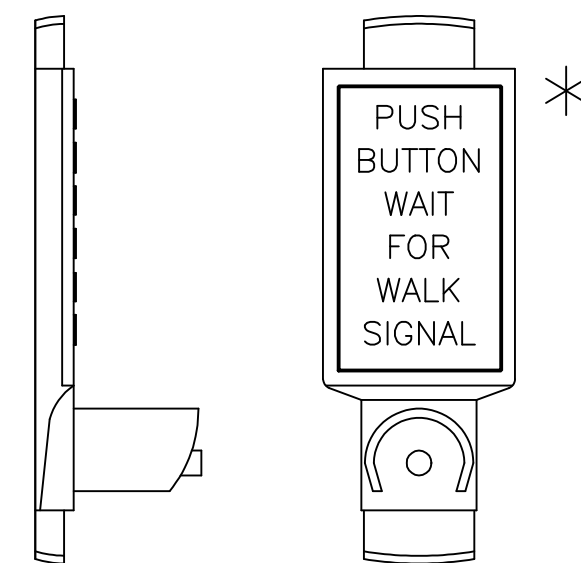


ANCHOR BOLT DETAIL



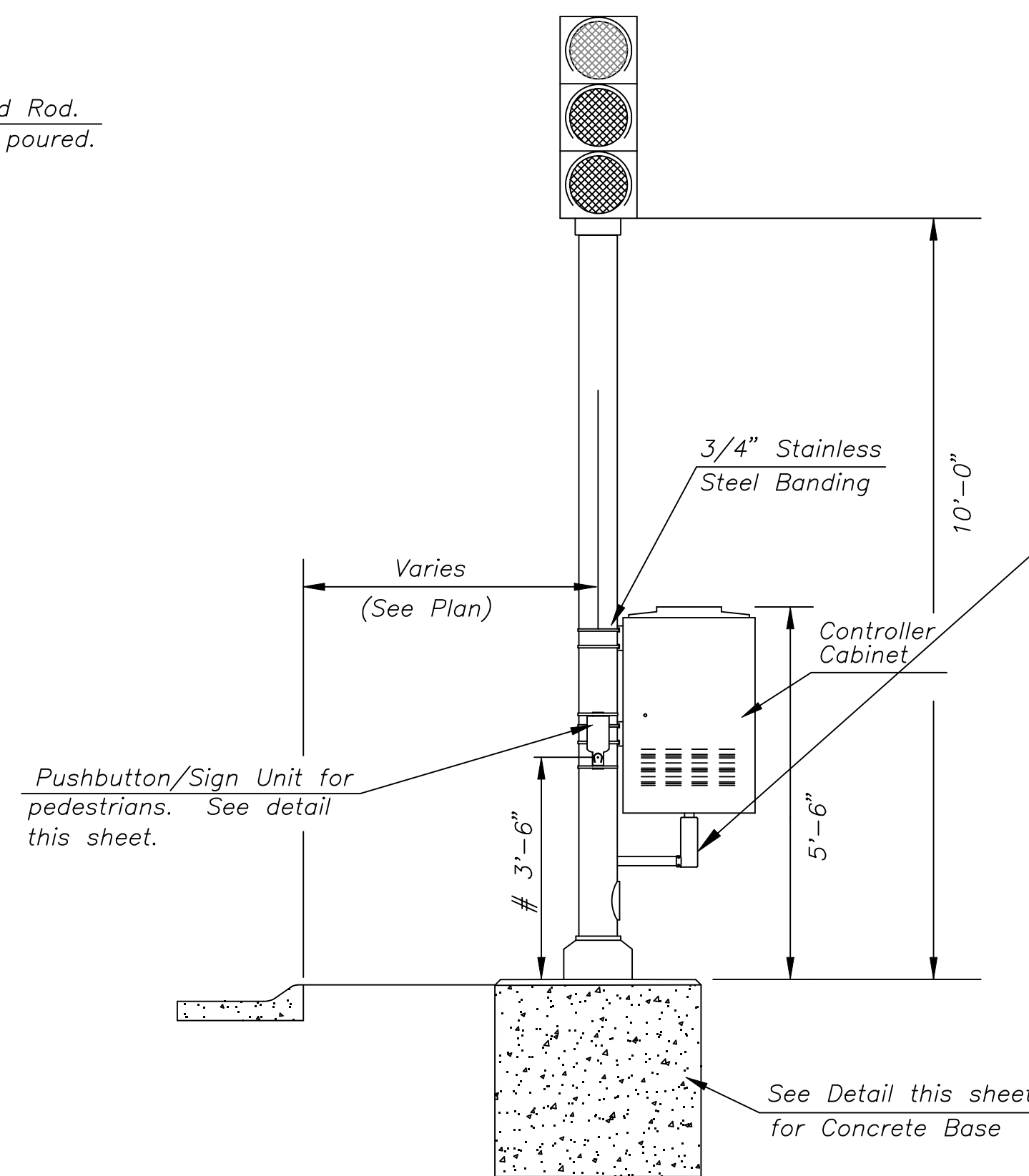
CONCRETE BASE DETAIL

\*NOTE: MESSAGE TO BE CAST WITH HOUSING (ONE PIECE)

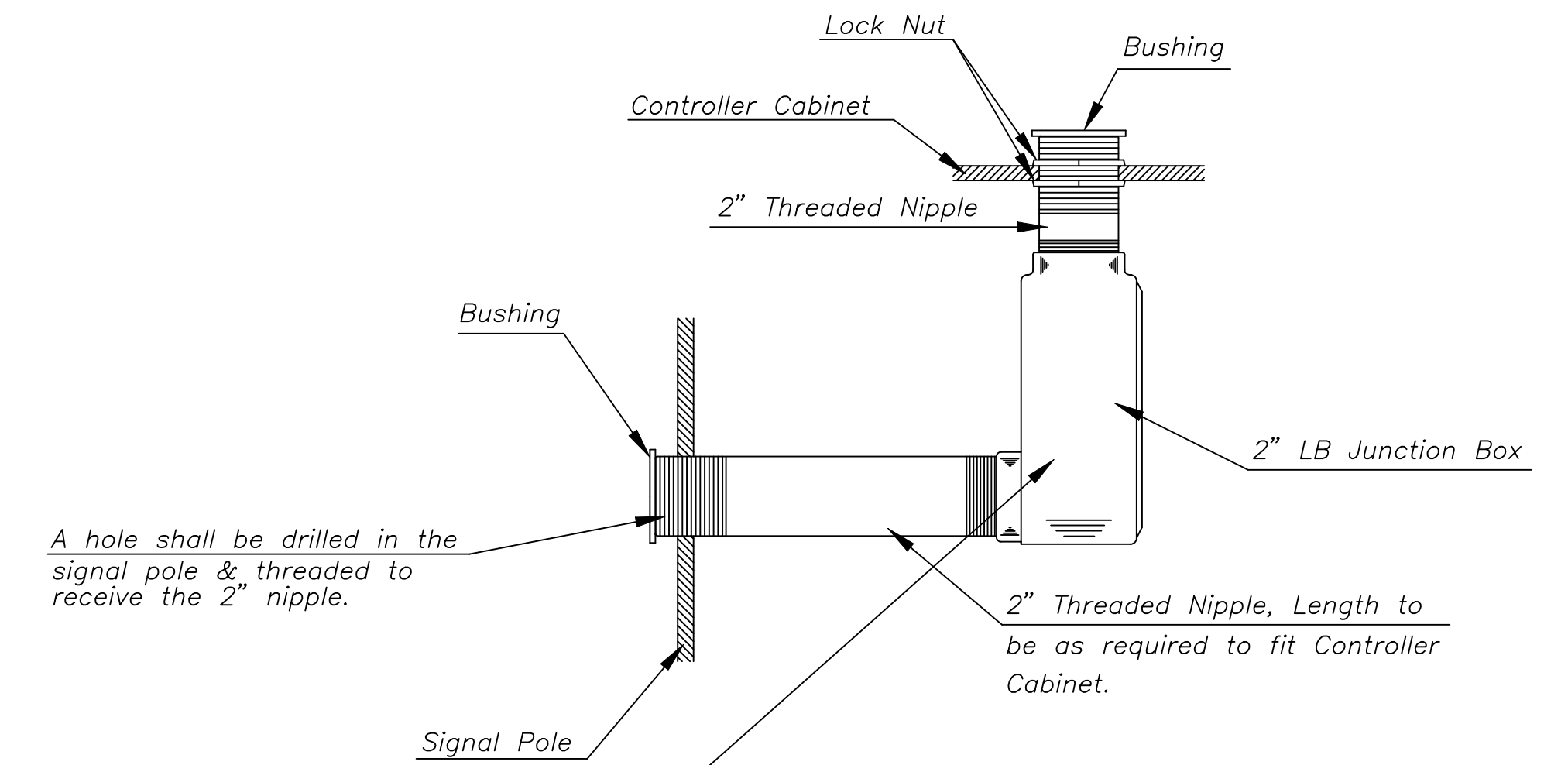


PEDESTRIAN PUSHBUTTON/SIGN UNIT DETAIL

INSTALL PEDESTRIAN PUSHBUTTON UNDERNEATH CORRESPONDING PEDESTRIAN SIGNAL HEAD ON SIDE OF POLE NEAREST CROSSWALK. UNIT SHALL BE FIRMLY ATTACHED TO THE SIDE OF POLE WITH 3/4" STEEL BANDS. SHARP ENDS SHALL BE FOLDED UNDER TO PREVENT INJURY TO PEDESTRIANS.



TRAFFIC SIGNAL PEDESTAL



A hole shall be drilled in the signal pole & threaded to receive the 2" nipple.  
2" Threaded Nipple, Length to be as required to fit Controller Cabinet.

# From Sidewalk Finish Grade to Center of Pushbutton.

i:/2004/04219/Traffic Signal/pedestal.dgn  
Date Plotted: 9-29-2005  
Deliver to: svb



Greenwich and 21st Street		
TRAFFIC SIGNAL PEDESTAL & CONCRETE BASE DETAIL SHEET		
PROJECT NUMBER 472-B4004		
DRAWN BY: T.M.	SCALE	REVISED BY:
DATE: MAY 97	NO SCALE	DATE:
CITY OF WICHITA DEPARTMENT OF PUBLIC WORKS		
DIVISION OF TRAFFIC ENGINEERING		SHEET 140 OF 215
WM. G. MCKINLEY P.E. TRAFFIC ENGINEER		