

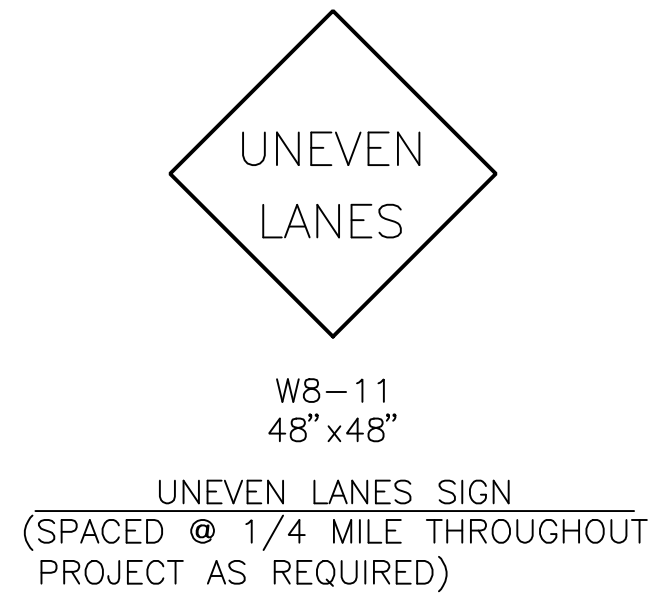
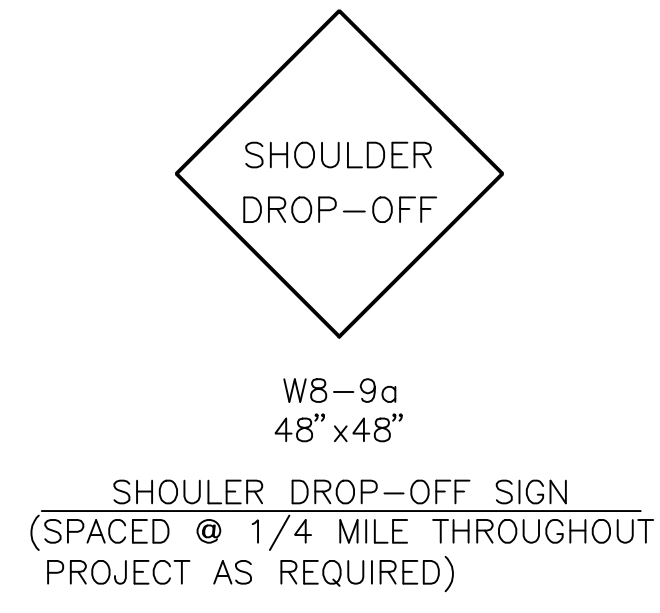
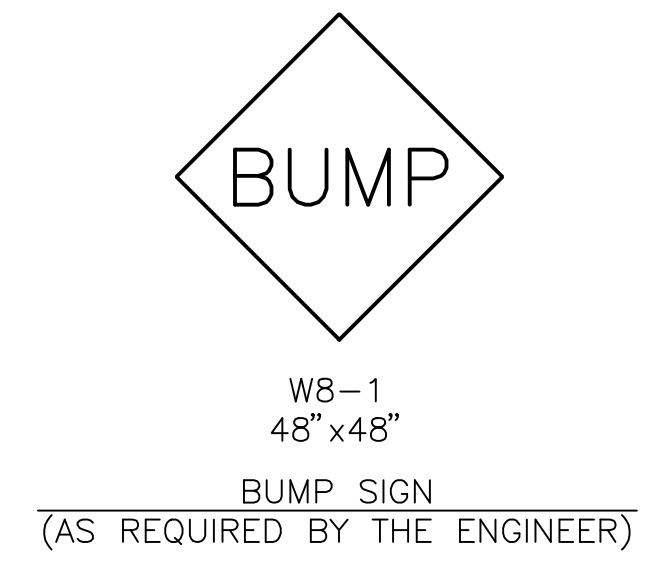
LIST OF TRAFFIC CONTROL DEVICES *

MUTCD DEVICE NO.	NO.	FLASHERS		REMARKS
		TYPE A	TYPE B	
W20-1	2			
R2-5c	2			
W20-4	2			
R4-1	2			
R2-1	2			
W20-7a	2			
G20-2A	2			
W8-9a				
W8-11				
W8-1				

DELINEATORS & CHANNELIZATION DEVICES			
DEVICE	NO.	SIZE	FLASHERS
			TYPE A TYPE B TYPE C
BARRICADES			
TYPE III			
TYPE II			
TYPE I			
DRUMS			
CONES			
TUBES			
VERTICAL PANELS			
SINGLE			
BACK TO BACK			
PAVEMENT MARKING		WHITE	YELLOW
4" BROKEN (Lin. Ft.)			
4" SOLID (Lin. Ft.)			
TEMPORARY STRIPING (Line Mile)			

* FOR INFORMATION ONLY

SEE SHEET NO. 159 FOR TRAFFIC CONTROL NOTES

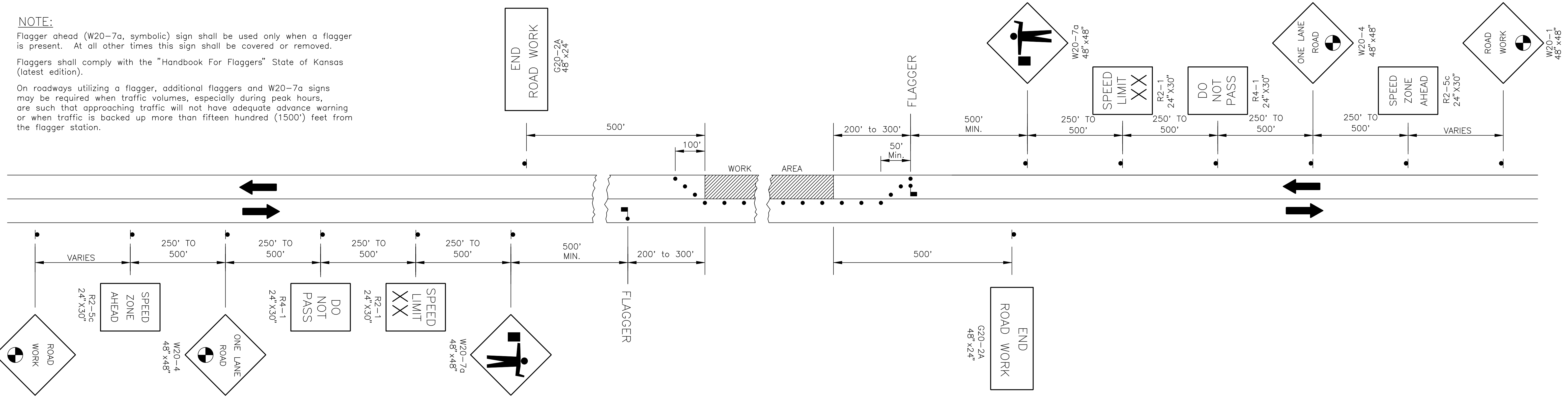


NOTE:

Flagger ahead (W20-7a, symbolic) sign shall be used only when a flagger is present. At all other times this sign shall be covered or removed.

Flaggers shall comply with the "Handbook For Flaggers" State of Kansas (latest edition).

On roadways utilizing a flagger, additional flaggers and W20-7a signs may be required when traffic volumes, especially during peak hours, are such that approaching traffic will not have adequate advance warning or when traffic is backed up more than fifteen hundred (1500') feet from the flagger station.



- XX Speed To Be Determined By The ENGINEER.
- Distance To Be Determined By The ENGINEER.
- Channelization devices.

TRAFFIC CONTROL PLAN FOR HANDLING ONE-LANE TRAFFIC THROUGH WORK AREA (FLAGGER)

TRAFFIC CONTROL PLAN FOR ONE LANE CLOSED ON A TWO-LANE ROADWAY (FLAGGER) T.C. NO. 3.0

PREPARED BY
 SEDGWICK COUNTY PUBLIC WORKS
 HIGHWAY DIVISION
 DAVID C. SPEARS, P.E. DIRECTOR/COUNTY ENGINEER

REVISED	SCALE	DESIGNED	TRACED	CHECKED	SHEET NO.
					160
	DATE				
	PLANFILE TC-3-0		TOTAL SHEETS		

12/95	CHG G20-2 to G20-2A 60"x24"	DRS/
12/94	CHG W8-9a, W20-1, G20-2 & ADD W8-11	DRS/