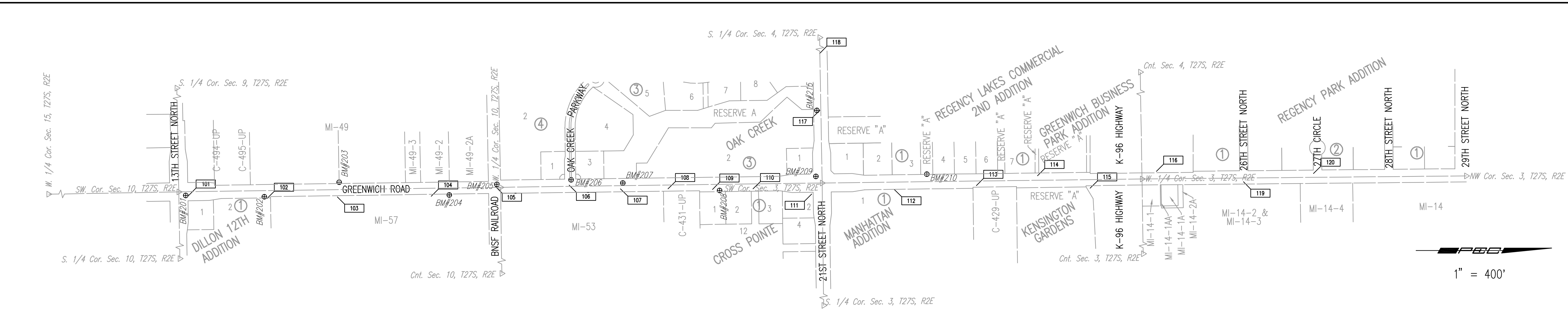


DSNR: OPER: CSI SCALE: 1"=400.00
 J:\SENTOUT\2004\04219\2005-10-19-19 to City (Parts A & B)\Waterline\03-H\Control 10-19-2005 02:08:14 pm



SECTION CORNERS

Pt. #200 N - 1,702,479.9290, E - 1,688,831.3310
 Center, Sec. 3, T27S, R2E
 Found 3/4" Iron Pipe
 87.50' ENE, chiseled "+" on W corner of W concrete base of electric tower
 9.85' N, Nail to fence corner post
 21.75' WNW, Nail in top fence line post
 24.22' S, PK Nail in E face of 10" Hedge tree

Pt. #287 N - 1,694,518.2330, E - 1,688,943.8500
 S 1/4 Corner, Sec. 10, T27S, R2E
 Found #5 Bar in center of traveled way (13th Street North), ± 0.1' below asphalt surface
 59.44' S, 3/4" Iron Pipe
 21.50' W, chiseled "+" in top curb at E end median
 39.02' SE, 3 Nails on E face of power pole
 79.70' NNE, Spike & Washer on E face of power pole

Pt. #288 N - 1,697,172.5359, E - 1,688,901.6304
 Center, Sec. 10, T27S, R2E
 Found #4 bar with Savoy cap at surface
 66.80' NW, Nail & Shiner in S face of S pole electric line
 36.06' S, Nail & Shiner in center of railroad tracks
 14.12' SSE, chiseled "+" in N rim of sanitary sewer manhole
 70.58' SW, Nail & Shiner in E edge of bike path at N side of railroad tracks

Pt. #289 N - 1,699,827.9232, E - 1,688,859.1462
 S 1/4 Corner Sec. 3, T27S, R2E
 Found #5 Bar with Forgy survey cap
 In Median 21st Street North, E of K-96 overpass
 14.15' N, chiseled "+" on top of curb
 23.90' W, chiseled "+" on top of curb
 14.28' S, chiseled "+" on top W side of traffic mount

Pt. #292 N - 1,702,394.9298, E - 1,683,530.6095
 Center, Sec. 4, T27S, R2E
 #5 Bar, No cap
 2.75' NW, Face of 2" Steel Right-of-Way corner post
 0.55' W, Mag Nail S face of Hedge, post
 38.39' W, Mag Nail N face of 4"x4" corner post
 41.27' SSW, Mag Nail E face of 4"x4" corner post
 46.81' SSE, Mag Nail W face of 4"x4" gate post
 4.00' S, N edge of asphalt bike path

Pt. #293 N - 1,699,749.1173, E - 1,683,570.4813
 S 1/4 Corner, Sec. 4, T27S, R2E
 Found #5 Bar with MKE survey cap in C of 21st Street North with aerial photo target
 0.20' WSW, PK Nail in asphalt near corner
 49.82' N, #5 Bar with Armstrong survey cap
 45.86' NW, Chiseled "+" on SE corner of curb inlet
 49.72' SW, Chiseled "+" in center N side of top curb inlet
 70.84' SE, Mag Nail in E face power pole

Pt. #294 N - 1,697,087.3816, E - 1,683,649.8142
 Center, Sec. 9, T27S, R2E
 Found 1/2" Iron Pipe ± 0.5' below surface
 09.14' NNE, 3 Nails in E face of fence corner post
 14.83' NE, 3 Nails in E face of fence line post
 47.15' WSW, Spike in SW face of 10" Elm
 39.25' S, Inside edge of N rail of railroad tracks

Pt. #295 N - 1,694,425.6007, E - 1,683,646.6558
 S 1/4 Corner, Sec. 9, T27S, R2E
 Found #5 Bar Garber Cap at surface in center of traveled way (13th Street North)
 49.90' N, #5 Bar with MKEC cap
 50.78' NNE, Spike in top of fence brace post
 52.72' SSE, Spike in top of fence brace post
 110.22' WSW, chiseled "+" on center face of curb inlet
 30' ± W, Old railroad

Pt. #296 N - 1,691,819.3587, E - 1,686,339.5104
 W 1/4 Corner, Sec. 15, T27S, R2E
 Found 3/4" Iron Pipe in center of traveled way (Greenwich Road), ± 0.3' below asphalt surface.
 47.66' E, City of Wichita Benchmark Disc
 63.72' ENE, 60d Spike in N face of power pole
 47.30' W, Spike in S face of power pole
 115.96' SSE, Top center of fire hydrant

Pt. #297 N - 1,694,476.4532, E - 1,686,290.3343
 SW Corner, Sec. 10, T27S, R2E
 Found #5 Bar with cap at surface in center intersection of 13th Street North and Greenwich Road
 82.76' NW, chiseled "+" in concrete base of traffic signal pole
 63.08' NE, chiseled "+" in concrete base of traffic signal pole
 122.92' SSE, chiseled "+" in center face of curb inlet
 118.74' SSW, chiseled "+" in center face of curb inlet

Pt. #298 N - 1,697,136.8907, E - 1,686,253.0535
 W 1/4 Corner, Sec. 10, T27S, R2E
 Found railroad spike at surface of asphalt road in center of traveled way (Greenwich Road)
 43.56' S, Inside edge of N rail of railroad tracks
 37.92' SW, Mag Nail & Shiner in top guard post
 35.78' NW, Mag Nail & Shiner in top guard post
 51.82' E, Mag Nail & Shiner in top fence corner post

Pt. #299 N - 1,699,794.6290, E - 1,686,217.4070
 SW Corner, Sec. 3, T27S, R2E
 Found 3" chiseled "+" in center of concrete intersection (21st Street North & Greenwich Road)
 89.44' NE, chiseled "+" on concrete base of traffic lights
 113.43' NW, chiseled "+" on concrete base of traffic lights
 73.60' SW, chiseled "+" on concrete base of traffic lights
 75.93' SE, chiseled "+" on concrete base of traffic lights

Pt. #300 N - 1,702,439.2575, E - 1,686,184.0892
 W 1/4 Corner, Sec. 3, T27S, R2E
 Found 3/4" Iron Pipe
 80.42' SW, 60d Nail top N end of guard rail post
 89.65' SSE, Mag Nail top N end of guard rail post
 19.97' WNW, "+" cut in E rim of sanitary sewer manhole
 25' ± N, Line of highline poles

Pt. #301 N - 1,705,120.0713, E - 1,686,158.7785
 NW Corner, Sec. 3, T27S, R2E
 Found #5 Bar with MKEC survey cap
 59.06' NW, Chiseled "+" on top E end of curb on N side of 29th Street
 52.03' W, Chiseled "+" on top E end of curb on median island
 67.66' ENE, Center of water valve
 109.89' NE, 3 Nails in W face of power pole
 70.53' SE, Mag Nail & Washer in corner post

BENCH MARKS

BM #201
 Chiseled "+" in W curb island at NE corner of Greenwich Road and 13th Street North.
 Elev. = 1386.15

BM #202
 Chiseled "+" in S end of RCP on E side of Greenwich Road in field entrance to telephone switchpad, 800' ± N of 13th Street North.
 Elev. = 1379.17

BM #203
 "T" Post 3' W of W end of 3" steel brace post, online with fence to W along N side of old rodeo arena, 60' ± W of C of Greenwich and 1300' N of 13th Street North.
 Elev. = 1376.04

BM #204
 Railroad spike in W face of power pole, E right of way on Greenwich Road, 400' ± S of railroad tracks and E of driveway to concrete materials company.
 Elev. = 1365.825

BM #205 (Datum)
 COW brass disc in NW corner of railroad signal base, W side of Greenwich Road, 1/2 mile S of 21st Street North.
 Elev. = 1370.59

BM #206
 "T" Post 5' W of N gate post to field entrance, W side of Greenwich Road, 700' ± N of railroad tracks and 500' ± S of RCB culvert.
 Elev. = 1365.87

BM #207
 Chiseled "+" on top of concrete headwall on NW corner of RCB under Greenwich Road, 1100' ± S of 21st Street North.
 Elev. = 1360.065

BM #208
 Railroad spike in W face of 20" Elm on E right of way line of Greenwich Road 800' ± S of 21st Street North.
 Elev. = 1367.70

BM #209
 Chiseled "+" on NW corner of traffic signal base, at SW corner of Greenwich Road & 21st Street North
 Elev. = 1363.54

BM #210
 Chiseled "+" on E end of nose to concrete curb median at Target Store entrance, W side of Greenwich Road 800' ± N of 21st Street North.
 Elev. = 1368.465

BM #211
 W end bolt in power pole ± 1' above ground at private drive to 2400 N. Greenwich Road on E side of road and S side of driveway.
 Elev. = 1371.215

BM #212
 Chiseled "+" on wing wall at SW corner of RCB under bike path S of K-96 ramp E bound to Greenwich and 300' ± W of Greenwich Road.
 Elev. = 1367.285

BM #213
 Chiseled "+" on N end of RCP under bike path, E side of Greenwich Road and S side of K-96 overpass.
 Elev. = 1368.965

BM #214
 "T" Post 5' W of sanitary sewer manhole, 300' N of K-96 and 60' W of Greenwich Road.
 Elev. = 1369.78

BM #215
 Chiseled "+" in top center curb inlet 600' W of Greenwich Road on S side of 21st Street North.
 Elev. = 1363.265

BM #216
 Chiseled "+" on S end of curb & gutter at C of Median, Target entrance on N side of 21st Street North 1400' ± W of Greenwich Road.
 Elev. = 1364.55

BM #217
 COW brass disc on top of S curb of 26th Street North, W of Greenwich Road at fire hydrant.
 Elev. = 1378.94

BM #218
 Railroad spike in W face of 5th highline pole, S of 29th Street North on E right of way of Greenwich Road.
 Elev. = 1379.96

BM #219
 Railroad spike in N face of N pole of 2nd high voltage "H" Structure E of Greenwich Road and N of the old BNSF abandoned railroad.
 Elev. = 1360.755

BM #220
 Railroad spike in N face of N pole of 3rd high voltage "H" Structure E of Greenwich Road and N of the old BNSF abandoned railroad.
 Elev. = 1364.745

BM #221
 Railroad spike in N face of N pole of 1st high voltage "H" Structure W of K-96 overpass on the N side of the old BNSF abandoned railroad.
 Elev. = 1362.445

CONTROL POINTS

Pt. #101 N - 1694545.1133, E - 1686322.4167
 PK Nail in concrete median center W side, NE corner of 13th Street North and Greenwich Road
 No ties taken

Pt. #102 N - 1695196.0559, E - 1686336.5297
 1/2" Rebar in center of gravel drive on the E side of Greenwich Road, First Drive N of 13th Street North and Greenwich Road, SBC Substation
 No ties taken

Pt. #103 N - 1695773.4704, E - 1686328.3542
 1/2" Rebar 50' E of C of Greenwich Road, In line with C of gravel drive to the W, 2nd gravel drive on the W side of Greenwich Road, N of 13th Street North and Greenwich Road
 No ties taken

Pt. #104 N - 1696547.1054, E - 1686316.3019
 1/2" Rebar found 50' E of C of Greenwich Road, In line with N edge of gravel drive of property #1759, First drive S of concrete materials company
 No ties taken

Pt. #105 N - 1697090.5056, E - 1686221.3762
 3/4" Pipe in center of railroad track, 1/2 mile N of 13th Street North and Greenwich Road, On the W side of Greenwich Road, 30' W of C of Greenwich Road
 No ties taken

Pt. #106 N - 1697716.3444, E - 1686213.7579
 1/2" Rebar in N edge of gravel drive. 28' W of C of Greenwich Road, First gravel drive N of concrete materials company. 3/8 mile S of 21st Street North
 11.50' NW, N end of CMP
 19.00' SW, S end of CMP

Pt. #107 N - 1698136.5455, E - 1686255.0710
 3/4" pipe in E gravel shoulder of Greenwich Road. In line with center of creek, ± 1/4 mile S of 21st Street North and Greenwich Road.
 Near RCB

Pt. #108 N - 1698507.8369, E - 1686255.2410
 PK Nail in the S edge of asphalt drive on the E side of Greenwich Road, ± 1/4 mile S of 21st Street North and Greenwich Road (at house # 2002)
 9.00' W, E edge of Greenwich Road
 In line with E edge of E gravel shoulder of Greenwich Road

Pt. #109 N - 1698878.1337, E - 1686255.0402
 1/2" Rebar in SW corner of gravel drive on E side of Greenwich Road, 2nd gravel drive S of 21st Street North and Greenwich Road
 14.00' W, E edge of Greenwich Road
 11.60' ESE, Top S end of CMP

Pt. #110 N - 1699217.8832, E - 1686255.8360
 1/2" Rebar in center of gravel drive 30' E of C of Greenwich Road, First gravel drive S of 21st Street North and Greenwich Road
 22.80' SE, Wood gate post
 22.00' SW, Wood gate post

Pt. #111 N - 1699720.4774, E - 1686293.3722
 Found 1/2" Rebar with G/A cap at SE corner of 21st Street North and Greenwich Road, 2.5' SE of SBC vault
 No ties taken

Pt. #112 N - 1700383.7411, E - 1686256.3341
 1/2" Rebar in center of gravel drive, First gravel drive N of 21st Street North and Greenwich Road, 45 ft. E of C of Greenwich Road
 11.70' SW, S end of CMP
 13.00' NW, N end of CMP

Pt. #113 N - 1701059.0693, E - 1686222.7874
 PK Nail and Shiner in S edge of asphalt drive, In line with E edge of E gravel shoulder of Greenwich Road, South drive of house # 2400
 9.00' W, E edge of Greenwich Road

Pt. #114 N - 1701578.9617, E - 1686125.6951
 PK Nail and Shiner on E edge of bike path, In Line with fence to the W, S of K-96 highway off ramp, 3/8 mile N of 21st Street North and Greenwich Road
 19.00' SSE, 6" x 6" wood sign post
 23.50' W, E end S of right of way fence

Pt. #115 N - 1702017.5967, E - 1686225.0074
 PK Nail and Shiner in center of bike path, 4' E of guard post, N of K-96 highway off ramp, ± 1/2 mile N of 21st Street North and Greenwich Road
 6.15' SW, Face guard post
 3.79' W, Face guard post
 6.24' NW, Face guard post

Pt. #116 N - 1702544.8046, E - 1686113.9716
 T-post 5' W of sanitary sewer manhole, W side of Greenwich Road, 300' ± N of K-96-Bypass, Overpass at Greenwich Road (BM #214)
 No ties taken

Pt. #117 N - 1699751.3679, E - 1685617.6880
 Chiseled "+" on top curb inlet 600' W of Greenwich Road on S side of 21st Street North
 No ties taken

Pt. #118 N - 1699734.7729, E - 1685160.1302
 60d Nail in E side of concrete drive, House # 10801 E 21st Street North
 6.20' S, Mailbox
 13.60' N, High edge curb

Pt. #119 N - 1703282.2139, E - 1686193.4545
 #4 Bar in C of E gravel shoulder of Greenwich Road, On C of 26th Street extended E
 17.50' W, C of Greenwich Road

Pt. #120 N - 1703855.7365, E - 1686110.0226
 #5 Bar with MKE surveyor cap in Plat corner at SW corner of intersection of Greenwich Road and 27th Street Circle
 7.15' SW, top center of sanitary sewer manhole
 49.00' E, W edge of Greenwich Road
 68.30' SE, Post of junction sign to W K-96

No.	Revision	By	Date
CITY OF WICHITA, KANSAS JAMES L. ARMOUR, P.E. - CITY ENGINEER GREENWICH ROAD WATER SUPPLY LINE HORIZONTAL AND VERTICAL CONTROL CITY OF WICHITA PROJECT NO. 448-90066 Professional Engineering Consultants, P.A. 303 S. TOPKA • WICHITA, KANSAS 67202 316-262-2691 • FAX 316-262-3003			
Designed by	MDK	Job No.	35-04219-001
Drawn by	JGA	Date	May 2003

Sht. B3 of 16

1" = 400'