

**Gossin Livingston**  
 Architecture  
 420 South Emporia  
 Wichita, KS 67202  
 Tel: (316) 265-9367  
 Fax: (316) 265-5646  
 Email: architecture@gl.com

© 2005 Gossin Livingston Associates, Inc.  
 The drawing and all information herein is the exclusive property of Gossin Livingston Associates, Inc. and is not to be copied or used in any way without the express written consent of Gossin Livingston Associates, Inc. All drawings, specifications, ideas, designs and arrangements appearing herein constitute the original and unpublished work of:  
 Gossin Livingston Associates, Inc.



**Johnson & Associates, Inc.**  
 100 E. California Ave. - Third Floor  
 Oklahoma City, OK 73104  
 (405) 235-8075 FAX (405) 235-8078  
 Certificate of Authorization #E-1128 EXP. DATE: 12-31-2006

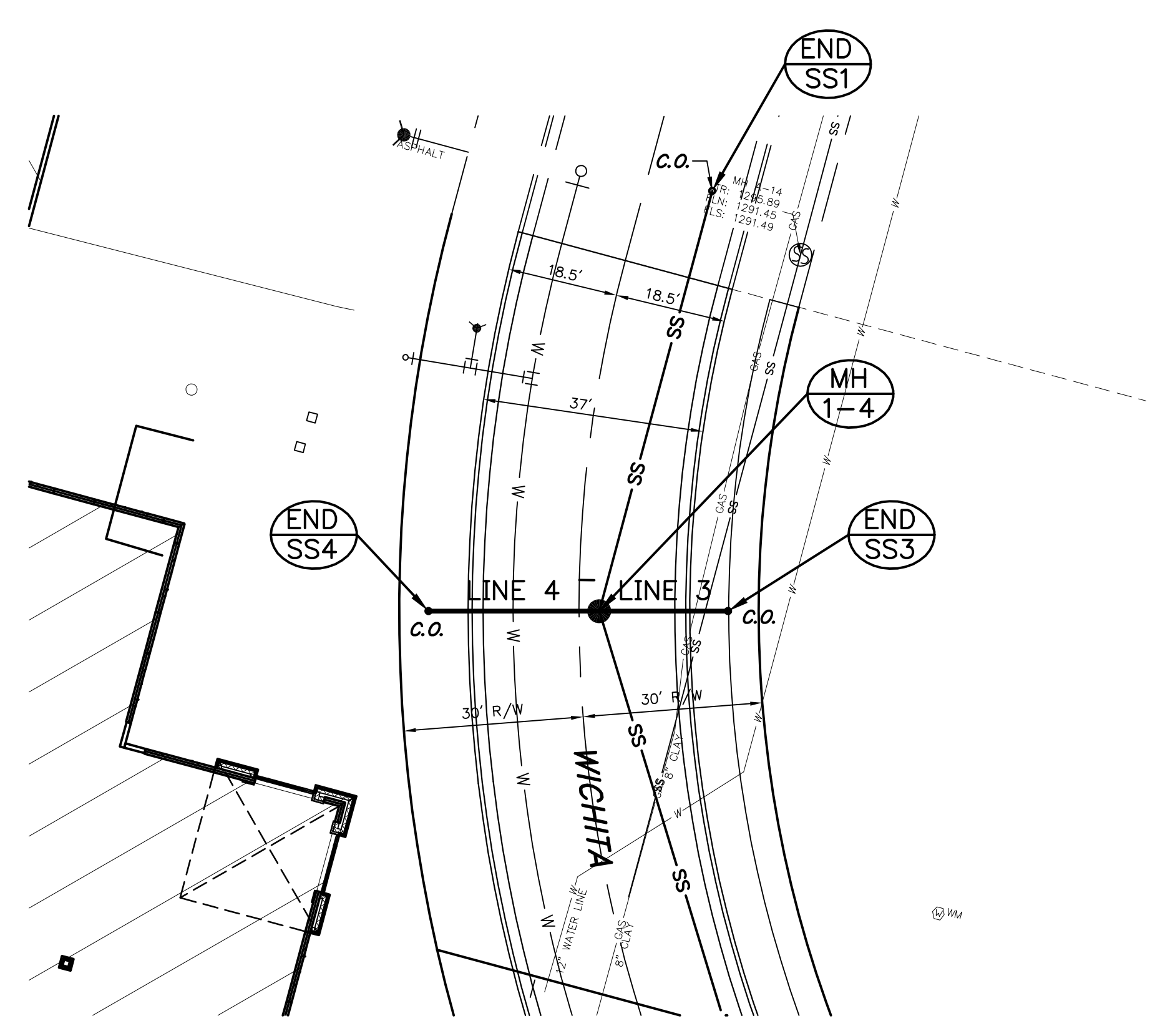
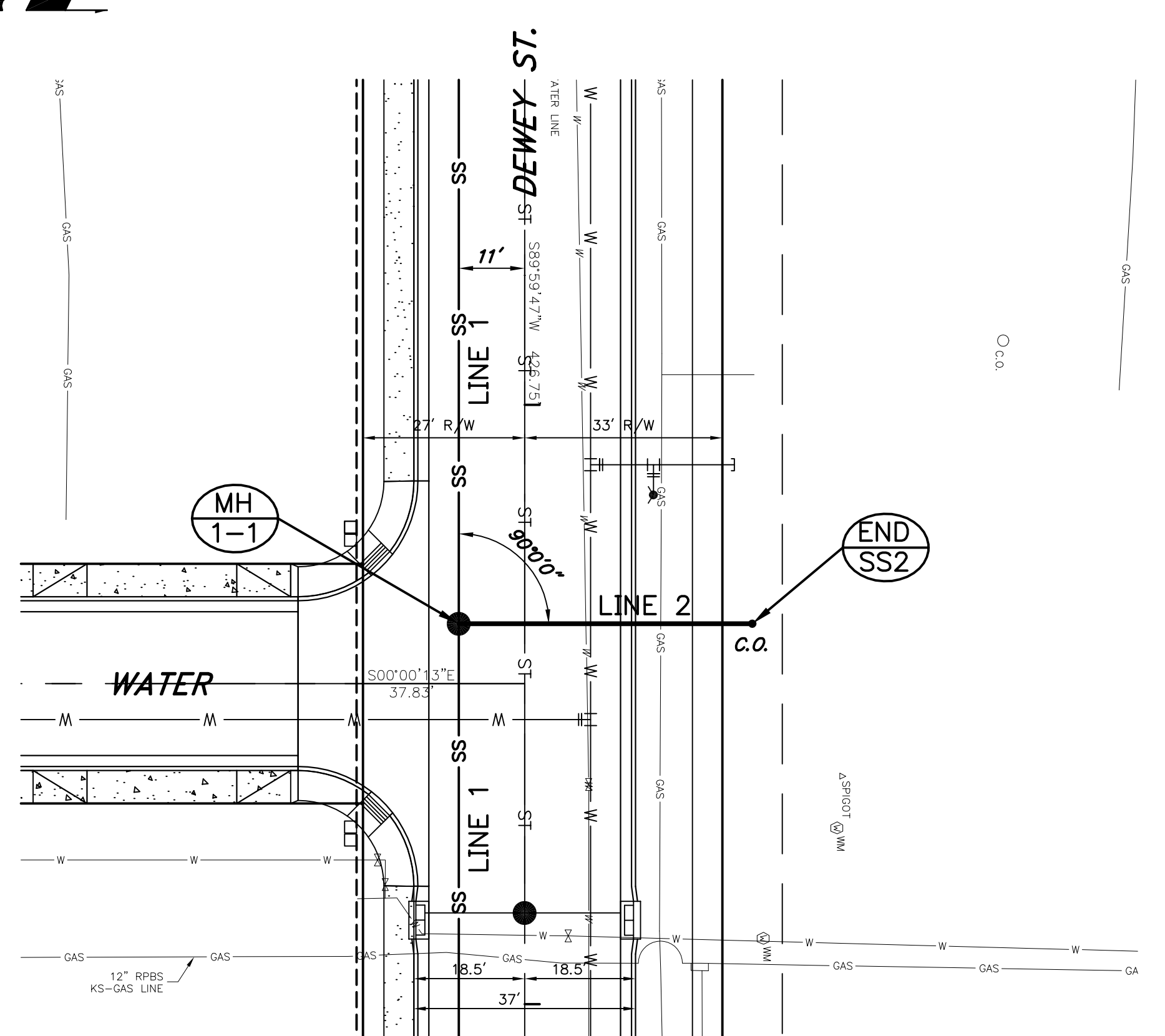


**WICHITA WATERWALK**  
 PUBLIC IMPROVEMENTS  
 PHASE I

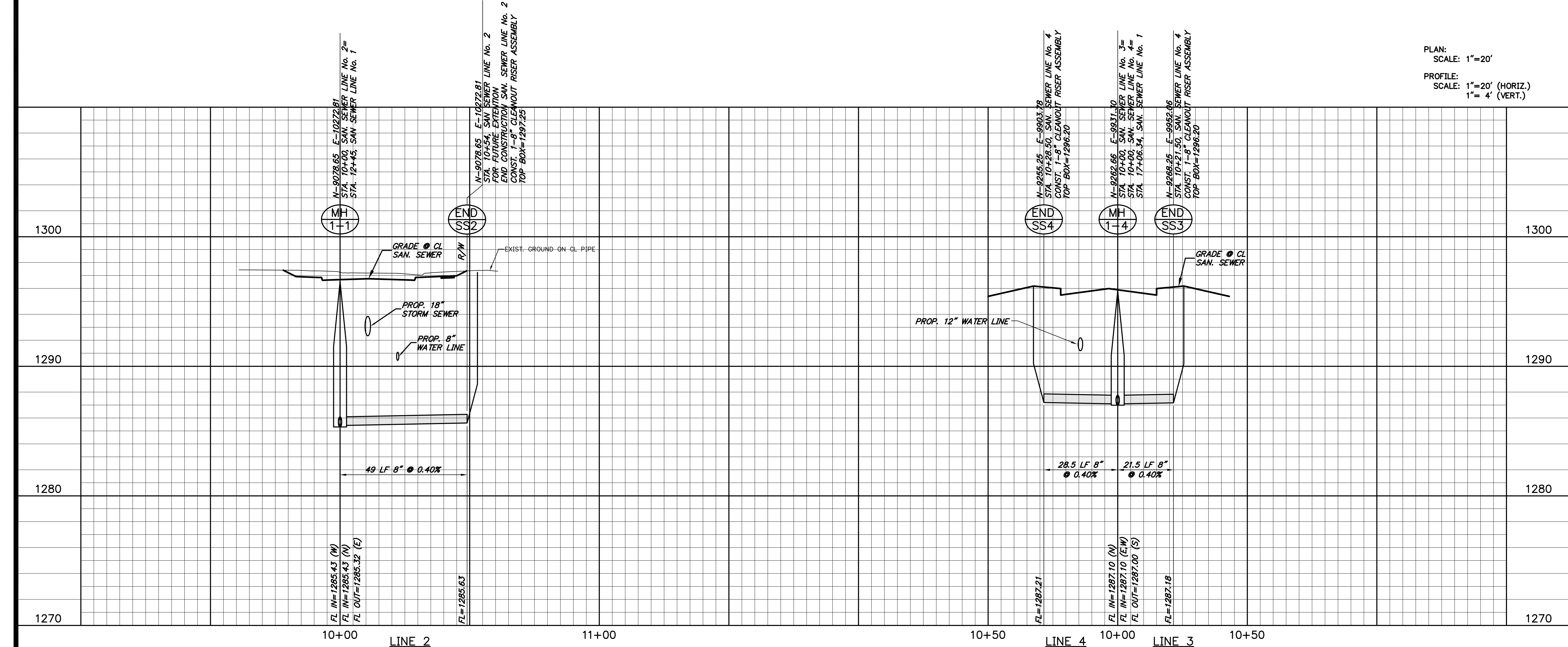
Mark	Date	Description

SANITARY SEWER No. 2, 3, & 4

Job No.	SS1.3
Date	02-15-05
Drawn	BC
Checked	PB
	56 of 68



PLAN:  
 SCALE: 1"=20'  
 PROFILE:  
 SCALE: 1"=20' (HORIZ.)  
 1"= 4' (VERT.)



N-9078.65 E-10272.81  
 STA. 10+00, SAN. SEWER LINE No. 2  
 STA. 12+45, SAN. SEWER LINE No. 1  
 CONST. 1'-8" CLEANOUT RISER ASSEMBLY  
 TOP BOX=1297.25

FL IN=1285.43 (W)  
 FL IN=1285.43 (N)  
 FL OUT=1285.32 (E)

FL=1285.63

N-9285.25 E-9903.78  
 STA. 10+28.50, SAN. SEWER LINE No. 4  
 CONST. 1'-8" CLEANOUT RISER ASSEMBLY  
 TOP BOX=1296.20

FL=1287.21

N-9282.66 E-9911.70  
 STA. 10+00, SAN. SEWER LINE No. 3  
 STA. 10+00, SAN. SEWER LINE No. 4  
 STA. 17+06.84, SAN. SEWER LINE No. 1

FL IN=1287.10 (N)  
 FL IN=1287.10 (E/W)  
 FL OUT=1287.00 (S)

FL=1287.18

N-9288.25 E-9952.06  
 STA. 10+21.50, SAN. SEWER LINE No. 4  
 CONST. 1'-8" CLEANOUT RISER ASSEMBLY  
 TOP BOX=1296.20

FL=1287.18

GRADE @ CL SAN. SEWER  
 EXIST. GROUND ON CL PIPE  
 PROP. 18" STORM SEWER  
 PROP. 8" WATER LINE  
 49 LF 8" @ 0.40%

PROP. 12" WATER LINE  
 28.5 LF 8" @ 0.40%  
 21.5 LF 8" @ 0.40%